

PROJECT REFERENCE NO. B-5639	SHEET NO. EC-06/CONST.2B-1
RW SHEET NO.	
ROADWAY DESIGN ENGINEER	HYDRAULICS ENGINEER

NOTE: IMPERVIOUS DIKES MAY BE MODIFIED AND/OR ELIMINATED AS DIRECTED.

NOTE: UTILIZE SPECIAL STILLING BASIN(S) AS STILLING BASIN WHERE APPLICABLE.

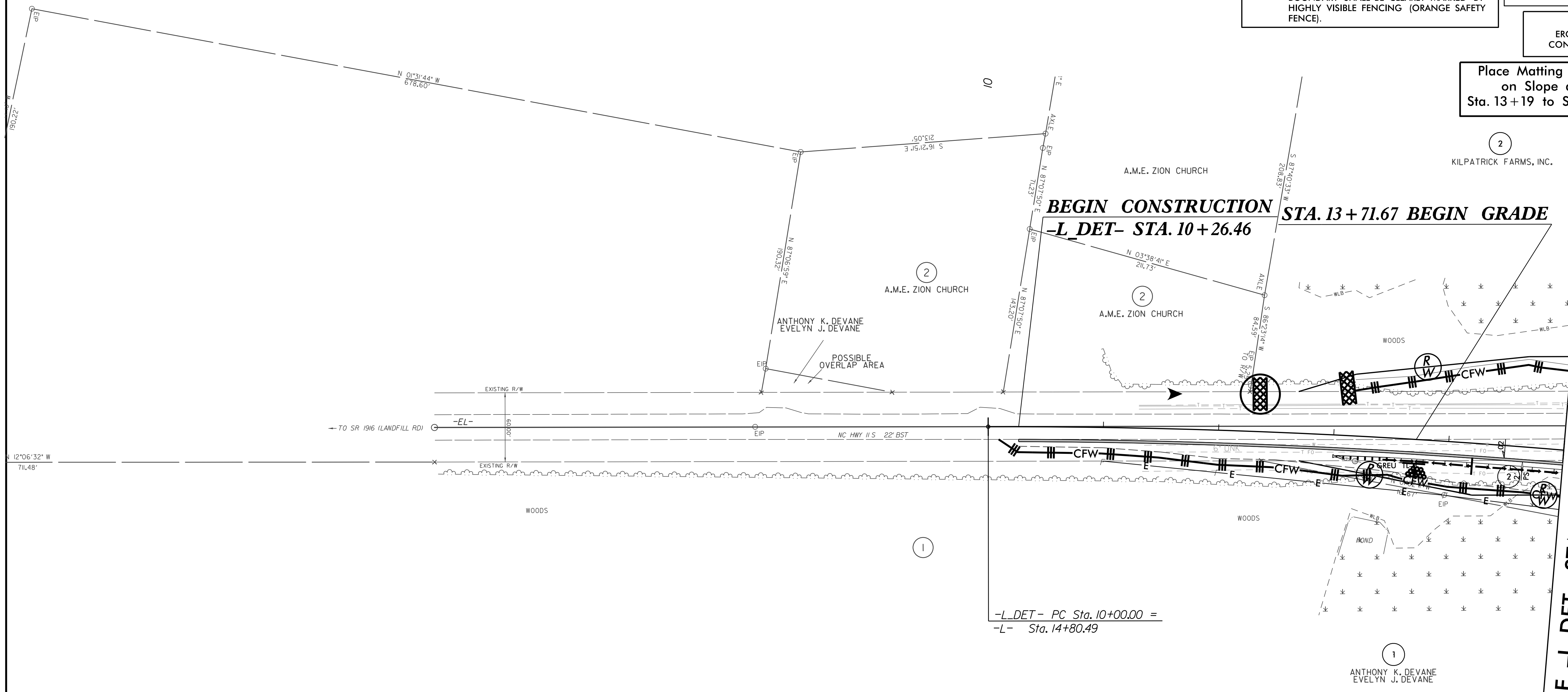
NOTE: UTILIZE COIR FIBER MATTING ADJACENT TO WETLANDS/JURISDICTIONAL AREAS, AND AS DIRECTED.

NOTE: THE OUTSIDE BUFFER, WETLAND OR WATER BOUNDARY SHALL BE CLEARLY MARKED BY HIGHLY VISIBLE FENCING (ORANGE SAFETY FENCE).

DETOUR EROSION CONTROL FOR CONSTRUCTION SHEET 2B-1

Place Matting for Erosion Control on Slope as Work Allows. Sta. 13+19 to Sta. 15+00 -L_DET- RT

NAD 83/2011



BEGIN CONSTRUCTION -L_DET- STA. 10+26.46
STA. 13+71.67 BEGIN GRADE

MATCHLINE -L_DET- STA. 15+00.00 SEE SHEET 2B-2

-L_DET- PC Sta. 10+00.00 =
 -L- Sta. 14+80.49

FOR -L_DET- PROFILE, SEE SHEET 7
 FOR -L- DESIGN, SEE SHEETS 4 & 5