

09/05/2019

TIP PROJECT: B-5534

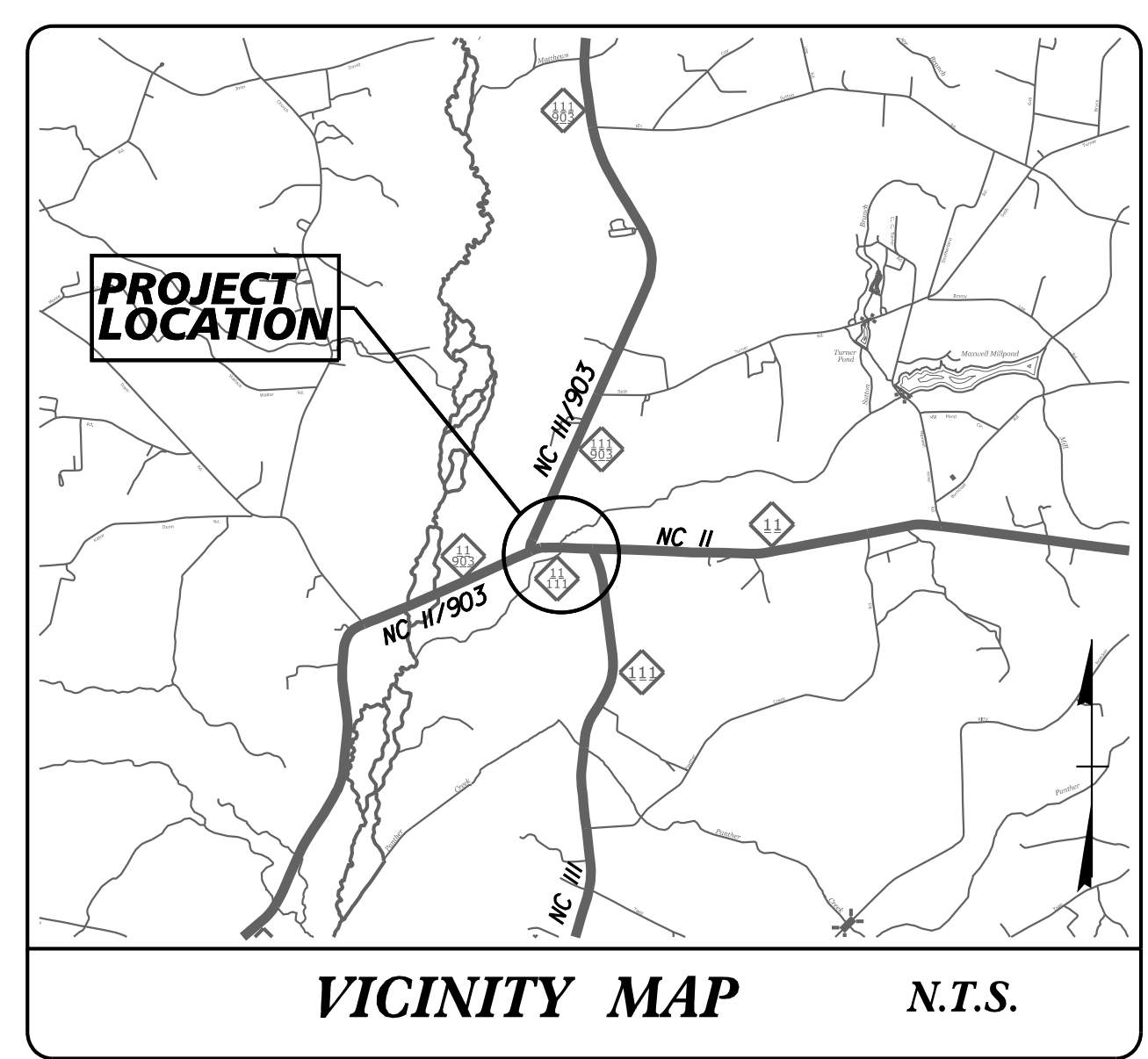
T.I.P. NO.	SHEET NO.
B-5534	UC-1

STATE OF NORTH CAROLINA  
DIVISION OF HIGHWAYS

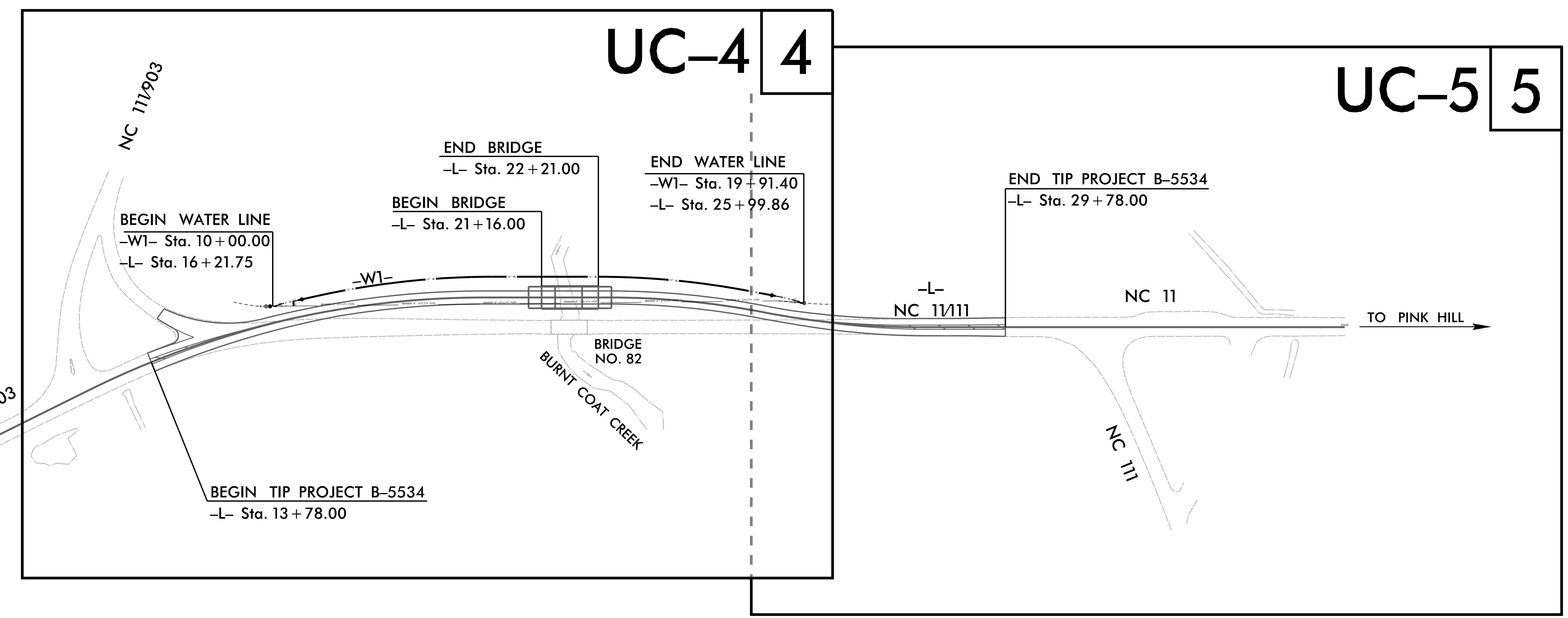
**UTILITY CONSTRUCTION PLANS**  
**DUPLIN COUNTY**

**LOCATION: BRIDGE 82 OVER BURNT COAT CREEK ON NC 111**

**TYPE OF WORK: RELOCATION OF WATER LINE**

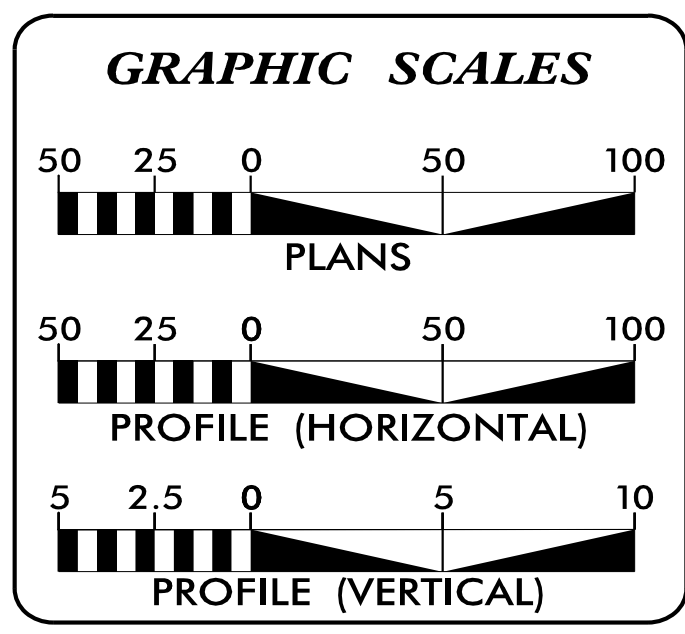


UC PLANS



THIS PROJECT IS NOT WITHIN A MUNICIPAL BOUNDARY

DOCUMENT NOT CONSIDERED FINAL  
UNTIL ALL SIGNATURES ARE COMPLETED



SHEET NO.:	DESCRIPTION:
UC-1	TITLE SHEET
UC-2	UTILITY SYMBOLGY
UC-3	UTILITY NOTES
UC-3A THRU UC-3C	UTILITY DETAILS
UC-4 THRU UC-5	UTILITY CONSTRUCTION SHEETS
UC-6	UTILITY PROFILE SHEET

**WATER AND SEWER OWNERS ON PROJECT**

(1) WATER - DUPLIN COUNTY  
(2) SANITARY SEWER - DUPLIN COUNTY

PREPARED IN THE OFFICE OF

**Kimley»Horn**

NC LICENSE #F-0102  
421 FAYETTEVILLE STREET, SUITE 600  
RALEIGH, NORTH CAROLINA 27601  
PHONE: (919) 877-2000

Nathaniel Harvey, P.E. CONSULTANT CONTACT #1  
Cody Mangano, P.E. CONSULTANT CONTACT #2

SEAL

**DIVISION OF HIGHWAYS UTILITIES UNIT**  
1555 MAIL SERVICES CENTER  
RALEIGH, NC 27699-1555  
PHONE (919) 707-6690  
FAX (919) 250-4151

Nabil Hamdan REGIONAL UTILITIES ENGINEER  
Kelvin Martin, E.I. SENIOR UTILITIES ENGINEER  
Kyle Pleasant UTILITIES AREA COORDINATOR  
Larry James Jr. UTILITIES COORDINATOR

# STATE OF NORTH CAROLINA DIVISION OF HIGHWAYS

## UTILITIES PLAN SHEET SYMBOLS

### PROPOSED WATER SYMBOLS

Water Line (Sized as Shown)	..... 12" WL
11¼ Degree Bend	.....
22½ Degree Bend	.....
45 Degree Bend	.....
90 Degree Bend	.....
Plug	.....
Tee	.....
Cross	.....
Reducer	.....
Gate Valve	.....
Butterfly Valve	.....
Tapping Valve	.....
Line Stop	.....
Line Stop with Bypass	.....
Blow Off	.....
Fire Hydrant	.....
Relocate Fire Hydrant	.....
Remove Fire Hydrant	..... REM FH
Water Meter	.....
Relocate Water Meter	.....
Remove Water Meter	..... REM WM
Water Pump Station	.....
RPZ Backflow Preventer	.....
DCV Backflow Preventer	.....
Relocate RPZ Backflow Preventer	.....
Relocate DCV Backflow Preventer	.....

### PROPOSED SEWER SYMBOLS

Gravity Sewer Line (Sized as Shown)	..... 12" SS
Force Main Sewer Line (Sized as Shown)	..... 12" FSS
Manhole (Sized per Note)	.....
Sewer Pump Station	.....

### PROPOSED MISCELLANEOUS UTILITIES SYMBOLS

Power Pole	.....
Telephone Pole	.....
Joint Use Pole	.....
Telephone Pedestal	.....
Utility Line by Others (Type as Shown)	.....
Trenchless Installation	..... 12" TL INSTALL
Encasement by Open Cut	..... 24" ENCAS BY OC
Encasement	..... 24" ENCASEMENT

Thrust Block	.....
Air Release Valve	.....
Utility Vault	.....
Concrete Pier	.....
Steel Pier	.....
Plan Note	.....
Pay Item Note	.....

NOTE  
PAY ITEM

### EXISTING UTILITIES SYMBOLS

Power Pole	.....
Telephone Pole	.....
Joint Use Pole	.....
Utility Pole	.....
Utility Pole with Base	.....
H-Frame Pole	.....
Power Transmission Line Tower	.....
Water Manhole	.....
Power Manhole	.....
Telephone Manhole	.....
Sanitary Sewer Manhole	.....
Hand Hole for Cable	.....
Power Transformer	.....
Telephone Pedestal	.....
CATV Pedestal	.....
Gas Valve	.....
Gas Meter	.....
Located Miscellaneous Utility Object	.....
Abandoned According to Utility Records	..... AATUR
End of Information	..... E.O.I.

*Underground Power Line	.....
*Underground Telephone Cable	.....
*Underground Telephone Conduit	.....
*Underground Fiber Optics Telephone Cable	.....
*Underground TV Cable	.....
*Underground Fiber Optics TV Cable	.....
*Underground Gas Pipeline	.....
Aboveground Gas Pipeline	.....
*Underground Water Line	.....
Aboveground Water Line	.....
*Underground Gravity Sanitary Sewer Line	.....
Aboveground Gravity Sanitary Sewer Line	.....
*Underground SS Forced Main Line	.....
Underground Unknown Utility Line	.....
SUE Test Hole	.....
Water Meter	.....
Water Valve	.....
Fire Hydrant	.....
Sanitary Sewer Cleanout	.....

\*For Existing Utilities  
 Utility Line Drawn from Record (Type as Shown) .....   
 Designated Utility Line (Type as Shown) .....

5/14/99

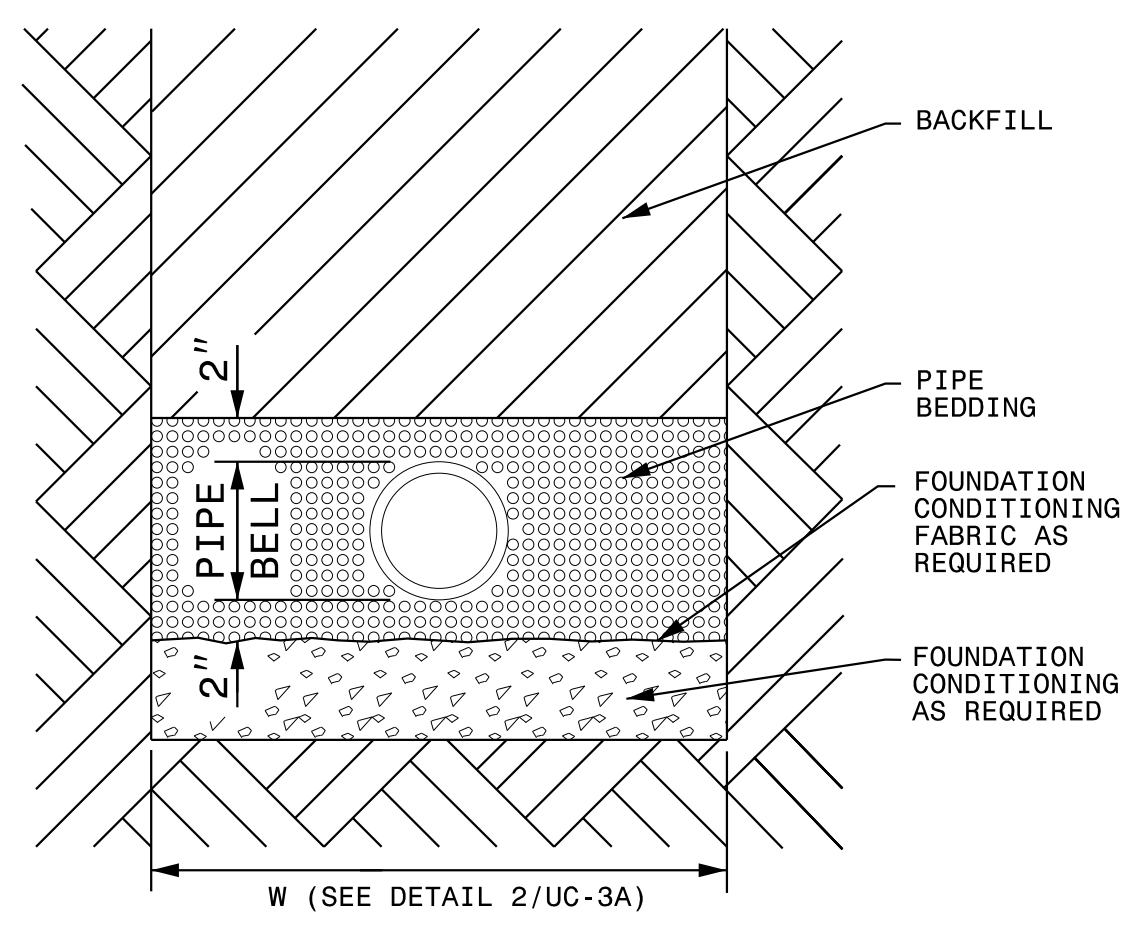






5/14/99

PROJECT REFERENCE NO.	SHEET NO.
B-5534	UC-3A
DESIGNED BY: NLH	
DRAWN BY: CDR	
CHECKED BY: CPM	
APPROVED BY: NLH	
REVISED:	
NORTH CAROLINA DEPARTMENT OF TRANSPORTATION UTILITIES ENGINEERING SEC. PHONE: (919) 707-6690 FAX: (919) 250-4151	
UTILITY CONSTRUCTION PLANS ONLY <b>DOCUMENT NOT CONSIDERED FINAL UNTIL ALL SIGNATURES ARE COMPLETED</b>	



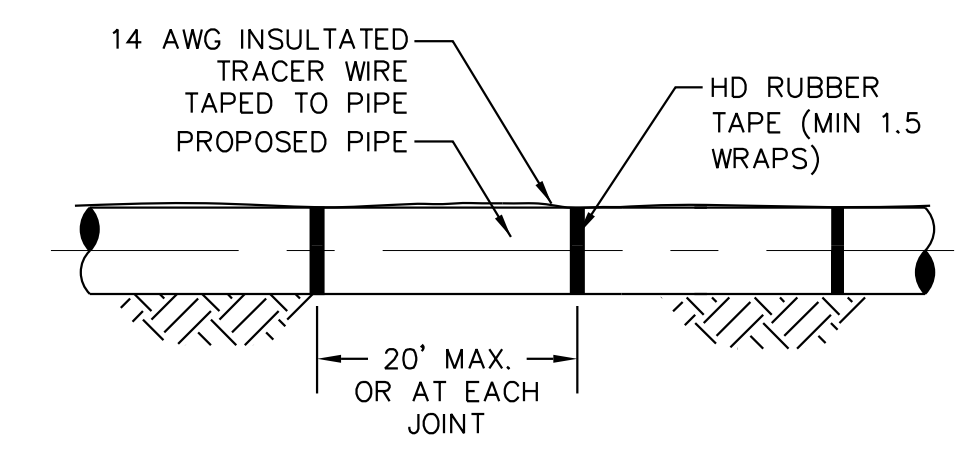
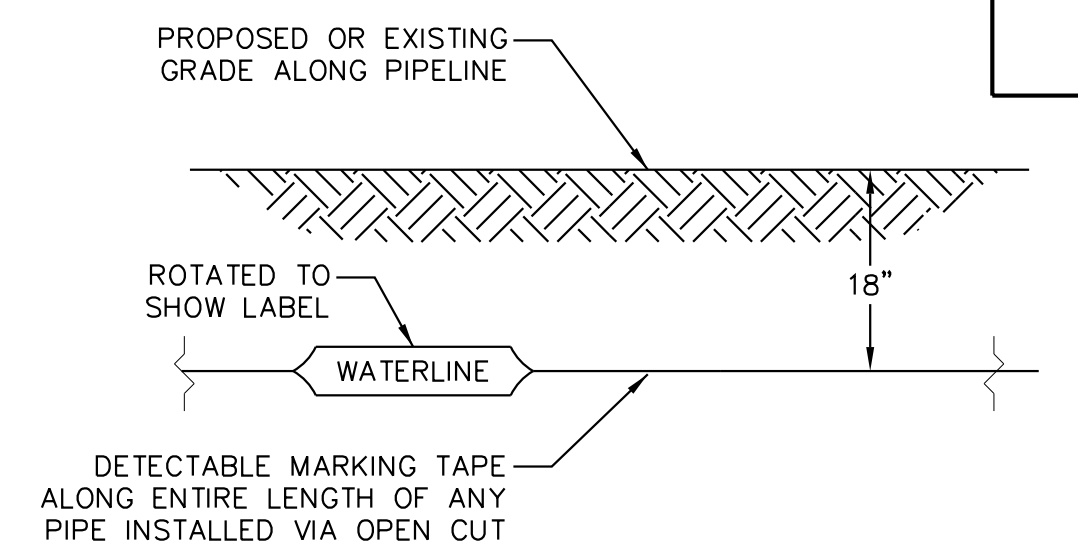
- NOTES:
1. PLACE FOUNDATION CONDITIONING MATERIAL BELOW BEDDING IF REQUIRED, AS DIRECTED BY ENGINEER.
  2. PIPE SHALL BE BEDDED IN SELECT MATERIAL, CLASS II (TYPE 1) OR CLASS III.
  3. TRENCH SHALL BE BACKFILLED IN LOOSE 6" LAYERS COMPACTED TO TOP OF TRENCH USING LOCAL EXCAVATED MATERIAL IF APPROVED BY THE ENGINEER, OR SELECT MATERIAL.
  4. ALL MATERIAL SHALL BE FREE OF ROCKS, FOREIGN MATERIAL, AND FROZEN EARTH.
  5. COMPACTION SHALL BE TO APPROXIMATELY 95% DENSITY IN ACCORDANCE WITH AASHTO T-99 AS MODIFIED BY THE DEPARTMENT OF TRANSPORTATION.

**1 TRENCH DETAIL**  
 UC-3A SCALE: N.T.S.

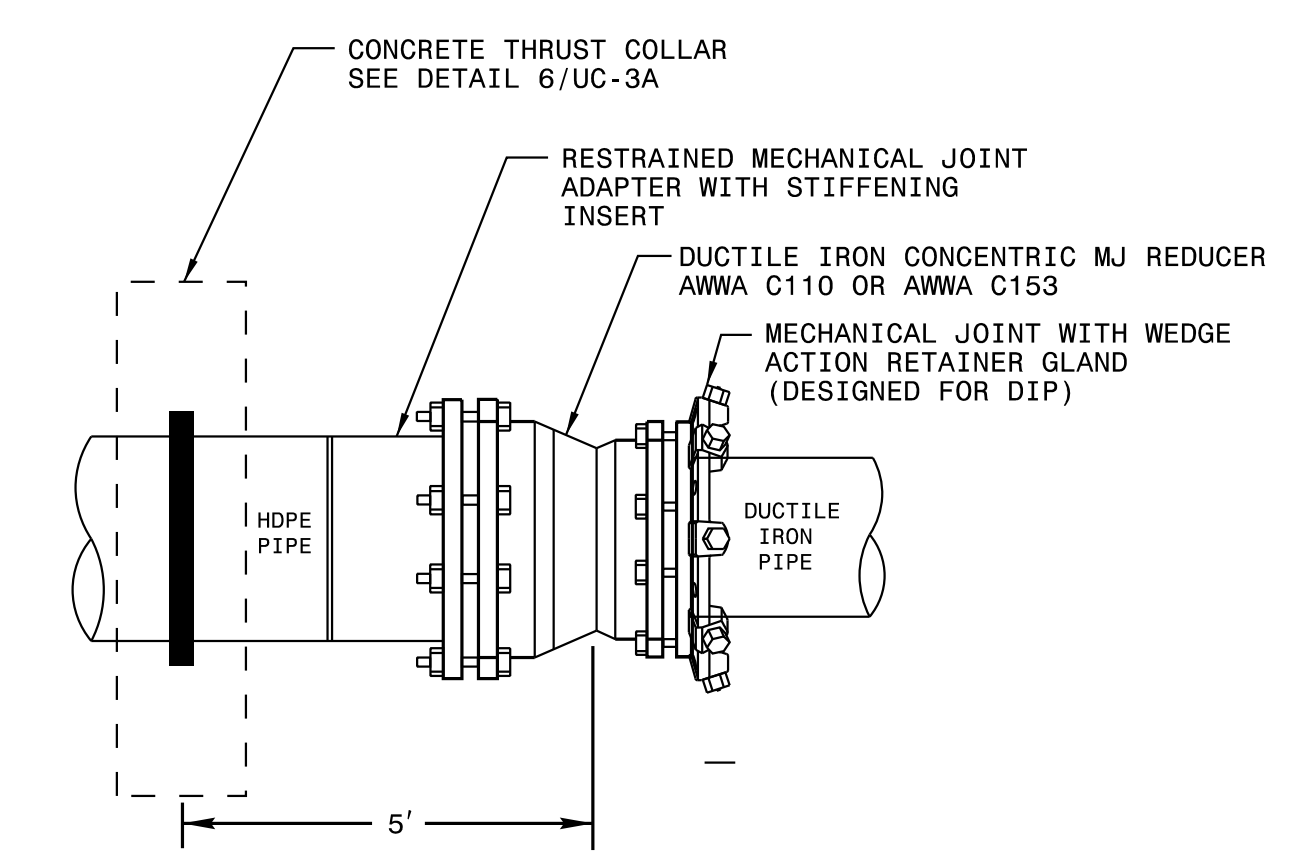
INTERNAL DIAMETER OF PIPE	TRENCH EXCAVATION LIMITS	
	WIDTH OF TRENCH	
	MAX	W=MIN
4"-6"	3'-9"	2'-0"
8"-10"	3'-9"	2'-2"
12"	3'-9"	O.D.+2'
14"-16"	4'-2"	O.D.+2'
18"	4'-4"	O.D.+2'
20", 21"	4'-8"	O.D.+2'
24"	4'-11"	O.D.+2'
27"	5'-9"	O.D.+2'
30"	6'-7"	O.D.+2'
36"	7'-4"	O.D.+2'

W = TRENCH WIDTH AT BOTTOM OF PIPE. TRENCH SIDE SLOPES SHALL BE IN ACCORDANCE WITH OSHA REQUIREMENTS.

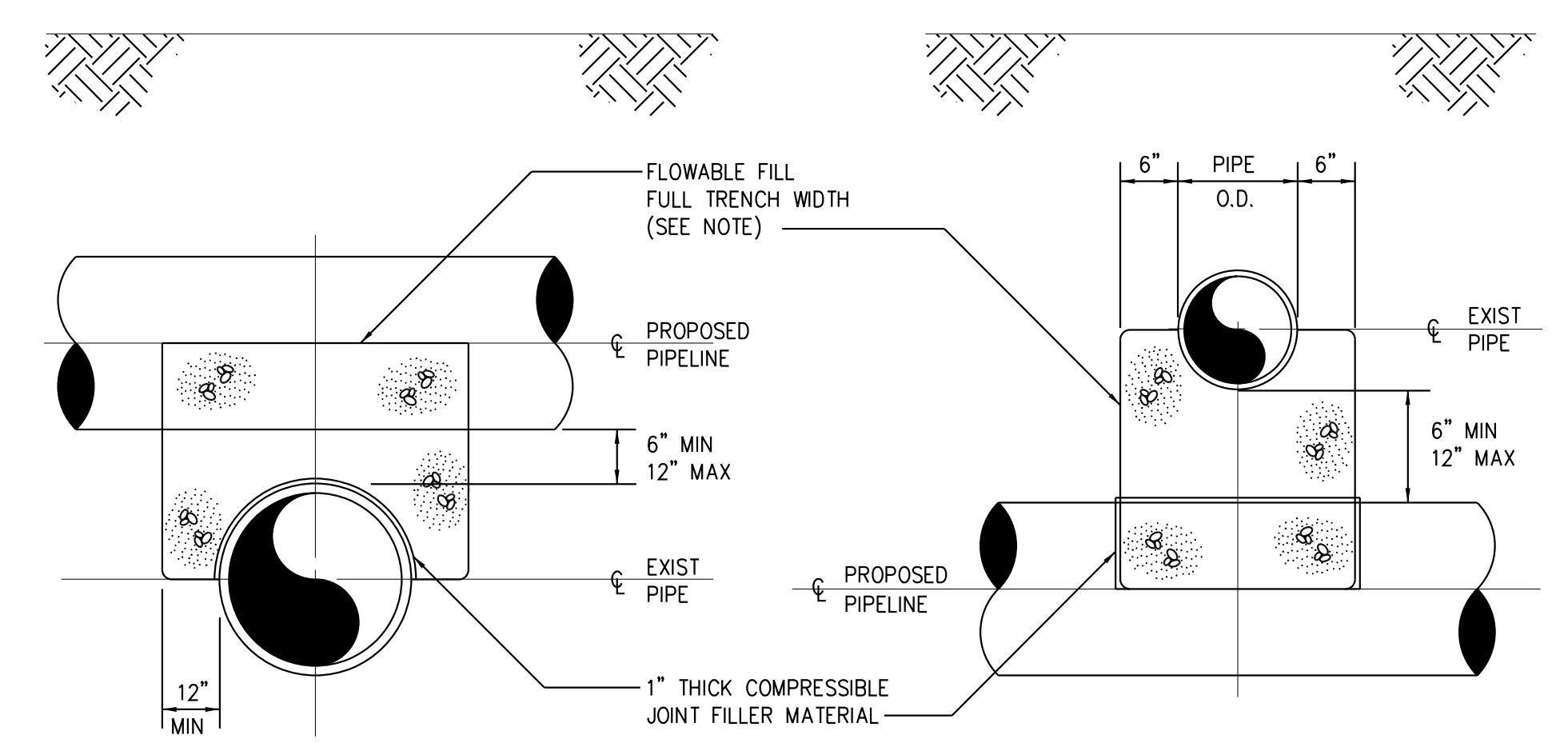
**2 TRENCH EXCAVATION LIMITS**  
 UC-3A SCALE: N.T.S.



**3 DETECTABLE MARKING TAPE AND WIRE**  
 UC-3A SCALE: N.T.S.

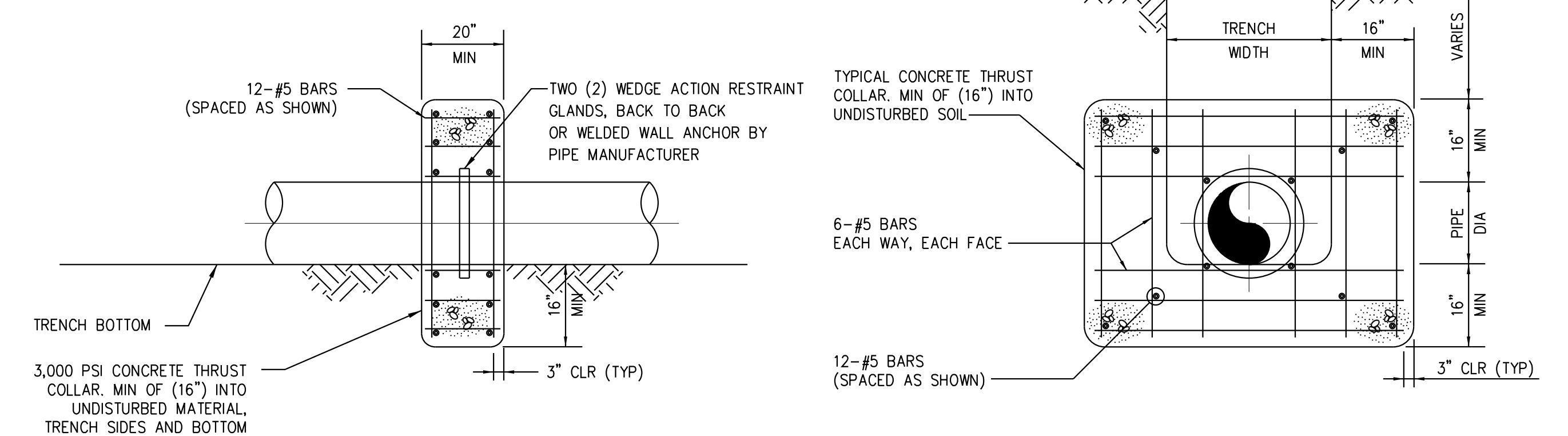


**5 HDPE TO DI PIPE TRANSITION DETAIL**  
 UC-3A SCALE: N.T.S.



NOTE: NO ENCASEMENT REQUIRED FOR VERTICAL SEPARATION GREATER THAN 12"

**4 PIPE CROSSING DETAIL**  
 UC-3A SCALE: N.T.S.



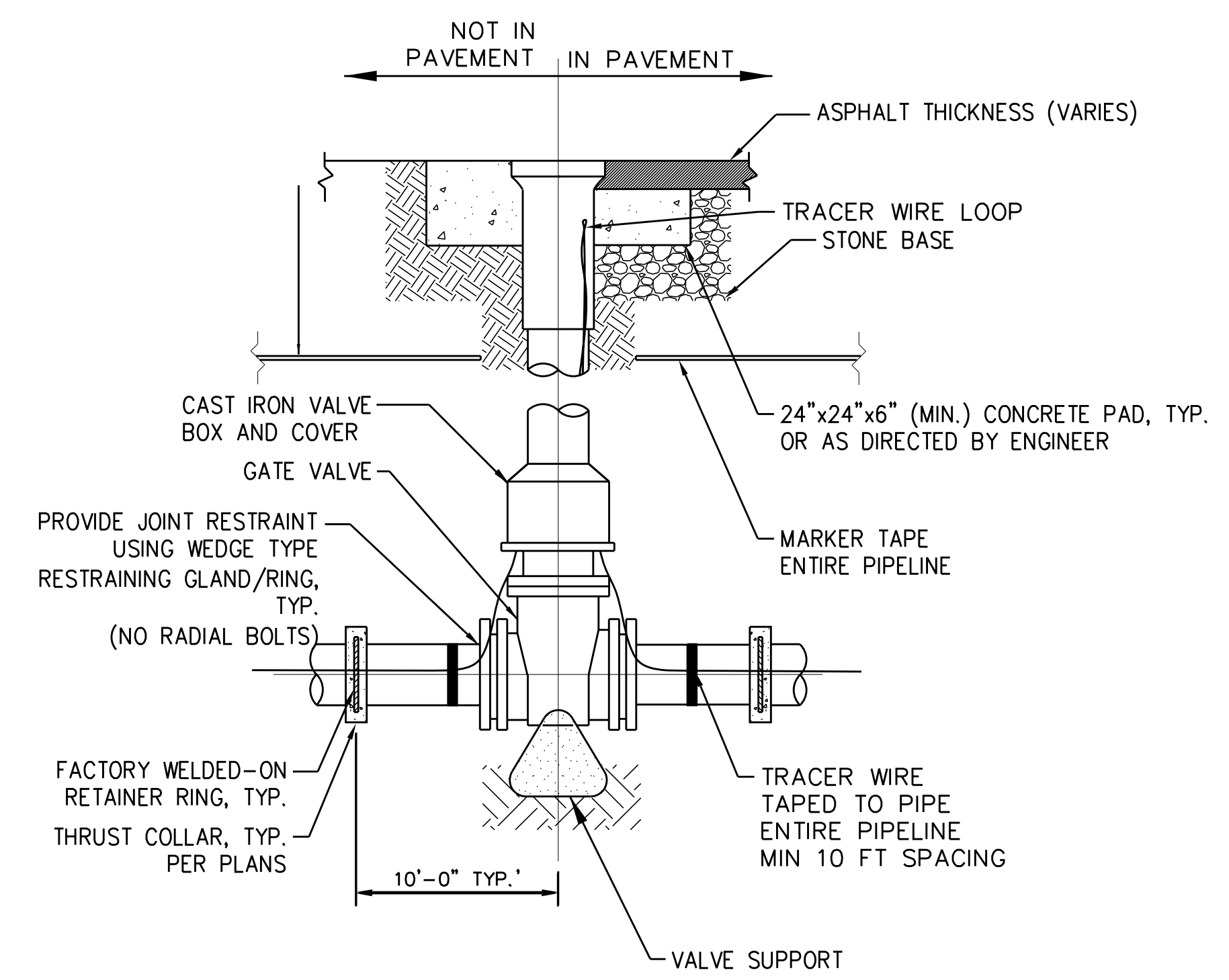
- NOTES:
1. STABILIZE BASE IF REQUIRED, AS DIRECTED BY ENGINEER, TO SUPPORT THRUST COLLAR.
  2. SOIL BEARING CAPACITY ASSUMED TO BE 2,000 PSF.

**6 THRUST COLLAR**  
 UC-3A SCALE: N.T.S.

5/14/99

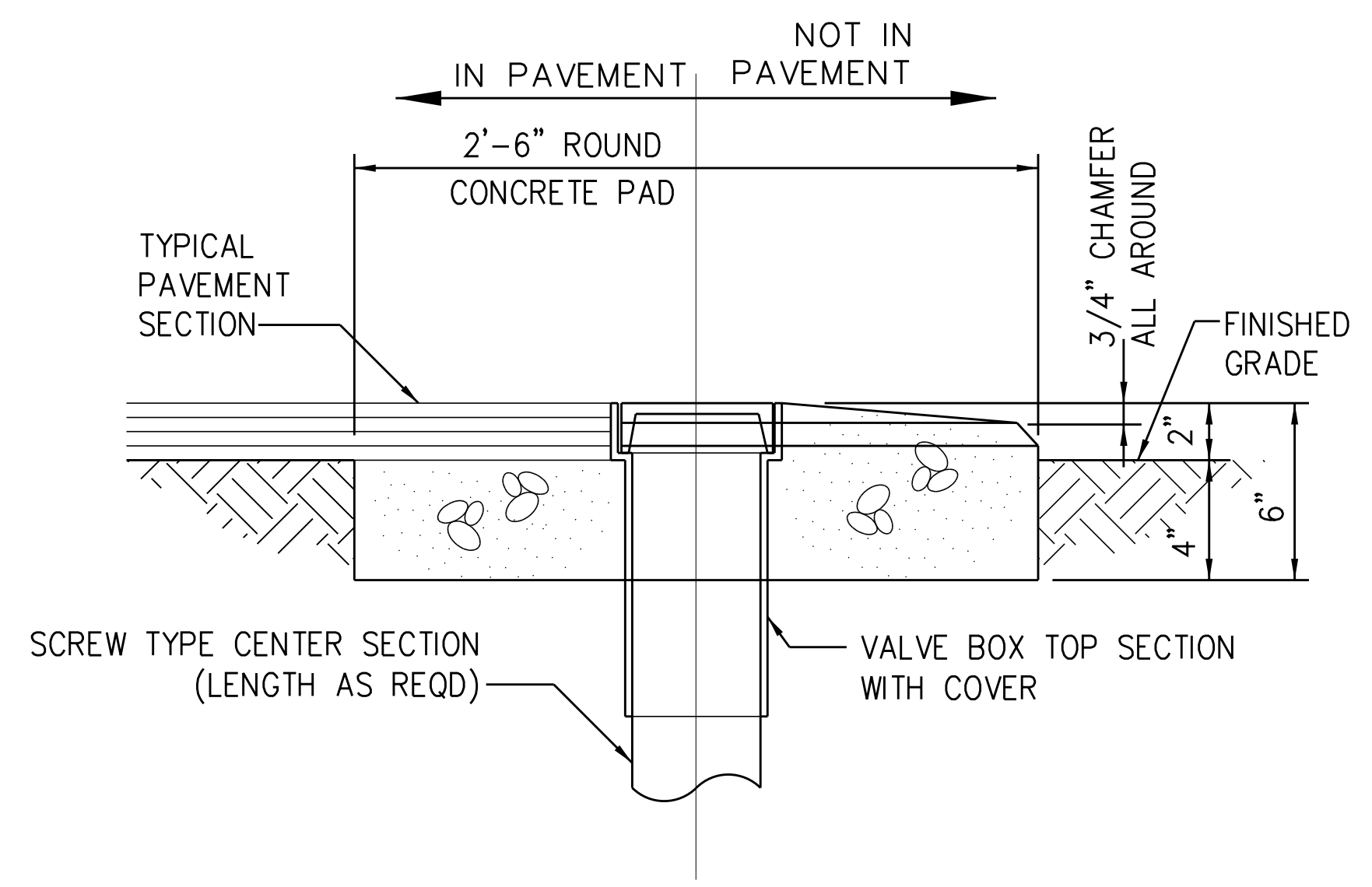
PROJECT REFERENCE NO.	SHEET NO.
B-5534	UC-3B
DESIGNED BY: NLH	
DRAWN BY: CDR	
CHECKED BY: CPM	
APPROVED BY: NLH	
REVISED:	
NORTH CAROLINA DEPARTMENT OF TRANSPORTATION UTILITIES ENGINEERING SEC. PHONE: (919) 707-6690 FAX: (919) 250-4151 UTILITY CONSTRUCTION PLANS ONLY	
DOCUMENT NOT CONSIDERED FINAL UNTIL ALL SIGNATURES ARE COMPLETED	

**UTILITY CONSTRUCTION**



**NOTES:**  
 1. PROVIDE HDPE INSERTS IN ALL VALVE BOXES.

**1 GATE VALVE ASSEMBLY (FOR 4" THRU 12" VALVES)**  
 UC-3B SCALE: N.T.S.

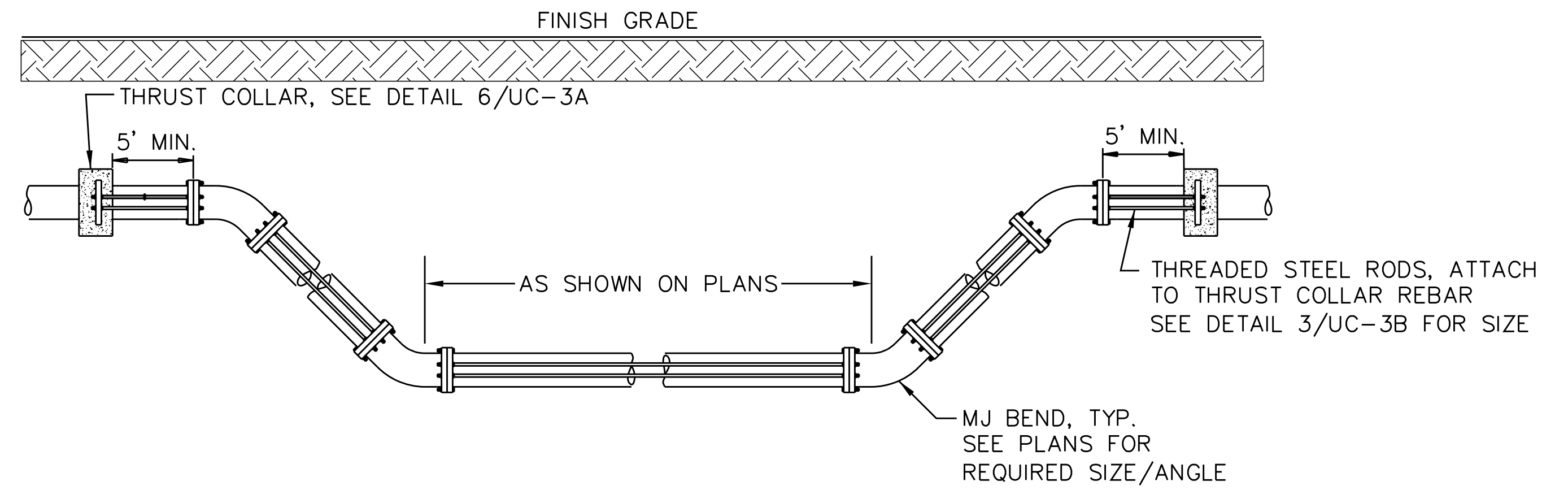


**2 VALVE BOX PAD**  
 UC-3B SCALE: N.T.S.

DESIGN PRESSURE		
200 PSI		
PIPE SIZE	ROD DIA	NUMBER REQ'D
4" TO 8"	3/4"	2
10" TO 20"	3/4"	4
24"	3/4"	6
30"	1"	6
36"	1"	8

1. THREADED RODS FOR PIPE DIAMETERS LARGER THAN 12" SHALL BE ASTM A193 (GRADE B7). ALL OTHER THREADED RODS SHALL BE ASTM A36.
2. RODS SHALL BE EQUALLY SPACED AROUND PIPE.

**3 THREADED ROD SCHEDULE**  
 UC-3B SCALE: N.T.S.



- NOTES:**
1. RODDING AND CONNECTING HARDWARE SHALL BE STAINLESS STEEL, HOT DIPPED GALVANIZED, OR COATED WITH MIN 2 COATS OF BITUMINOUS PAINT AFTER INSTALLATION.
  2. CONCRETE SHALL NOT CONTACT OR OBSCURE MJ FITTINGS OR HARDWARE.
  3. ALL PIPE AND FITTINGS BETWEEN THRUST COLLARS SHALL BE MECHANICALLY RESTRAINED.

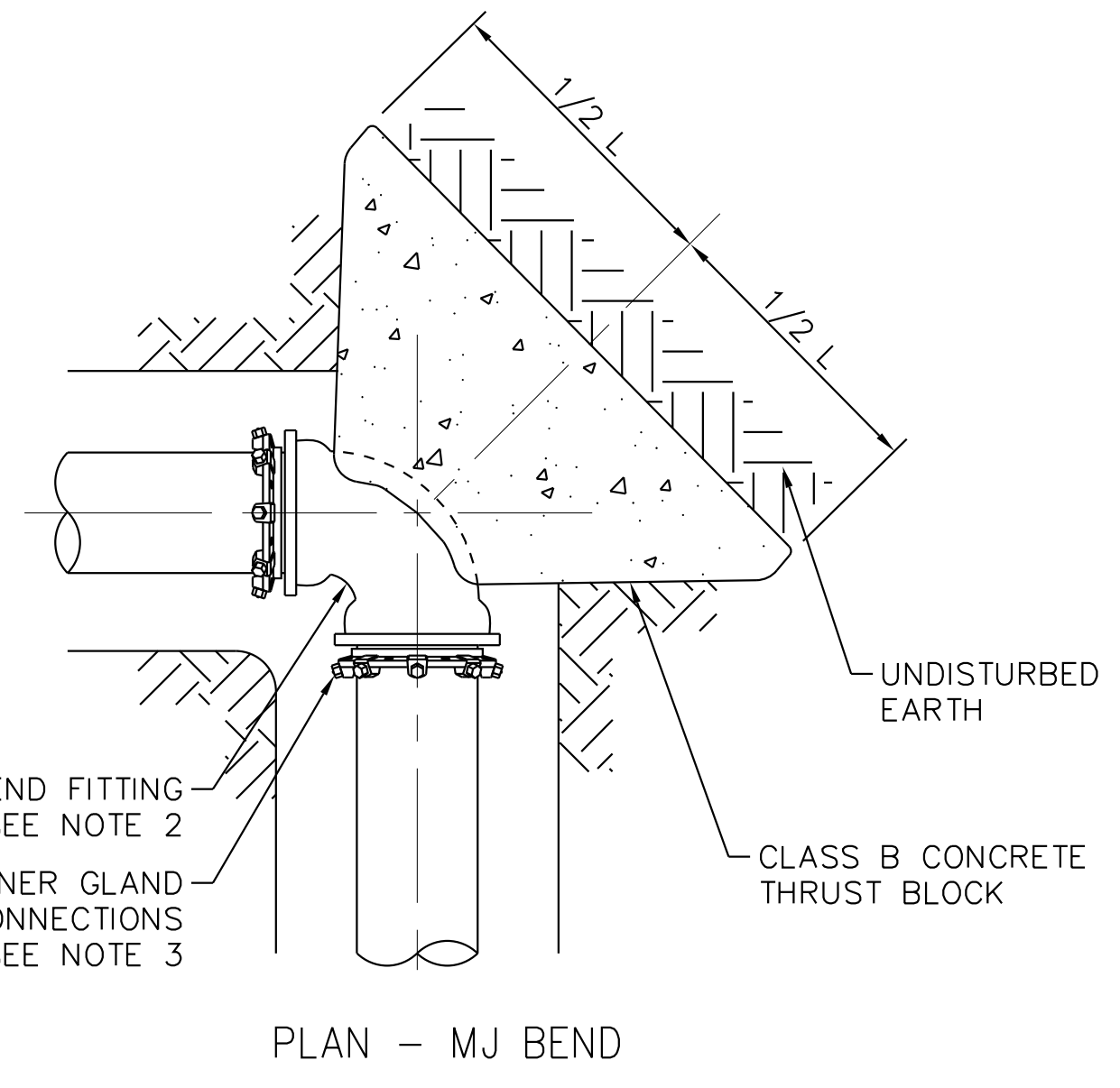
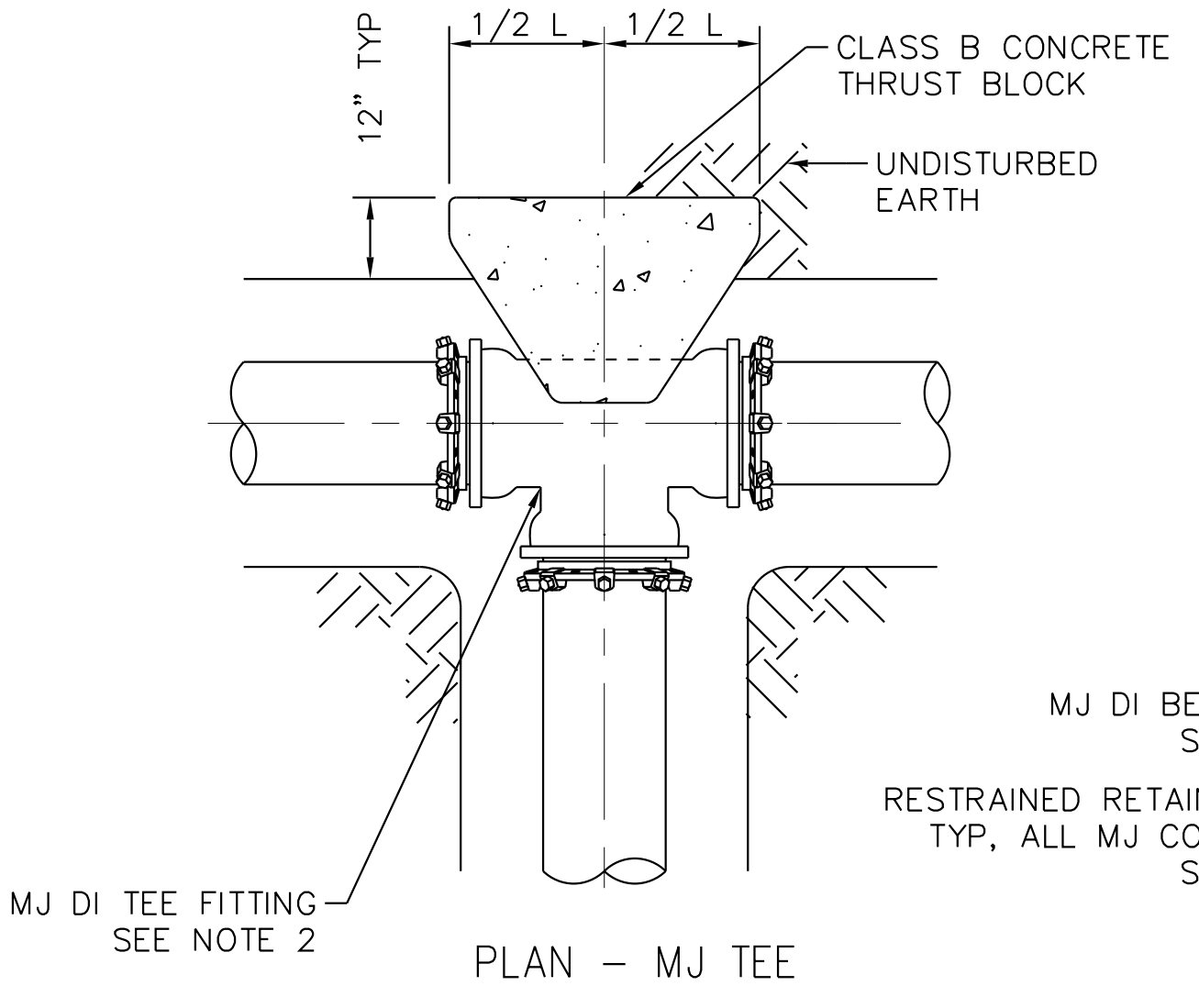
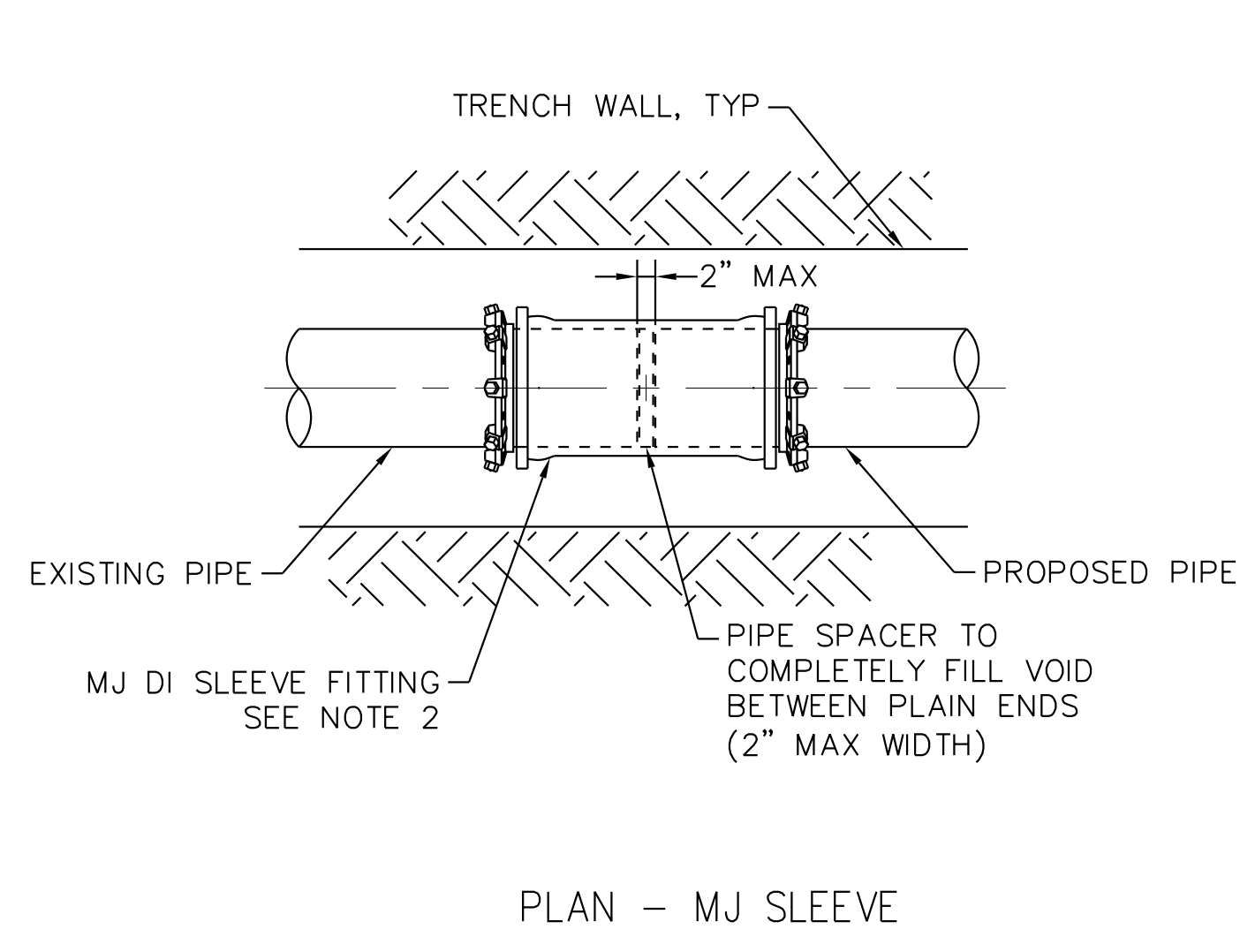
**4 STANDARD MJ VERTICAL BEND**  
 UC-3B SCALE: N.T.S.



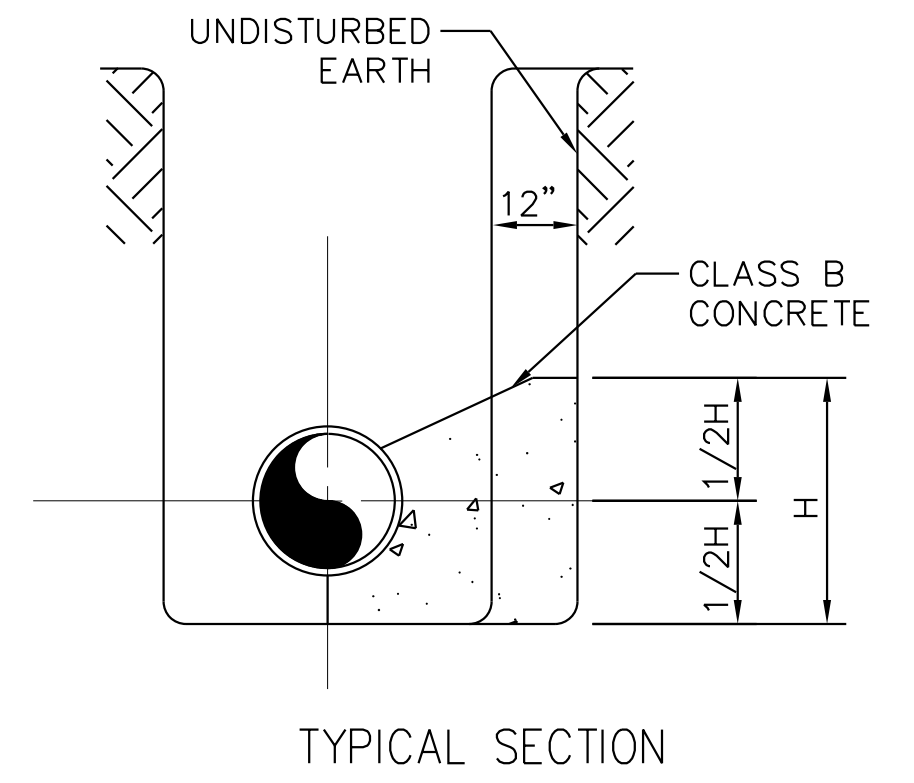
5/14/99

PROJECT REFERENCE NO. B-5534	SHEET NO. UC-3C
DESIGNED BY: NLH	
DRAWN BY: CDR	
CHECKED BY: CPM	
APPROVED BY: NLH	
REVISER:	
NORTH CAROLINA DEPARTMENT OF TRANSPORTATION UTILITIES ENGINEERING SEC. PHONE: (919) 707-6690 FAX: (919) 250-4151	
UTILITY CONSTRUCTION PLANS ONLY <b>DOCUMENT NOT CONSIDERED FINAL UNTIL ALL SIGNATURES ARE COMPLETED</b>	

**UTILITY CONSTRUCTION**



PIPE SIZE (IN)	FITTING							
	90° / TEE		45°		22.5°		11.25°	
	H	W	H	W	H	W	H	W
4	2.0	4.0	1.5	2.9	1.0	2.1	0.7	1.5
6	2.0	4.0	1.5	2.9	1.0	2.1	0.7	1.5
8	2.6	5.2	1.9	3.8	1.4	2.7	1.0	1.9
12	3.8	7.6	2.8	5.6	2.0	4.0	1.4	2.8
16	5.0	10.0	3.7	7.4	2.6	5.3	1.9	3.7
24	7.4	14.9	5.5	11.0	3.9	7.8	2.8	5.5
30	9.2	18.5	6.8	13.6	4.9	9.7	3.4	6.9
36	11.1	22.1	8.1	16.3	5.8	11.6	4.1	8.2



- NOTES:
- THRUST BLOCK DIMENSIONS BASED ON AVERAGE SOIL PASSIVE BEARING STRENGTH OF 2000 PSF USING SF OF 1.5 AND DESIGN TEST PRESSURE OF 200 PSI. FOR PIPE SIZES NOT LISTED, USE DIMENSIONS FOR NEXT LARGER PIPE SIZE.
  - ALL FITTINGS SHALL BE DUCTILE IRON MECHANICAL JOINT (DI MJ) OF THE SAME OR HIGHER PRESSURE RATING AS THE HOST PIPE AND SHALL BE RESTRAINED AGAINST THRUST VIA RESTRAINT GLANDS AND CONCRETE THRUST BLOCKING.
  - RESTRAINT GLANDS DESIGNED FOR THE INTENDED USE. RESTRAINT GLANDS SHALL CONSIST OF MULTIPLE GRIPPING WEDGES INCORPORATED INTO A FOLLOWER GLAND AND BOLT-ACTUATED BY TORQUE-LIMITING TWIST OFF NUTS.
  - DIRECT CONTACT BETWEEN CONCRETE AND FITTINGS, PIPE, OR HARDWARE SHALL NOT BE PERMITTED. THRUST BLOCK SHALL NOT OBSTRUCT ACCESS TO RESTRAINT GLAND BOLTS.

1 **THRUST RESTRAINT FOR FITTINGS**  
 UC-3C SCALE: N.T.S.









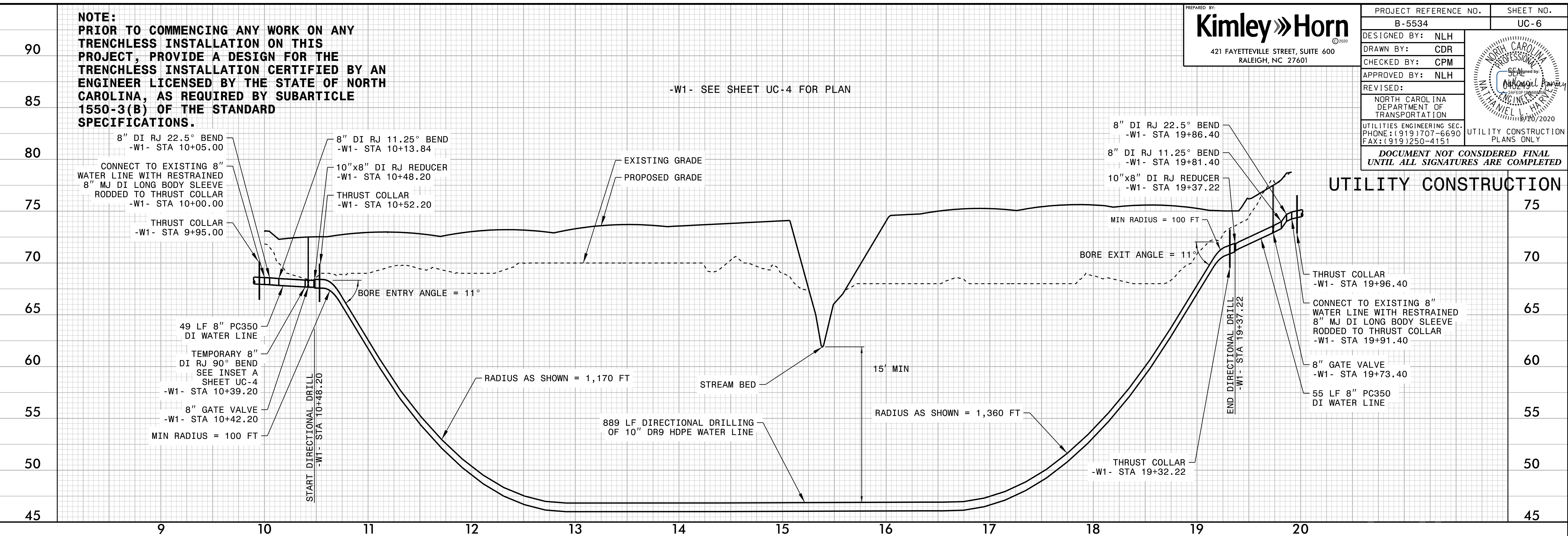


5/14/20

**NOTE:**  
**PRIOR TO COMMENCING ANY WORK ON ANY TRENCHLESS INSTALLATION ON THIS PROJECT, PROVIDE A DESIGN FOR THE TRENCHLESS INSTALLATION CERTIFIED BY AN ENGINEER LICENSED BY THE STATE OF NORTH CAROLINA, AS REQUIRED BY SUBARTICLE 1550-3(B) OF THE STANDARD SPECIFICATIONS.**

PREPARED BY:  
**Kimley»Horn**  
 421 FAYETTEVILLE STREET, SUITE 600  
 RALEIGH, NC 27601

PROJECT REFERENCE NO. B-5534	SHEET NO. UC-6
DESIGNED BY: NLH	
DRAWN BY: CDR	
CHECKED BY: CPM	
APPROVED BY: NLH	
REVISED:	UTILITY CONSTRUCTION PLANS ONLY
NORTH CAROLINA DEPARTMENT OF TRANSPORTATION UTILITIES ENGINEERING SEC. PHONE: (919)707-6690 FAX: (919)250-4151	
<b>DOCUMENT NOT CONSIDERED FINAL UNTIL ALL SIGNATURES ARE COMPLETED</b>	



**UTILITY CONSTRUCTION**

3/4/2020