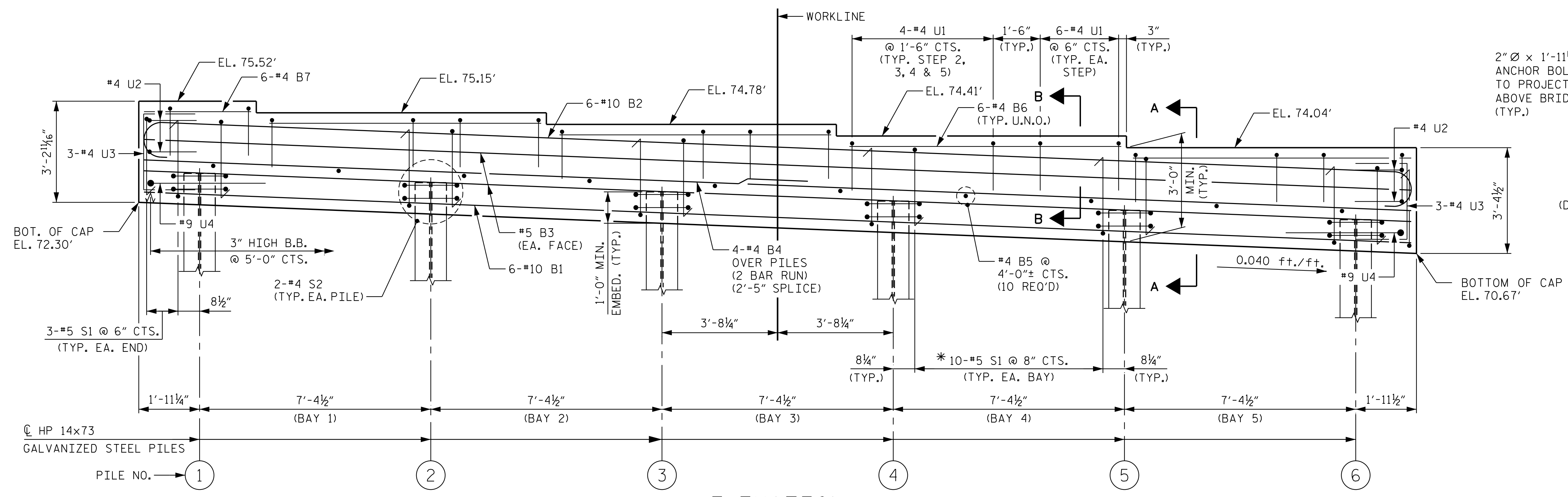
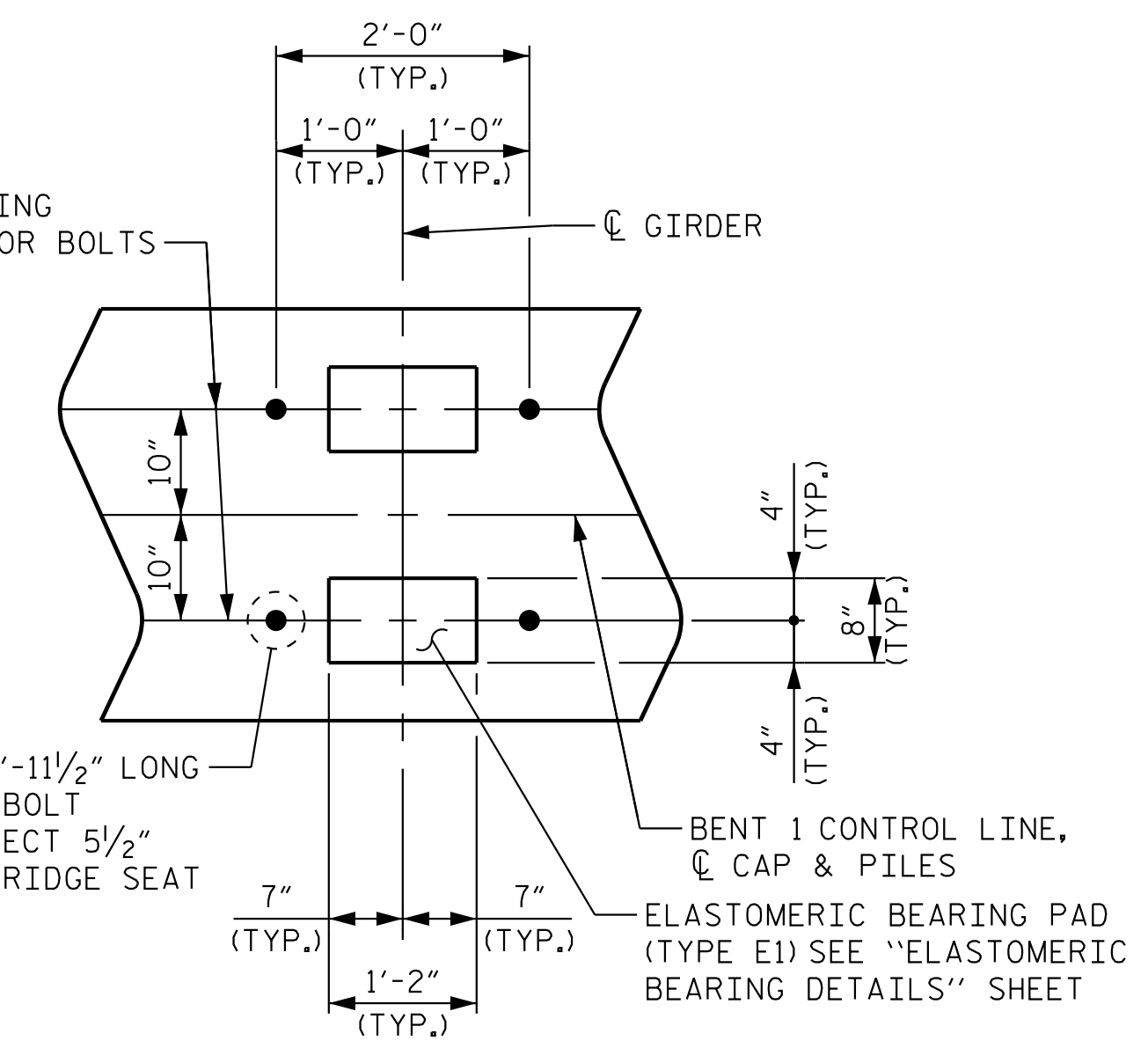
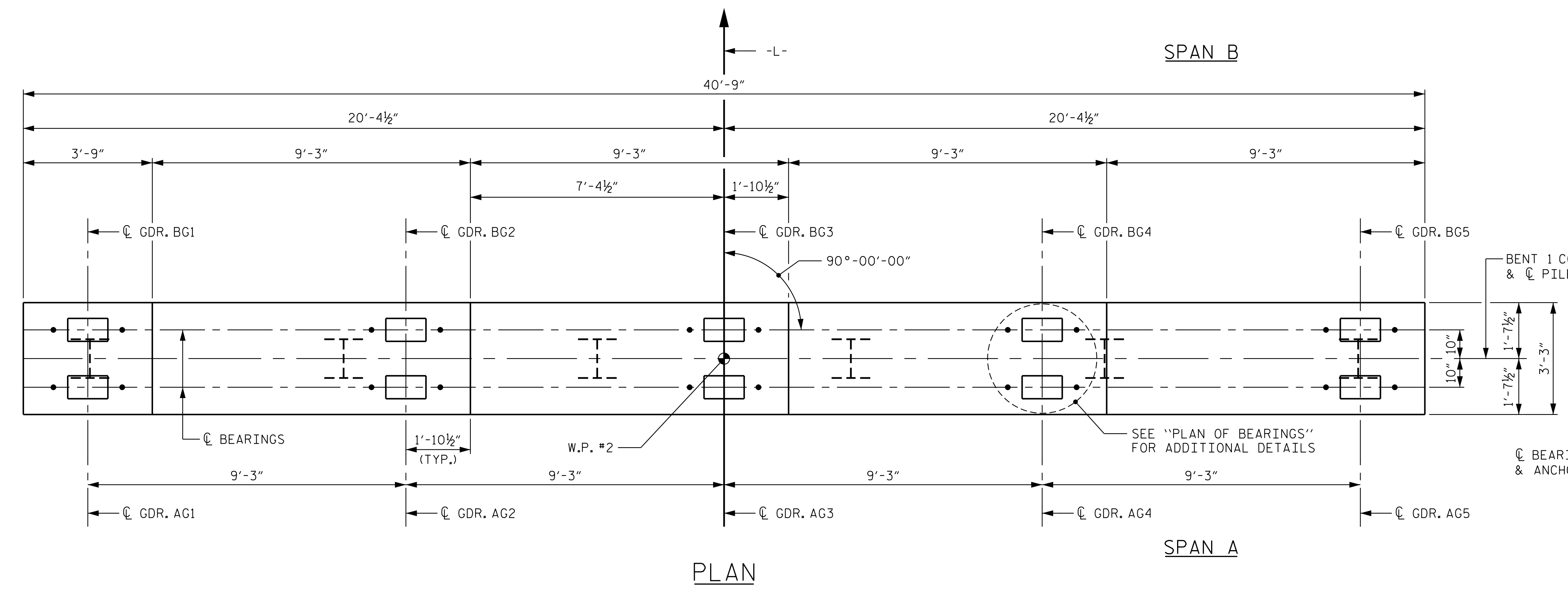


### NOTES

FOR SECTION A-A, PILE SPLICE DETAILS AND PARTIAL SECTION B-B, SEE SHEET 2 OF 2.

STIRRUPS IN CAP MAY BE SHIFTED AS NECESSARY TO CLEAR ANCHOR BOLTS.

GALVANIZE THE TOP OF EACH INTERIOR BENT PILE A MINIMUM OF 27 FEET. GALVANIZE IN ACCORDANCE WITH SECTION 1076 OF THE STANDARD SPECIFICATION.



**TOP OF PILE ELEVATIONS**

1	73.22'
2	72.93'
3	72.63'
4	72.34'
5	72.04'
6	71.75'



**Kimley»Horn**

421 Fayetteville Street, Suite 600  
Raleigh, NC 27601-1772  
Phone (919) 677-2000 NC LICENSE # F-0102

PROJECT NO. B-5534  
DUPLIN COUNTY  
STATION: 21+68.50 -L-

SHEET 1 OF 2

REVISIONS					
NO.	BY:	DATE:	NO.	BY:	DATE:
1			3		
2			4		

SHEET NO. S-25  
TOTAL SHEETS 34

**DOCUMENT NOT CONSIDERED FINAL UNLESS ALL SIGNATURES COMPLETED**

2/20/2020 K:\BID Structures\Bridges\NC\01036500 - B-5534 Cap Dgn\B5534\_SML.B1\_300082.dgn

DRAWN BY: D. D. LOWERY DATE: 02/2020  
CHECKED BY: J. C. WILSON DATE: 02/2020  
DESIGN ENGINEER OF RECORD: P. D. COOKSEY DATE: 02/2020