

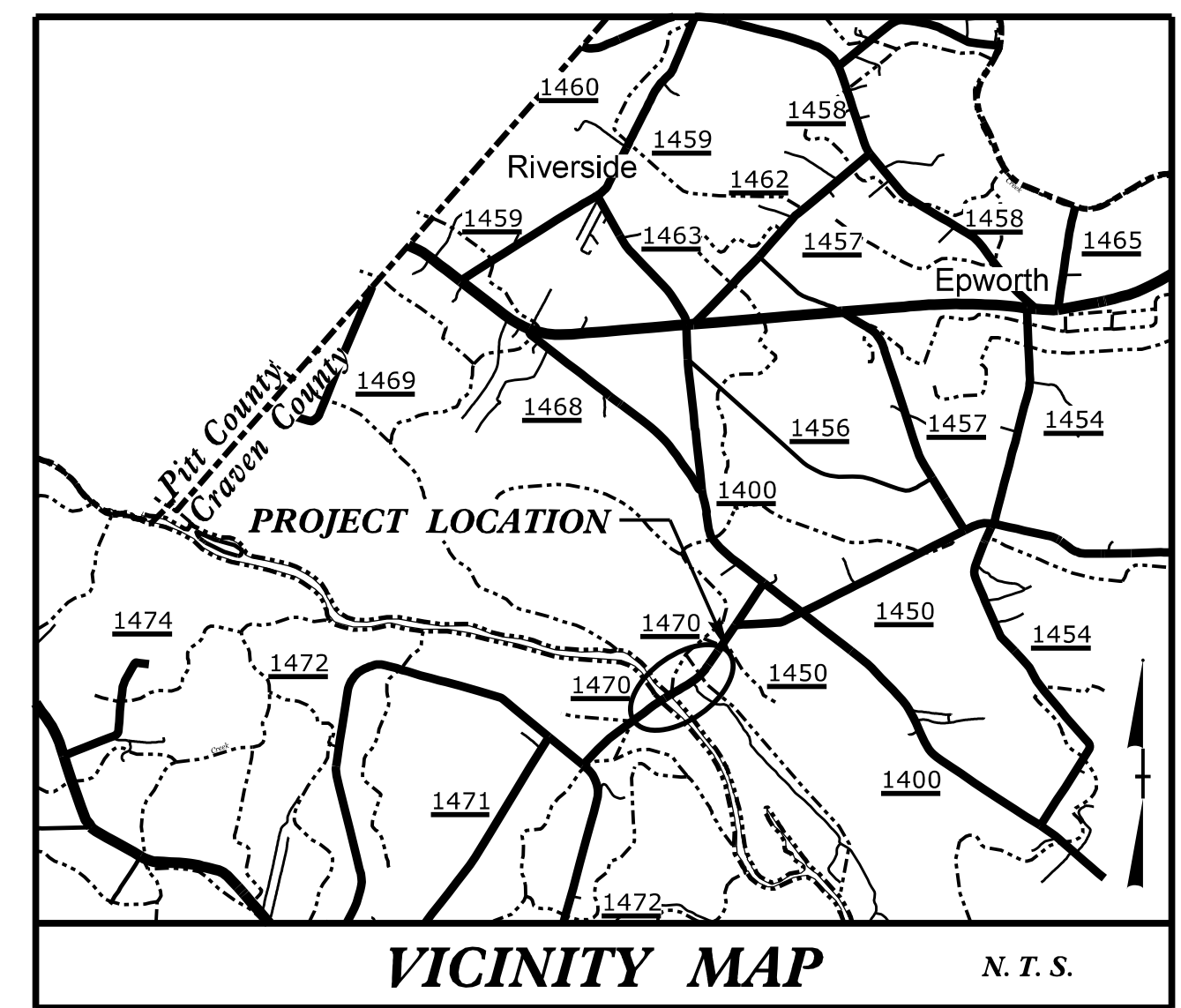
09/08/99

TIP PROJECT: B-4484

CONTRACT:

T.I.P. NO.	SHEET NO.
B-4484	UO-1

NOTE:
 ALL UTILITY WORK SHOWN ON THIS SHEET WILL BE DONE BY OTHERS. NO PAYMENT WILL BE MADE TO THE CONTRACTOR FOR UTILITY WORK SHOWN ON THIS SHEET.

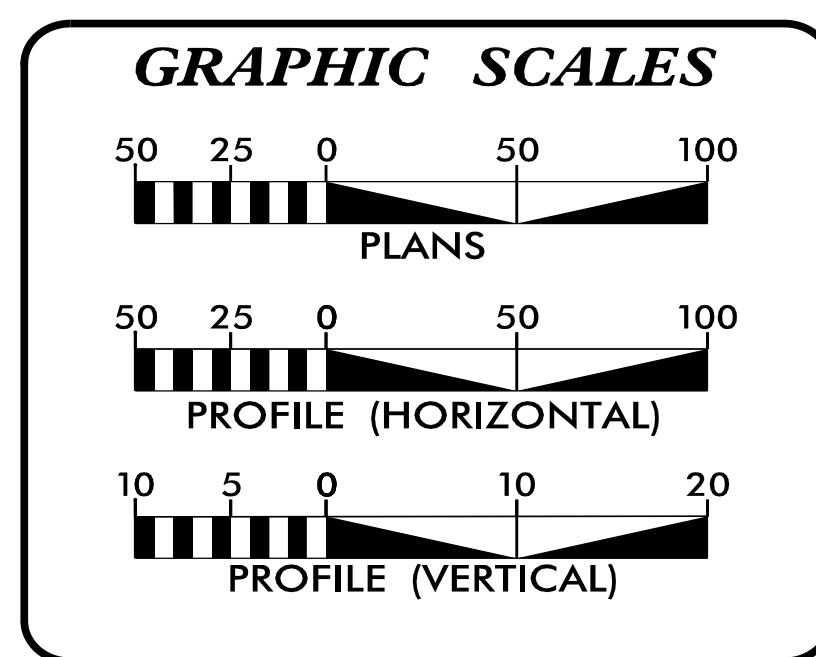
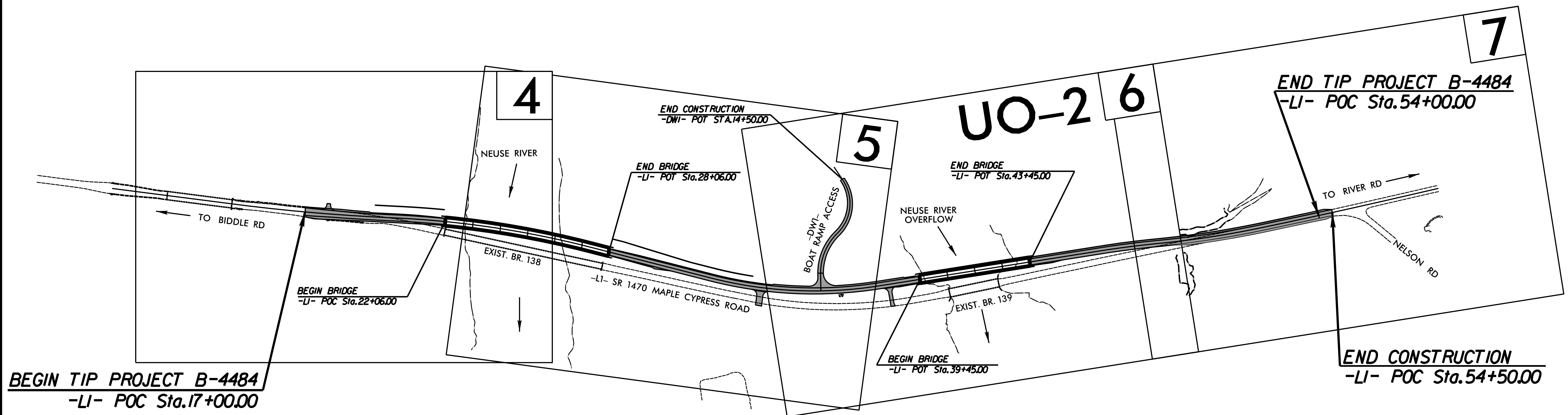
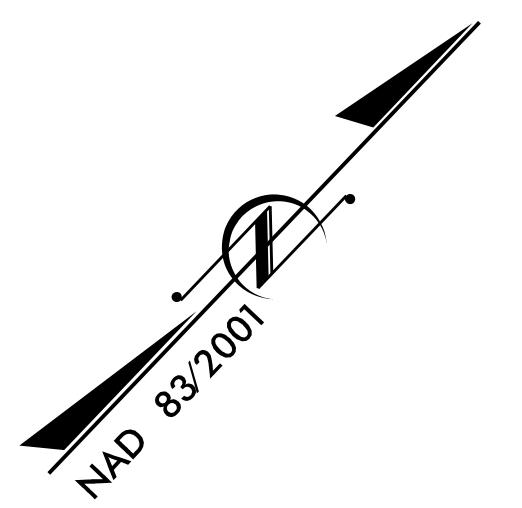


STATE OF NORTH CAROLINA
 DIVISION OF HIGHWAYS

**UTILITIES BY OTHERS PLANS
 CRAVEN COUNTY**

LOCATION: REPLACE BRIDGES NO. 138 & 139 OVER NEUSE RIVER AND NEUSE RIVER OVERFLOW ON SR 1470 (MAPLE CYPRESS ROAD)

TYPE OF WORK: POWER (DISTRIBUTION) AND COMMUNICATIONS



INDEX OF SHEETS

SHEET NO.:	DESCRIPTION:
UO-1	TITLE SHEET
UO-2	UBO PLAN SHEET

UTILITY OWNERS WITH CONFLICTS

(A) POWER (DISTRIBUTION) - DUKE ENERGY
 (B) COMMUNICATIONS - GENTURYLINK

PREPARED IN THE OFFICE OF:

SO-DEEP | SAM NC
 A SAM COMPANY

SO-DEEP | SAM NC, Inc.
 2800-154 Sumner Boulevard, Raleigh, NC 27616 Tel 919-878-7466

Keith Garry **UTILITY PROJECT MANAGER**
 Zaki Wafa **PROJECT UTILITY COORDINATOR**

**DIVISION OF HIGHWAYS
 DIVISION 02**

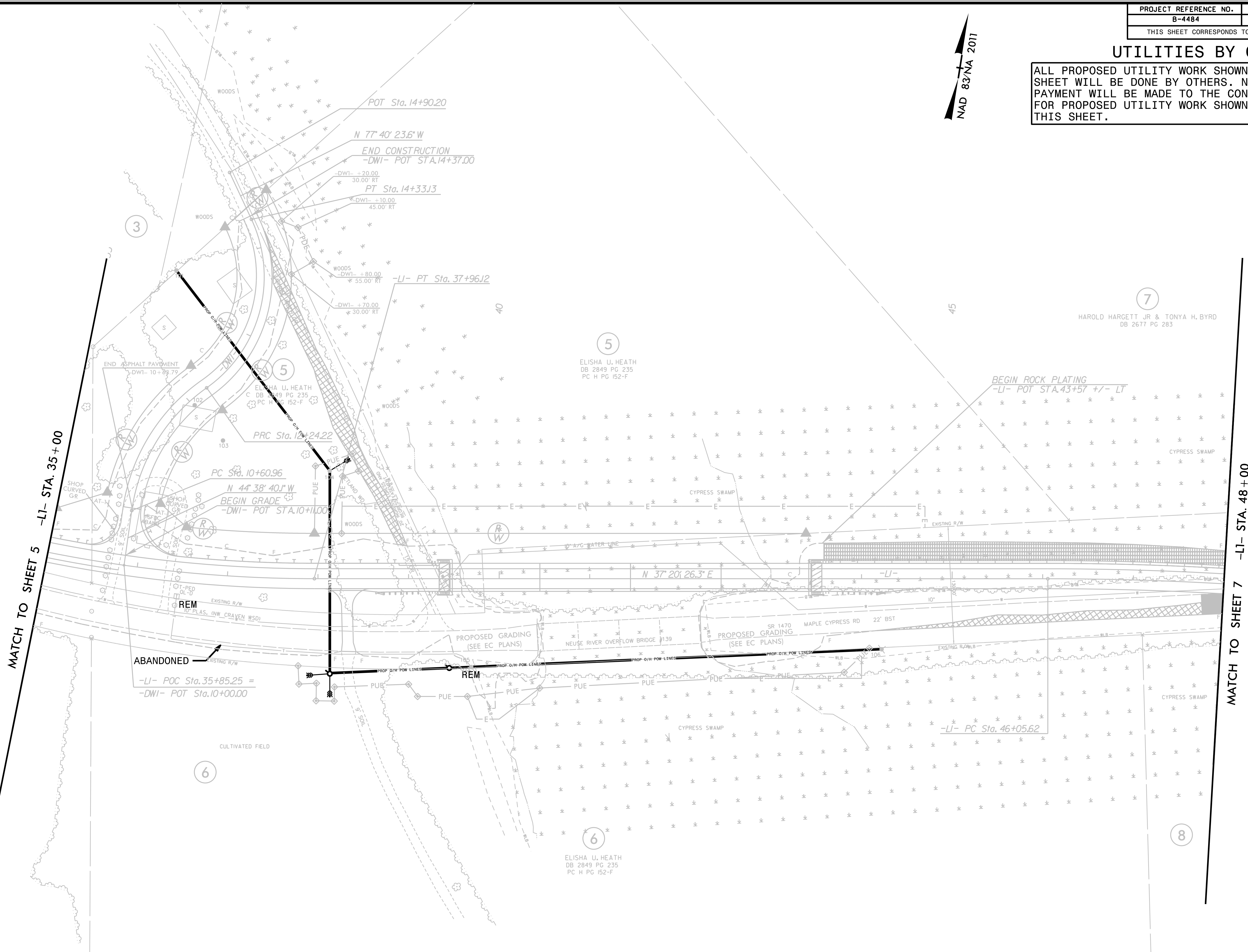
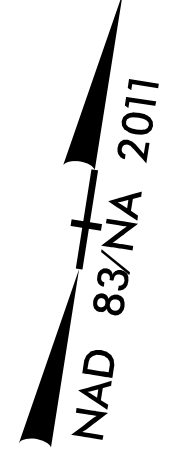
DIV ADDRESS
 1037 W. H. Smith Blvd
 Greenville, NC 27835

David Kramer **DIVISION CONTACT #1**
 Casey Whitley, PE **DIVISION CONTACT #2**

\$\$\$\$\$ SYSTEM \$\$\$\$\$\$
 \$\$\$ DDN \$\$\$
 \$\$\$ USERNAME \$\$\$

UTILITIES BY OTHERS

ALL PROPOSED UTILITY WORK SHOWN ON THIS SHEET WILL BE DONE BY OTHERS. NO PAYMENT WILL BE MADE TO THE CONTRACTOR FOR PROPOSED UTILITY WORK SHOWN ON THIS SHEET.



MATCH TO SHEET 5 -LI- STA. 35+00

MATCH TO SHEET 7 -LI- STA. 48+00

7 HAROLD HARGETT JR & TONYA H. BYRD DB 2677 PG 283

5 ELISHA U. HEATH DB 2849 PG 235 PC H PG 152-F

5 ELISHA U. HEATH DB 2849 PG 235 PC H PG 152-F

6 ELISHA U. HEATH DB 2849 PG 235 PC H PG 152-F

6

8

5/14/99
C:\Users\jgibson\OneDrive\Documents\B-4484\UD-2\RDY-6\UTILITIES BY OTHERS.dwg
JGIBSON
11/14/2017 10:58:56 AM