

NOTES

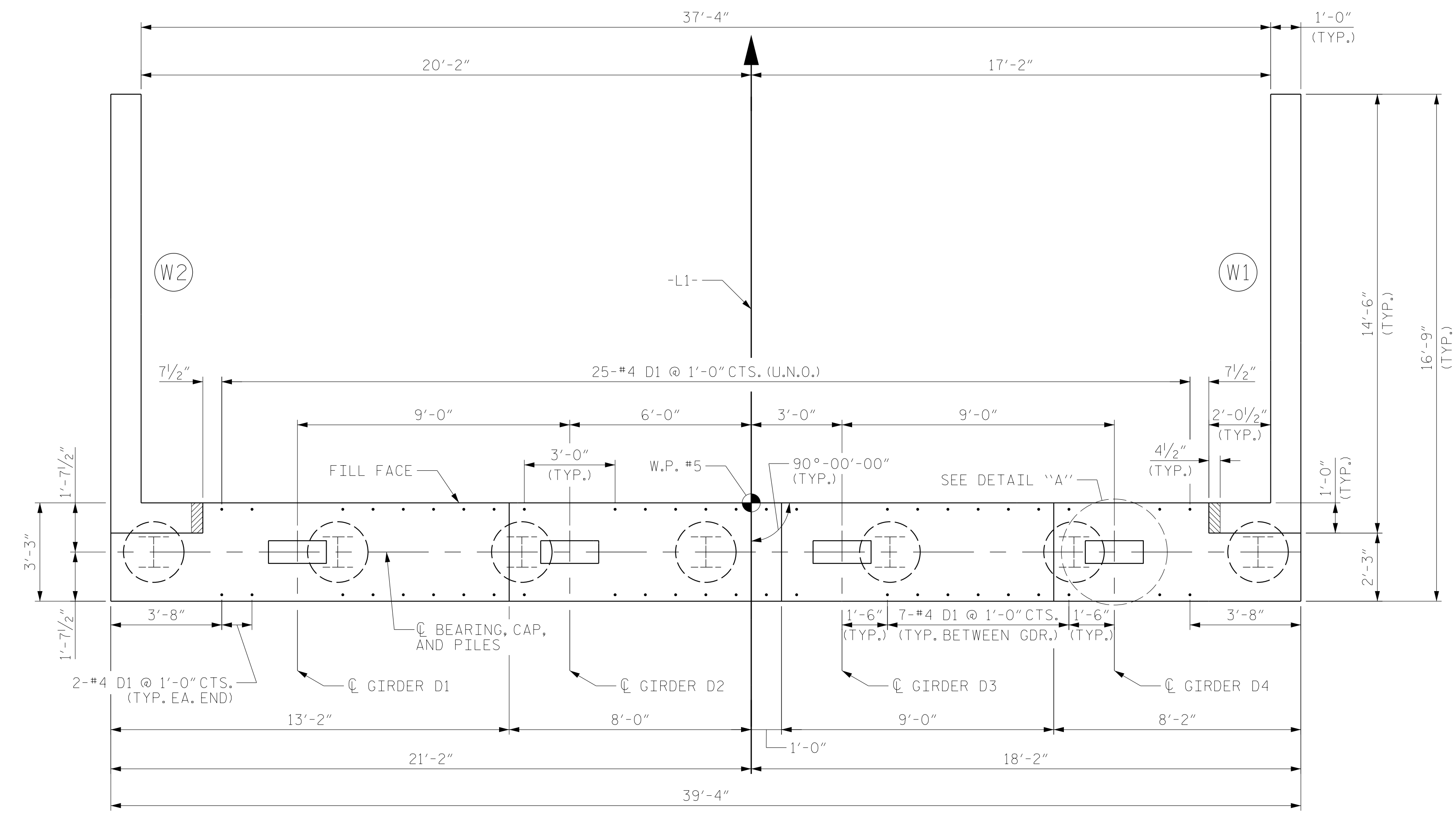
FOR SECTION A-A AND SECTION B-B, SEE SHEET 3 OF 3.

#4 D1 BARS MAY BE SHIFTED SLIGHTLY TO AVOID STIRRUPS IN CAP AND STEPS IN CAP.

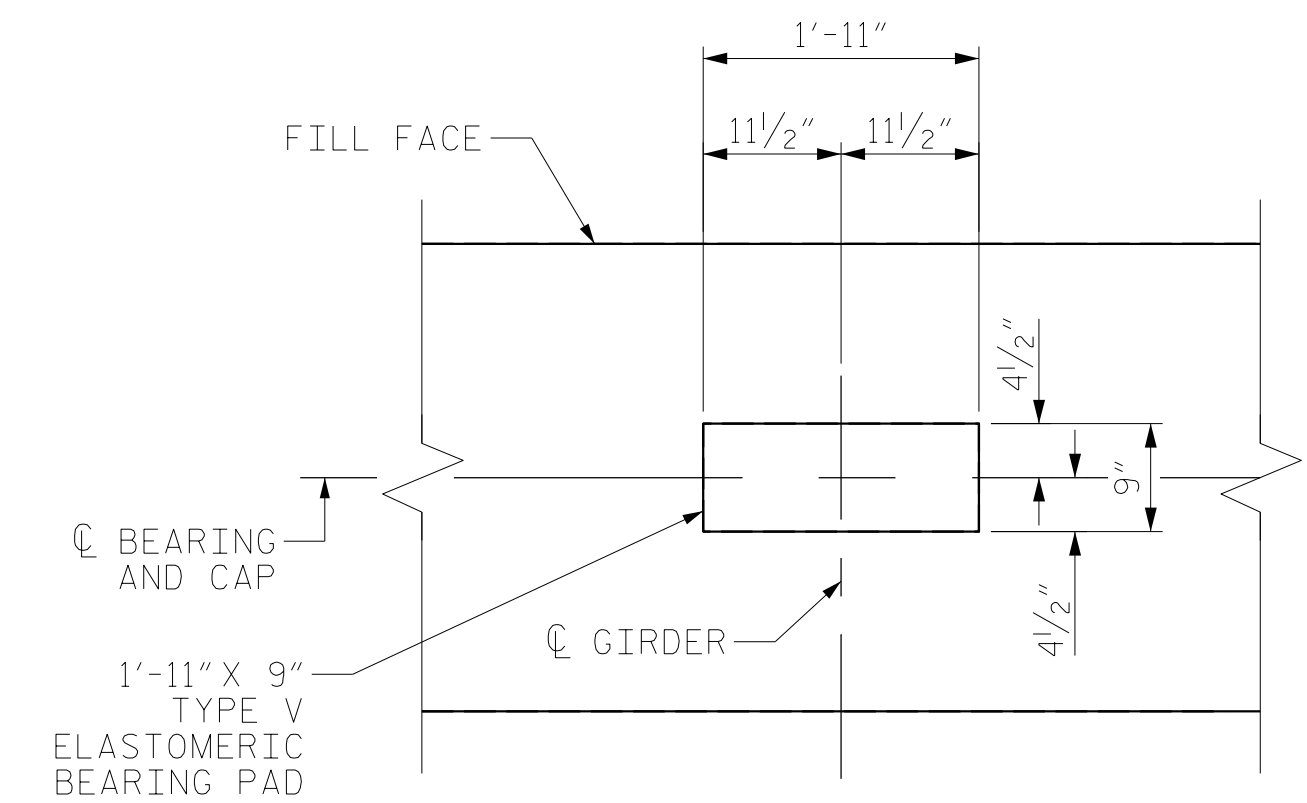
SEE SUPERSTRUCTURE SHEETS FOR UPPER PART OF INTEGRAL END BENT DETAILS.

THE CONCRETE IN THE SHADED AREA OF THE WING SHALL BE POURED AFTER THE CONCRETE BARRIER IS CAST IF SLIP FORMING IS USED.

THE TOP SURFACE OF THE END BENT CAP AND WINGS, EXCLUDING THE BEARING AREA, SHALL BE RAKED TO A DEPTH OF 1/4".

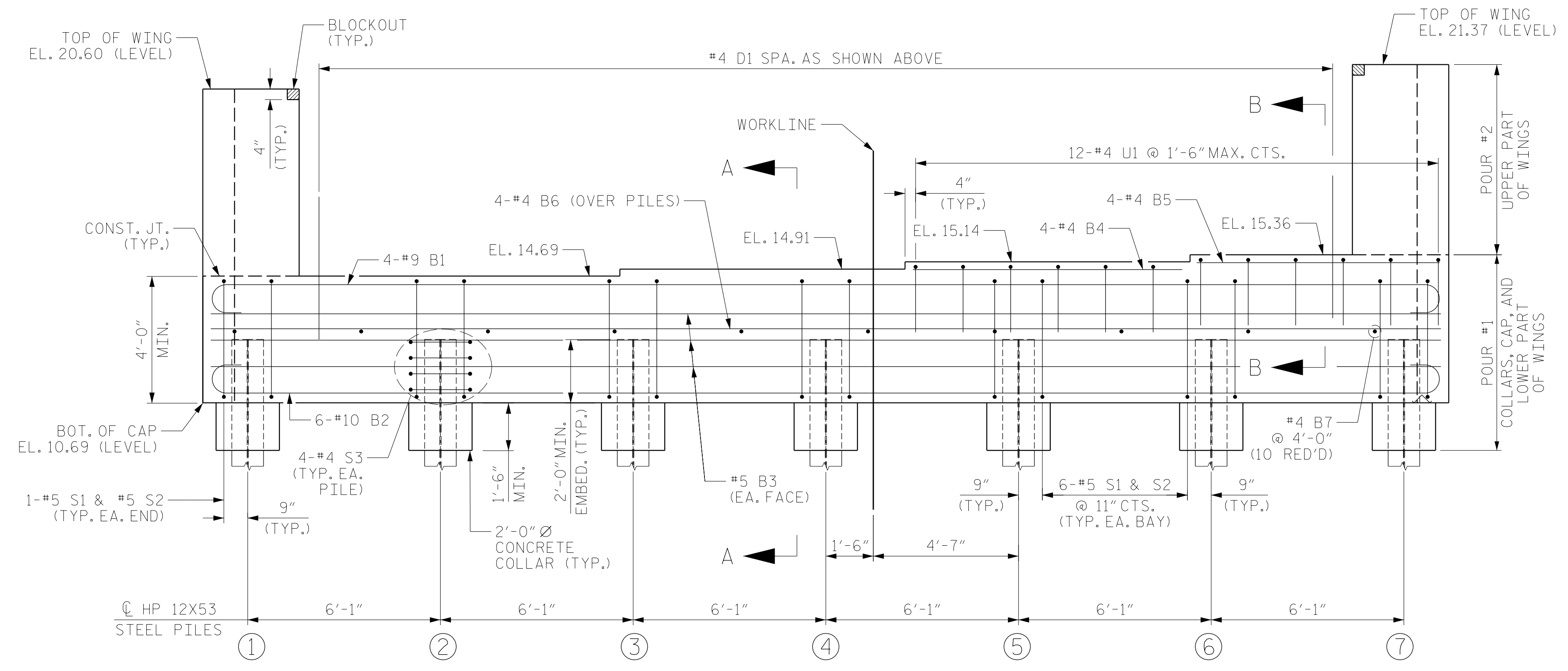


PLAN



DETAIL "A"

DIMENSIONS TYPICAL FOR EACH BEARING, PILES AND DOWELS NOT SHOWN FOR CLARITY.



ELEVATION

PROJECT NO. B-4484
CRAVEN COUNTY
 STATION: 41+45.00 -L1-

SHEET 1 OF 3 REPLACES BRIDGE NO. 240139



RS&H
 RS&H Architects-Engineers-Planners, Inc.
 8521 Six Forks Road, Suite 400
 919-926-4100 FAX 919-846-9080
 www.rsandh.com
 North Carolina License No. 50737-5403-C&E

STATE OF NORTH CAROLINA
 DEPARTMENT OF TRANSPORTATION
 RALEIGH
 SUBSTRUCTURE
**INTEGRAL
 END BENT NO. 2**

REVISIONS						SHEET NO.
NO.	BY:	DATE:	NO.	BY:	DATE:	TOTAL SHEETS
1			3			31
2			4			

DOCUMENT NOT CONSIDERED FINAL UNLESS ALL SIGNATURES COMPLETED

DRAWN BY : NSC DATE : 04/2019
 CHECKED BY : JMR DATE : 05/2019
 DESIGN ENGINEER OF RECORD: PDS DATE : 06/2019