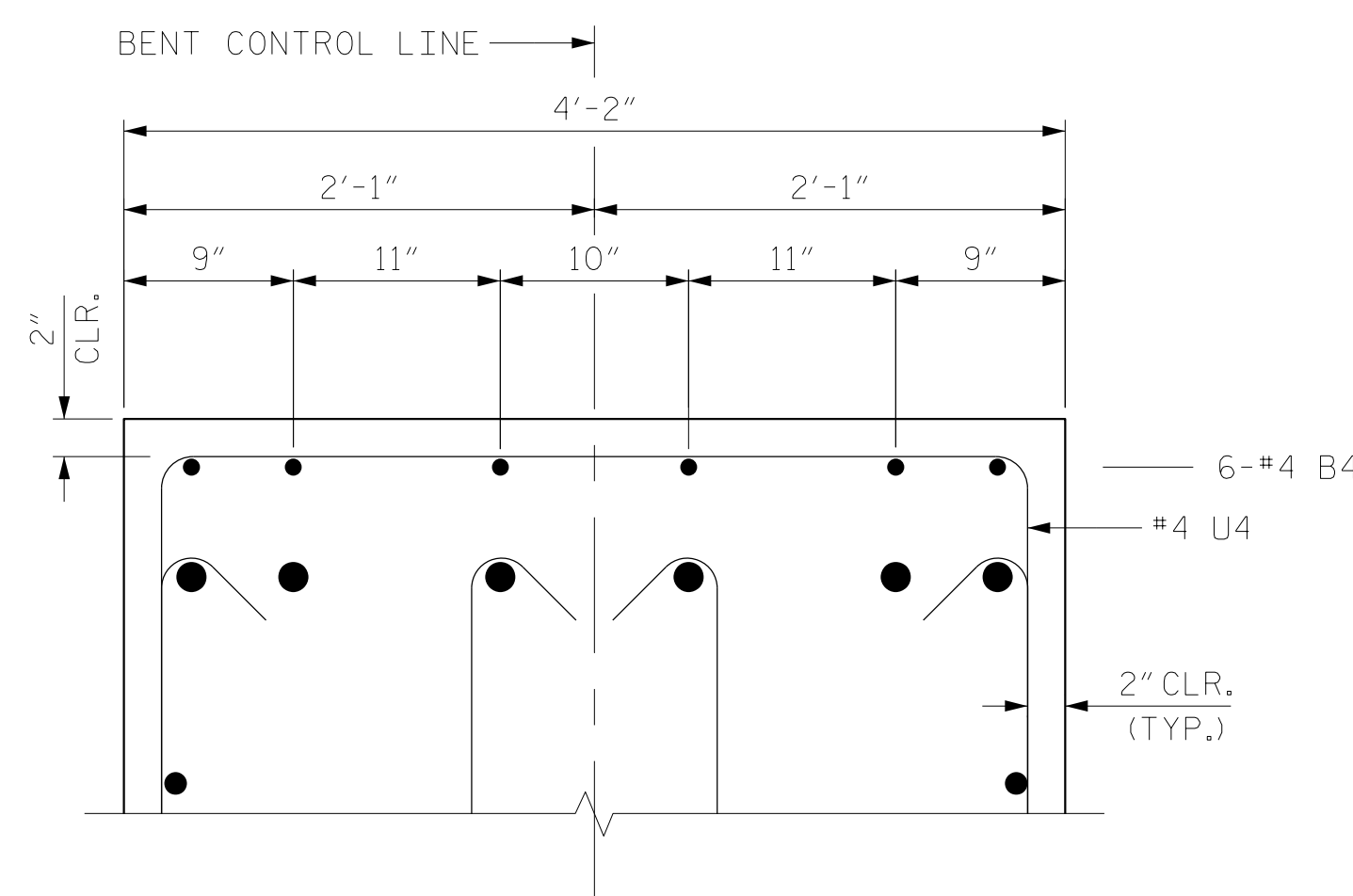
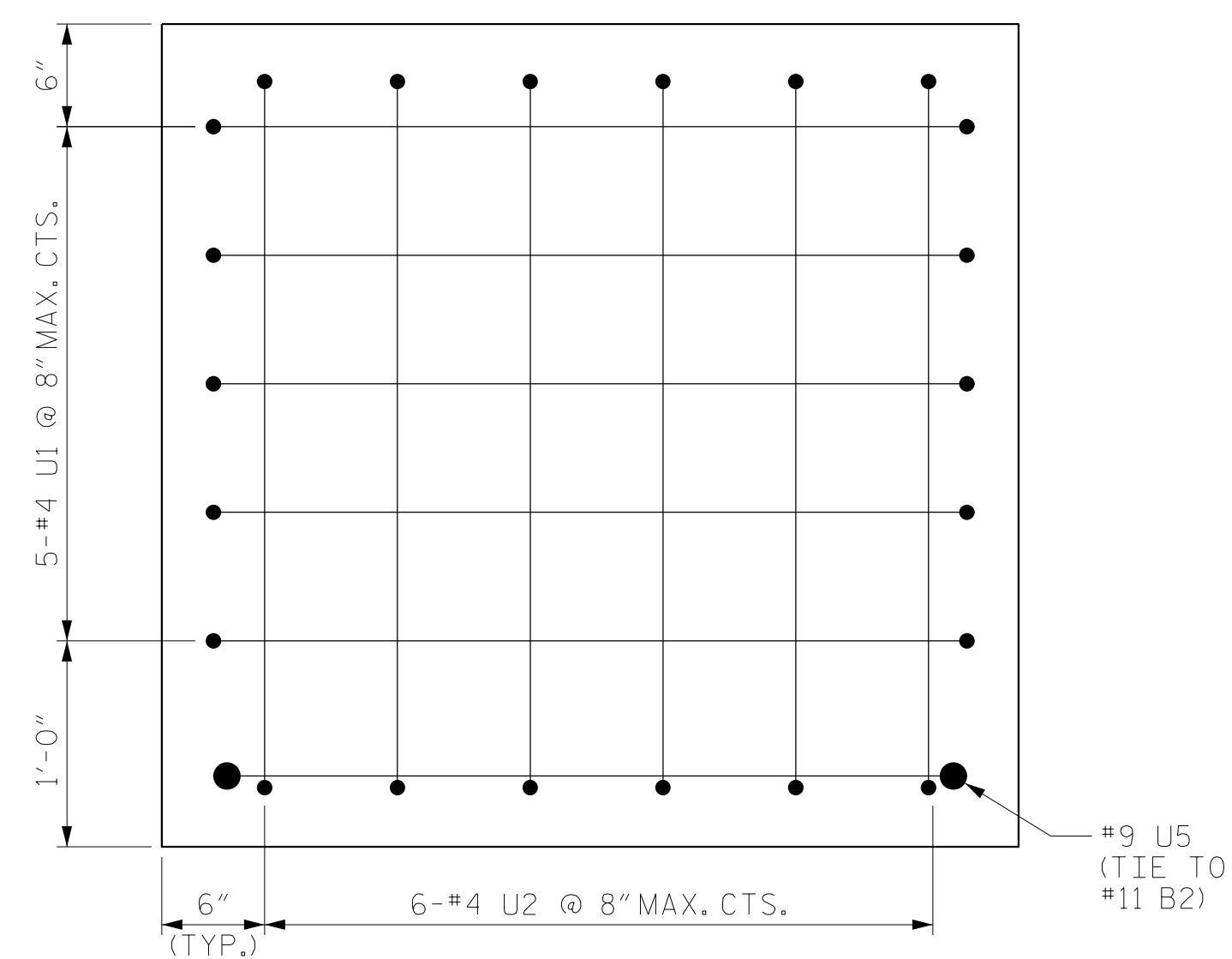


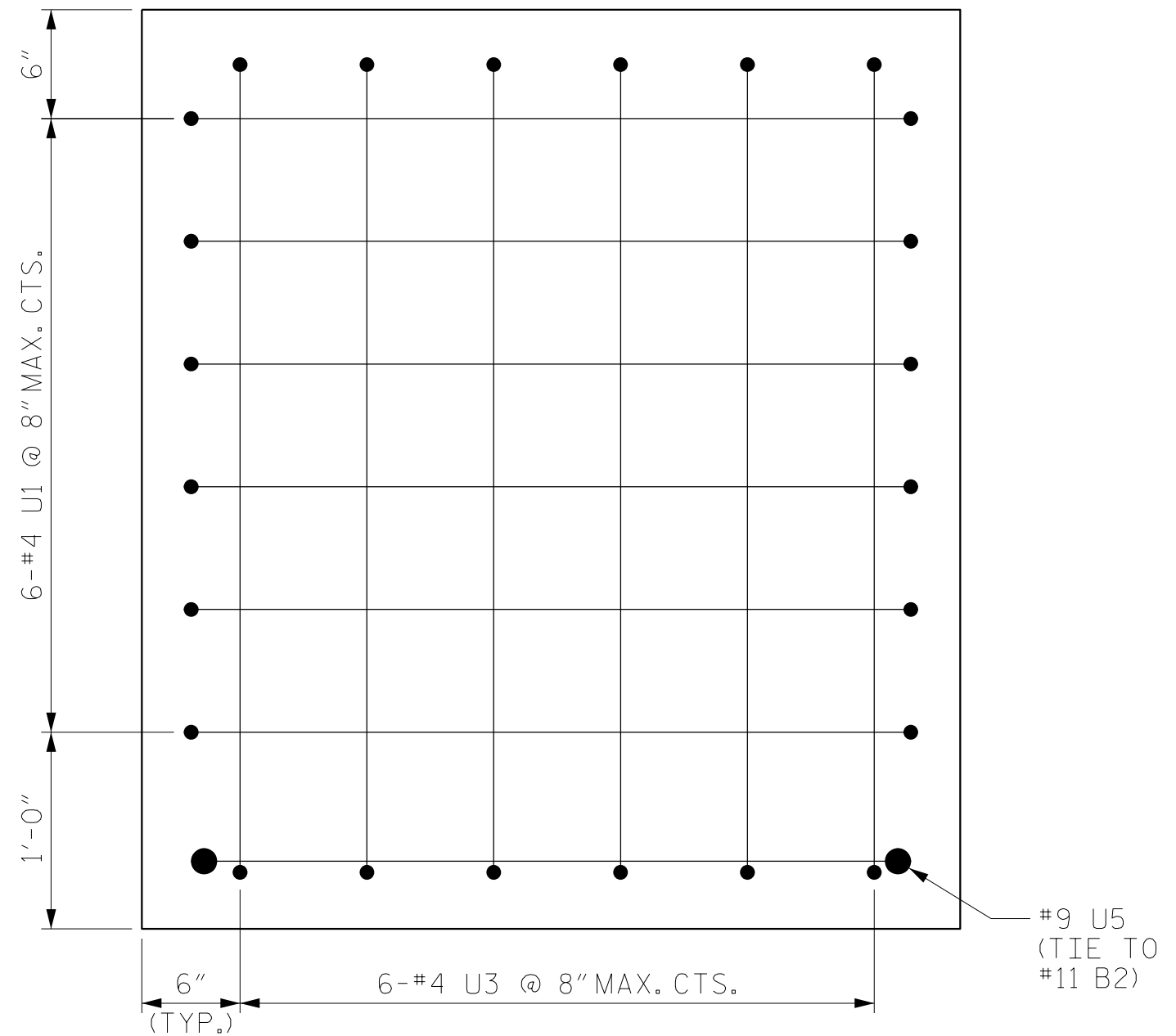
SECTION A-A



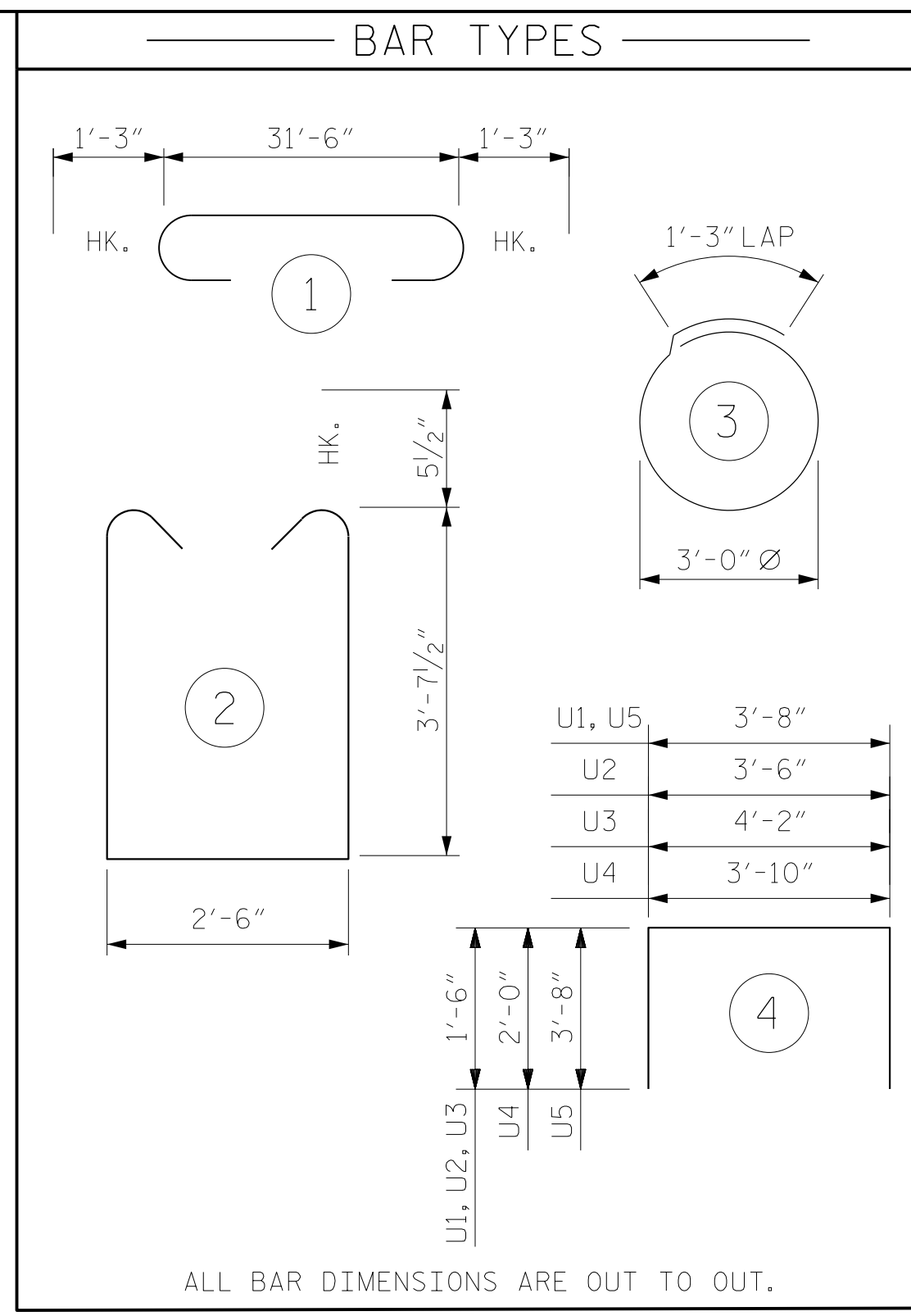
PARTIAL SECTION B-B



VIEW C-C



VIEW D-D



BILL OF MATERIAL						
FOR ONE BENT						
BAR	NO.	SIZE	TYPE	LENGTH	WEIGHT	
B1	6	#9	1	34'-0"	694	
B2	4	#11	STR	31'-6"	669	
B3	8	#5	STR	4'-8"	39	
B4	6	#4	STR	13'-1"	52	
B5	6	#5	STR	31'-6"	197	
B6	5	#4	STR	31'-6"	105	
B7	8	#4	STR	3'-10"	20	
S1	84	#5	2	10'-8"	935	
S2	20	#4	3	10'-8"	143	
U1	11	#5	4	6'-8"	76	
U2	6	#5	4	6'-6"	41	
U3	6	#5	4	7'-2"	45	
U4	31	#4	4	7'-10"	162	
U5	2	#9	4	11'-0"	75	
REINFORCING STEEL (FOR ONE BENT)					3,253 LBS.	
▲ CLASS A CONCRETE (FOR ONE BENT)					20.3 C.Y.	
PP 24 X 0.50 GALVANIZED STEEL PILES						
BENT NO. 1 NO. 5					475 LIN. FT.	
BENT NO. 2 NO. 5					500 LIN. FT.	
BENT NO. 3 NO. 5					475 LIN. FT.	
PIPE PILE PLATES (FOR ONE BENT)					NO. 5	
PILE DRIVING EQUIPMENT SETUP FOR PP 24 X 0.50 GALVANIZED STEEL PILES (FOR ONE BENT)					NO. 5	
PILE REDRIVES (FOR ONE BENT)					NO. 3	
TOP PIPE PILE PLATES (FOR ONE BENT)					NO. 5	

▲ CONCRETE DISPLACED BY THE PP 24 X 0.50 GALVANIZED STEEL PIPE PILES HAS BEEN DEDUCTED FROM THE CONCRETE QUANTITY.

PROJECT NO. B-4484
CRAVEN COUNTY
 STATION: 41+45.00 -L1-

SHEET 2 OF 2 REPLACES BRIDGE NO. 240139



RS&H
 RS&H Architects-Engineers-Planners, Inc.
 8521 Six Forks Road, Suite 400
 919-926-4100 FAX 919-846-9080
 www.rsandh.com
 North Carolina License No. 50737-F-0403-C-08

STATE OF NORTH CAROLINA
 DEPARTMENT OF TRANSPORTATION
 RALEIGH
 SUBSTRUCTURE
 BENTS 1-3
 DETAILS

REVISIONS						SHEET NO.
NO.	BY:	DATE:	NO.	BY:	DATE:	
1			3			S2-24
2			4			TOTAL SHEETS 31

DRAWN BY :	MRA	DATE :	04/2019
CHECKED BY :	JMR	DATE :	05/2019
DESIGN ENGINEER OF RECORD:	PDS	DATE :	06/2019

DOCUMENT NOT CONSIDERED FINAL UNLESS ALL SIGNATURES COMPLETED