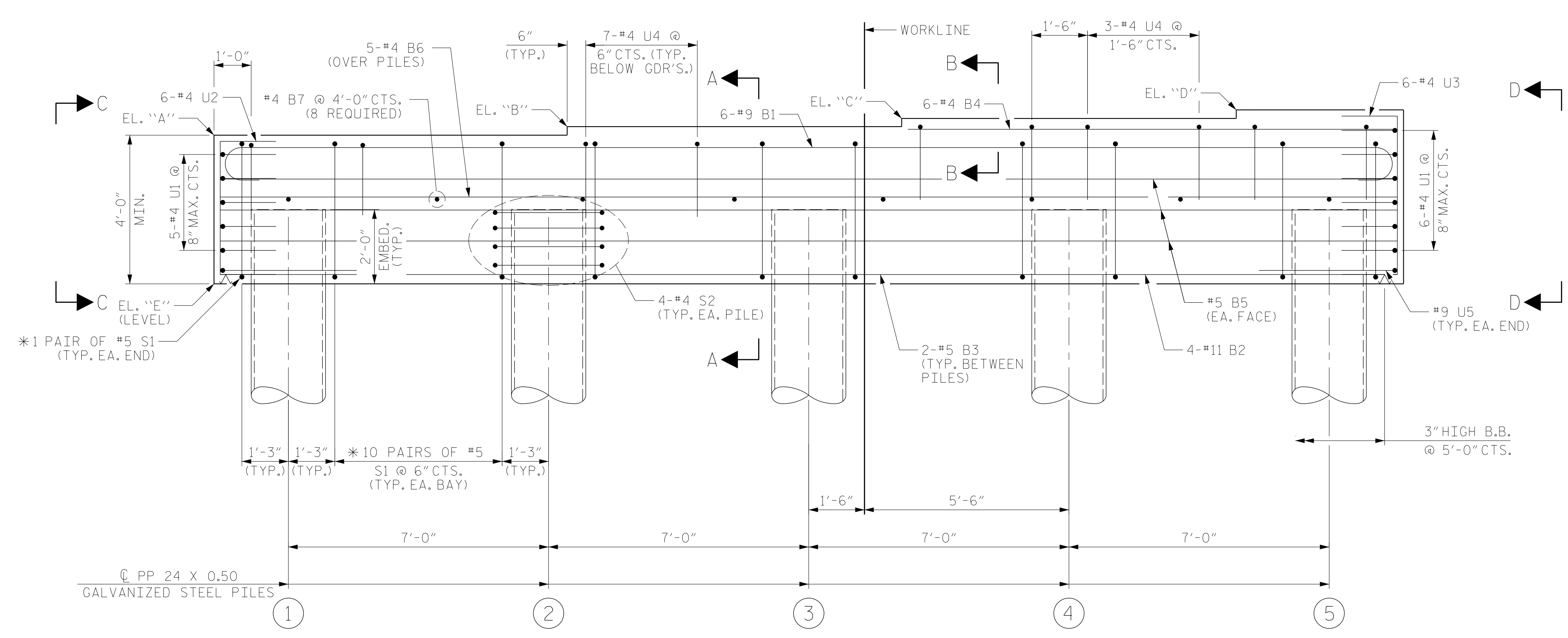


PLAN



ELEVATION

BENT	W.P.	SPANS		ELEVATIONS					
		S1	S2	A	B	C	D	E	TOP OF PILE
1	2	A	B	13.71	13.94	14.16	14.39	9.71	11.71
2	3	B	C	14.63	14.85	15.08	15.30	10.63	12.63
3	4	C	D	14.93	15.15	15.38	15.60	10.93	12.93

NOTES

FOR SECTION A-A, PARTIAL SECTION B-B, VIEW C-C, AND VIEW D-D, SEE SHEET 2 OF 2.

FOR REINFORCING STEEL BILL OF MATERIAL, SEE SHEET 2 OF 2.

FOR ADDITIONAL REINFORCING STEEL AND CONCRETE IN PP 24 X 0.50 GALVANIZED STEEL PILES, SEE "24" STEEL PIPE PILE" SHEET.

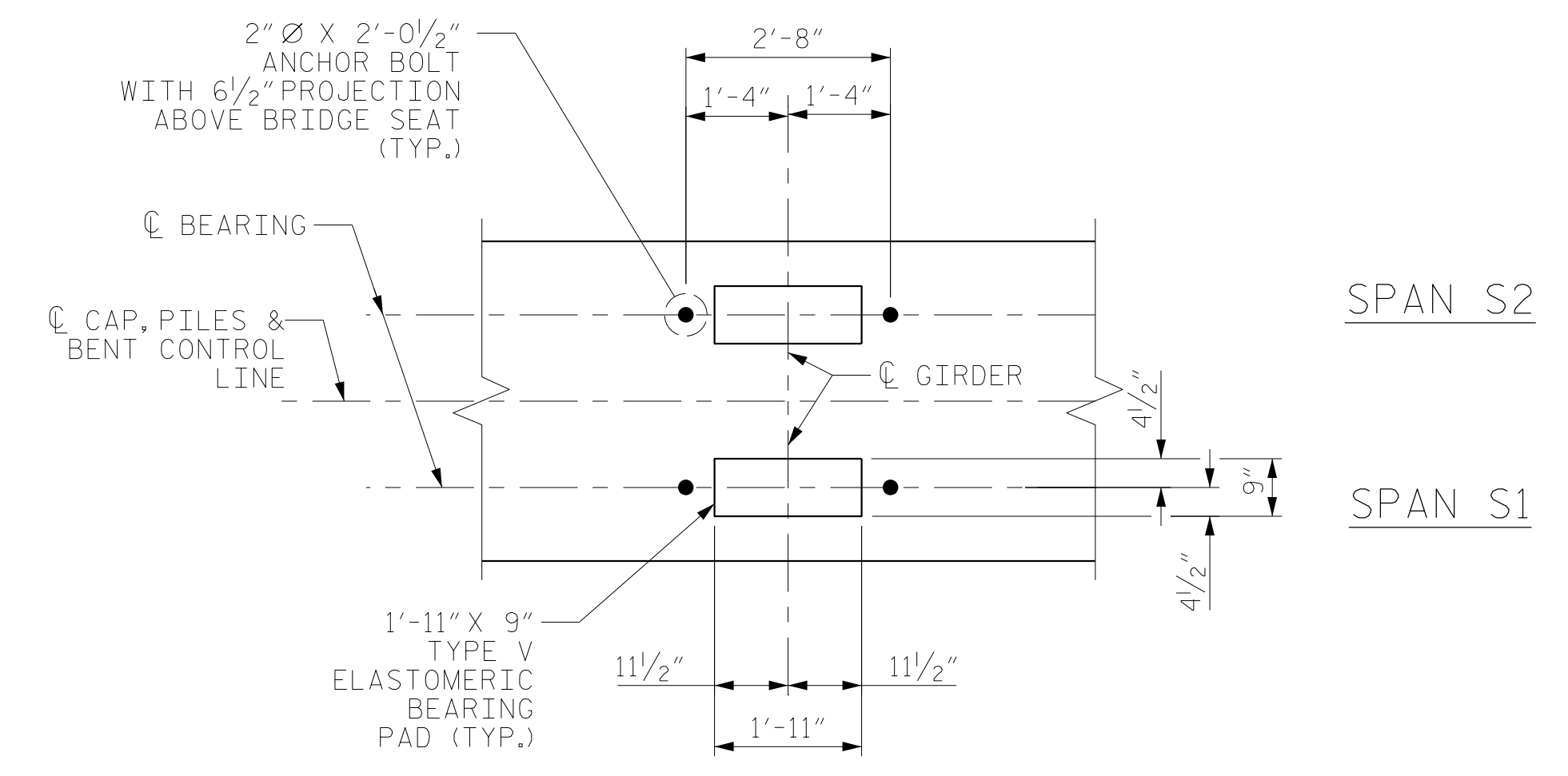
HOOKS ON V1 BARS IN CONCRETE PLUGS MAY BE TURNED AS NECESSARY TO AVOID EMBEDDED ANCHOR BOLTS.

U4 AND S1 BARS MAY BE SHIFTED AS NECESSARY TO CLEAR ANCHOR BOLT.

U2 AND U3 BARS MAY BE ROTATED AS NECESSARY SO THAT LEGS OF BARS CLEAR PIPE PILES.

* INVERT ALTERNATE #5 S1 STIRRUP PAIRS.

GALVANIZE THE TOP OF EACH INTERIOR BENT PILE A MINIMUM OF 45 FEET. GALVANIZE IN ACCORDANCE WITH SECTION 1076 OF THE STANDARD SPECIFICATIONS.



DETAIL "A"

DIMENSIONS TYPICAL FOR EACH BEARING. PILES AND STEP NOT SHOWN FOR CLARITY.

PROJECT NO. B-4484
CRAVEN COUNTY
 STATION: 41+45.00 -L1-

SHEET 1 OF 2 REPLACES BRIDGE NO. 240139



RS&H
 RS&H Architects-Engineers-Planners, Inc.
 8521 Six Forks Road, Suite 400
 919-926-4100 FAX 919-846-9080
 www.rsandh.com
 North Carolina License No. 50737-F-0403-C-28

STATE OF NORTH CAROLINA
 DEPARTMENT OF TRANSPORTATION
 RALEIGH
 SUBSTRUCTURE
 BENTS 1 - 3

DRAWN BY : MRA DATE : 04/2019
 CHECKED BY : JMR DATE : 05/2019
 DESIGN ENGINEER OF RECORD: PDS DATE : 06/2019

DOCUMENT NOT CONSIDERED FINAL UNLESS ALL SIGNATURES COMPLETED

REVISIONS						SHEET NO.
NO.	BY:	DATE:	NO.	BY:	DATE:	
1			3			S2-23
2			4			TOTAL SHEETS 31