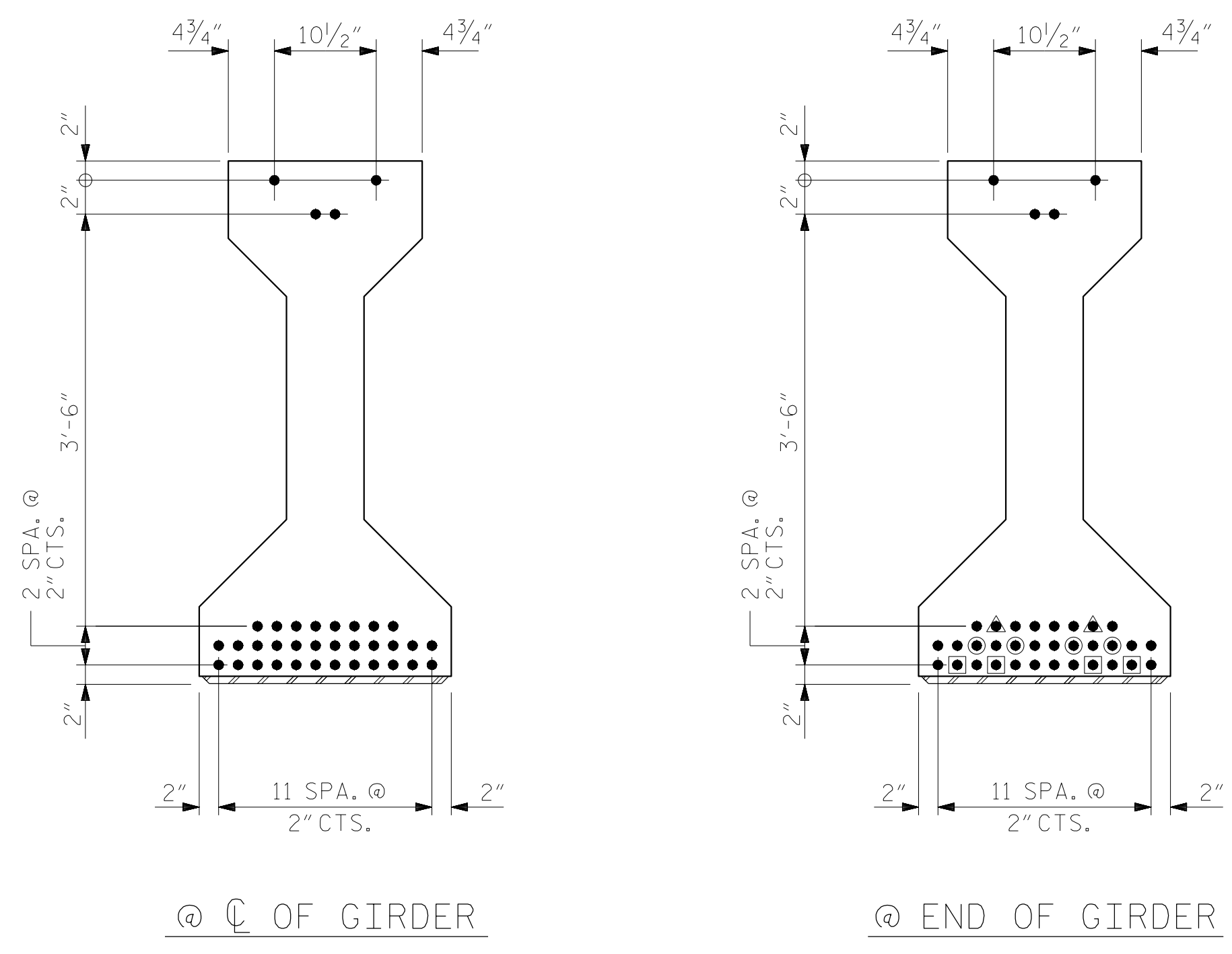


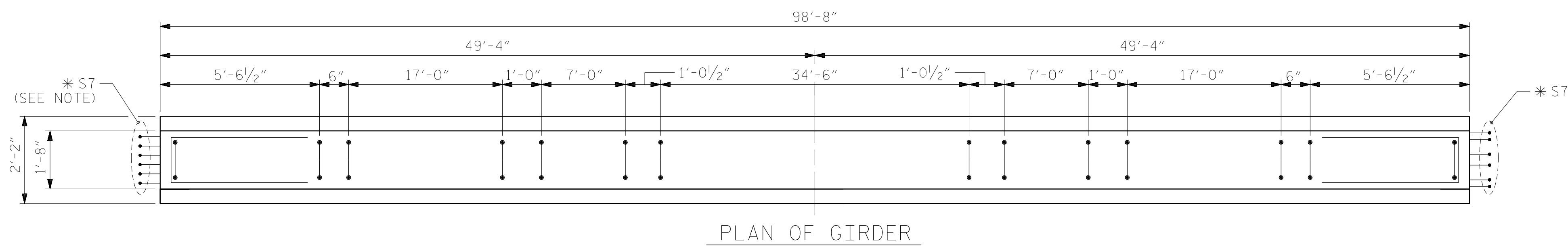
* FOR S7 BARS, SEE
DETAIL "A" OF
PRESTRESSED
CONCRETE GIRDER
CONTINUOUS FOR LIVE
LOAD DETAILS SHEET



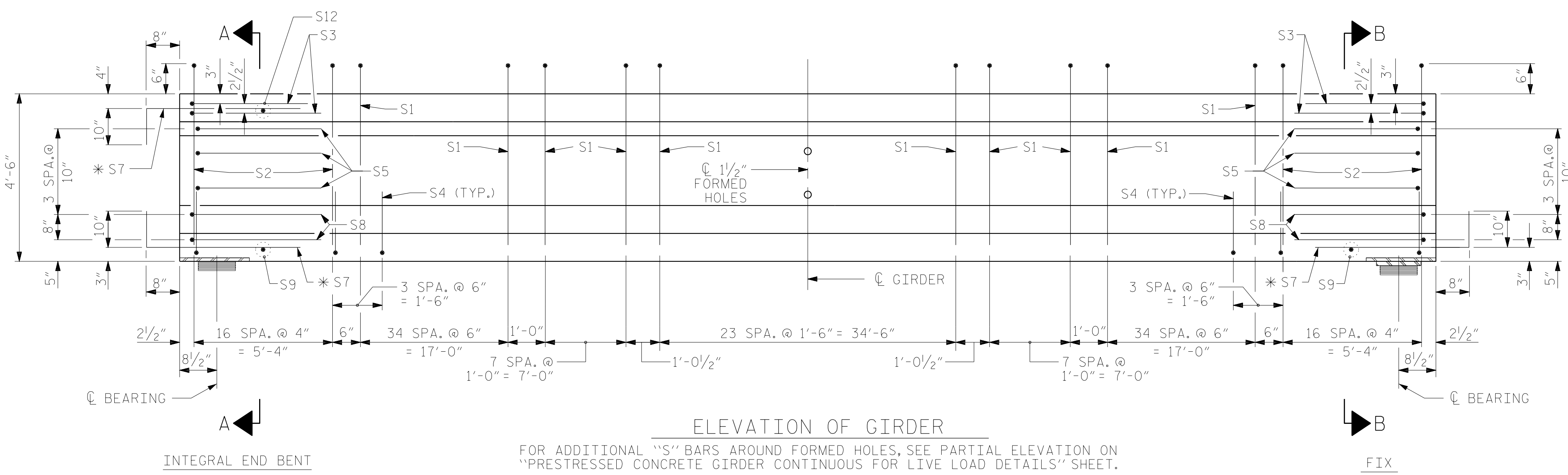
DEBONDING LEGEND

- FULLY BONDED STRANDS
- STRANDS DEBONDED FOR 6'-0" FROM END OF GIRDER
- STRANDS DEBONDED FOR 8'-0" FROM END OF GIRDER
- STRANDS DEBONDED FOR 10'-0" FROM END OF GIRDER

0.6" Ø LOW RELAXATION STRAND LAYOUT



PLAN OF GIRDER
NOTE: S7 BARS IN BOTTOM BULB NOT SHOWN FOR CLARITY



ELEVATION OF GIRDER

FOR ADDITIONAL "S" BARS AROUND FORMED HOLES, SEE PARTIAL ELEVATION ON "PRESTRESSED CONCRETE GIRDER CONTINUOUS FOR LIVE LOAD DETAILS" SHEET.
SPAN A SHOWN, SPAN D SIMILAR

0.6" Ø L. R. GRADE 270 STRANDS

AREA (SQUARE INCHES)	ULTIMATE STRENGTH (LBS. PER STRAND)	APPLIED PRESTRESS (LBS. PER STRAND)
0.217	58,600	43,950

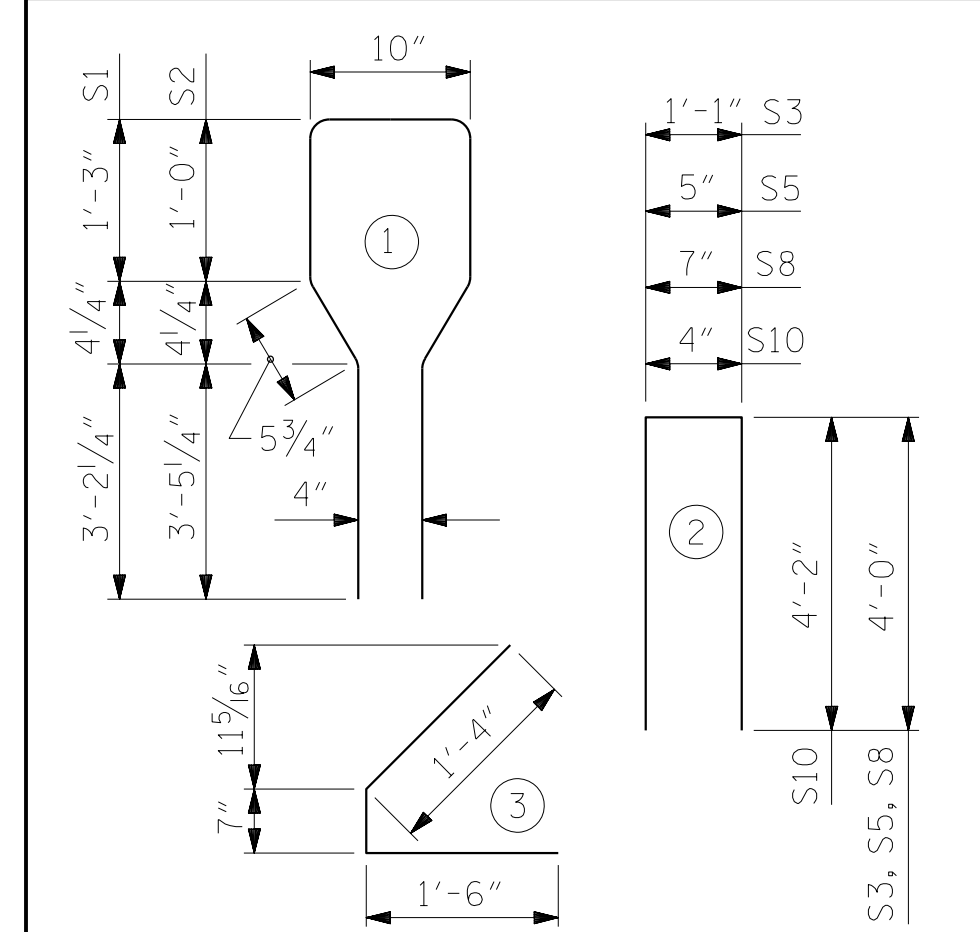
REINFORCING STEEL FOR ONE GIRDER

BAR	NUMBER	SIZE	TYPE	LENGTH	WEIGHT
S1	110	#4	1	10'-8"	784
S2	34	#6	1	10'-8"	545
S3	4	#4	2	9'-1"	24
S4	80	#4	3	3'-5"	183
S5	6	#4	2	8'-5"	34
* S7	18	#5	STR	3'-8"	69
S8	4	#4	2	8'-7"	23
S9	2	#3	STR	1'-10"	1
** S10	2	#5	2	8'-8"	18
** S11	5	#4	STR	7'-0"	23
S12	1	#3	STR	1'-4"	1

* NOTE: S7 BARS SHALL BE BENT BEFORE SHIPMENT. HEAT BENDING SHALL NOT BE ALLOWED.
** FOR PLACEMENT OF S10 AND S11 BARS, SEE "PRESTRESSED CONCRETE GIRDER CONTINUOUS FOR LIVE LOAD DETAILS" SHEET.

BAR TYPES

ALL BAR DIMENSIONS ARE OUT-TO-OUT



QUANTITIES FOR ONE GIRDER

REINFORCING STEEL	8,000 PSI CONCRETE	0.6" Ø L. R. STRANDS
LB.	C.Y.	No.
1,704	20.0	36

GIRDERS REQUIRED

NUMBER	LENGTH	TOTAL LENGTH
8	98'-8"	789'-4"

PROJECT NO. B-4484
CRAVEN COUNTY
STATION: 41+45.00 -L1-

SHEET 1 OF 3 REPLACES BRIDGE NO. 240139



STATE OF NORTH CAROLINA
DEPARTMENT OF TRANSPORTATION
RALEIGH
SUPERSTRUCTURE
AASHTO TYPE IV
PRESTRESSED CONCRETE GIRDER
CONTINUOUS FOR LIVE LOAD
SPANS A & D

REVISIONS						SHEET NO.
NO.	BY:	DATE:	NO.	BY:	DATE:	S2-10
1			3			TOTAL SHEETS
2			4			31

DRAWN BY : NSC DATE : 04/2019
CHECKED BY : JMR DATE : 05/2019
DESIGN ENGINEER OF RECORD: PDS DATE : 06/2019

DOCUMENT NOT CONSIDERED FINAL UNLESS ALL SIGNATURES COMPLETED