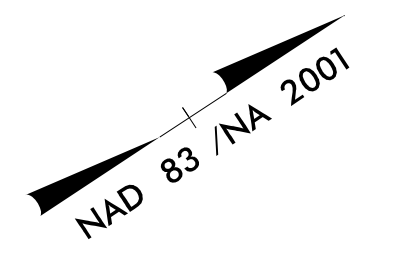
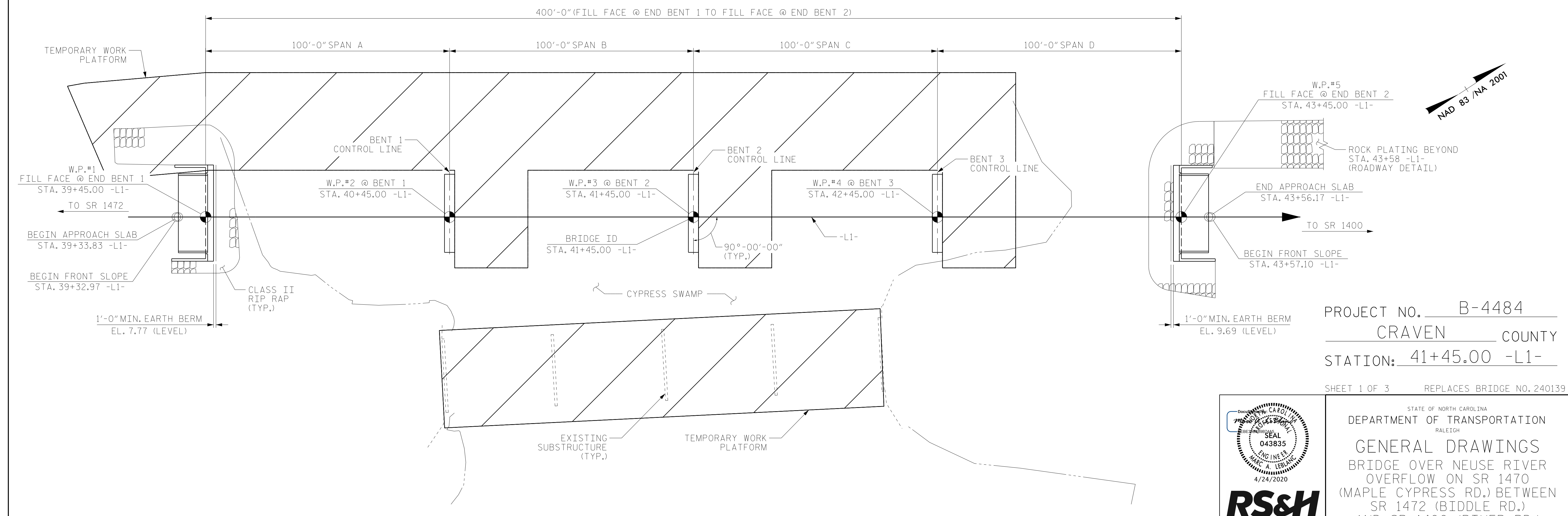


I HEREBY CERTIFY THESE PLANS ARE THE AS-BUILT PLANS



PROJECT NO. B-4484
CRAVEN COUNTY
 STATION: 41+45.00 -L1-

SHEET 1 OF 3 REPLACES BRIDGE NO. 240139

DRAWN BY : NSC DATE : 04/2019
 CHECKED BY : JMR DATE : 05/2019
 DESIGN ENGINEER OF RECORD: PDS DATE : 06/2019

4/24/2020
 X:\P\1030036014.B-4484 Design\Design\Structures\B139\CAD\Final Plans\402.001.B4484.SMU.GD1.S-1.240139.dgn
 CuonyN

PLAN ALONG -L1-
 PILES NOT SHOWN FOR CLARITY

DOCUMENT NOT CONSIDERED FINAL UNLESS ALL SIGNATURES COMPLETED

RS&H
 RS&H Architects-Engineers-Planners, Inc.
 8521 Six Forks Road, Suite 400
 919-926-4100 FAX 919-846-9080
 www.rsandh.com
 North Carolina License No. 5073-F-0403-C-02

STATE OF NORTH CAROLINA DEPARTMENT OF TRANSPORTATION RALEIGH					
GENERAL DRAWINGS BRIDGE OVER NEUSE RIVER OVERFLOW ON SR 1470 (MAPLE CYPRESS RD.) BETWEEN SR 1472 (BIDDLE RD.) AND SR 1400 (RIVER RD.)					
REVISIONS					
NO.	BY:	DATE:	NO.	BY:	DATE:
1			3		
2			4		
SHEET NO.					S2-1
TOTAL SHEETS					31