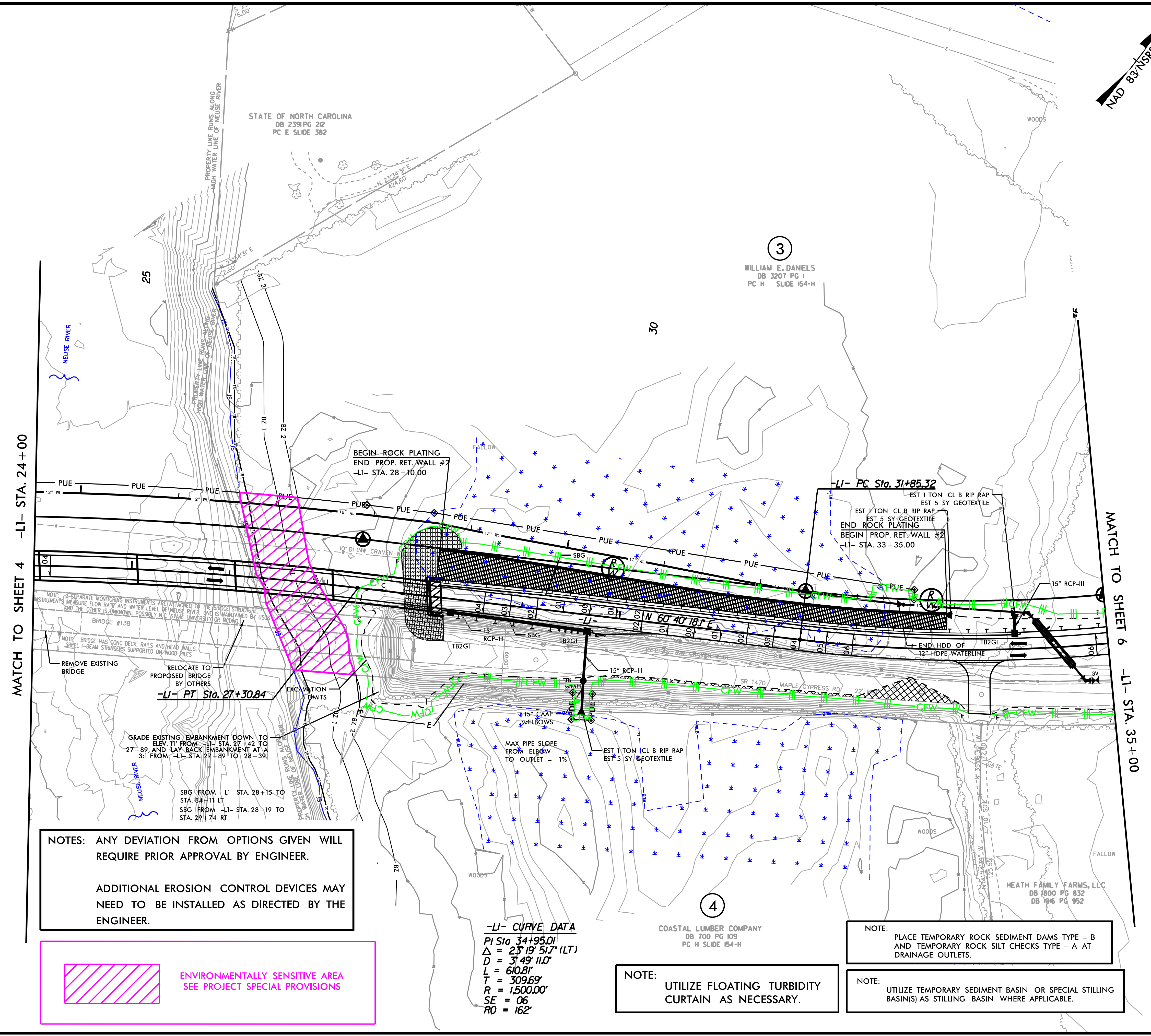


REVISIONS

2/4/2020 R:\Environmental\Design\Plan Sheets\B-4484-EC-5.pah_05.dgn



NOTES: ANY DEVIATION FROM OPTIONS GIVEN WILL REQUIRE PRIOR APPROVAL BY ENGINEER.

ADDITIONAL EROSION CONTROL DEVICES MAY NEED TO BE INSTALLED AS DIRECTED BY THE ENGINEER.

ENVIRONMENTALLY SENSITIVE AREA
 SEE PROJECT SPECIAL PROVISIONS

-LI- CURVE DATA
 PI Sta 34+95.01
 $\Delta = 23^{\circ}19'51.7"$ (LT)
 D = 3149' 11.0"
 L = 610.81'
 T = 309.69'
 R = 1,500.00'
 SE = 06
 RO = 162'

NOTE: UTILIZE FLOATING TURBIDITY CURTAIN AS NECESSARY.

NOTE: PLACE TEMPORARY ROCK SEDIMENT DAMS TYPE - B AND TEMPORARY ROCK SILT CHECKS TYPE - A AT DRAINAGE OUTLETS.

NOTE: UTILIZE TEMPORARY SEDIMENT BASIN OR SPECIAL STILLING BASIN(S) AS STILLING BASIN WHERE APPLICABLE.

CLEARING AND GRUBBING EROSION CONTROL FOR CONSTRUCTION SHEET 5

NOTE: SEPARATE MONITORING INSTRUMENTS ARE ATTACHED TO THE BRIDGE STRUCTURE TO MEASURE FLOW RATE AND WATER LEVEL OF MILISE RIVER. ONE IS MAINTAINED BY USGS AND THE OTHER IS UNKNOWN, POSSIBLY N.C. STATE UNIVERSITY OR INCONO.

NOTE: BRIDGE HAS CONC DECK, RAILS AND HEAD WALLS. STEEL I-BEAM STRINGERS SUPPORTED ON WOOD PILES.

REMOVE EXISTING BRIDGE

RELOCATE TO PROPOSED BRIDGE BY OTHERS

-LI- PT Sta. 27+30.84

GRADE EXISTING EMBANKMENT DOWN TO ELEV. 71' FROM -LI- STA. 27+42 TO 27+89, AND LAY BACK EMBANKMENT AT A 3:1 FROM -LI- STA. 27+89 TO 28+39.

SBG FROM -LI- STA. 28+15 TO STA. 34+11 LT
 SBG FROM -LI- STA. 28+19 TO STA. 29+74 RT

BEGIN ROCK PLATING
 END PROP. RET. WALL #2
 -LI- STA. 28+10.00

-LI- PC Sta. 31+85.32

EST 1 TON CL B RIP RAP
 EST 5 SY GEOTEXTILE

EST 7 TON CL B RIP RAP
 EST 5 SY GEOTEXTILE

END ROCK PLATING
 BEGIN PROP. RET. WALL #2
 -LI- STA. 33+35.00

HEATH FAMILY FARMS, LLC
 DB 8800 PG 832
 DB 1916 PG 952

COASTAL LUMBER COMPANY
 DB 700 PG 109
 PC H SLIDE 154-H

3
 WILLIAM E. DANIELS
 DB 3207 PG 1
 PC H SLIDE 154-H