

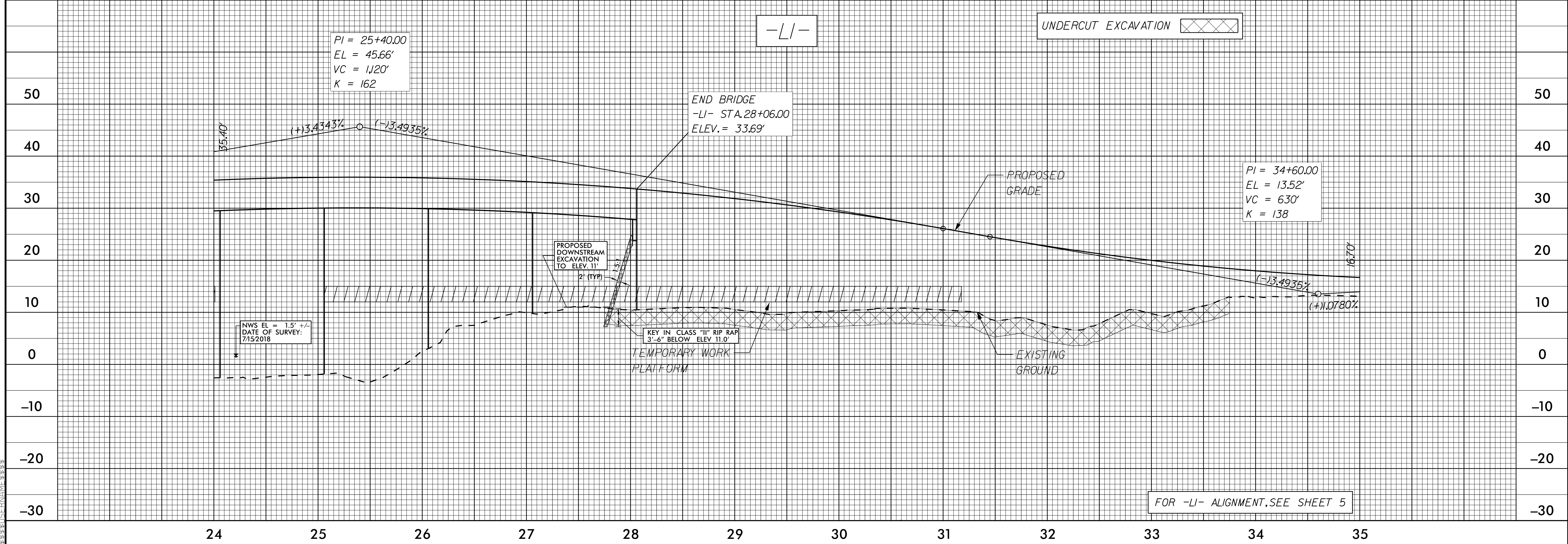
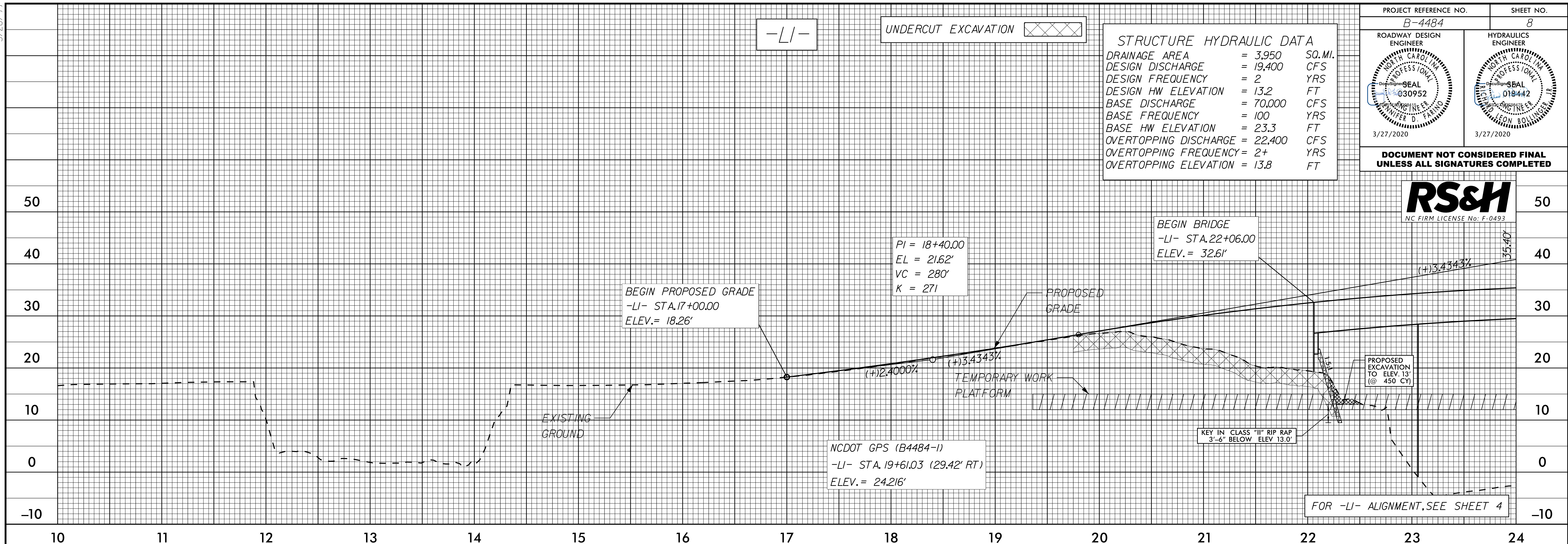
5/28/19

PROJECT REFERENCE NO. B-4484	SHEET NO. 8
ROADWAY DESIGN ENGINEER WINNER D. FRANK 030952 3/27/2020	HYDRAULICS ENGINEER LEON BOLLINGER 018442 3/27/2020

**STRUCTURE HYDRAULIC DATA**

DRAINAGE AREA	= 3,950	SQ. MI.
DESIGN DISCHARGE	= 19,400	CFS
DESIGN FREQUENCY	= 2	YRS
DESIGN HW ELEVATION	= 13.2	FT
BASE DISCHARGE	= 70,000	CFS
BASE FREQUENCY	= 100	YRS
BASE HW ELEVATION	= 23.3	FT
OVERTOPPING DISCHARGE	= 22,400	CFS
OVERTOPPING FREQUENCY	= 2+	YRS
OVERTOPPING ELEVATION	= 13.8	FT

DOCUMENT NOT CONSIDERED FINAL UNLESS ALL SIGNATURES COMPLETED



19-MAR-2020 06:17  
R:\Projects\B4484\Drawings\Profile\1\_08.dgn  
\$\$\$\$\$ (SHEET) \$\$\$\$\$