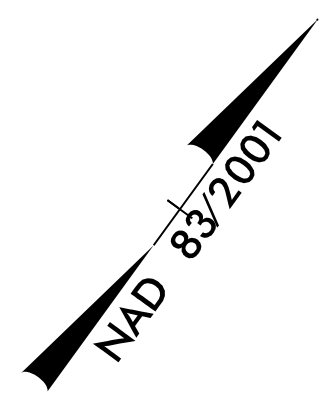
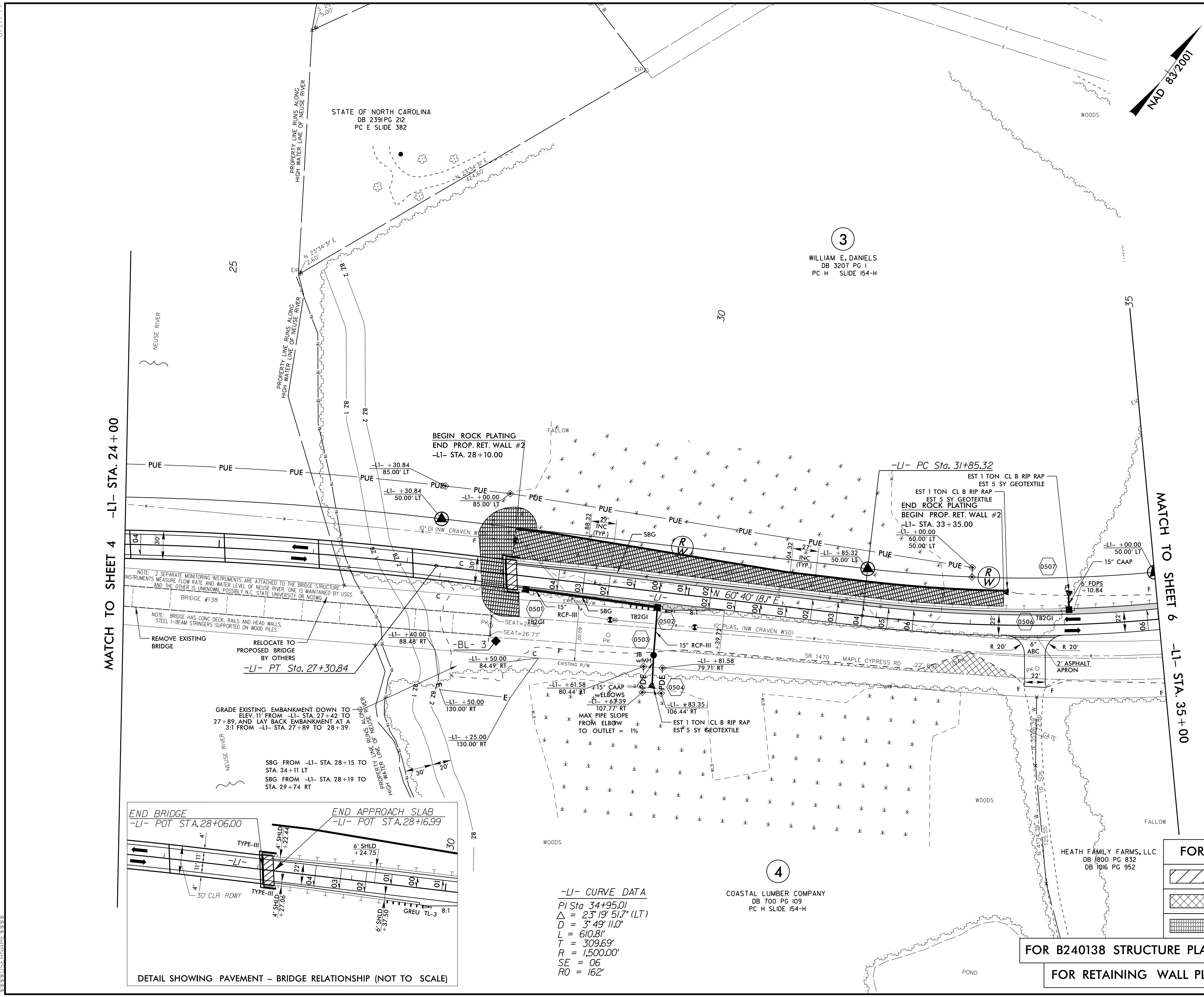


PROJECT REFERENCE NO. B-4484	SHEET NO. 5
RW SHEET NO.	
ROADWAY DESIGN ENGINEER SEAL 030952 D. FARRINGHAM	HYDRAULICS ENGINEER SEAL 018442 LEON BOXLINER
3/27/2020	3/27/2020
DOCUMENT NOT CONSIDERED FINAL UNLESS ALL SIGNATURES COMPLETED	

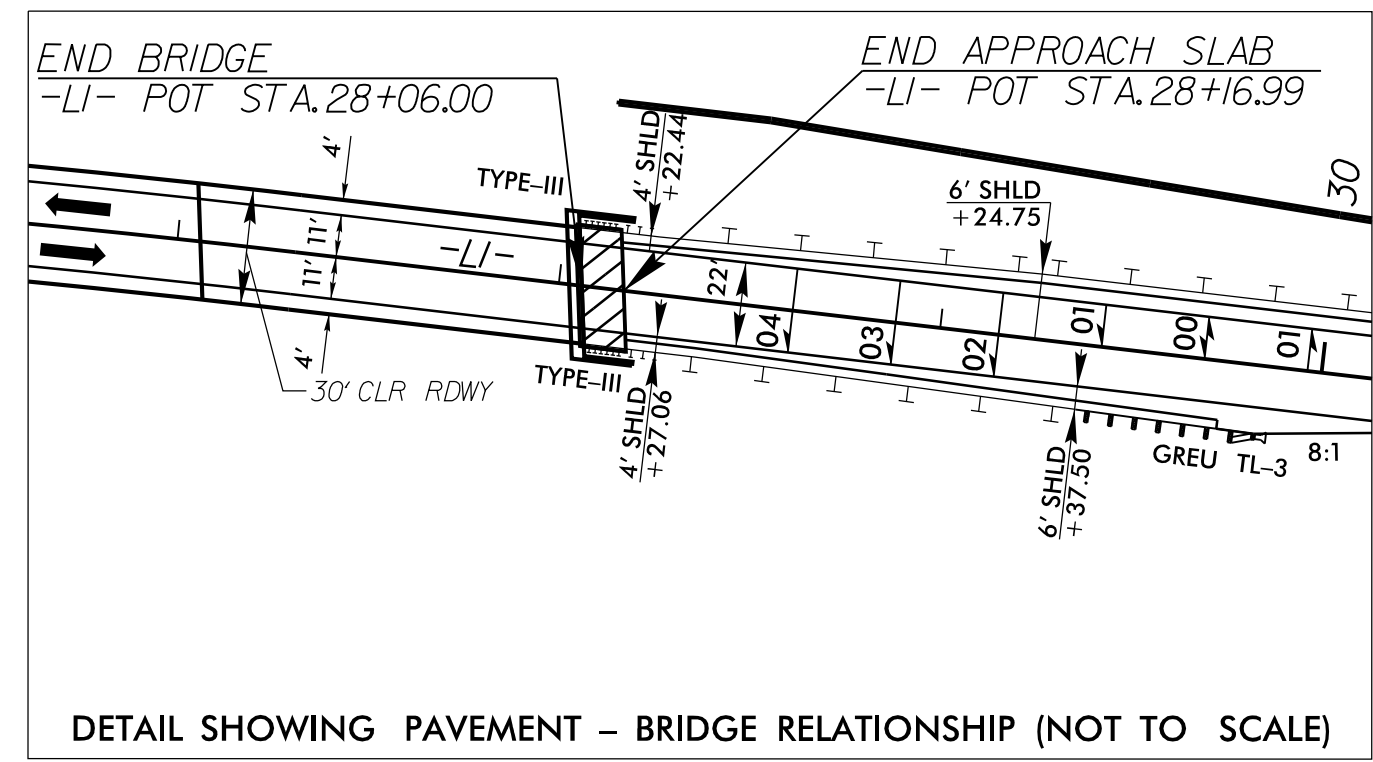


3
WILLIAM E. DANIELS
DB 3207 PG 1
PC H SLIDE 154-H

4
COASTAL LUMBER COMPANY
DB 700 PG 109
PC H SLIDE 154-H

MATCH TO SHEET 4 -LI- STA. 24+00

MATCH TO SHEET 6 -LI- STA. 35+00



-LI- CURVE DATA
PI Sta 34+95.01
 $\Delta = 23^{\circ}19'51.7''$ (LT)
D = 3' 49' 11.0"
L = 610.81'
T = 309.69'
R = 1,500.00'
SE = 06
RO = 162'

FOR -LI- PROFILE, SEE SHEET NO. 8

	BRIDGE APPROACH SLAB
	PAVEMENT REMOVAL
	ROCK PLATING

FOR B240138 STRUCTURE PLANS, SEE SHEETS S1-1 THRU S1-37

FOR RETAINING WALL PLANS, SEE SHEETS W-1 THRU W-5

8.17/99
 05-MAR-2020 07:55
 RS-Roadway\04484-Rdw_psh_05.dgn
 \$\$\$\$\$\$DISPERNAME\$\$\$\$\$\$