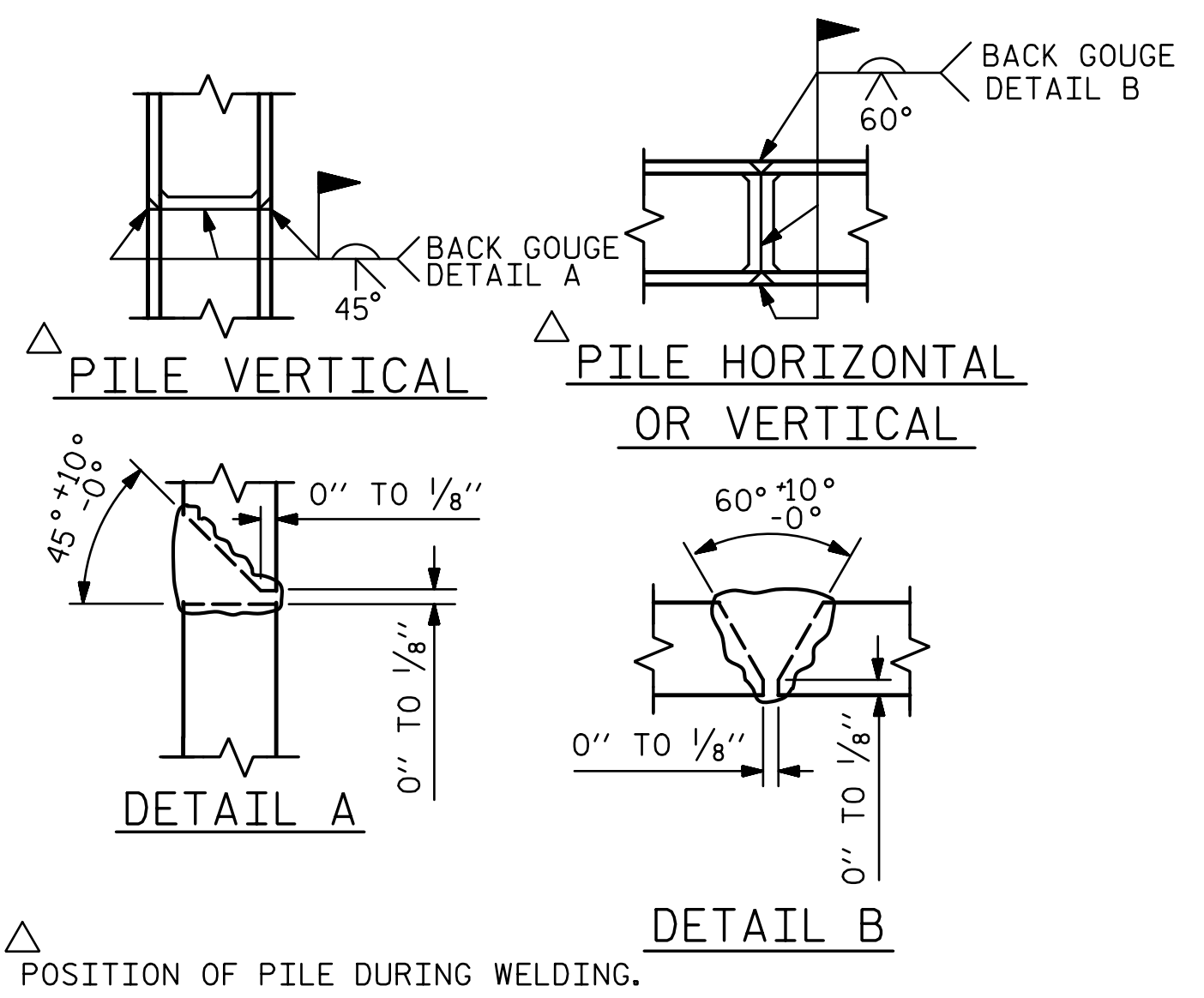


BAGGED STONE AND PIPE SHALL BE PLACED IMMEDIATELY AFTER COMPLETION OF END BENT EXCAVATION. PIPE MAY BE EITHER CONCRETE, CORRUGATED STEEL, CORRUGATED ALUMINUM ALLOY, OR CORRUGATED PLASTIC. PERFORATED PIPE WILL NOT BE ALLOWED.

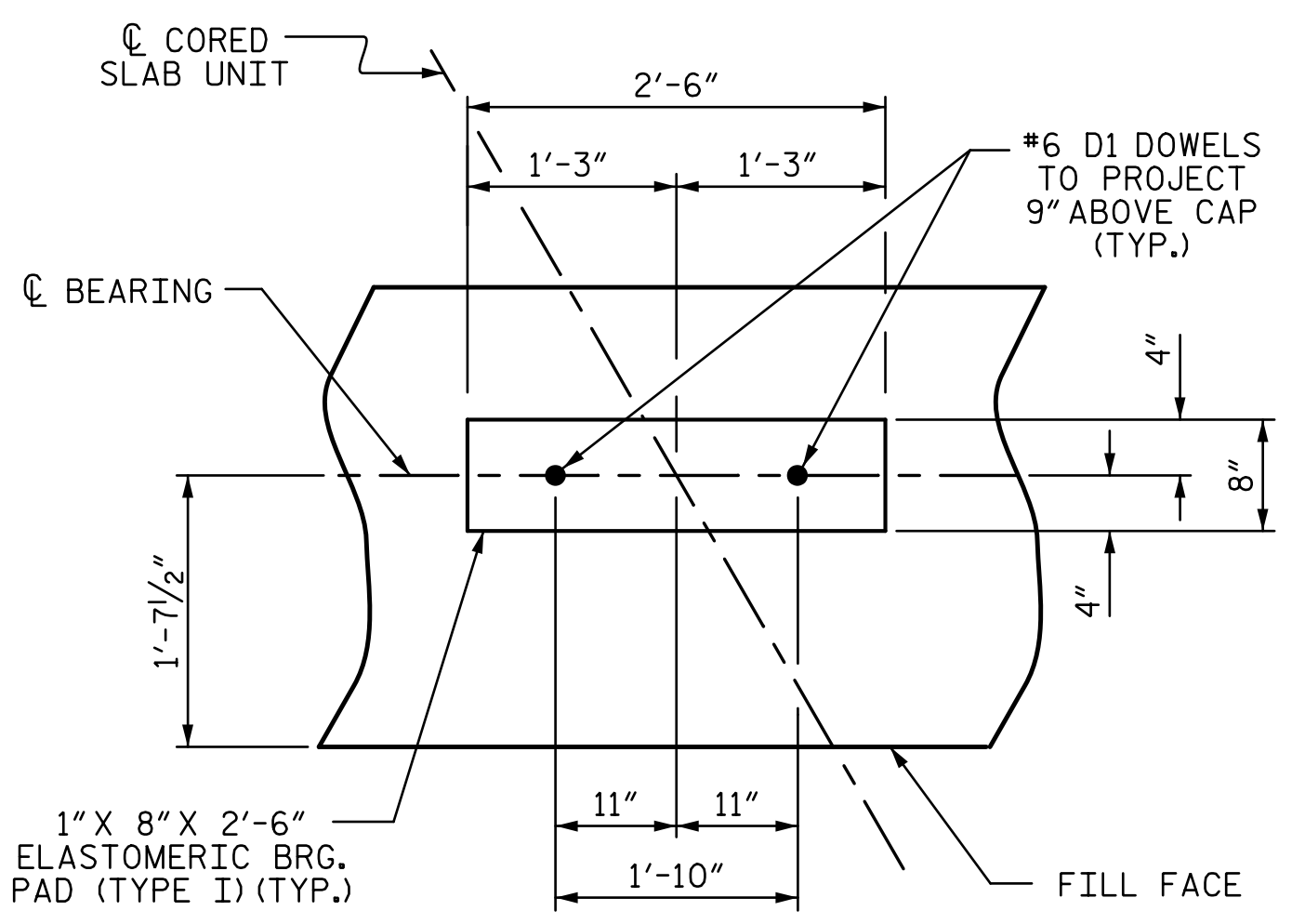
BAGGED STONE SHALL REMAIN IN PLACE UNTIL THE ENGINEER DIRECTS THAT IT BE REMOVED. THE CONTRACTOR SHALL REMOVE AND DISPOSE OF SILT ACCUMULATIONS AT BAGGED STONE WHEN SO DIRECTED BY THE ENGINEER. BAGS SHALL BE REMOVED AND REPLACED WHENEVER THE ENGINEER DETERMINES THAT THEY HAVE DETERIORATED AND LOST THEIR EFFECTIVENESS.

NO SEPARATE PAYMENT WILL BE MADE FOR THIS WORK AND THE ENTIRE COST OF THIS WORK SHALL BE INCLUDED IN THE UNIT CONTRACT PRICE BID FOR THE SEVERAL PAY ITEMS.

TEMPORARY DRAINAGE AT END BENT

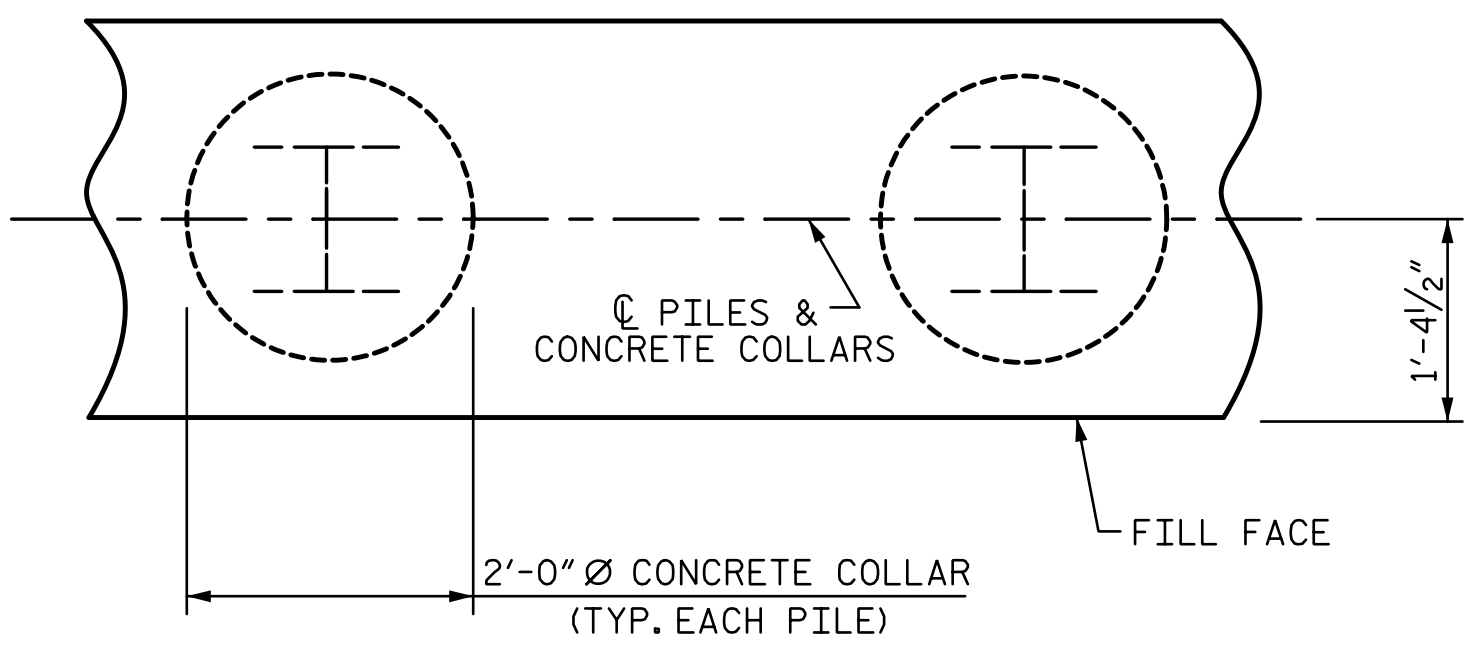


PILE SPLICE DETAILS

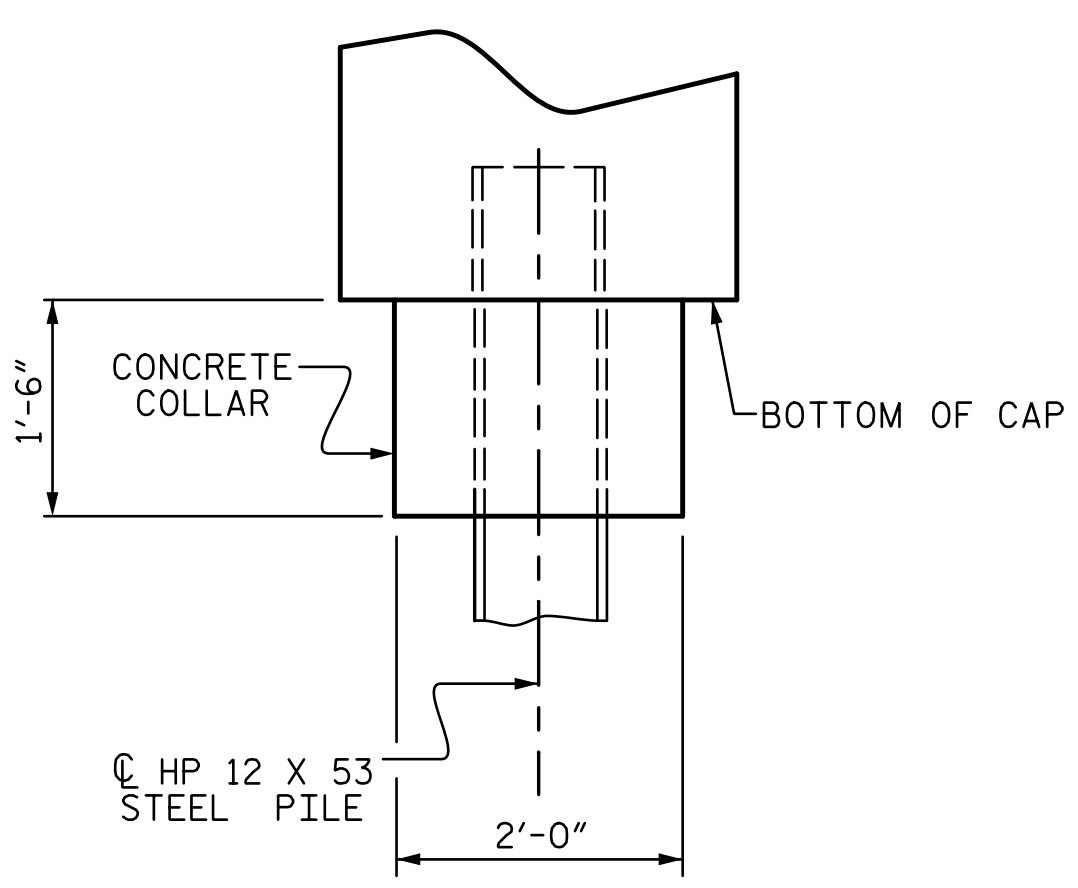


DETAIL "A"

(END BENT No. 1 SHOWN, END BENT No. 2 SIMILAR BY ROTATION)



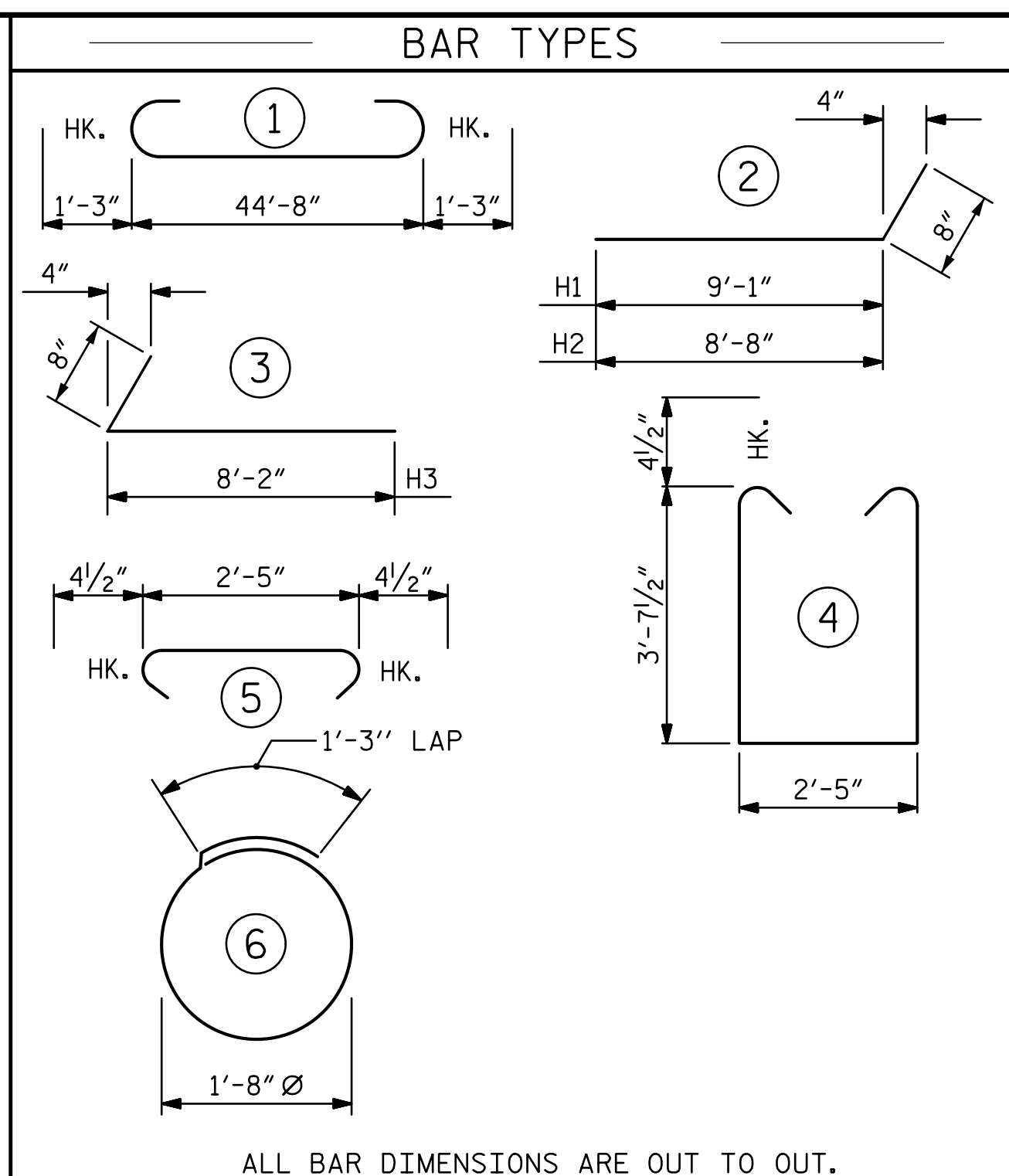
PLAN



ELEVATION

CORROSION PROTECTION FOR STEEL PILES DETAIL

(END BENT No. 1 SHOWN, END BENT No. 2 SIMILAR BY ROTATION)

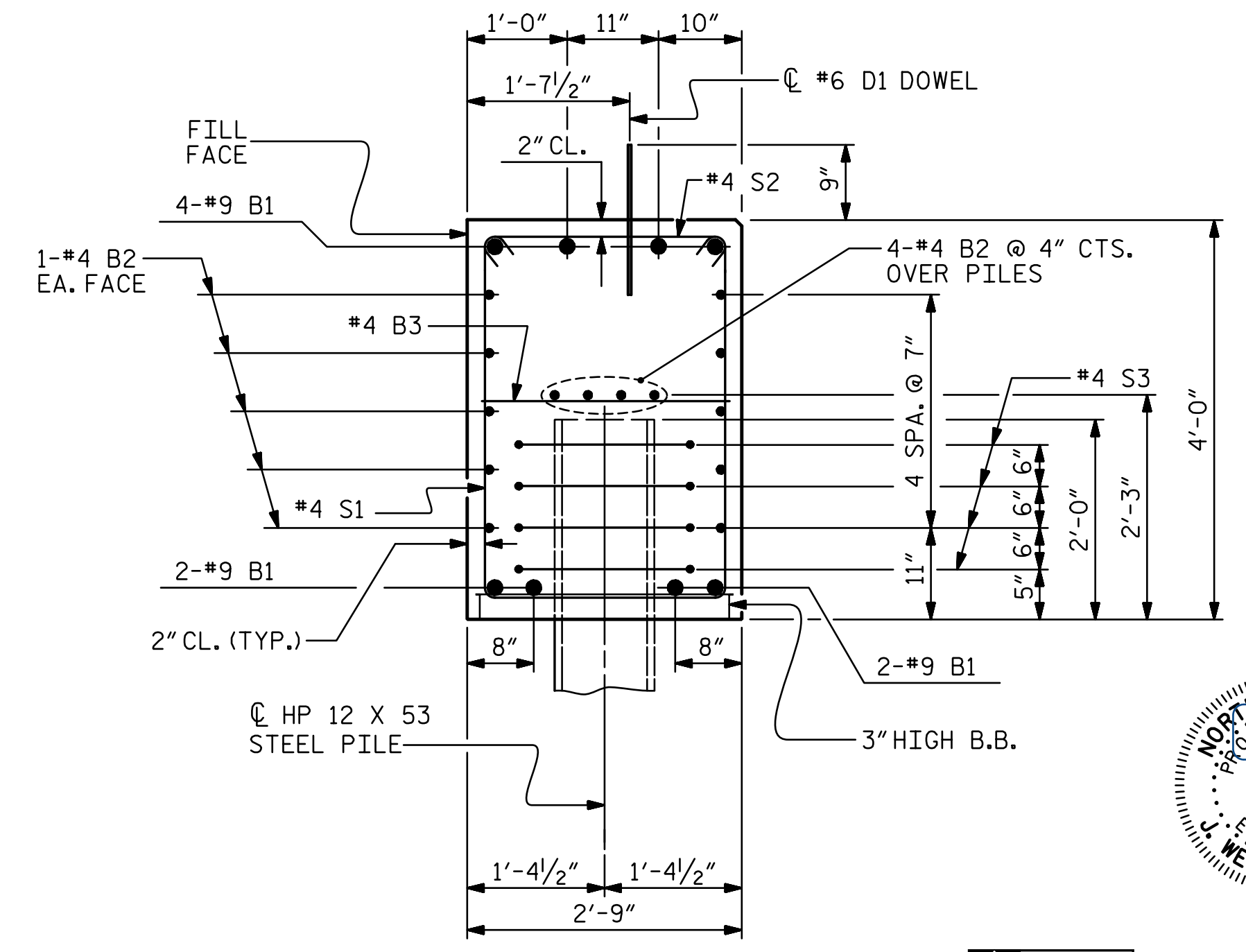


ALL BAR DIMENSIONS ARE OUT TO OUT.

END BENT No. 1		END BENT No. 2	
HP 12 X 53 STEEL PILES	NO: 7	HP 12 X 53 STEEL PILES	NO: 7
LIN. FT.= 210		LIN. FT.= 210	
PILE DRIVING EQUIPMENT SETUP FOR HP 12 X 53 STEEL PILES	NO: 7	PILE DRIVING EQUIPMENT SETUP FOR HP 12 X 53 STEEL PILES	NO: 7
STEEL PILE POINTS	EA.: 0	STEEL PILE POINTS	EA.: 7

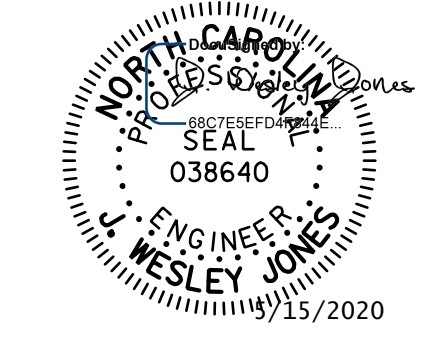
BILL OF MATERIAL

FOR ONE END BENT					
BAR	NO.	SIZE	TYPE	LENGTH	WEIGHT
B1	8	#9	1	47'-2"	1283
B2	28	#4	STR	23'-8"	443
B3	12	#4	STR	2'-5"	19
D1	22	#6	STR	1'-6"	50
H1	10	#4	2	9'-9"	65
H2	10	#4	2	9'-4"	62
H3	20	#4	3	8'-10"	118
K1	16	#4	STR	3'-3"	35
S1	56	#4	4	10'-5"	390
S2	56	#4	5	3'-2"	118
S3	28	#4	6	6'-6"	122
V1	53	#4	STR	6'-2"	218
REINFORCING STEEL (FOR ONE END BENT)					2923 LBS.
CLASS A CONCRETE BREAKDOWN (FOR END BENT No. 1)					
POUR #1	CAP, LOWER PART OF WINGS & COLLARS				21.9 C.Y.
POUR #2	UPPER PART OF WINGS				2.2 C.Y.
CLASS A CONCRETE BREAKDOWN (FOR END BENT No. 2)					
POUR #1	CAP, LOWER PART OF WINGS & COLLARS				21.9 C.Y.
POUR #2	UPPER PART OF WINGS				2.4 C.Y.
TOTAL CLASS A CONCRETE					24.1 C.Y.
TOTAL CLASS A CONCRETE					24.3 C.Y.



SECTION A-A

(CONCRETE COLLAR NOT SHOWN FOR CLARITY. SEE "CORROSION PROTECTION FOR STEEL PILES DETAIL.")



STV ENGINEERS, INC.
900 West Trade St., Suite 715
Charlotte, NC 28202
NC License Number F-0991

DOCUMENT NOT CONSIDERED FINAL UNLESS ALL SIGNATURES COMPLETED

PROJECT NO. BR-0125
WILKES COUNTY
STATION: 15+36.00 -L-

SHEET 4 OF 4
STATE OF NORTH CAROLINA
DEPARTMENT OF TRANSPORTATION
RALEIGH
SUBSTRUCTURE
END BENT No. 1 & 2
DETAILS

REVISIONS				SHEET NO.	
NO.	BY:	DATE:	NO.	BY:	DATE:
1			3		
2			4		

TOTAL SHEETS 23

R:\Structures\ustation\Finals\40L_033_BR-0125_SML_E4_017_950663.dgn 5/4/2020 3:12:22 PM Jones

DRAWN BY : WAW	DATE : 10-19
CHECKED BY : JWJ	DATE : 02-20
DESIGN ENGINEER OF RECORD : JWJ	DATE : 04-20
DRAWN BY : WJH 12/11	REV. 4/17
CHECKED BY : AAC 12/11	MAA/THC