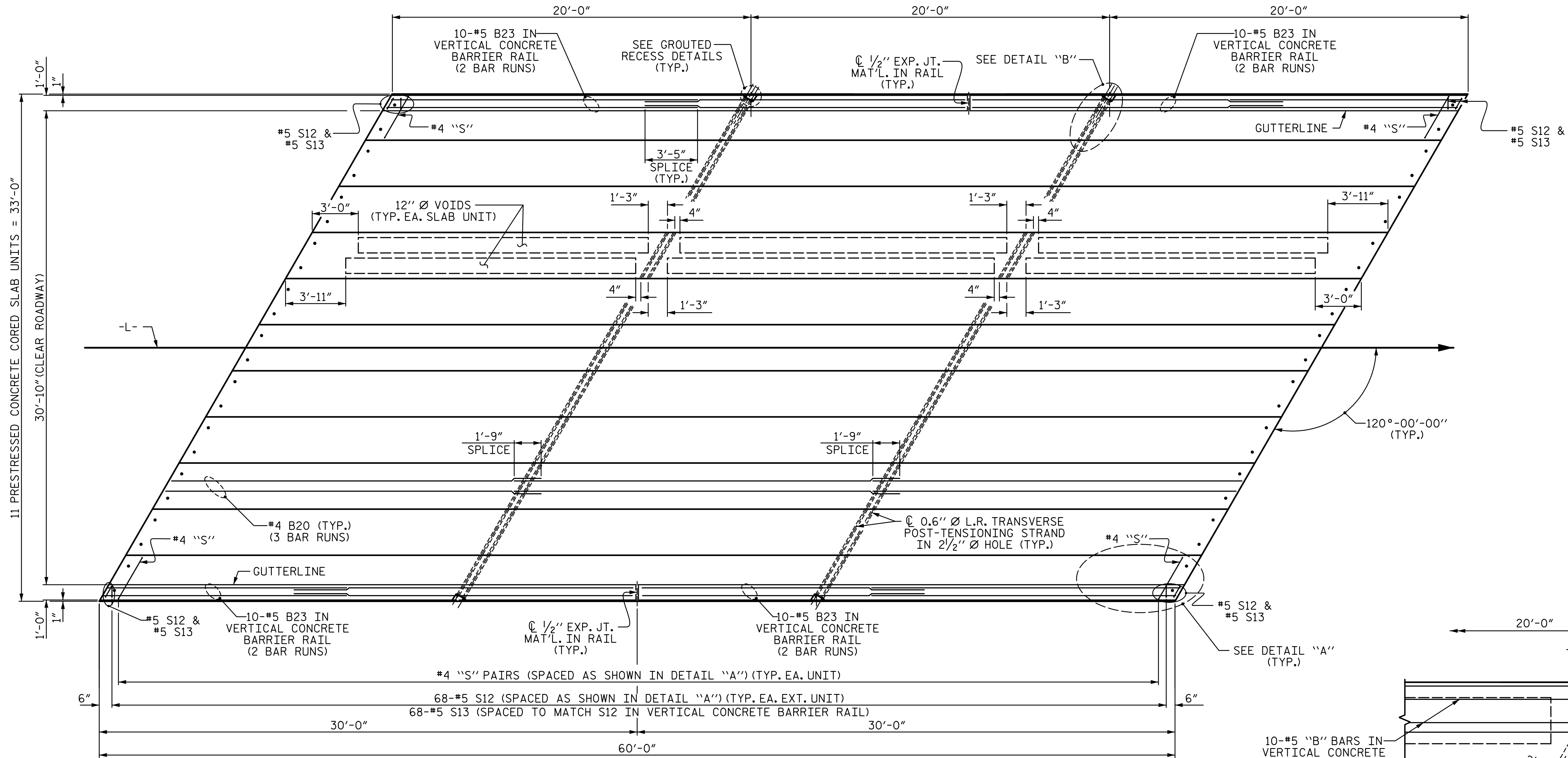
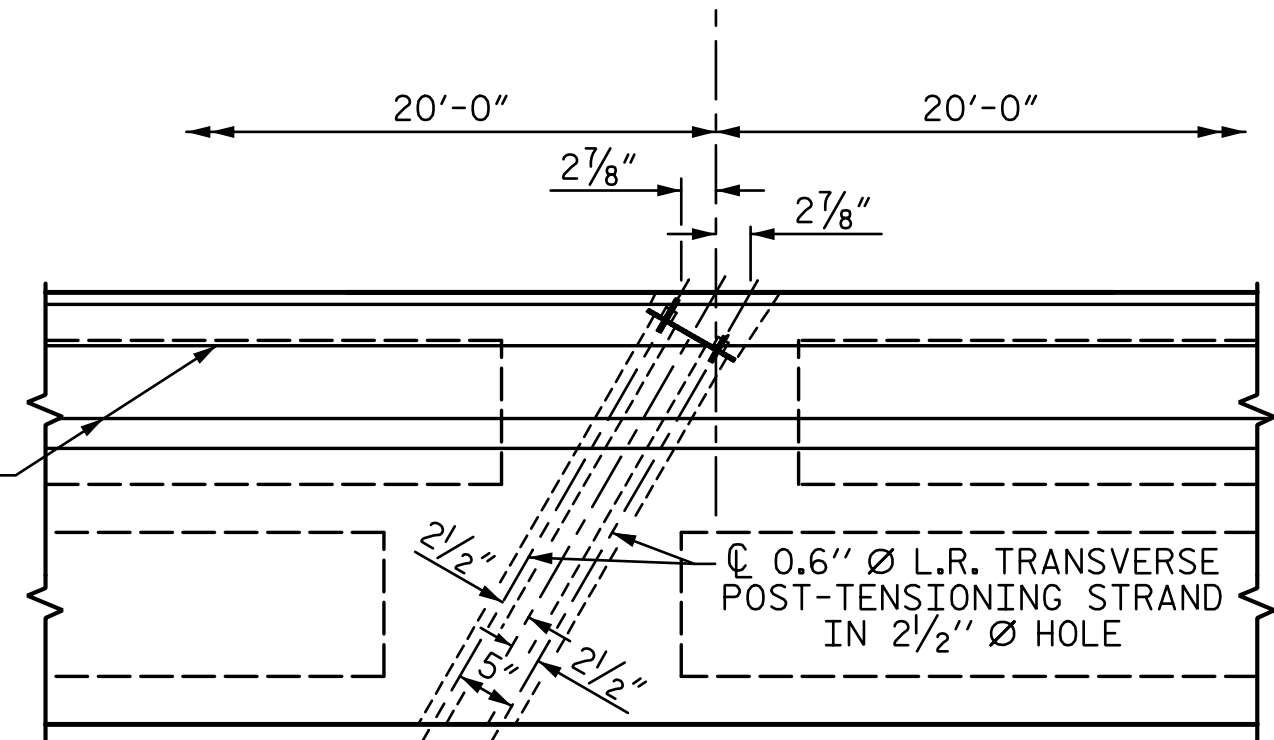


R:\Structures\ustation\Finals\401_021_BR-0125_SMU_CS6_OIL_960663.dgn 3:12:11 PM 5/4/2020 Jones



PLAN OF UNIT



DETAIL "B"

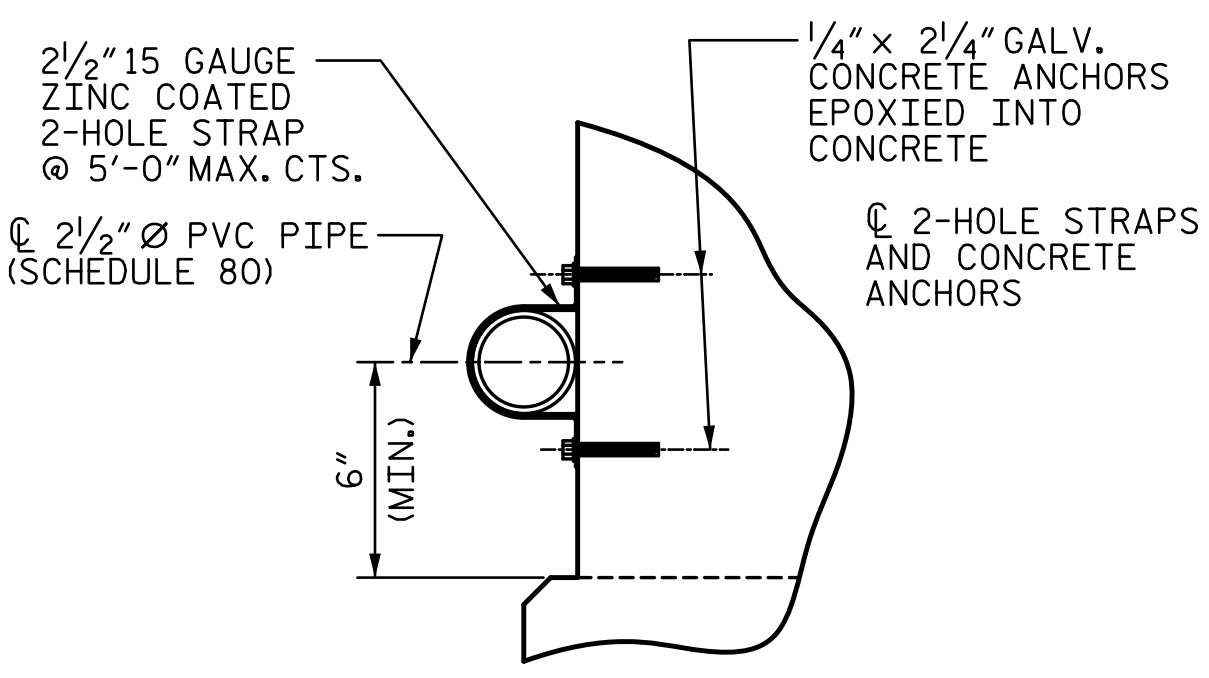
#4 S11 BARS MAY BE SHIFTED AS NECESSARY TO MAINTAIN 1" CLEAR TO GROUDED RECESS AND 2 1/2" Ø TRANSVERSE POST-TENSIONING STRAND HOLES

PROJECT NO. **BR-0125**
WILKES COUNTY
 STATION: **15+36.00 -L-**
 SHEET 3 OF 4

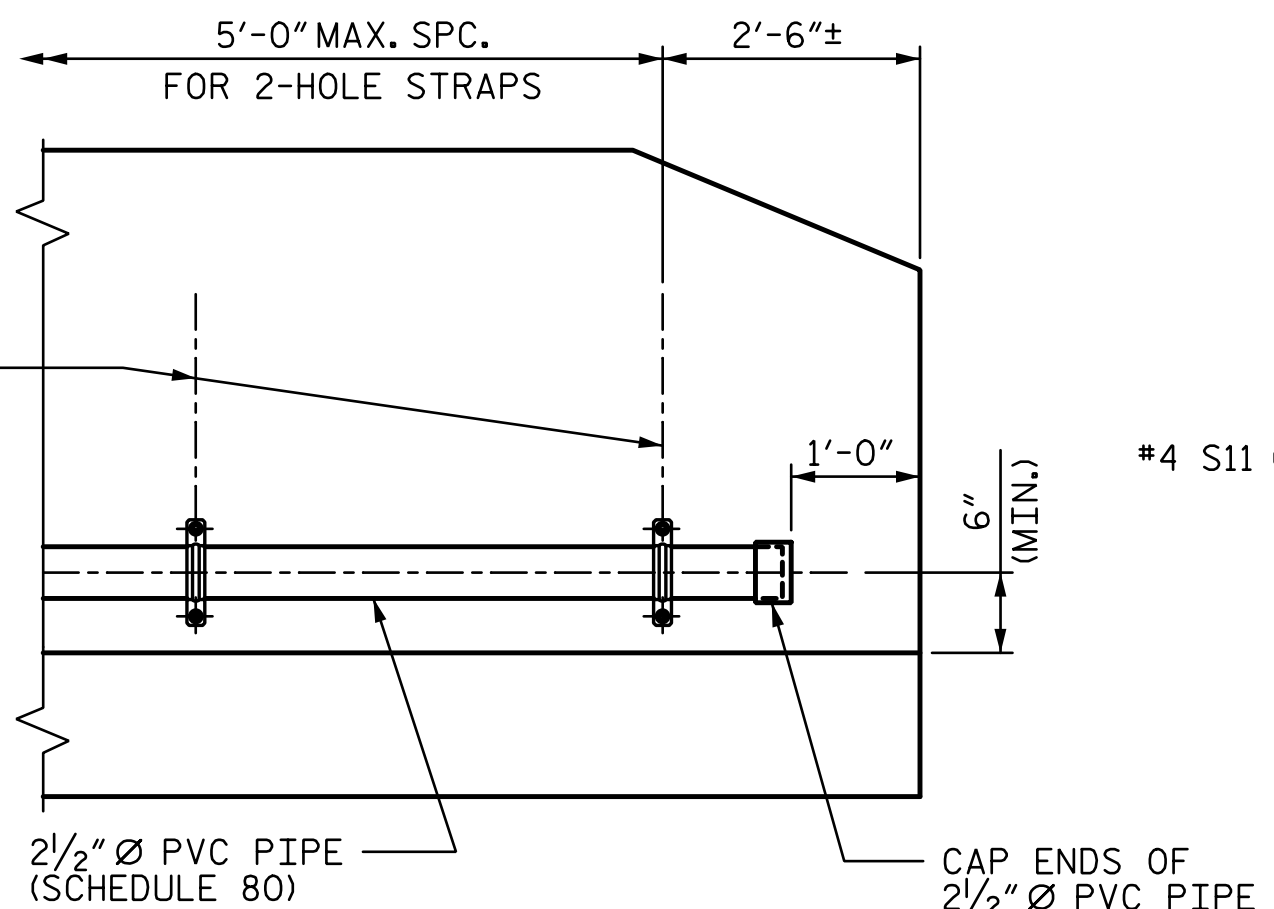
STATE OF NORTH CAROLINA
 DEPARTMENT OF TRANSPORTATION
 RALEIGH
**PLAN OF 60' UNIT
 30'-10" CLEAR ROADWAY
 120° SKEW
 (SPAN C)**

REVISIONS				SHEET NO.	
NO.	BY:	DATE:	NO.	BY:	DATE:
1			3		
2			4		

S-11
TOTAL SHEETS 23



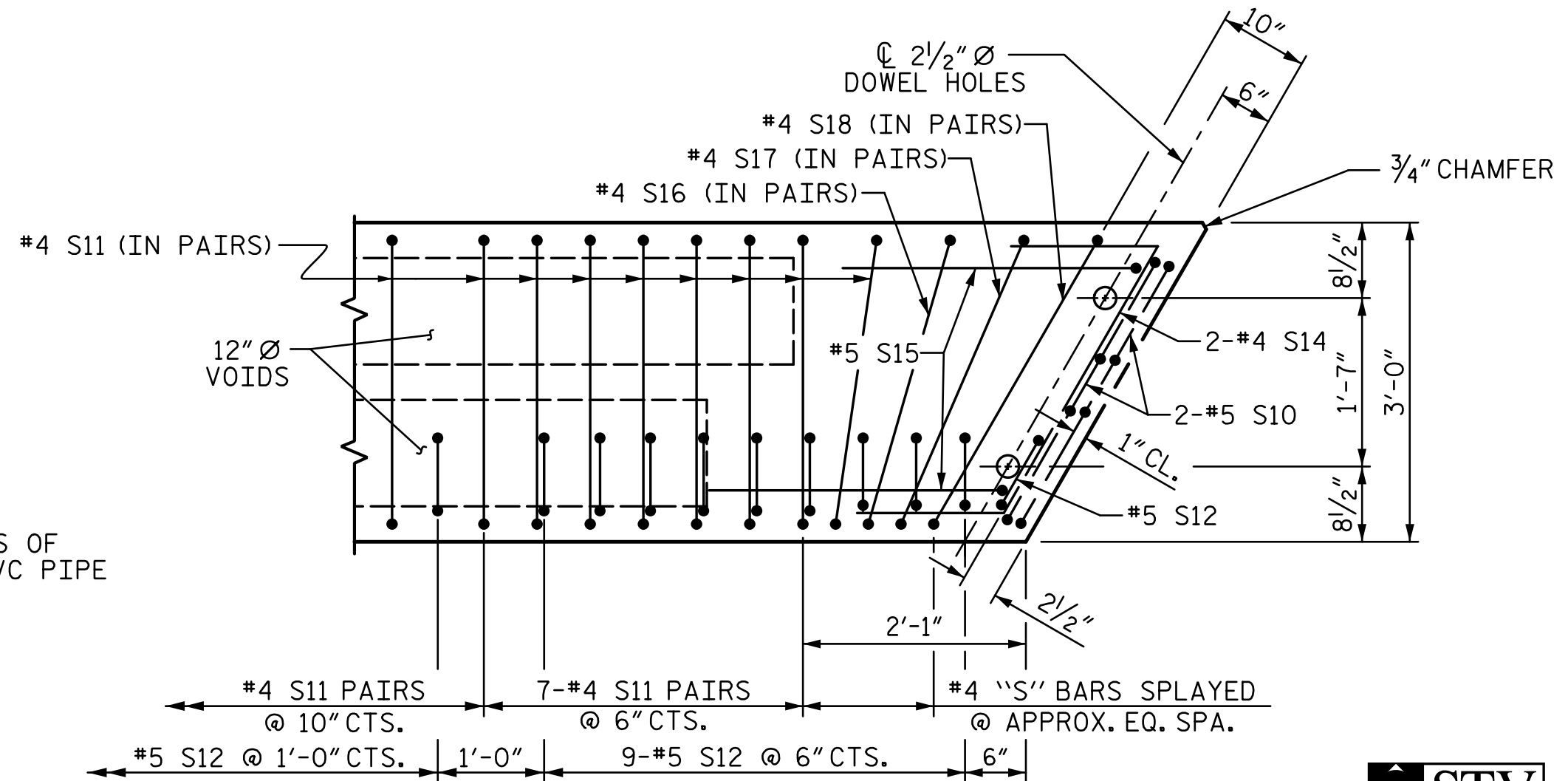
SECTION



ELEVATION

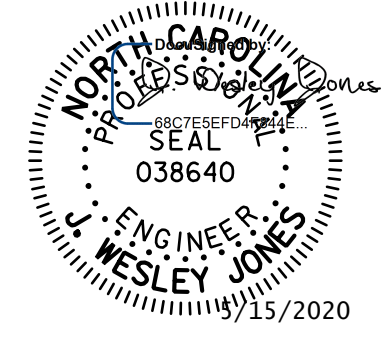
FIBER OPTIC CONDUIT SYSTEM DETAILS

2 1/2" Ø SCHEDULE 80 PVC PIPE ATTACHED TO THE BACK OF BOTH RAILS FOR FUTURE FIBER OPTIC CABLE.



DETAIL "A"

(SIMILAR EACH END OF UNIT)
 NOTE: EXTERIOR UNIT SHOWN - INTERIOR UNIT SIMILAR EXCEPT OMIT #5 S12 BARS.



STV 100 YEARS
 STV ENGINEERS, INC.
 900 West Trade St., Suite 715
 Charlotte, NC 28202
 NC License Number F-0991

DOCUMENT NOT CONSIDERED FINAL UNLESS ALL SIGNATURES COMPLETED

DRAWN BY : WAW	DATE : 10-19
CHECKED BY : JWJ	DATE : 11-19
DESIGN ENGINEER OF RECORD : JWJ	DATE : 04-20
DRAWN BY : MAA 6/10	REV. 12/5/11 MAA/AAC
CHECKED BY : MKT 7/10	REV. 8/14 MAA/TMG