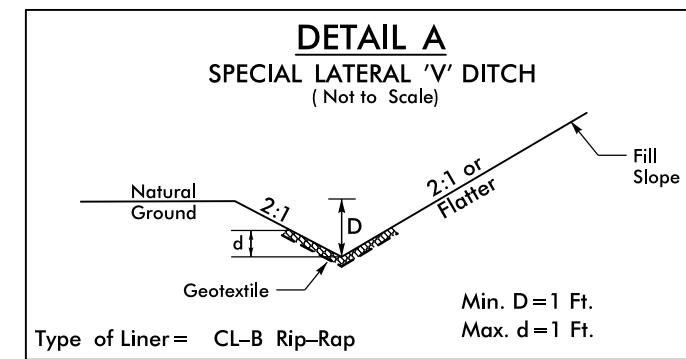
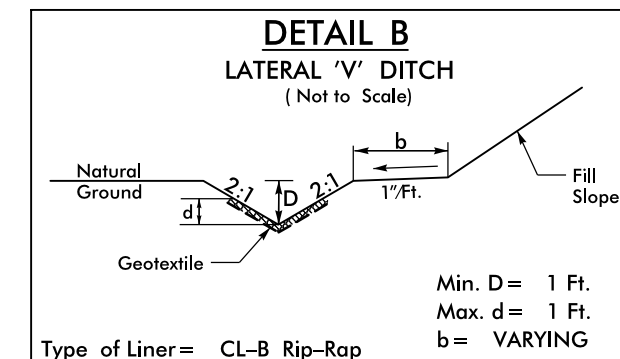


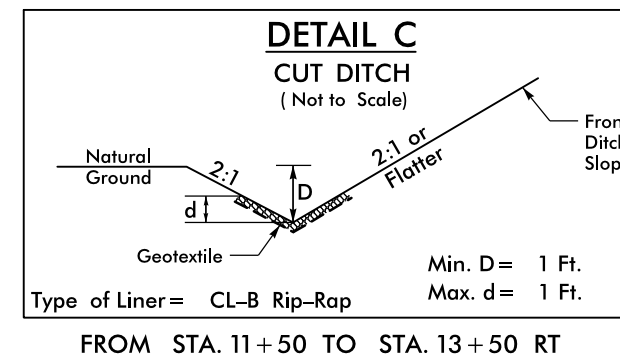
**FINAL PHASE
 EROSION CONTROL FOR
 CONSTRUCTION SHEET 4**



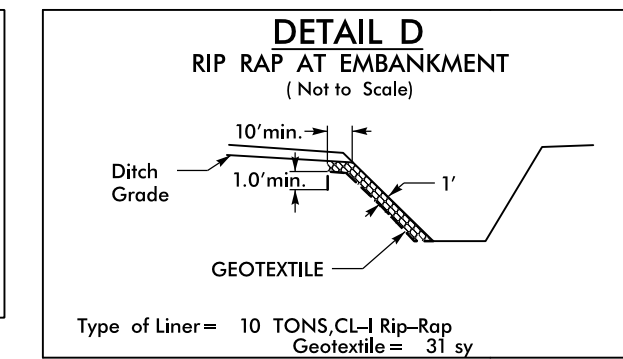
FROM STA. 10+35 RT TO STA. 11+50 RT
 FROM STA. 13+50 RT TO STA. 14+00 RT
 FROM STA. 20+33 RT TO STA. 22+30 RT



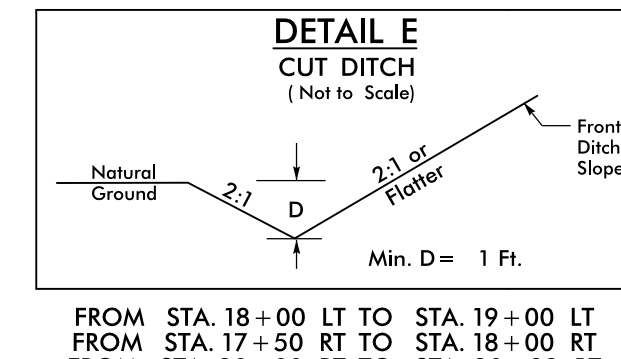
FROM STA. 14+50 RT TO STA. 15+15 LT
 FROM STA. 14+00 RT TO STA. 14+61 RT
 FROM STA. 16+71 RT TO STA. 17+11 RT
 FROM STA. 15+76 LT TO STA. 16+92 LT



FROM STA. 11+50 TO STA. 13+50 RT
 FROM STA. 17+10 TO STA. 17+50 RT

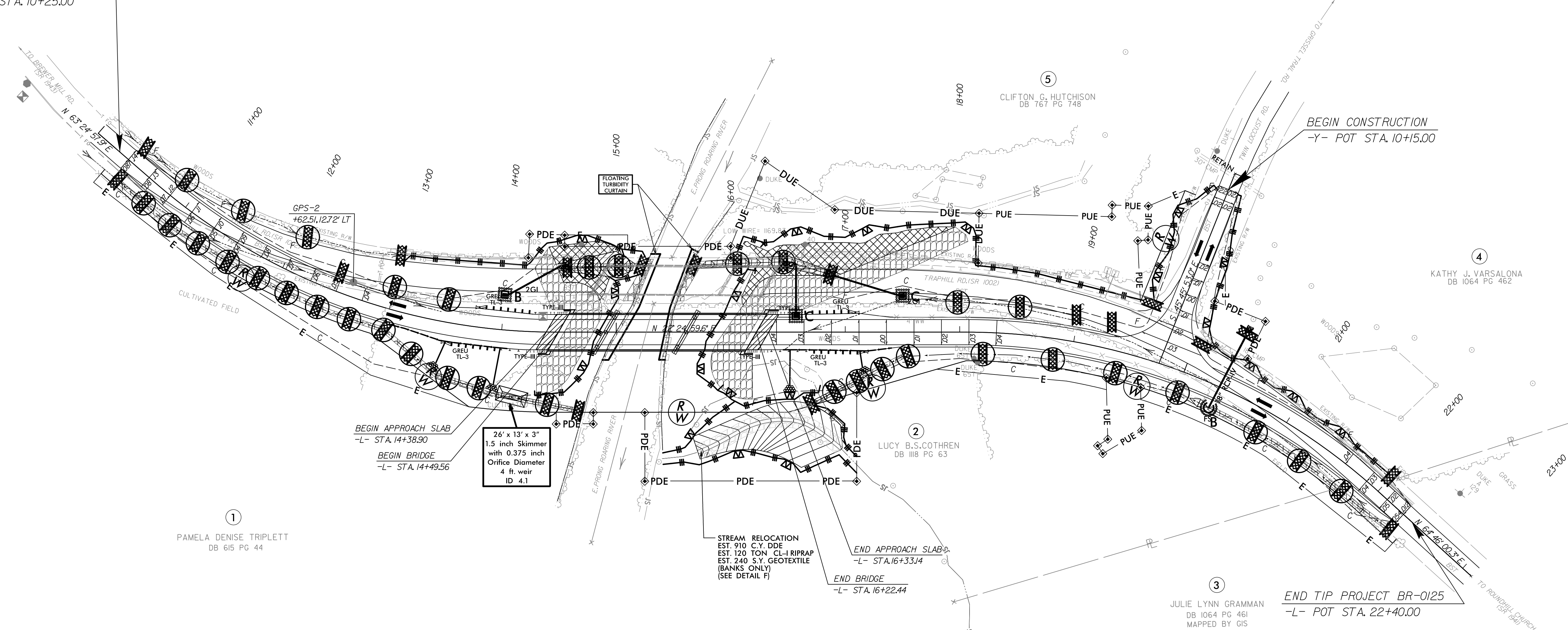


FROM STA. 15+15 LT TO STA. 15+30 LT
 FROM STA. 15+60 LT TO STA. 15+76 LT
 FROM STA. 14+61 RT TO STA. 14+73 RT



FROM STA. 18+00 LT TO STA. 19+00 LT
 FROM STA. 17+50 RT TO STA. 18+00 RT
 FROM STA. 20+00 RT TO STA. 20+33 RT

BEGIN TIP PROJECT BR-0125
 -L- POT STA. 10+25.00



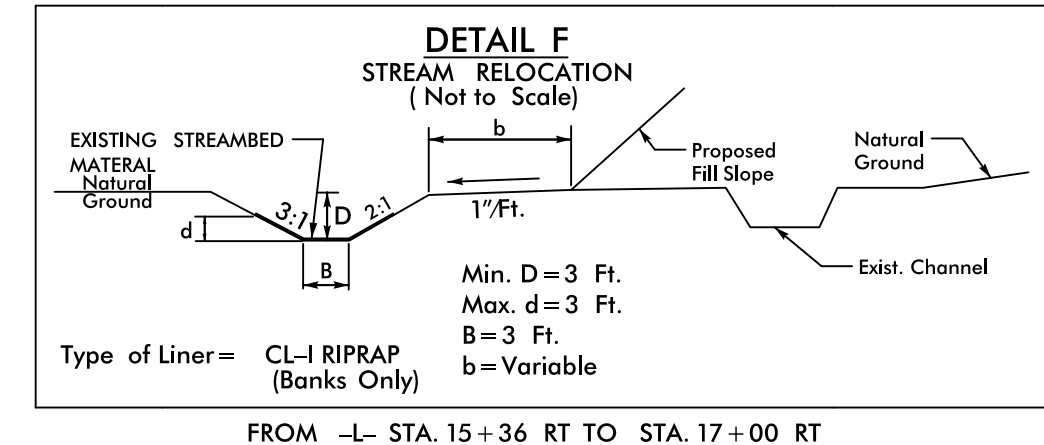
NOTE:
 UTILIZE SPECIAL STILLING BASIN(S) WHERE APPLICABLE.

NOTE:
 PLACE TEMPORARY ROCK SEDIMENT DAMS TYPE - B
 AND TEMPORARY ROCK SILT CHECKS TYPE - A AT
 DRAINAGE OUTLETS.

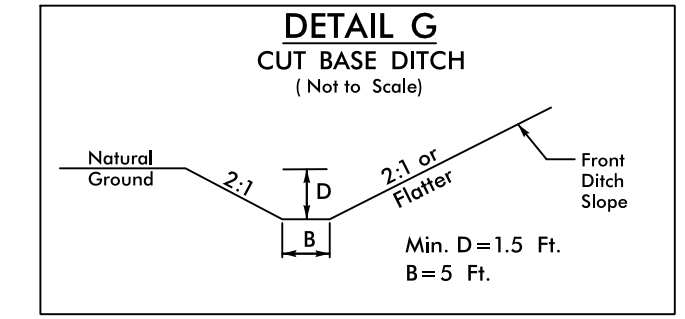
NOTE:
 PERIMETER EROSION CONTROL MEASURES SHALL BE
 INSTALLED DURING CLEARING AND GRUBBING PHASE.

NOTE:
 PLACEMENT AND QUANTITY OF EROSION CONTROL
 DEVICES SHOWN ON THESE PLANS MAY BE MODIFIED
 AS NEEDED IN ORDER TO MAINTAIN COMPLIANCE WITH
 ALL APPLICABLE REGULATIONS.

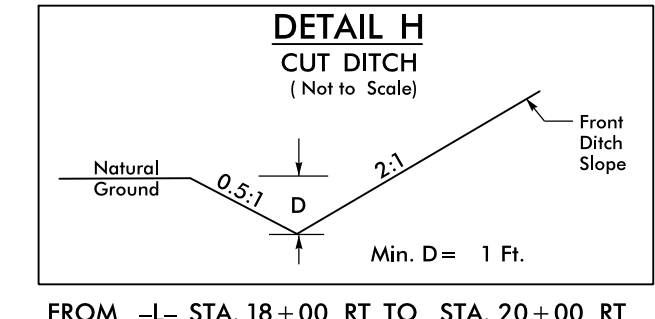
Place Matting for Erosion Control
 on Slope as Work Allows.
 -L- Sta. 13+00 RT to Sta. 14+30 RT
 -L- Sta. 16+20 RT to Sta. 17+50 RT



FROM -L- STA. 15+36 RT TO STA. 17+00 RT



FROM -L- STA. 17+50 LT TO STA. 18+00 LT



FROM -L- STA. 18+00 RT TO STA. 20+00 RT

8/17/99
 3/16/2020
 R:\Environmental\Design\Sheets\BR-0125_EC_FF_psh05.dgn
 mslacmo