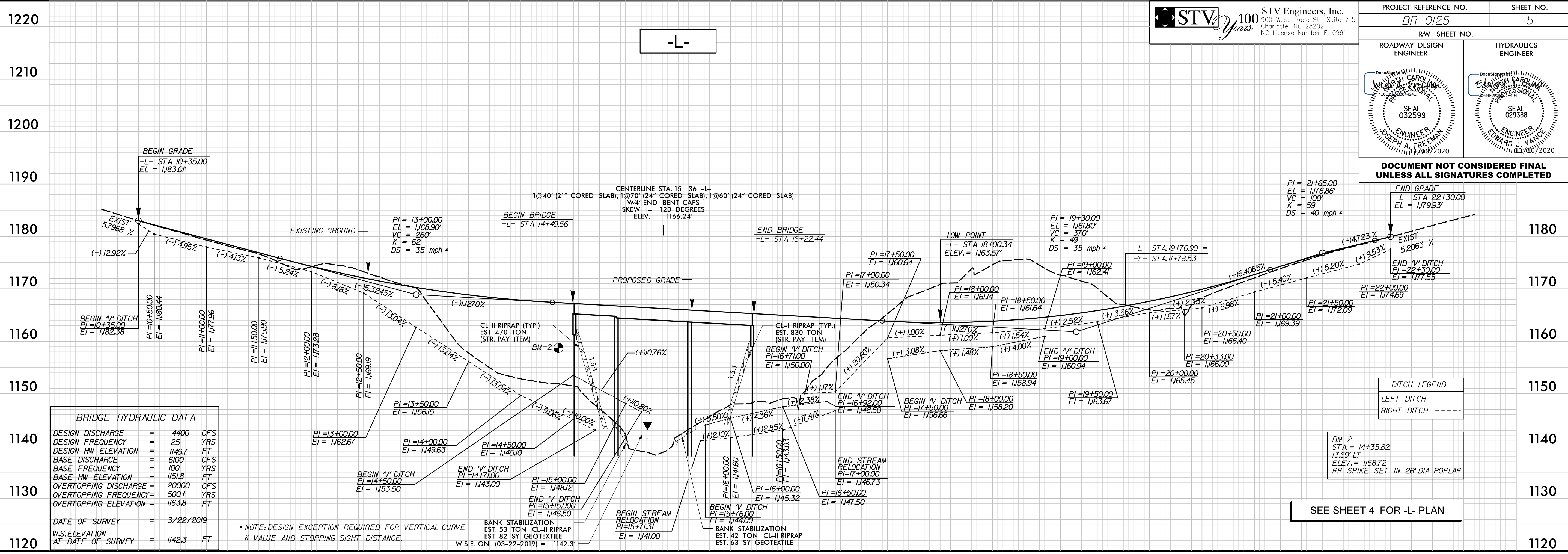


8/17/19



Professional Engineer seals for Joseph A. Freeman and Edward J. Van...

DOCUMENT NOT CONSIDERED FINAL UNLESS ALL SIGNATURES COMPLETED



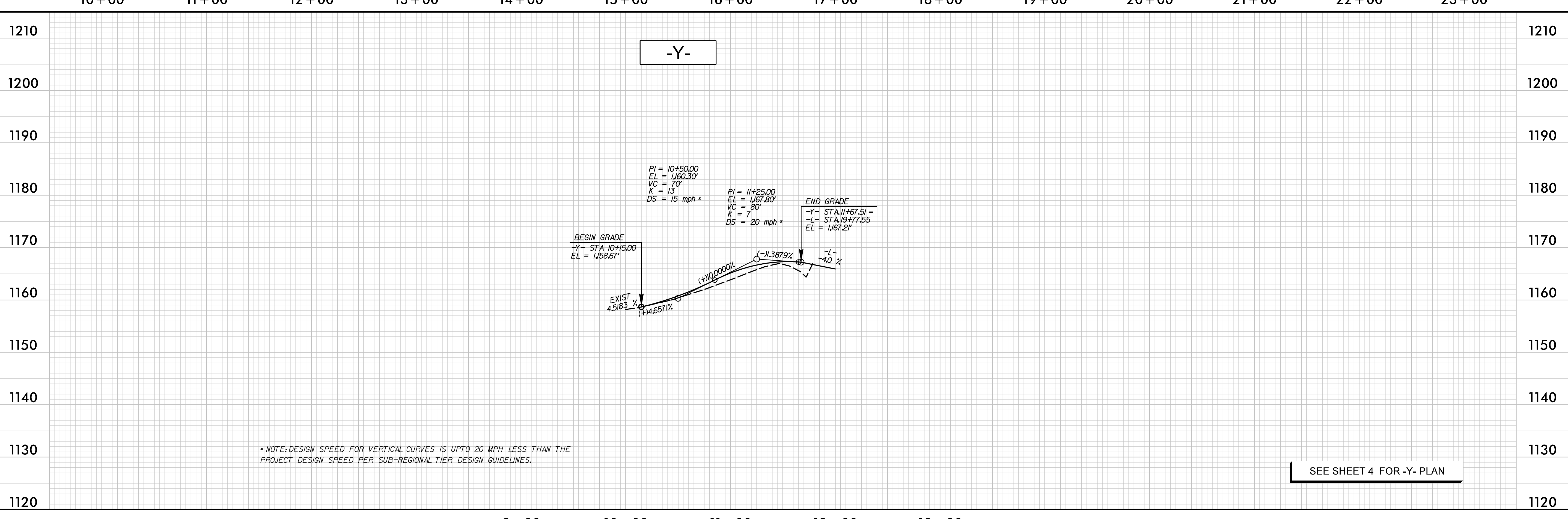
BRIDGE HYDRAULIC DATA table with columns for design discharge, frequency, elevation, etc.

\* NOTE: DESIGN EXCEPTION REQUIRED FOR VERTICAL CURVE K VALUE AND STOPPING SIGHT DISTANCE.

BANK STABILIZATION EST. 82 SY GEOTEXTILE W.S.E. ON (03-22-2019) = 1142.3'

SEE SHEET 4 FOR -L- PLAN

-Y-



\* NOTE: DESIGN SPEED FOR VERTICAL CURVES IS UPTO 20 MPH LESS THAN THE PROJECT DESIGN SPEED PER SUB-REGIONAL TIER DESIGN GUIDELINES.

SEE SHEET 4 FOR -Y- PLAN

1/10/2020 1:41:00 PM \\P\proj\SH\T\BR-0125\_rdy\_psh05pfl.dgn