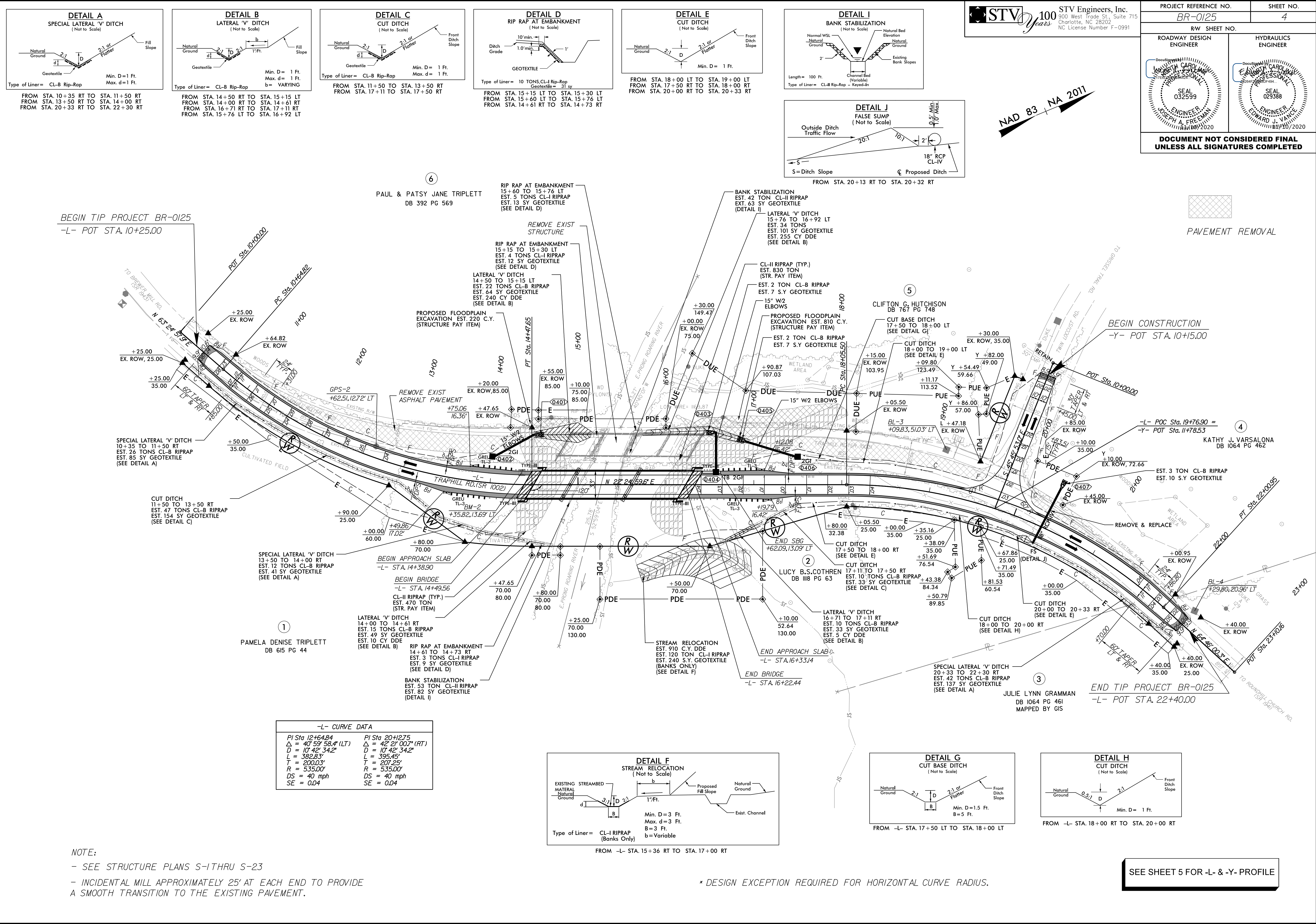


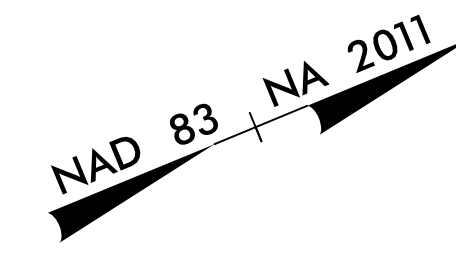
8/17/2020

K:\1\2020\Projects\Projects\SH\BR-0125\_rdy\_psh04.dgn



**STV 100 Years** STV Engineers, Inc.  
 300 West Trade St., Suite 715  
 Charlotte, NC 28202  
 NC License Number F-0991

PROJECT REFERENCE NO. **BR-0125** SHEET NO. **4**  
 RW SHEET NO. **HYDRAULICS ENGINEER**  
 ROADWAY DESIGN ENGINEER  
 SEAL 032599  
 SEAL 029388  
 DOCUMENT NOT CONSIDERED FINAL UNLESS ALL SIGNATURES COMPLETED



BEGIN TIP PROJECT BR-0125  
 -L- POT STA. 10+25.00

BEGIN CONSTRUCTION  
 -Y- POT STA. 10+15.00

END TIP PROJECT BR-0125  
 -L- POT STA. 22+40.00

**-L- CURVE DATA**

PI Sta 12+64.84	PI Sta 20+12.75
$\Delta = 40^{\circ}59'58.4"$ (LT)	$\Delta = 42^{\circ}21'00.7"$ (RT)
D = 10'42'34.2"	D = 10'42'34.2"
L = 382.83'	L = 395.45'
T = 200.03'	T = 207.25'
R = 535.00'	R = 535.00'
DS = 40 mph	DS = 40 mph
SE = 0.04	SE = 0.04

**NOTE:**  
 - SEE STRUCTURE PLANS S-1 THRU S-23  
 - INCIDENTAL MILL APPROXIMATELY 25' AT EACH END TO PROVIDE A SMOOTH TRANSITION TO THE EXISTING PAVEMENT.

\* DESIGN EXCEPTION REQUIRED FOR HORIZONTAL CURVE RADIUS.

SEE SHEET 5 FOR -L- & -Y- PROFILE