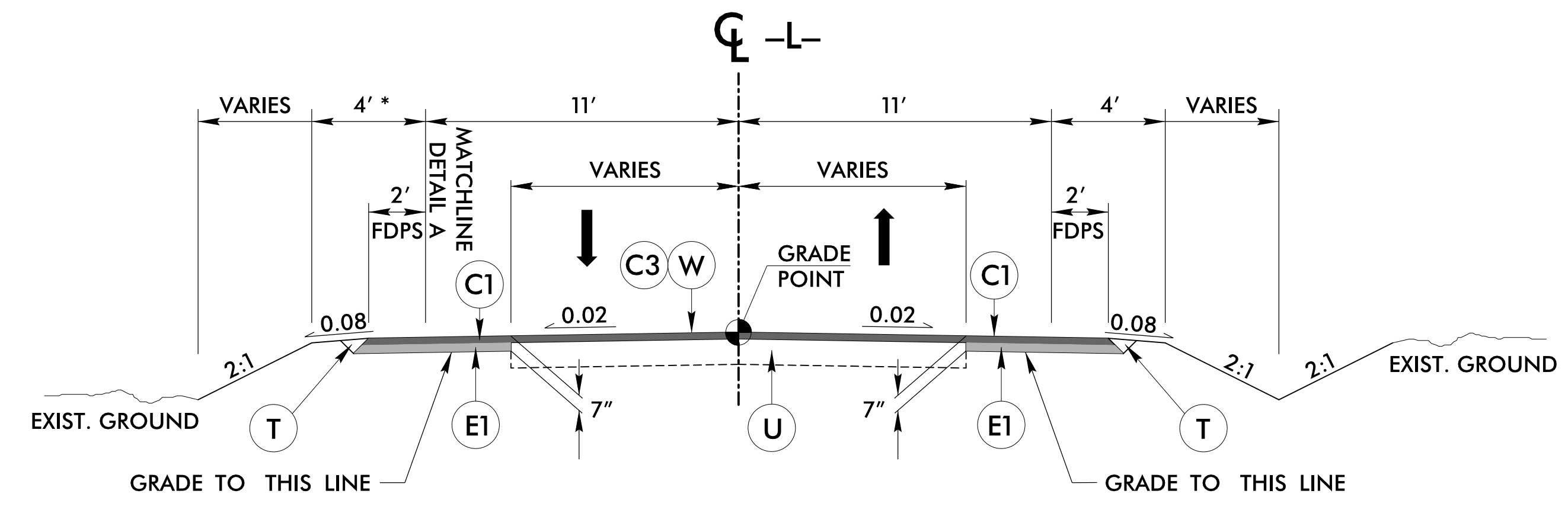


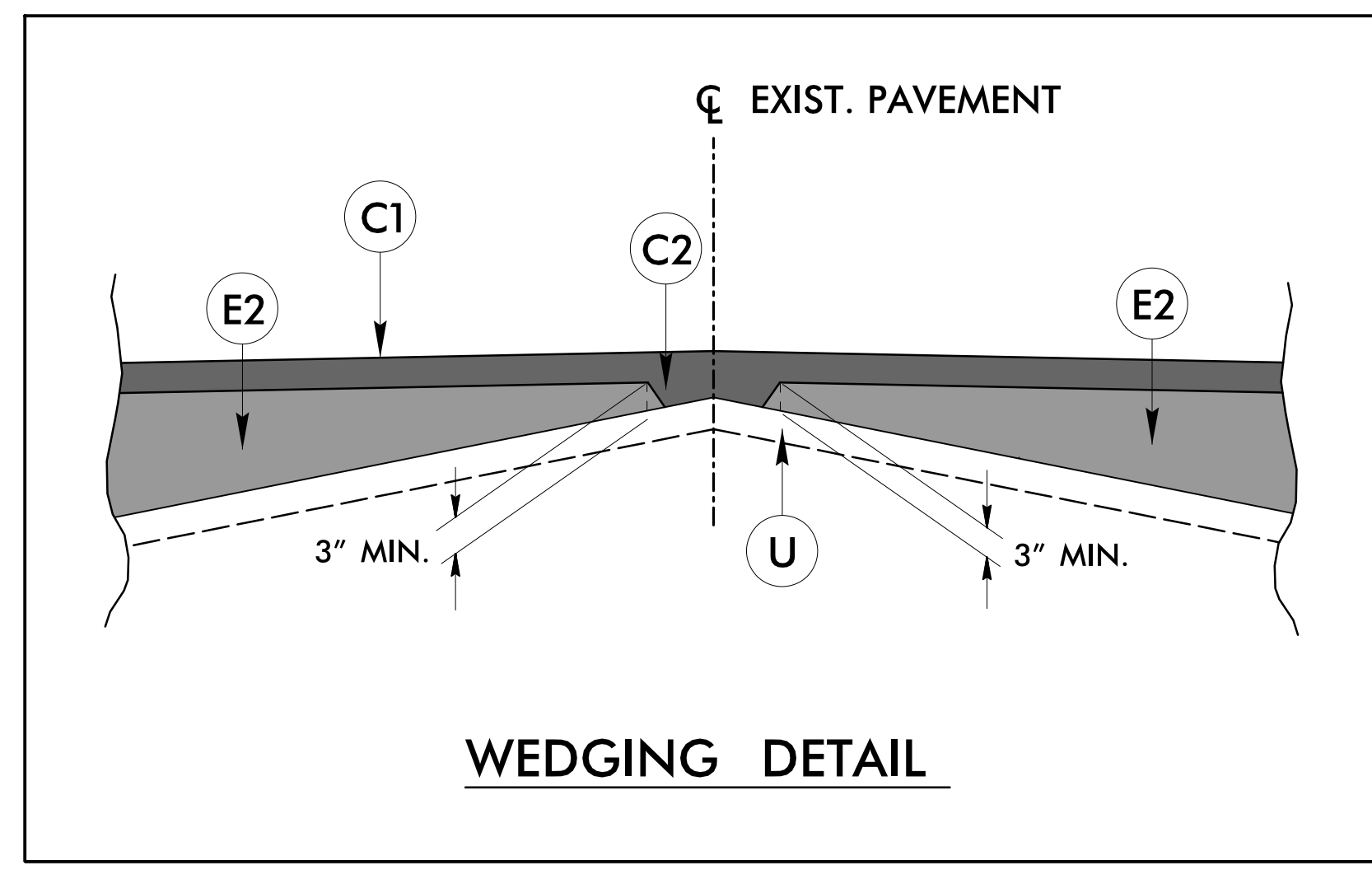
PAVEMENT SCHEDULE (FINAL)	
C1	PROP. APPROX. 3.0" ASPHALT CONCRETE SURFACE COURSE, TYPE S9.5B, AT AN AVERAGE RATE OF 165 LBS. PER SQ. YD. IN EACH OF TWO LAYERS.
C2	PROP. VAR. DEPTH ASPHALT CONCRETE SURFACE COURSE, TYPE S9.5B, AT AN AVERAGE RATE OF 110 LBS. PER SQ. YD. PER 1.0" DEPTH. TO BE PLACED IN LAYERS NOT LESS THAN 1.0" IN DEPTH OR GREATER THAN 1.5" IN DEPTH.
C3	PROP. APPROX. 1 1/2" ASPHALT CONCRETE SURFACE COURSE, TYPE S9.5B, AT AN AVERAGE RATE OF 165 LBS. PER SQ. YD.
E1	PROP. APPROX. 4.0" ASPHALT CONCRETE BASE COURSE, TYPE B25.0C, AT AN AVERAGE RATE OF 456 LBS. PER SQ. YD.
E2	PROP. VAR. DEPTH ASPHALT CONCRETE BASE COURSE, TYPE B25.0C, AT AN AVERAGE RATE OF 114 LBS. PER SQ. YD. PER 1.0" DEPTH. TO BE PLACED IN LAYERS NOT LESS THAN 3.0" IN DEPTH OR GREATER THAN 5.5" IN DEPTH.
R	CONCRETE SHOULDER BERM GUTTER
T	EARTH MATERIAL
U	EXISTING PAVEMENT
V	INCIDENTAL MILLING
W	PAVEMENT WEDGING

ALL PAVEMENT SLOPES ARE 1:1 UNLESS SHOWN OTHERWISE.

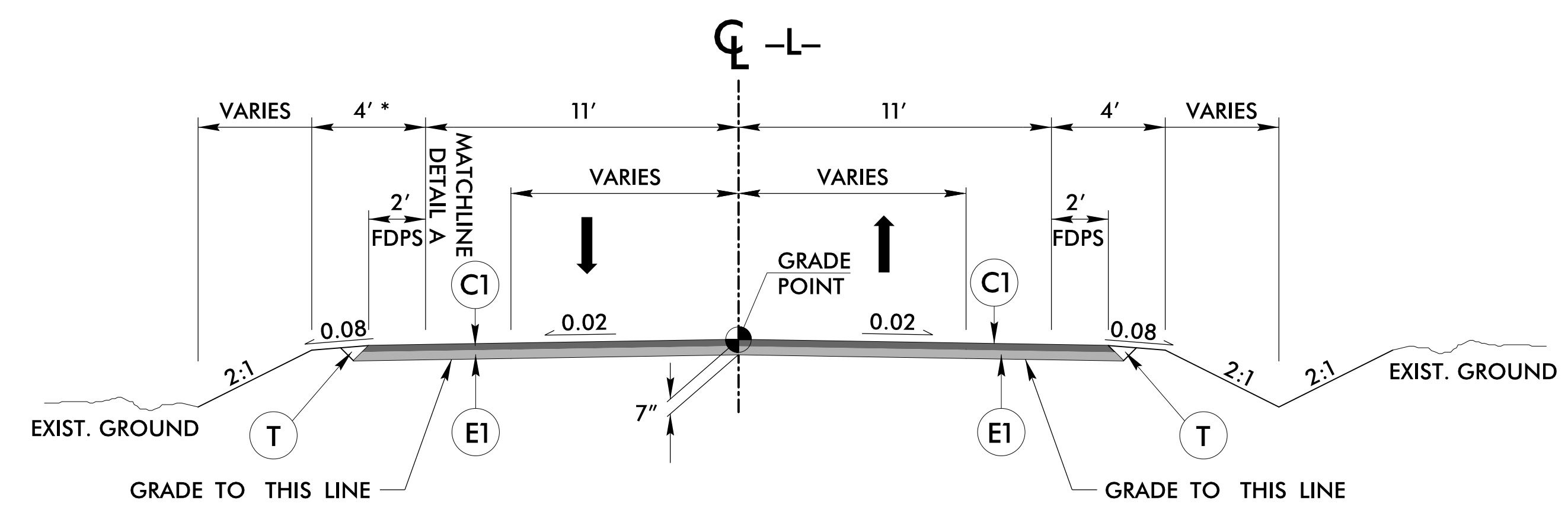


TYPICAL SECTION 1

* 7' WITH GUARDRAIL
 -L- STA. 10+35.00 TO 12+34.49
 -L- STA. 20+75.00 TO 22+30.00

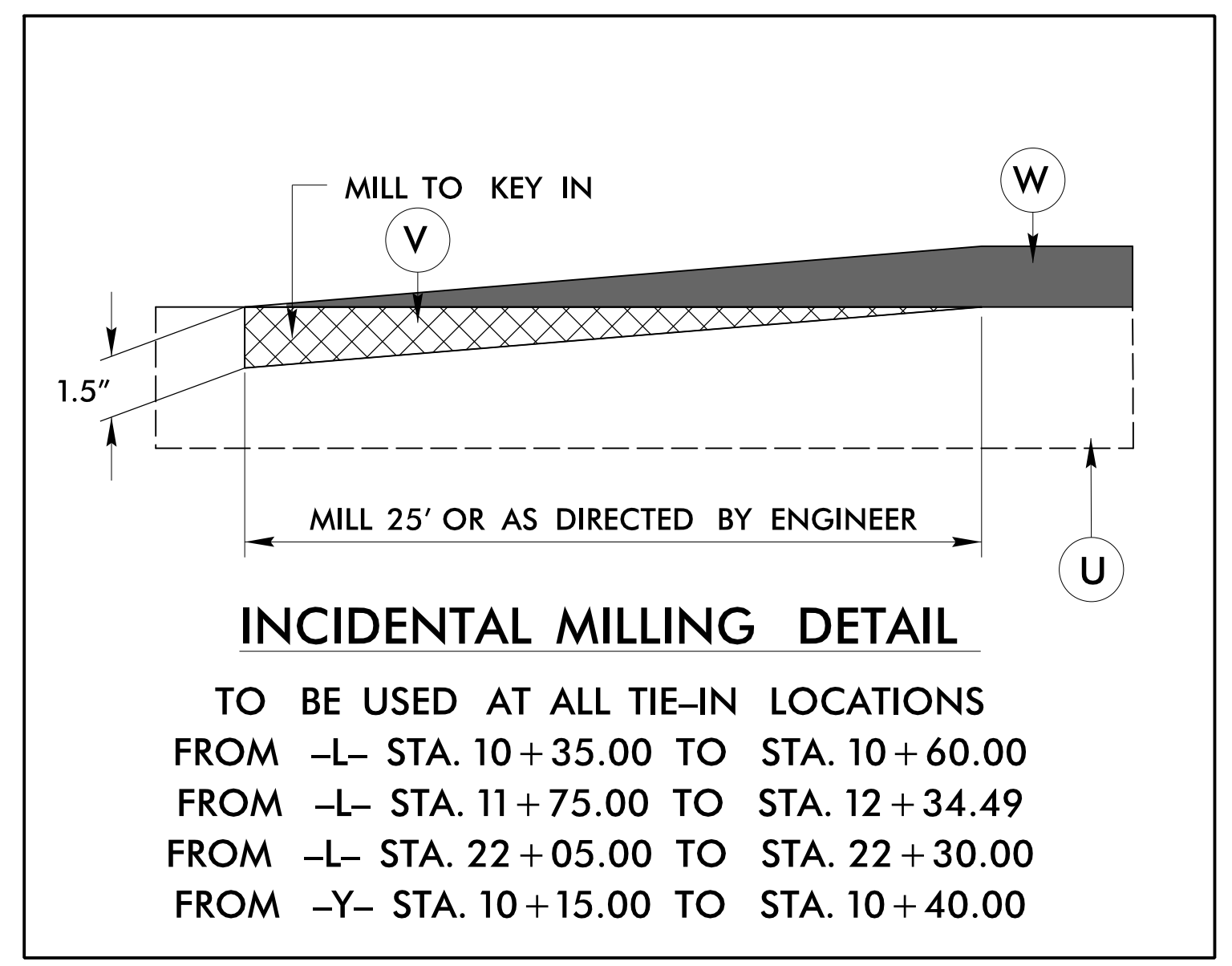


WEDGING DETAIL



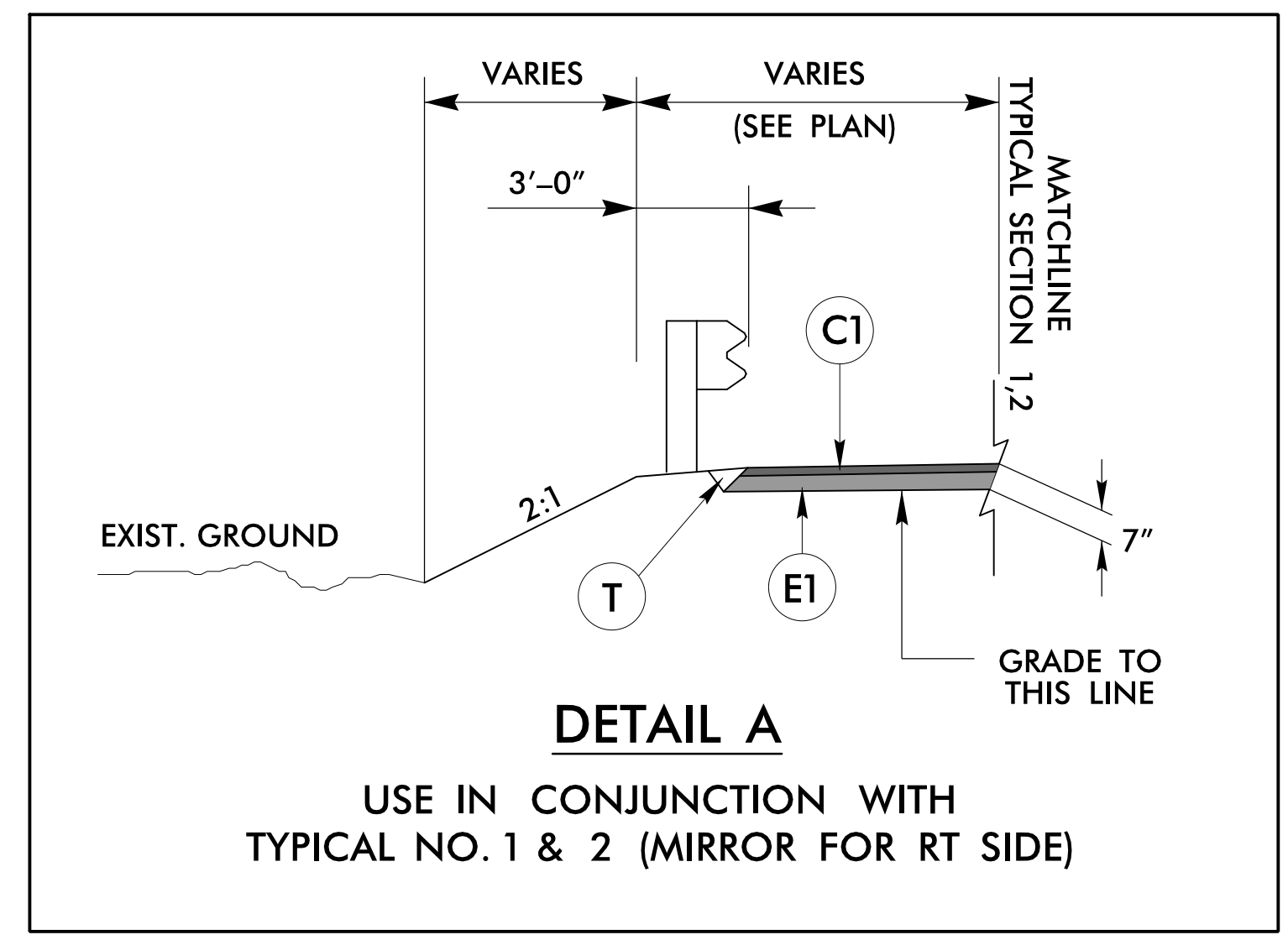
TYPICAL SECTION 2

* 7' WITH GUARDRAIL
 -L- STA. 12+34.49 TO 14+49.56 (BEGIN BRIDGE)
 -L- STA. 16+22.44 (END BRIDGE) TO 20+75.00



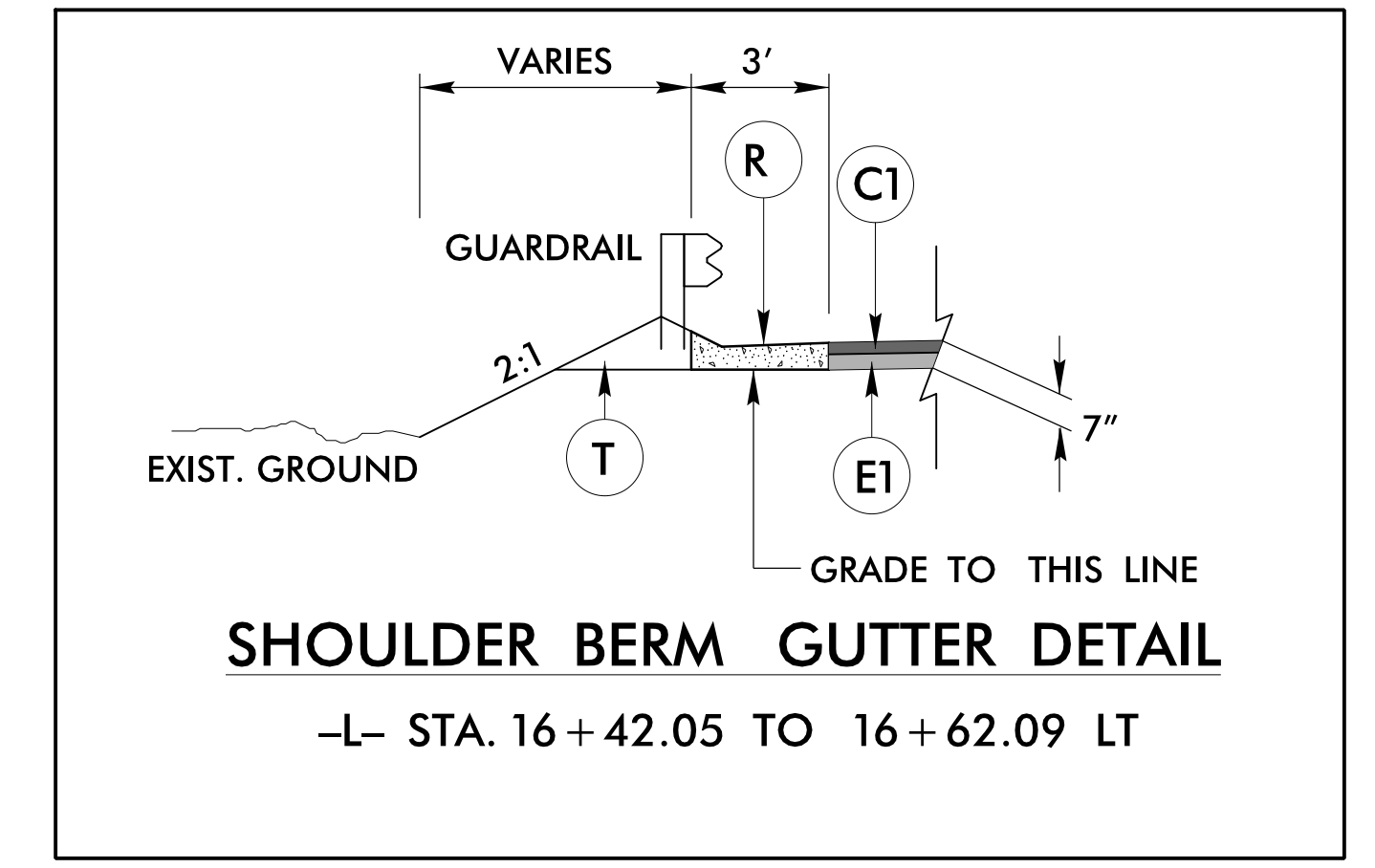
INCIDENTAL MILLING DETAIL

TO BE USED AT ALL TIE-IN LOCATIONS
 FROM -L- STA. 10+35.00 TO STA. 10+60.00
 FROM -L- STA. 11+75.00 TO STA. 12+34.49
 FROM -L- STA. 22+05.00 TO STA. 22+30.00
 FROM -Y- STA. 10+15.00 TO STA. 10+40.00



DETAIL A

USE IN CONJUNCTION WITH
 TYPICAL NO. 1 & 2 (MIRROR FOR RT SIDE)



SHOULDER BERM GUTTER DETAIL

-L- STA. 16+42.05 TO 16+62.09 LT