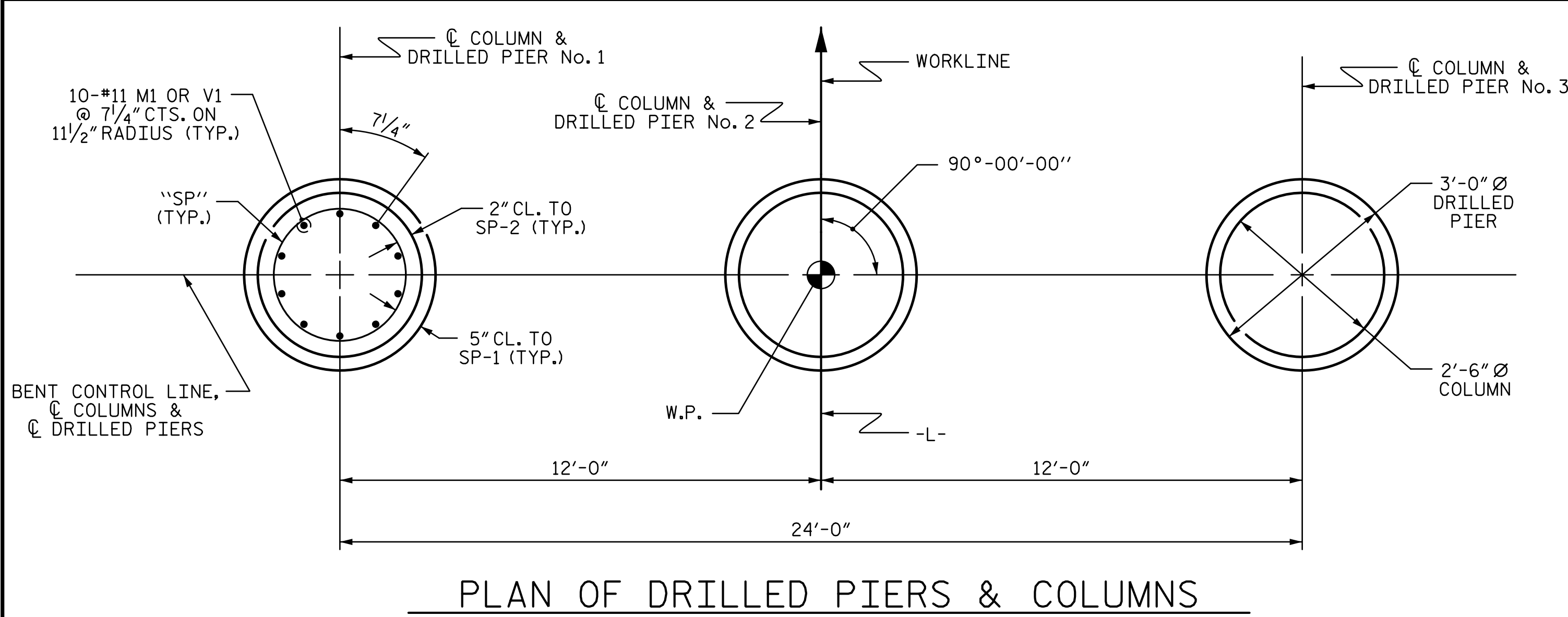
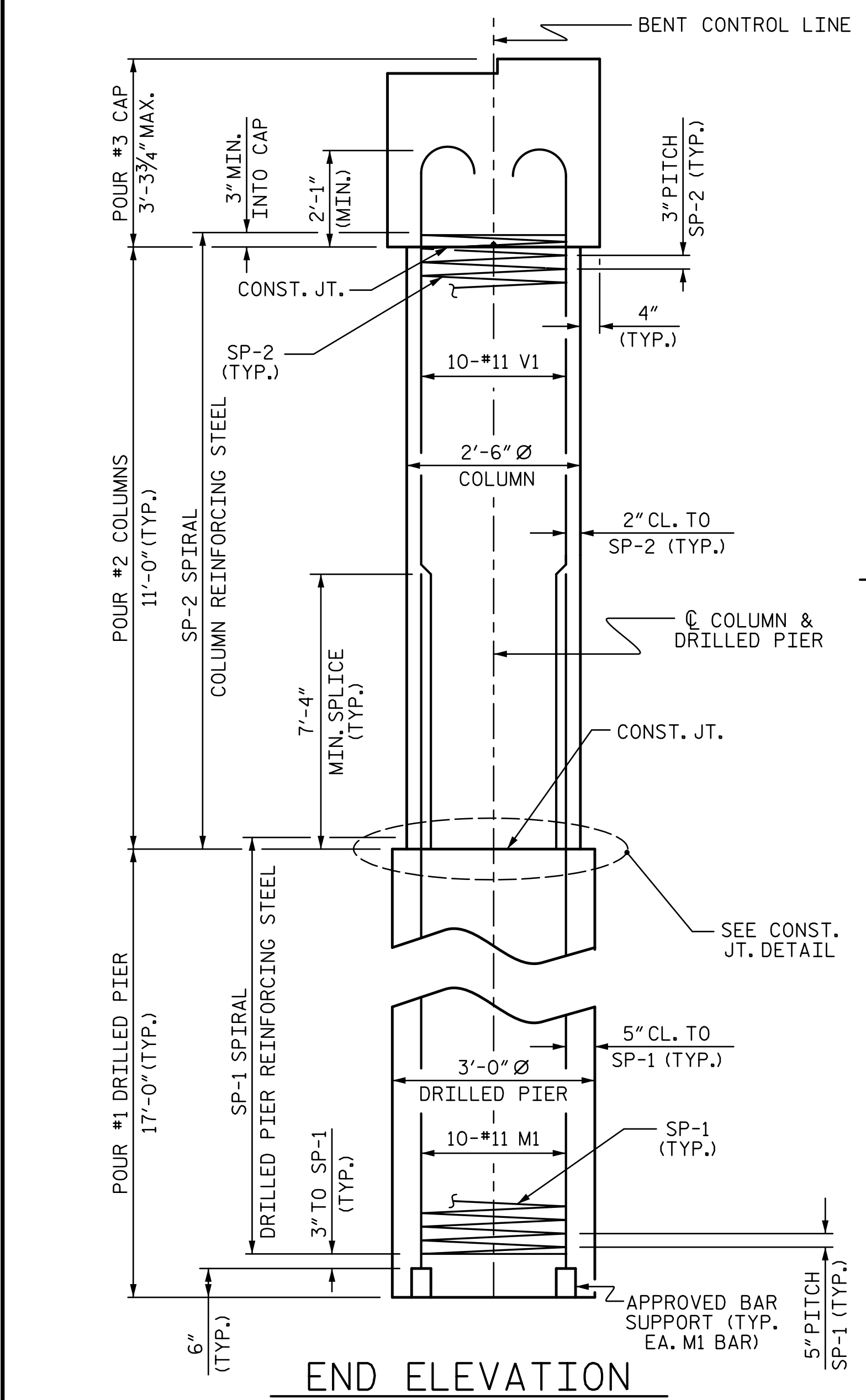


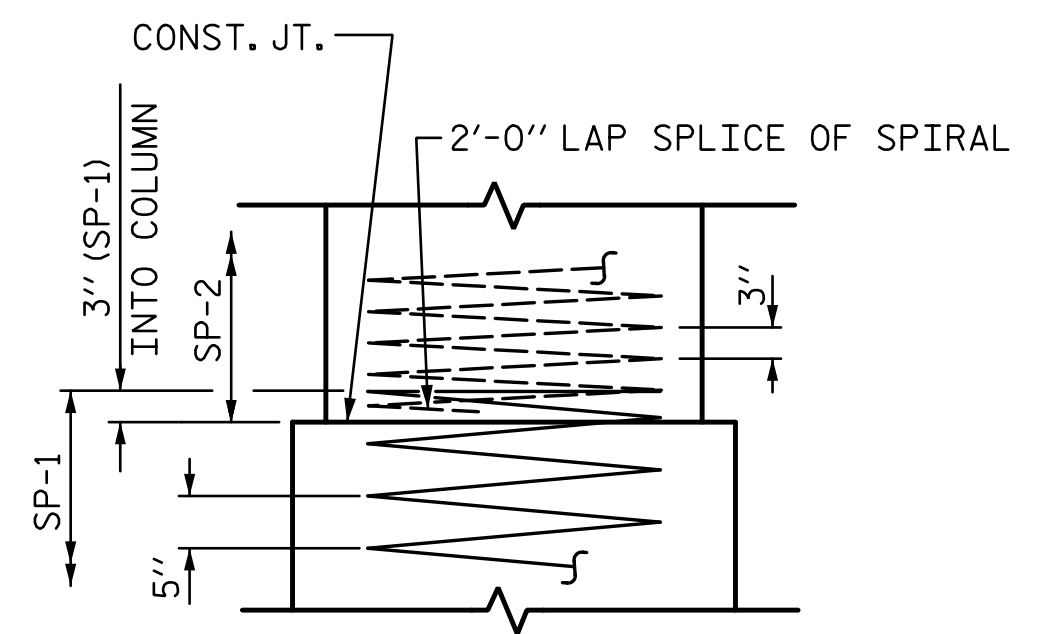
4/14/2020 2:42:00 PM R:\Structures\ustation\Finals\401037_BR-0124_SML_B4_019_950166.dgn Jones



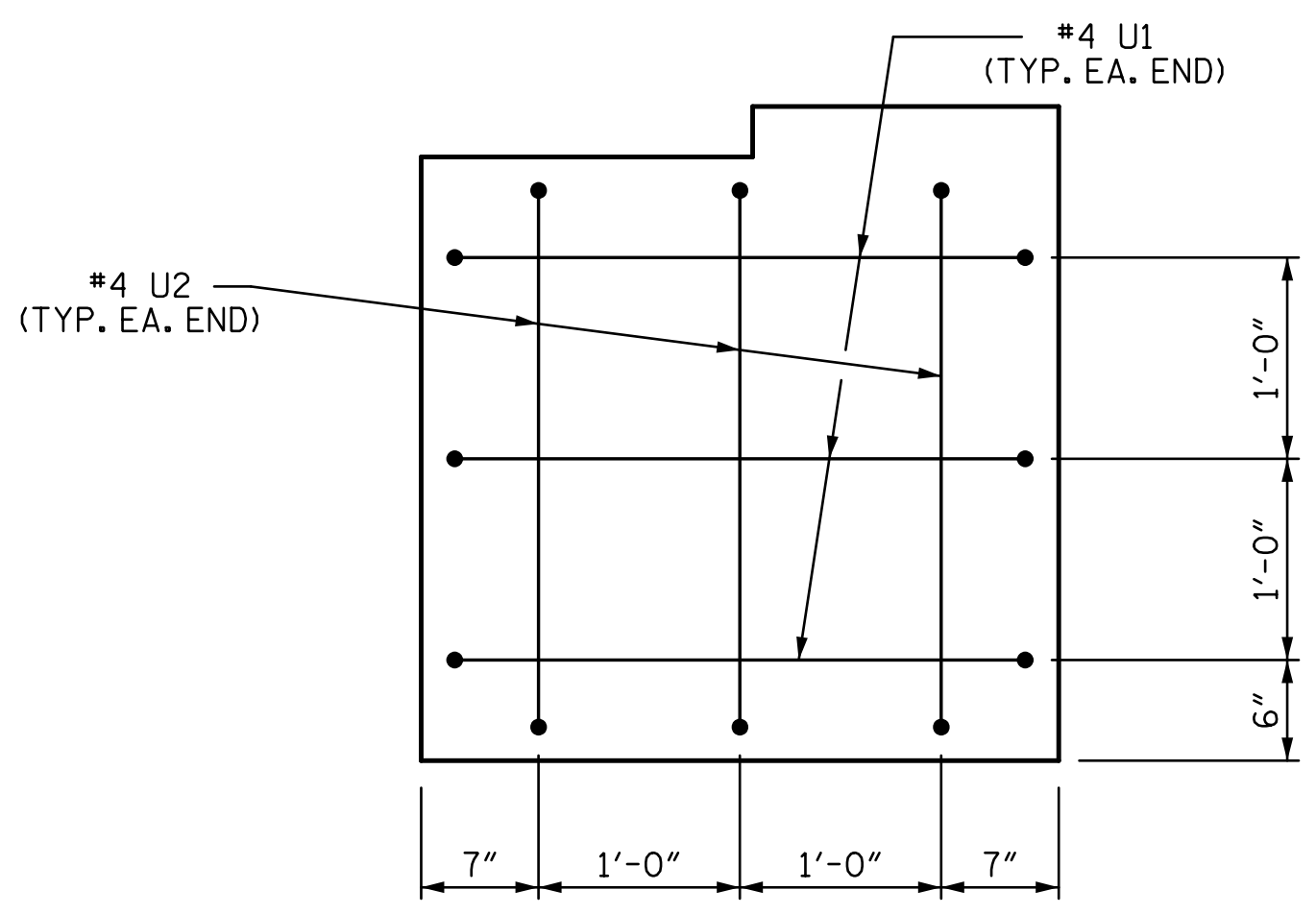
PLAN OF DRILLED PIERS & COLUMNS



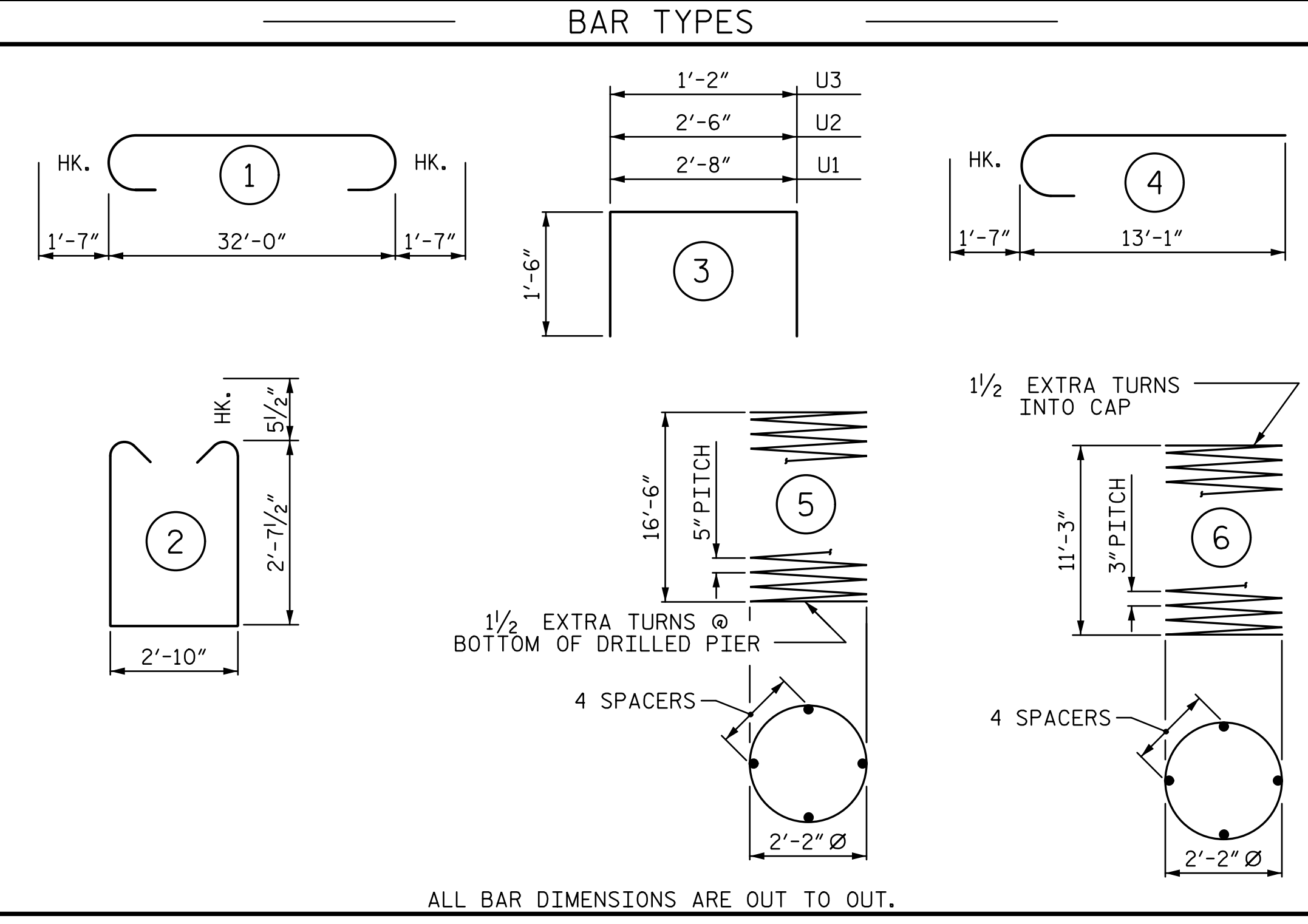
END ELEVATION



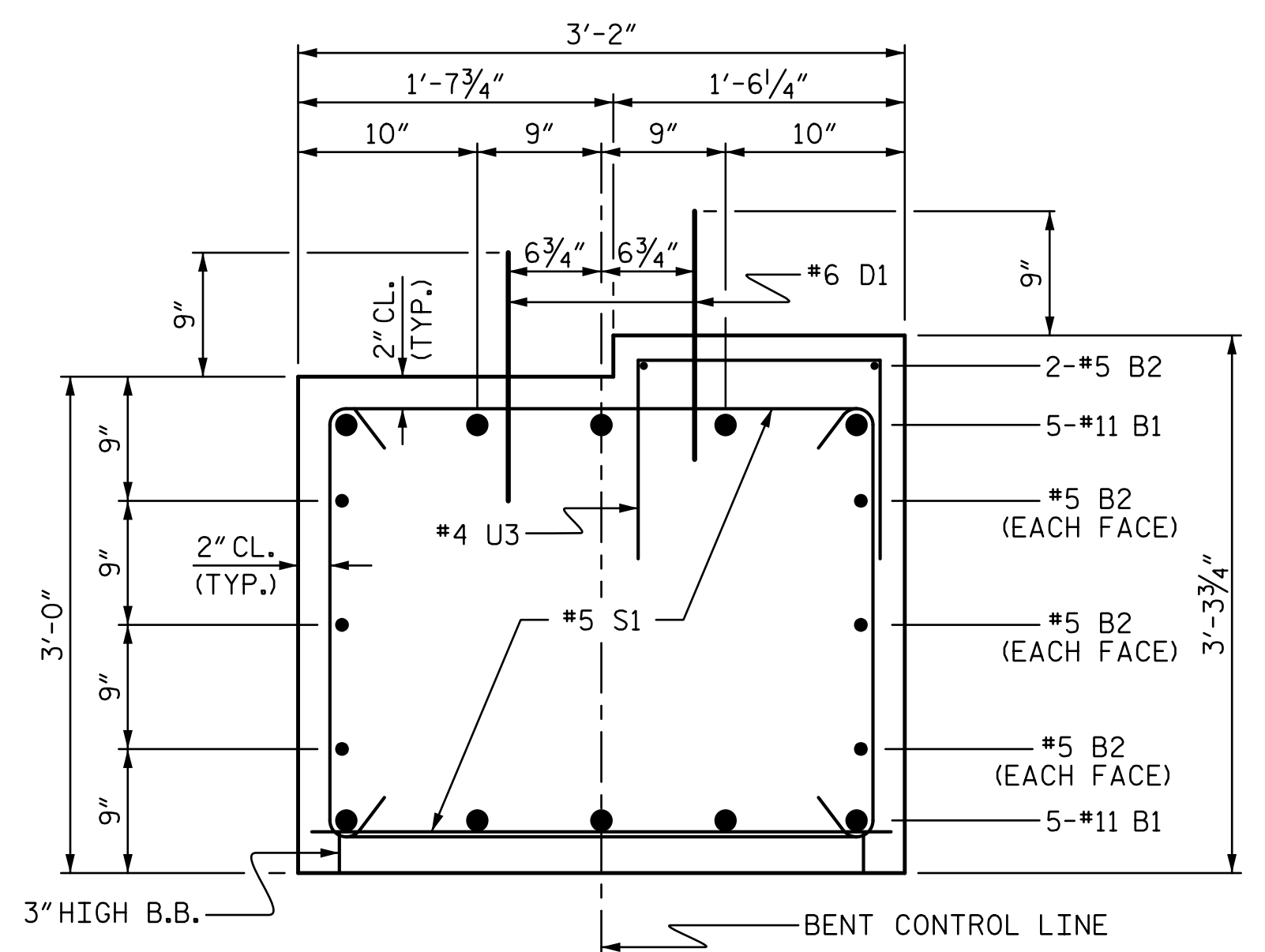
CONSTRUCTION JOINT DETAIL



END OF CAP VIEW (TYPICAL BOTH ENDS)



ALL BAR DIMENSIONS ARE OUT TO OUT.



SECTION THRU CAP

BILL OF MATERIAL FOR ONE BENT					
BAR	NO.	SIZE	TYPE	LENGTH	WEIGHT
B1	10	#11	1	35'-2"	1868
B2	8	#5	STR	32'-2"	268
D1	40	#6	STR	1'-6"	90
M1	30	#11	STR	26'-10"	4277
S1	52	#5	2	9'-0"	488
U1	6	#4	3	5'-8"	23
U2	6	#4	3	5'-6"	22
U3	32	#4	3	4'-2"	89
V1	30	#11	4	14'-8"	2338
REINFORCING STEEL (FOR ONE BENT)					9463 LBS.
SP-1	3	*	5	273'-7"	856
SP-2	3	**	6	310'-8"	623
SPIRAL COLUMN REINFORCING STEEL (FOR ONE BENT)					1479 LBS.
* THE SP-1 SPIRAL REINFORCING STEEL SHALL BE W31 OR D-31 COLD DRAWN WIRE OR #5 PLAIN OR DEFORMED BAR					
** THE SP-2 SPIRAL REINFORCING STEEL SHALL BE W20 OR D-20 COLD DRAWN WIRE OR #4 PLAIN OR DEFORMED BAR					

CLASS A CONCRETE BREAKDOWN (FOR ONE BENT)	
POUR #2 (COLUMNS)	6.0 C.Y.
POUR #3 (CAP)	12.0 C.Y.
TOTAL CLASS A CONCRETE	18.0 C.Y.
DRILLED PIERS: (FOR ONE BENT)	
DRILLED PIER CONCRETE POUR #1 (DRILLED PIERS)	13.4 C.Y.
3'-0" Ø DRILLED PIER NOT IN SOIL	25.0 LIN. FT.
3'-0" Ø DRILLED PIER IN SOIL	26.0 LIN. FT.
PERMANENT STEEL CASING FOR 3'-0" Ø DRILLED PIER	30.0 LIN. FT.
CSL TUBES	222.0 LIN. FT.

PROJECT NO. BR-0124
WILKES COUNTY
 STATION: 15+07.00 -L-

SHEET 2 OF 2

STATE OF NORTH CAROLINA DEPARTMENT OF TRANSPORTATION RALEIGH				
SUBSTRUCTURE BENT No. 2				
REVISIONS				SHEET NO.
NO.	BY:	DATE:	NO.	DATE:
1			3	
2			4	
				S-19
				TOTAL SHEETS 21

DRAWN BY : WAW	DATE : 10-19
CHECKED BY : JWJ	DATE : 12-19
DESIGN ENGINEER OF RECORD : JWJ	DATE : 4-20
DRAWN BY : DGE 3/10	REV. 11/14 MAA/TMG
CHECKED BY : MKT 3/10	

STV 100 YEARS
 STV ENGINEERS, INC.
 900 West Trade St., Suite 715
 Charlotte, NC 28202
 NC License Number F-0991

DOCUMENT NOT CONSIDERED FINAL UNLESS ALL SIGNATURES COMPLETED