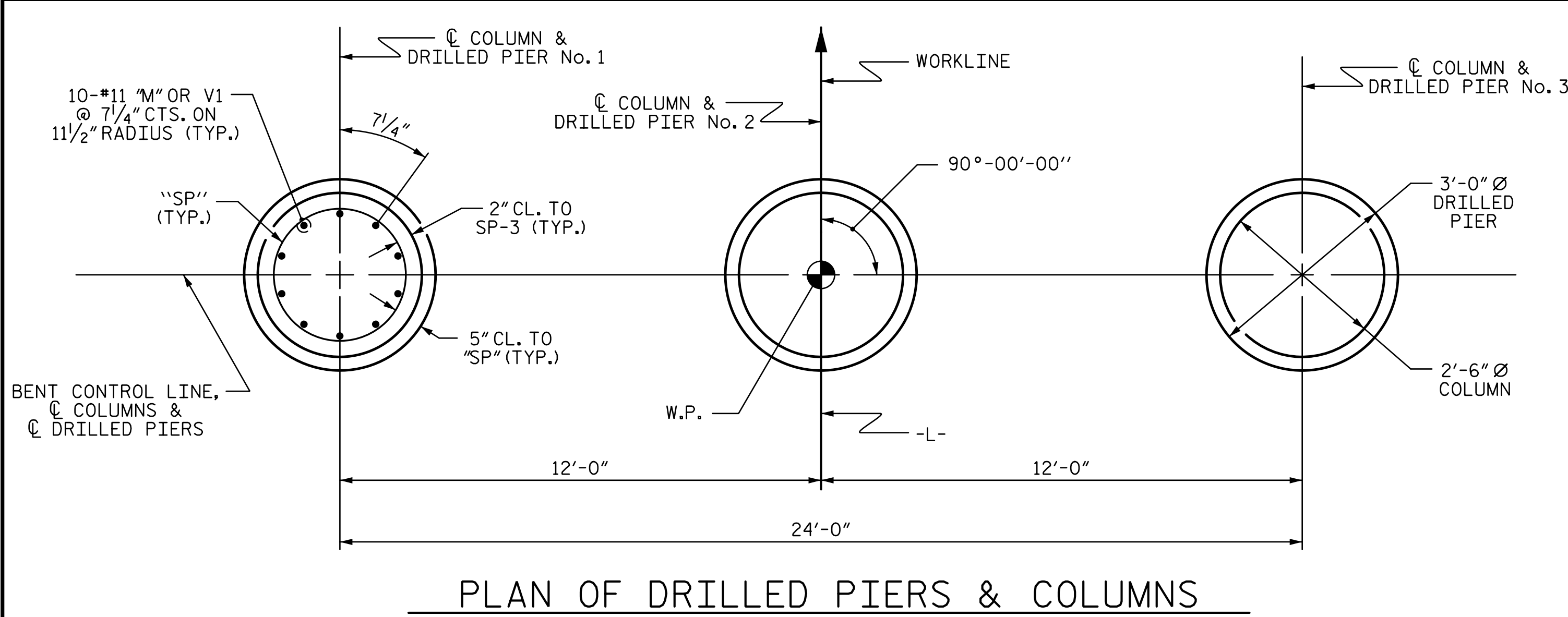
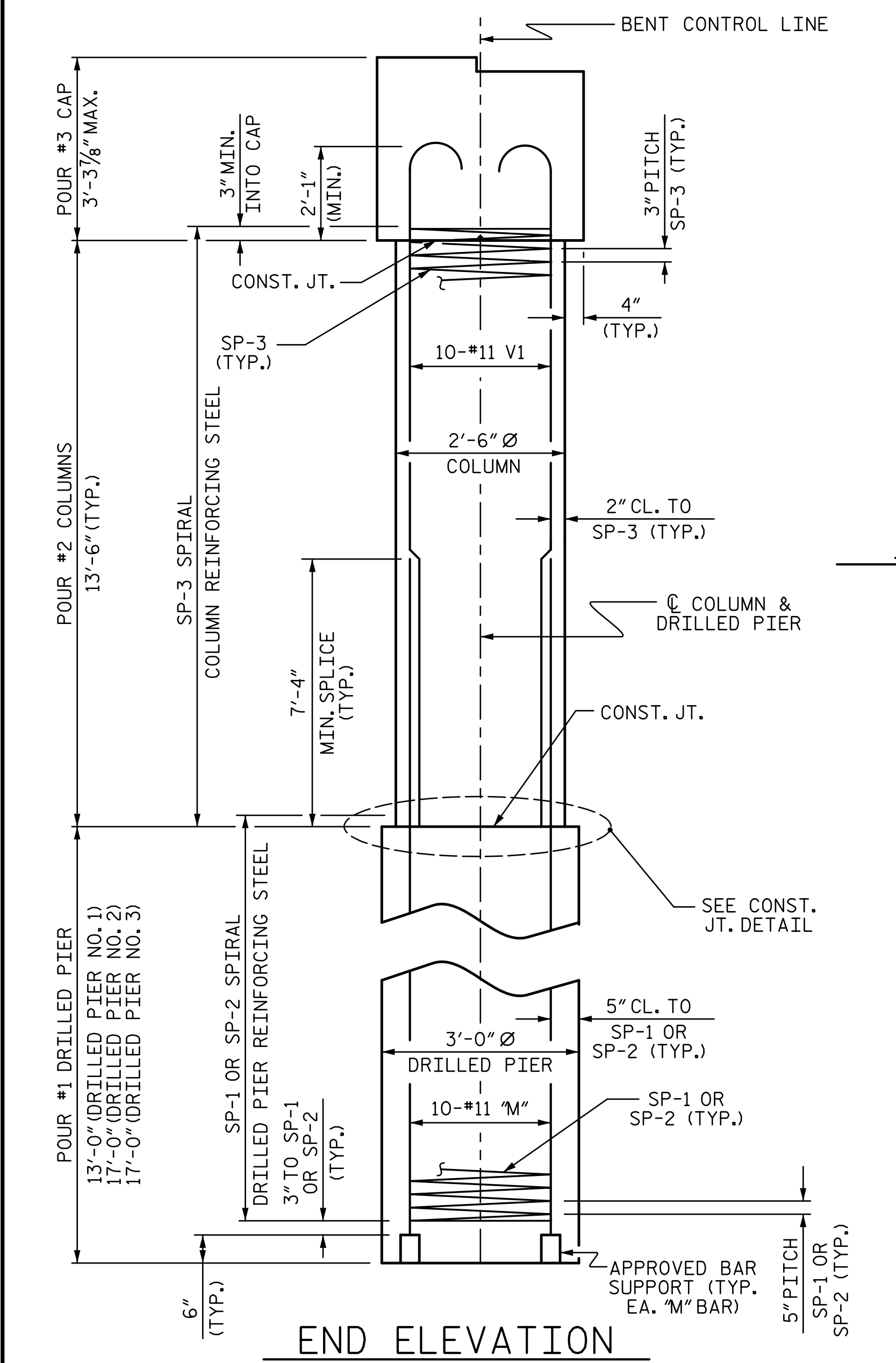


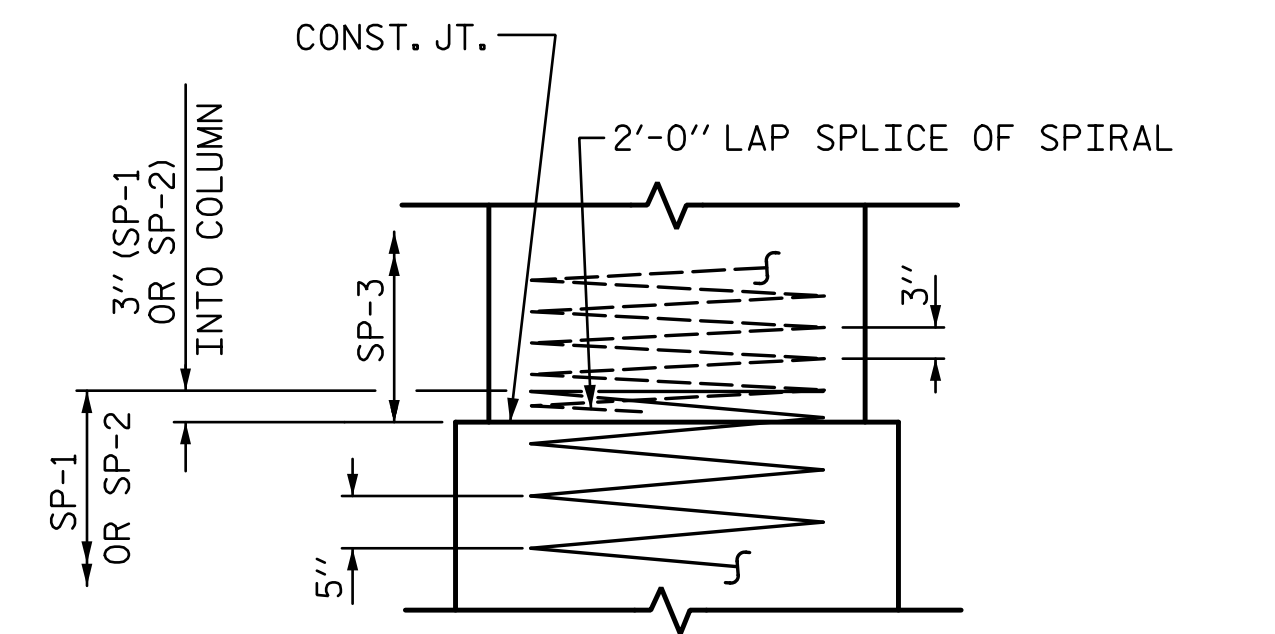
4/14/2020 2:41:57 PM R:\Structures\ustation\Finals\40L033_BR-0124_SML_B2_017_950166.dgn Jones



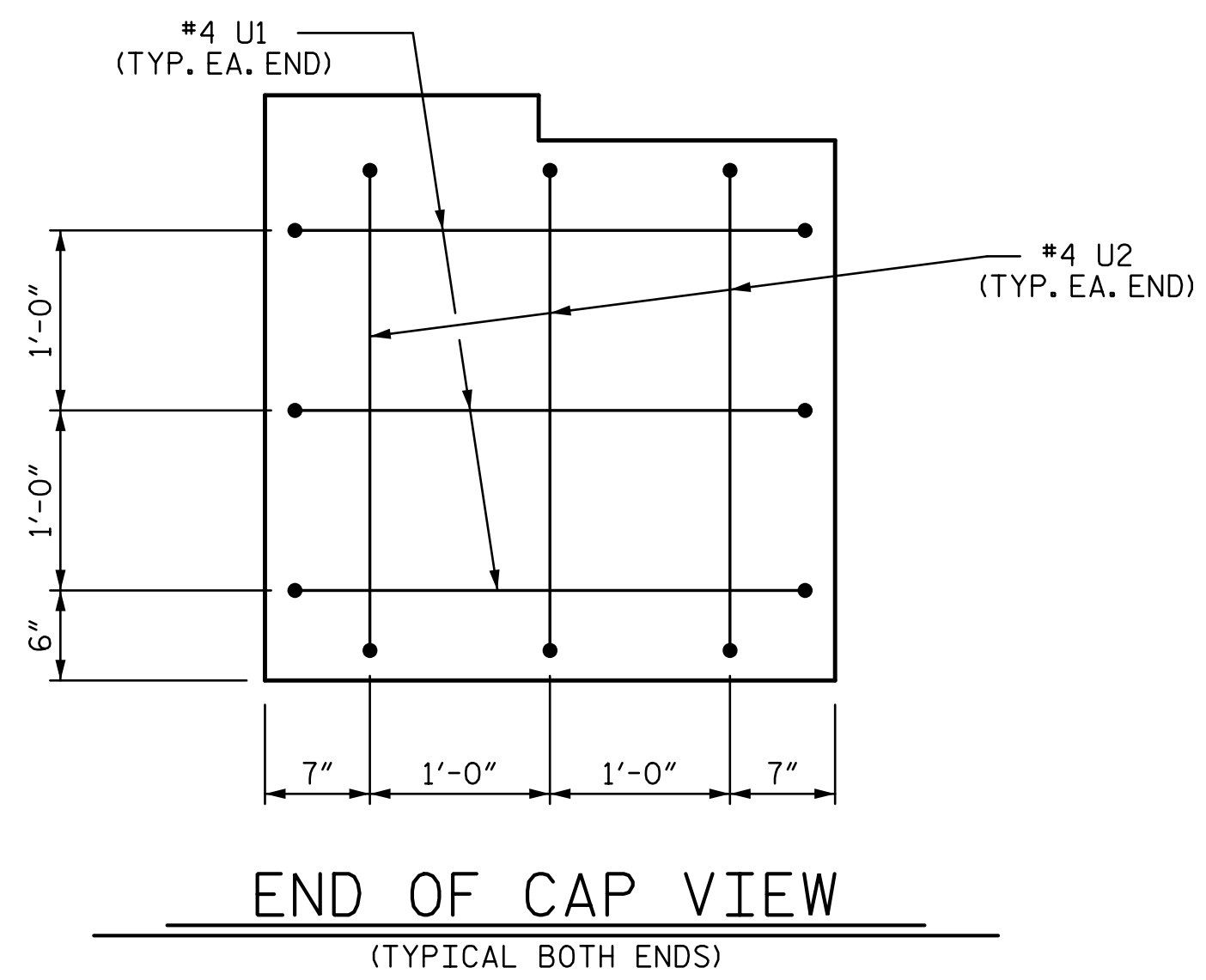
PLAN OF DRILLED PIERS & COLUMNS



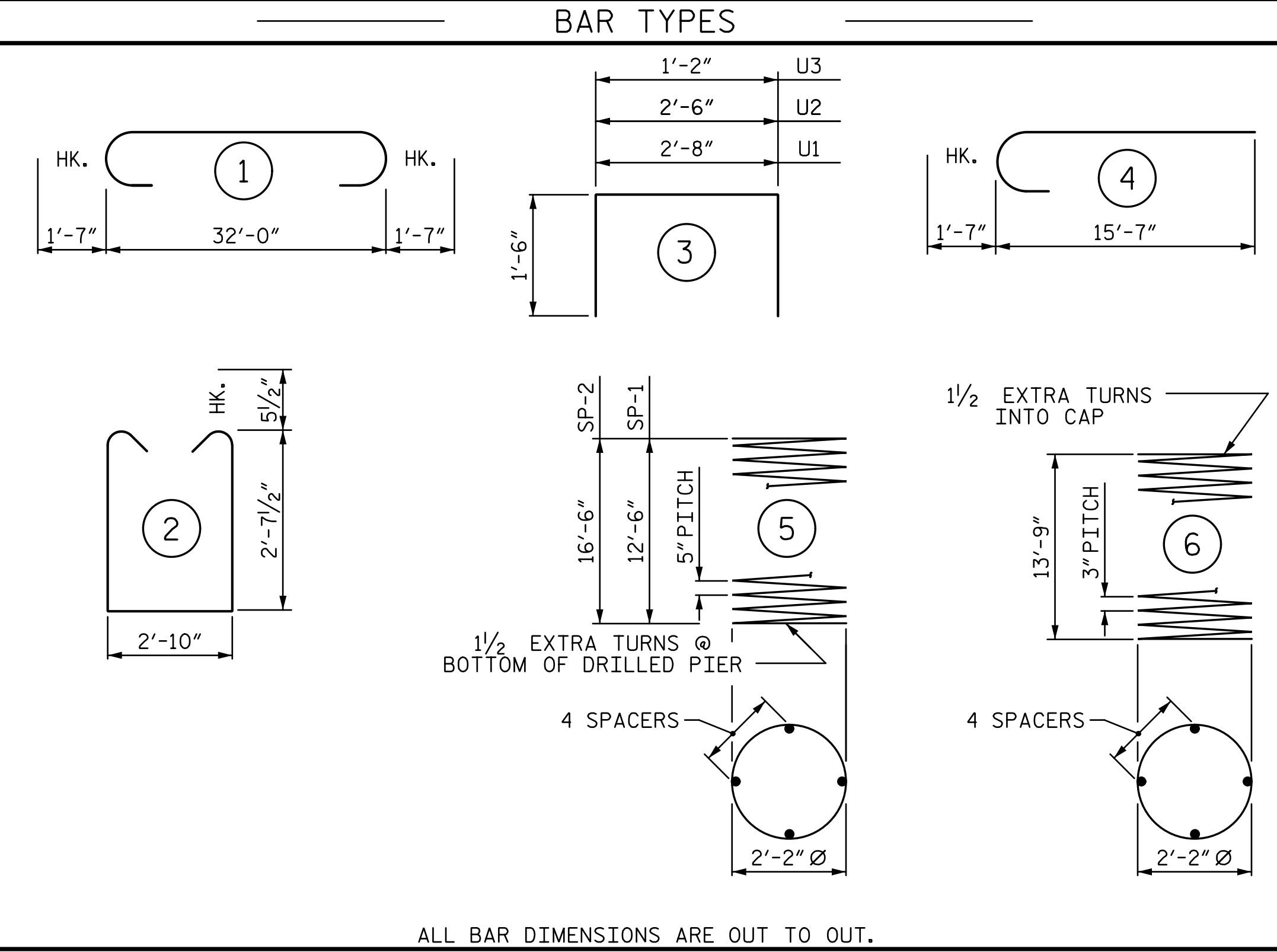
END ELEVATION



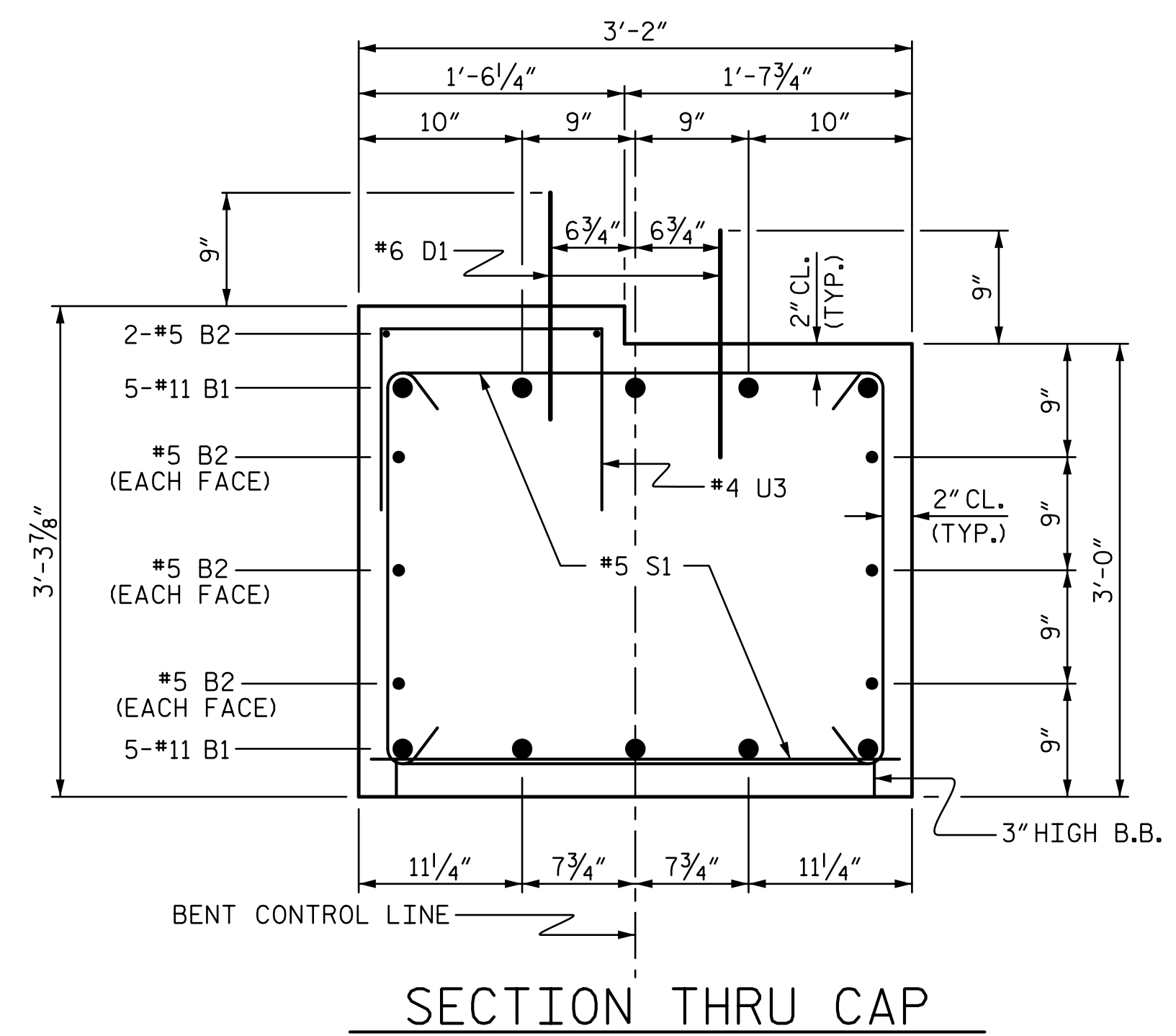
CONSTRUCTION JOINT DETAIL



END OF CAP VIEW
(TYPICAL BOTH ENDS)



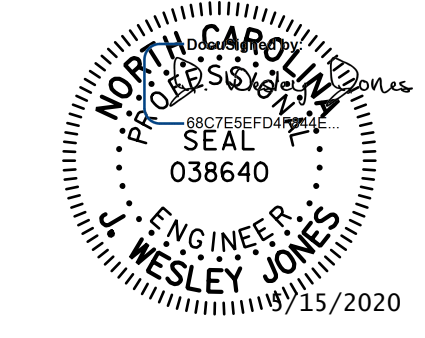
ALL BAR DIMENSIONS ARE OUT TO OUT.



SECTION THRU CAP

BILL OF MATERIAL FOR ONE BENT					
BAR	NO.	SIZE	TYPE	LENGTH	WEIGHT
B1	10	#11	1	35'-2"	1868
B2	8	#5	STR	32'-2"	268
D1	40	#6	STR	1'-6"	90
M1	10	#11	STR	22'-10"	1213
M2	20	#11	STR	26'-10"	2851
S1	52	#5	2	9'-0"	488
U1	6	#4	3	5'-8"	23
U2	6	#4	3	5'-6"	22
U3	32	#4	3	4'-2"	89
V1	30	#11	4	17'-2"	2736
REINFORCING STEEL (FOR ONE BENT)					9648 LBS.
SPIRAL COLUMN REINFORCING STEEL (FOR ONE BENT)					1547 LBS.
* THE SP-1 & SP-2 SPIRAL REINFORCING STEEL SHALL BE W31 OR D-31 COLD DRAWN WIRE OR #5 PLAIN OR DEFORMED BAR					
* THE SP-3 SPIRAL REINFORCING STEEL SHALL BE W20 OR D-20 COLD DRAWN WIRE OR #4 PLAIN OR DEFORMED BAR					
CLASS A CONCRETE BREAKDOWN (FOR ONE BENT)					
POUR #2 (COLUMNS)					7.4 C.Y.
POUR #3 (CAP)					12.1 C.Y.
TOTAL CLASS A CONCRETE					19.5 C.Y.
DRILLED PIERS: (FOR ONE BENT)					
DRILLED PIER CONCRETE					
POUR #1 (DRILLED PIERS)					12.3 C.Y.
3'-0" Ø DRILLED PIER NOT IN SOIL					28.0 LIN. FT.
3'-0" Ø DRILLED PIER IN SOIL					19.0 LIN. FT.
PERMANENT STEEL CASING FOR 3'-0" Ø DRILLED PIER					27.0 LIN. FT.
CSL TUBES					206.0 LIN. FT.

PROJECT NO. BR-0124
WILKES COUNTY
 STATION: 15+07.00 -L-
 SHEET 2 OF 2



STV 100 YEARS
 STV ENGINEERS, INC.
 900 West Trade St., Suite 715
 Charlotte, NC 28202
 NC License Number F-0991

DOCUMENT NOT CONSIDERED FINAL UNLESS ALL SIGNATURES COMPLETED

DRAWN BY : WAW	DATE : 10-19
CHECKED BY : JWJ	DATE : 12-19
DESIGN ENGINEER OF RECORD : JWJ	DATE : 4-20
DRAWN BY : DGE 3/10	REV. 11/14
CHECKED BY : MKT 3/10	MAA/TMG

STATE OF NORTH CAROLINA DEPARTMENT OF TRANSPORTATION RALEIGH					SHEET NO.
SUBSTRUCTURE BENT No. 1					S-17
REVISIONS					TOTAL SHEETS
NO.	BY:	DATE:	NO.	BY:	DATE:
1			3		
2			4		
					21