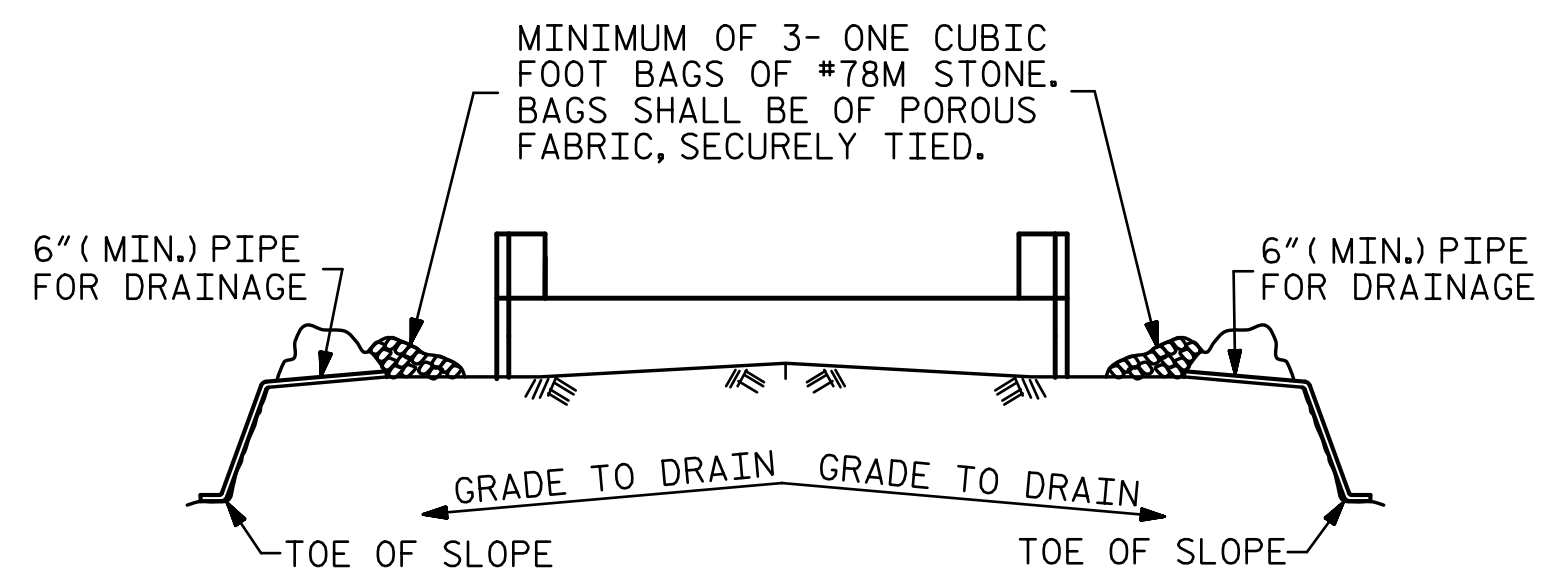


R:\Structures\ustation\Finals\401\_029\_BR-0124\_SML\_E4\_015\_950166.dgn 4/14/2020 2:41:54 PM J Jones

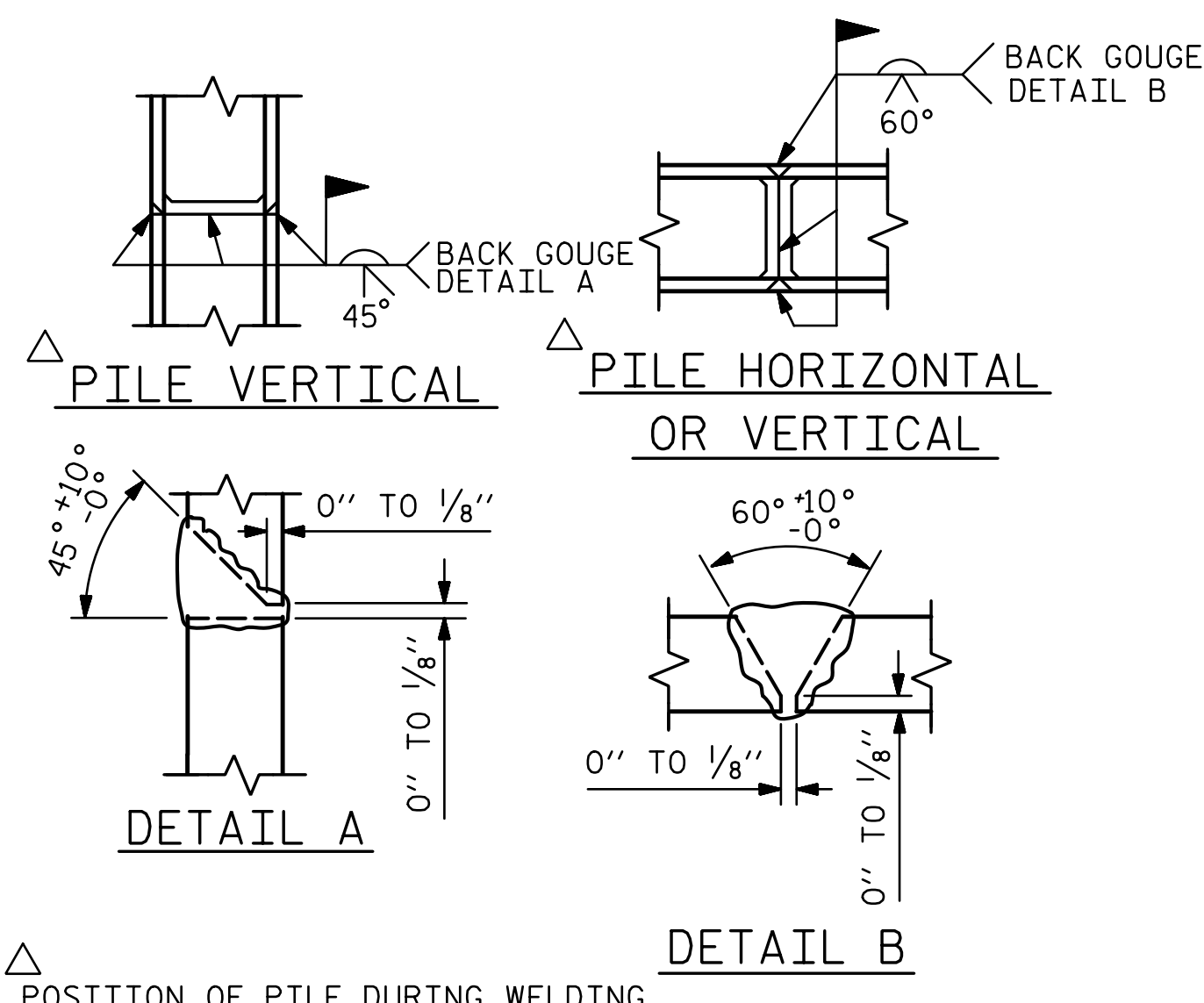


BAGGED STONE AND PIPE SHALL BE PLACED IMMEDIATELY AFTER COMPLETION OF END BENT EXCAVATION. PIPE MAY BE EITHER CONCRETE, CORRUGATED STEEL, CORRUGATED ALUMINUM ALLOY, OR CORRUGATED PLASTIC. PERFORATED PIPE WILL NOT BE ALLOWED.

BAGGED STONE SHALL REMAIN IN PLACE UNTIL THE ENGINEER DIRECTS THAT IT BE REMOVED. THE CONTRACTOR SHALL REMOVE AND DISPOSE OF SILT ACCUMULATIONS AT BAGGED STONE WHEN SO DIRECTED BY THE ENGINEER. BAGS SHALL BE REMOVED AND REPLACED WHENEVER THE ENGINEER DETERMINES THAT THEY HAVE DETERIORATED AND LOST THEIR EFFECTIVENESS.

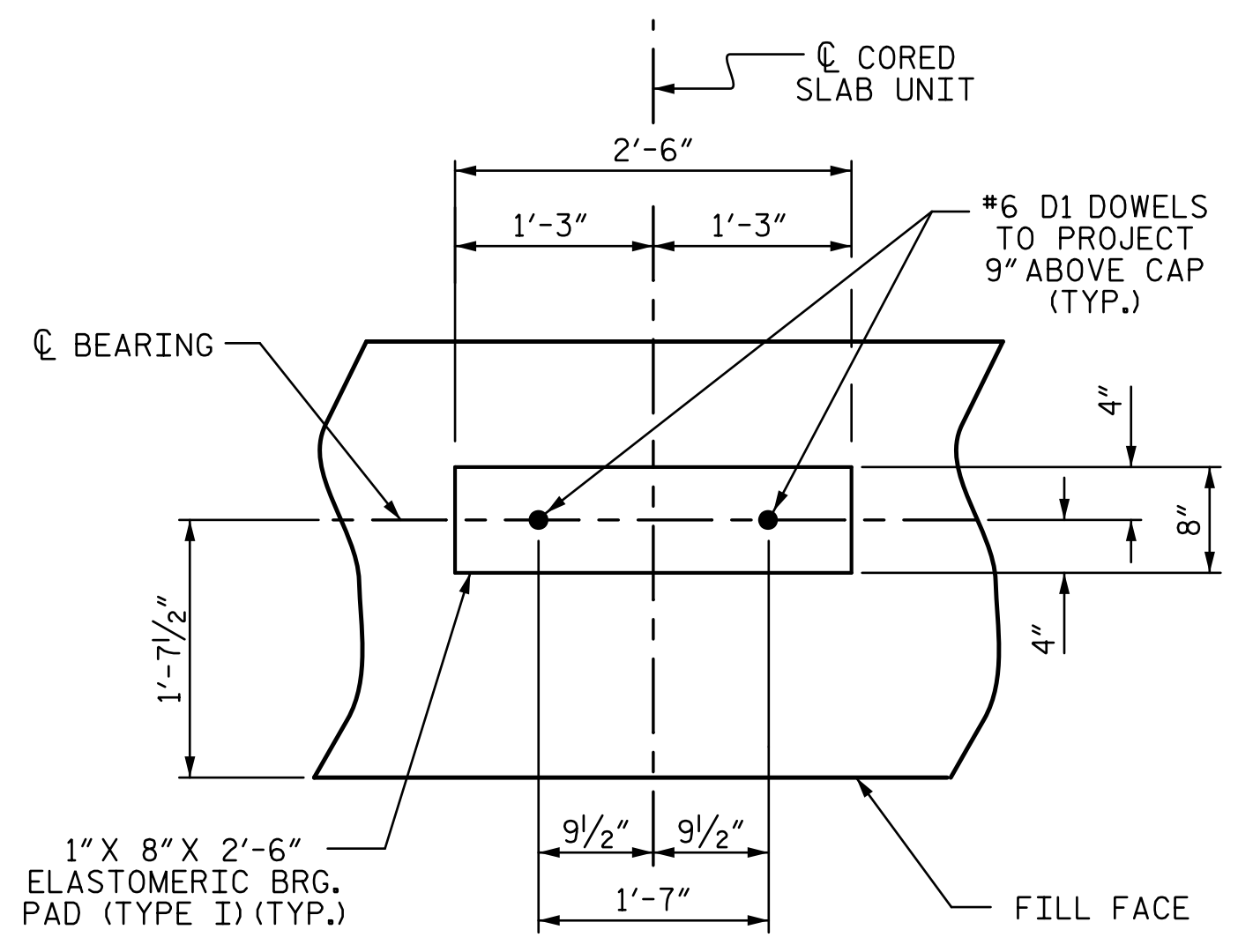
NO SEPARATE PAYMENT WILL BE MADE FOR THIS WORK AND THE ENTIRE COST OF THIS WORK SHALL BE INCLUDED IN THE UNIT CONTRACT PRICE BID FOR THE SEVERAL PAY ITEMS.

### TEMPORARY DRAINAGE AT END BENT



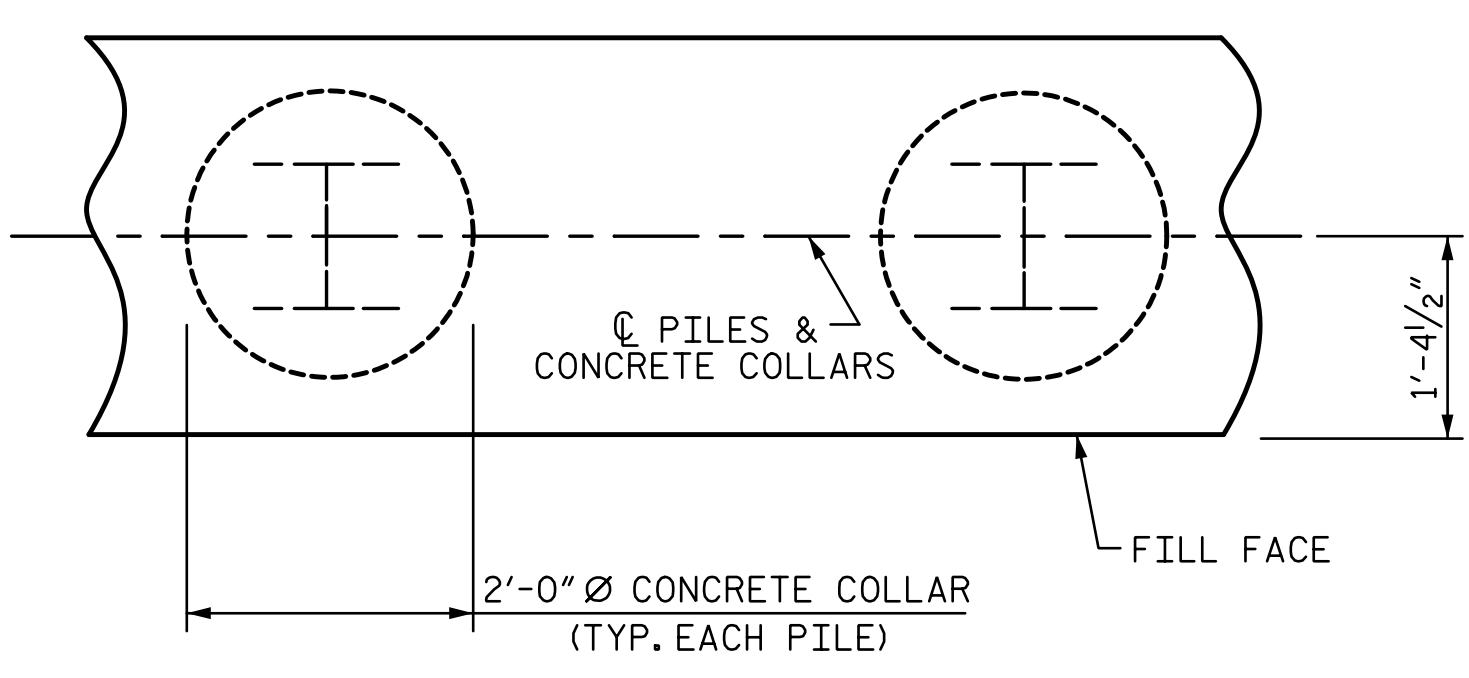
### PILE SPLICE DETAILS

BAR TYPES		BILL OF MATERIAL FOR ONE END BENT					
BAR NO.	SIZE	TYPE	LENGTH	WEIGHT			
B1	#9	1	38'-0"	1034			
B2	#4	STR	19'-1"	357			
B3	#4	STR	2'-5"	15			
D1	#6	STR	1'-6"	45			
H1	#4	2	9'-4"	249			
K1	#4	STR	2'-11"	31			
S1	#4	3	10'-5"	320			
S2	#4	4	3'-2"	97			
S3	#4	5	6'-6"	87			
V1	#4	STR	6'-2"	214			
REINFORCING STEEL (FOR ONE END BENT)				2449 LBS.			
CLASS A CONCRETE BREAKDOWN (FOR ONE END BENT)							
POUR #1	CAP, LOWER PART OF WINGS & COLLARS			17.9 C.Y.			
POUR #2	UPPER PART OF WINGS			2.1 C.Y.			
TOTAL CLASS A CONCRETE				20.0 C.Y.			

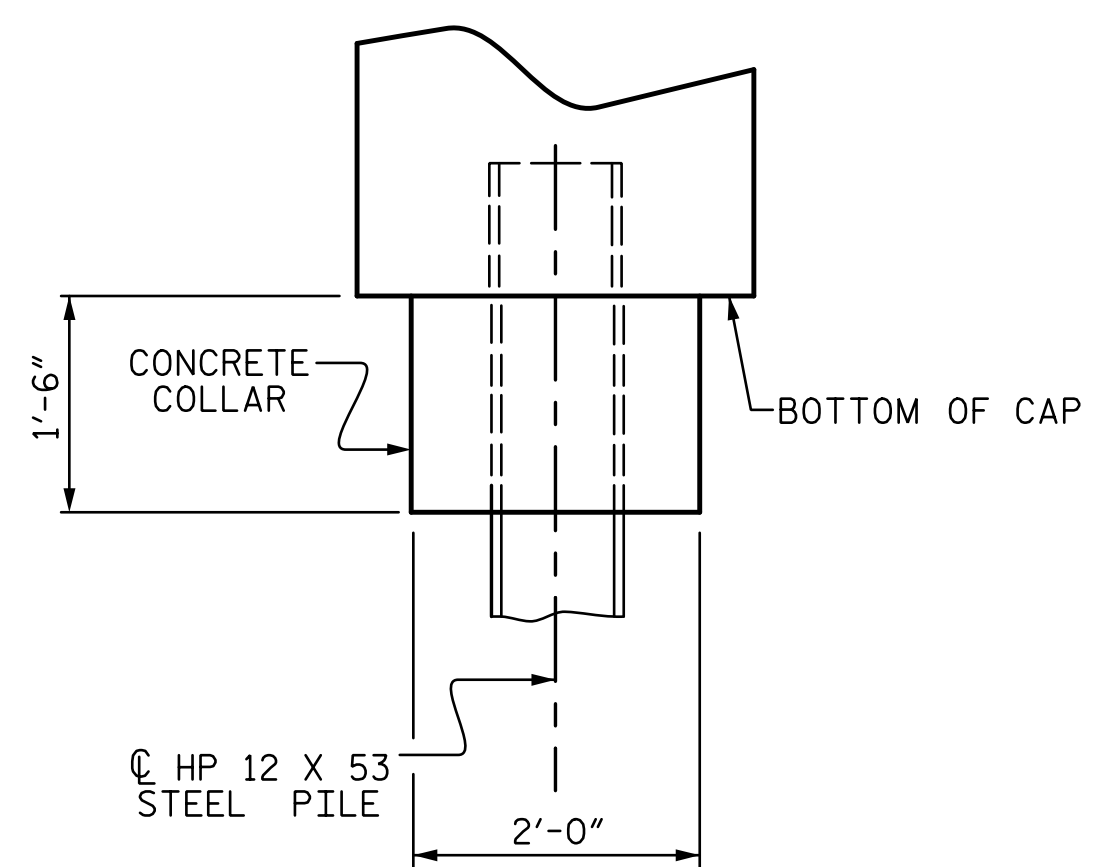


### DETAIL "A"

(END BENT No. 1 SHOWN, END BENT No. 2 SIMILAR BY ROTATION)



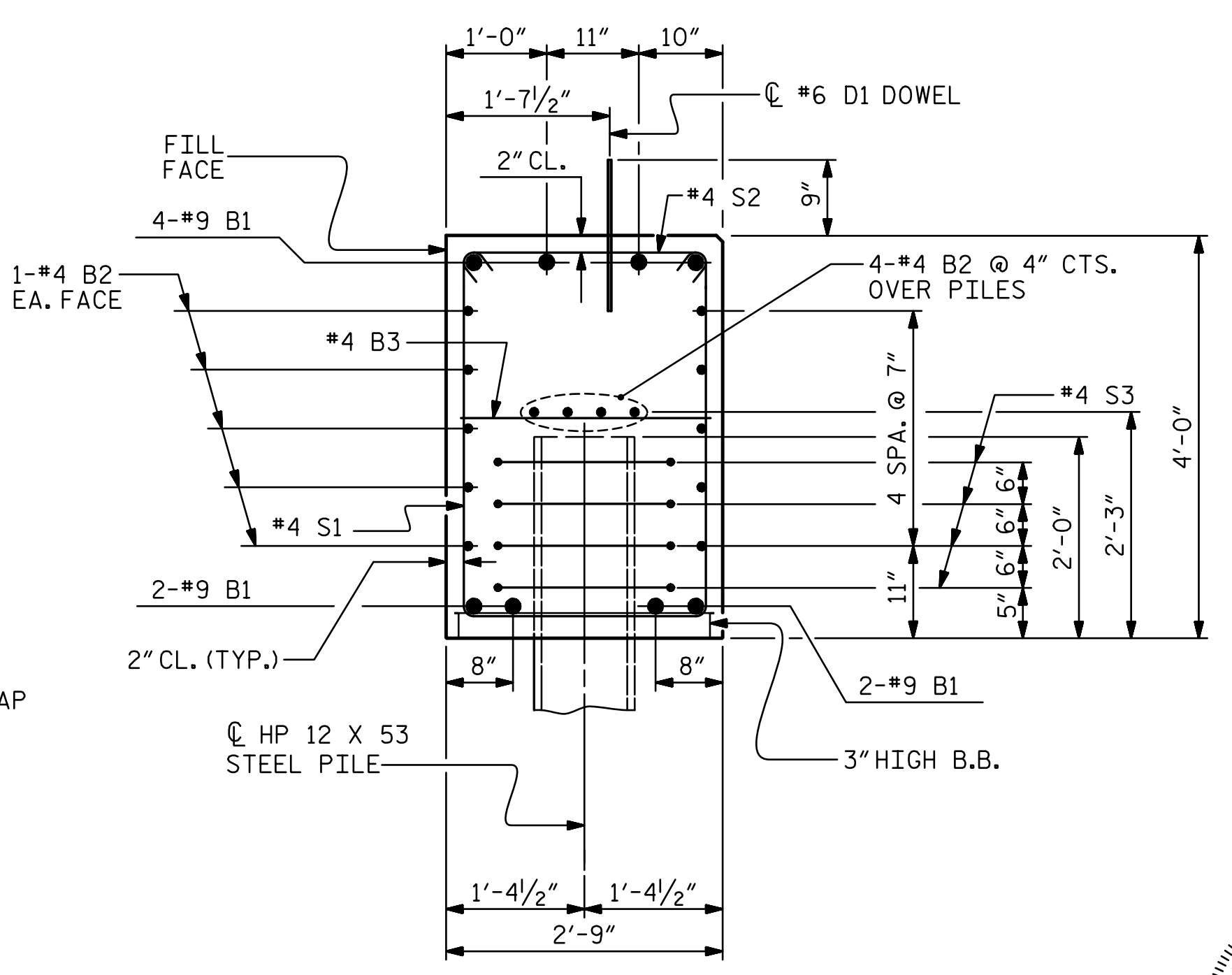
### PLAN



### ELEVATION

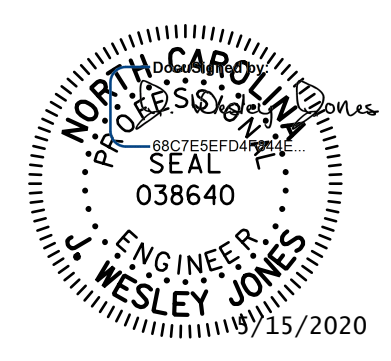
### CORROSION PROTECTION FOR STEEL PILES DETAIL

(END BENT No. 1 SHOWN, END BENT No. 2 SIMILAR BY ROTATION)



### SECTION A-A

(CONCRETE COLLAR NOT SHOWN FOR CLARITY. SEE "CORROSION PROTECTION FOR STEEL PILES DETAIL.")



PROJECT NO. BR-0124

WILKES COUNTY

STATION: 15+07.00 -L-

SHEET 4 OF 4

STATE OF NORTH CAROLINA  
DEPARTMENT OF TRANSPORTATION  
RALEIGH

SUBSTRUCTURE  
END BENT No. 1 & 2  
DETAILS

DRAWN BY : WAW	DATE : 10-19
CHECKED BY : JWJ	DATE : 12-19
DESIGN ENGINEER OF RECORD : JWJ	DATE : 4-20
DRAWN BY : WJH 12/11	REV. 4/17
CHECKED BY : AAC 12/11	MAA/THC

**STV** 100 YEARS  
STV ENGINEERS, INC.  
900 West Trade St., Suite 715  
Charlotte, NC 28202  
NC License Number F-0991

DOCUMENT NOT CONSIDERED FINAL UNLESS ALL SIGNATURES COMPLETED

REVISIONS				SHEET NO.
NO.	BY:	DATE:	NO.	DATE:
1			3	
2			4	

TOTAL SHEETS 21