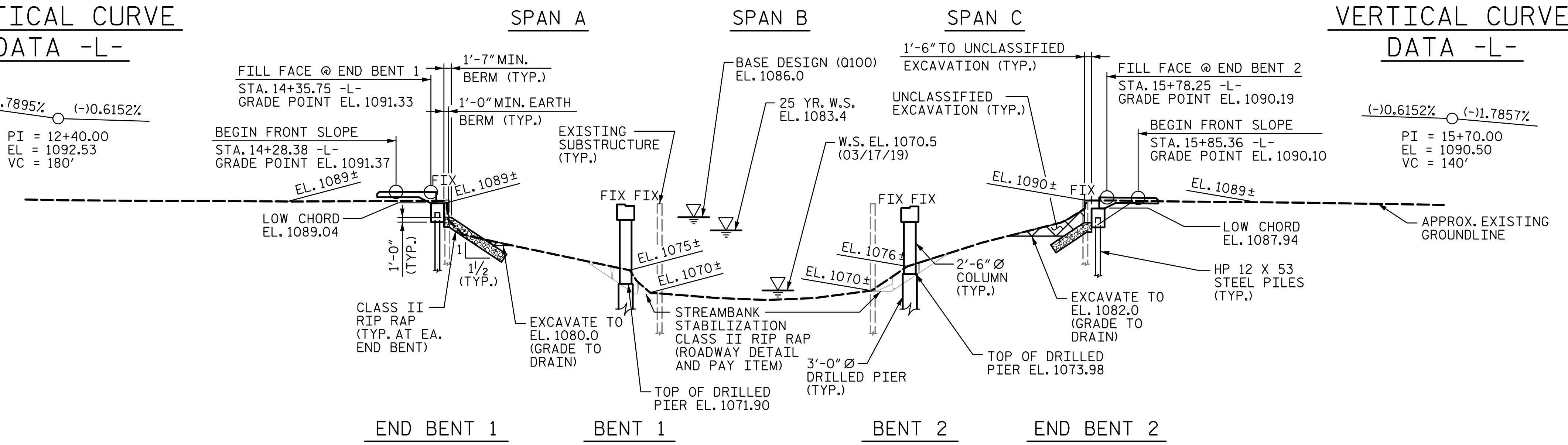


VERTICAL CURVE DATA -L-

$(-)-2.7895\%$ $(-)-0.6152\%$
 PI = 12+40.00
 EL = 1092.53
 VC = 180'

VERTICAL CURVE DATA -L-

$(-)-0.6152\%$ $(-)-1.7857\%$
 PI = 15+70.00
 EL = 1090.50
 VC = 140'



SECTION ALONG -L-

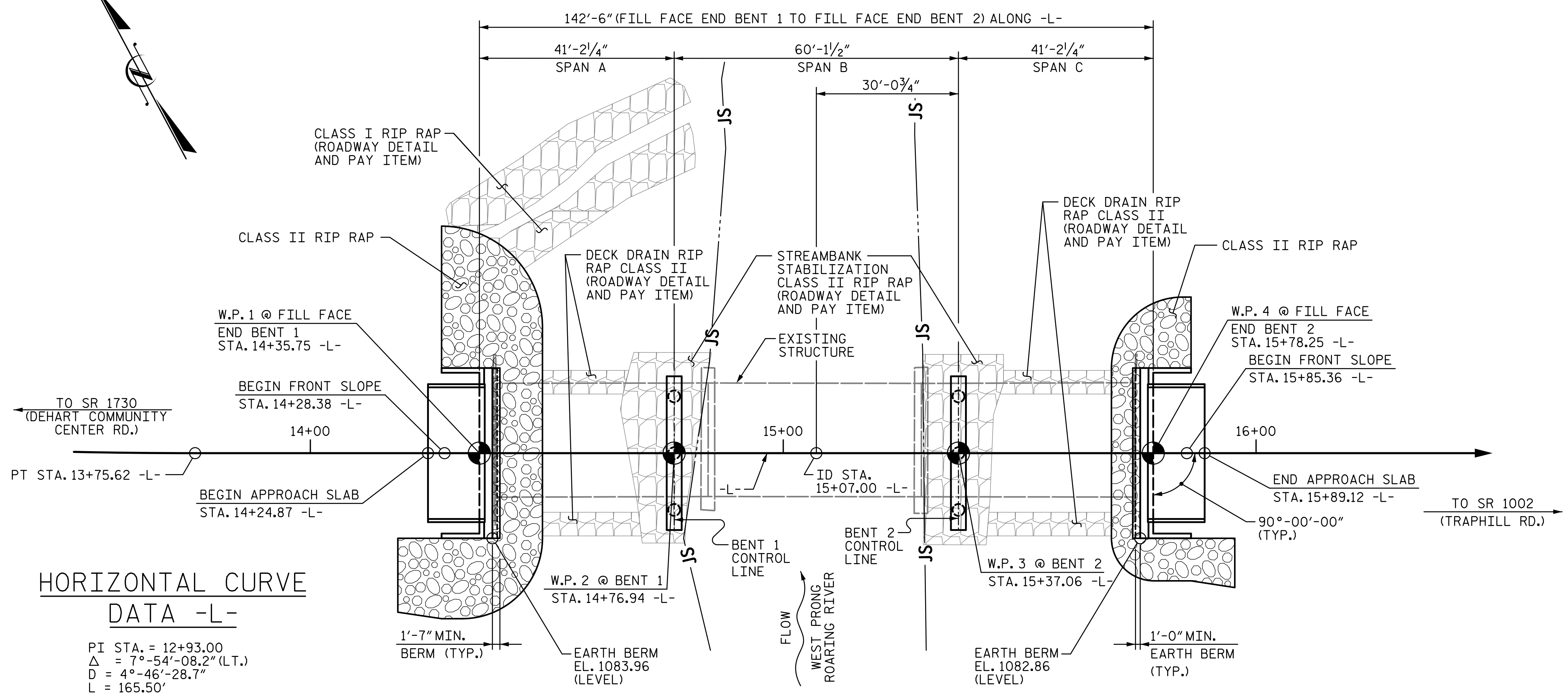
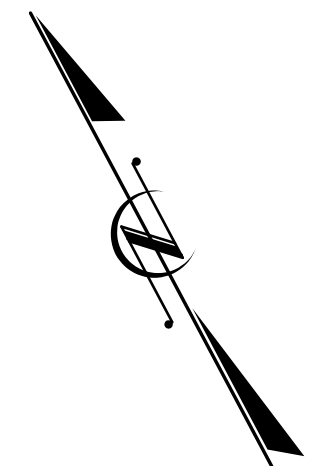
HYDRAULIC DATA

DESIGN DISCHARGE: 6900 CFS
 FREQUENCY OF DESIGN FLOOD: 25 YRS.
 DESIGN HIGH WATER ELEVATION: 1083.4
 DRAINAGE AREA: 23.0 SQ. MI.
 BASE DISCHARGE (Q100): 11000 CFS
 BASE HIGH WATER ELEVATION: 1086.0

OVERTOPPING DATA

OVERTOPPING DISCHARGE: 13400 CFS
 FREQUENCY OF OVERTOPPING: 100+ YRS.
 OVERTOPPING FLOOD ELEVATION: 1088.5
 OVERTOPS @ STA. 17+80.00 -L-
 PROPOSED ROADWAY ☺

I HEREBY CERTIFY THESE PLANS ARE THE AS-BUILT PLANS



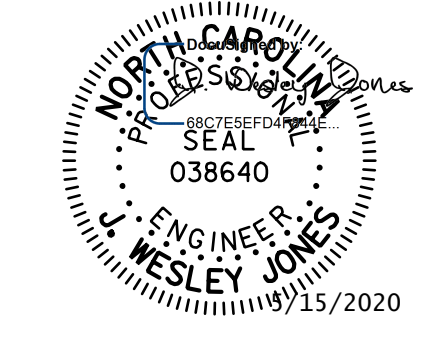
PLAN

(STEEL PILES NOT SHOWN FOR CLARITY)

HORIZONTAL CURVE DATA -L-

PI STA. = 12+93.00
 $\Delta = 7^\circ-54'-08.2"$ (LT.)
 $D = 4^\circ-46'-28.7"$
 $L = 165.50'$
 $T = 82.88'$
 $R = 1,200.00'$

PROJECT NO. BR-0124
WILKES COUNTY
 STATION: 15+07.00 -L-
 SHEET 1 OF 2 REPLACES BRIDGE NO. 166



STV 100 YEARS
 STV ENGINEERS, INC.
 900 West Trade St., Suite 715
 Charlotte, NC 28202
 NC License Number F-0991

DOCUMENT NOT CONSIDERED FINAL UNLESS ALL SIGNATURES COMPLETED

STATE OF NORTH CAROLINA
 DEPARTMENT OF TRANSPORTATION
 RALEIGH
GENERAL DRAWING
 FOR BRIDGE ON SR 1745
 (SHUMATE MOUNTAIN RD.) OVER
 WEST PRONG ROARING RIVER
 BETWEEN SR 1730 AND SR 1002

REVISIONS				SHEET NO.
NO.	BY:	DATE:	NO.	DATE:
1			3	
2			4	

S-1
TOTAL SHEETS 21

R:\Structures\ustation\Finals\40L\00L\BR-0124_SMU_GDL_001_950166.dgn
 9:43:25 AM
 5/1/2020
 Jones

DRAWN BY : LAH DATE : 9-19
 CHECKED BY : JWJ DATE : 12-19
 DESIGN ENGINEER OF RECORD : JWJ DATE : 4-20