

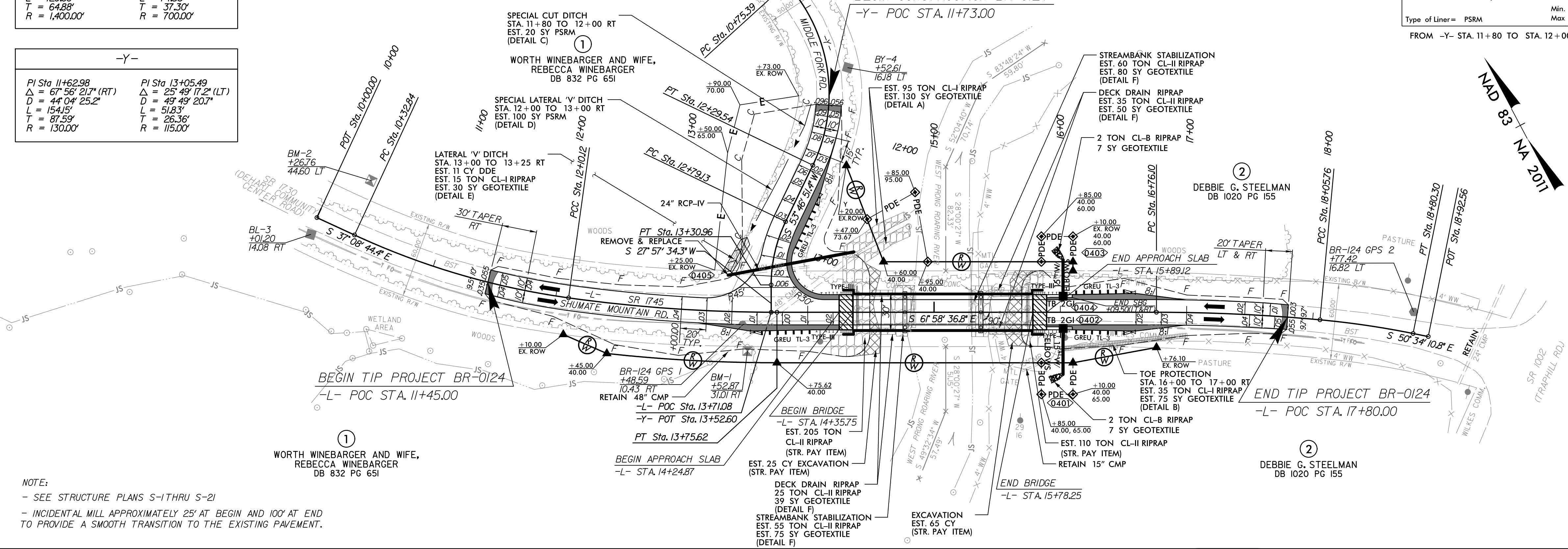
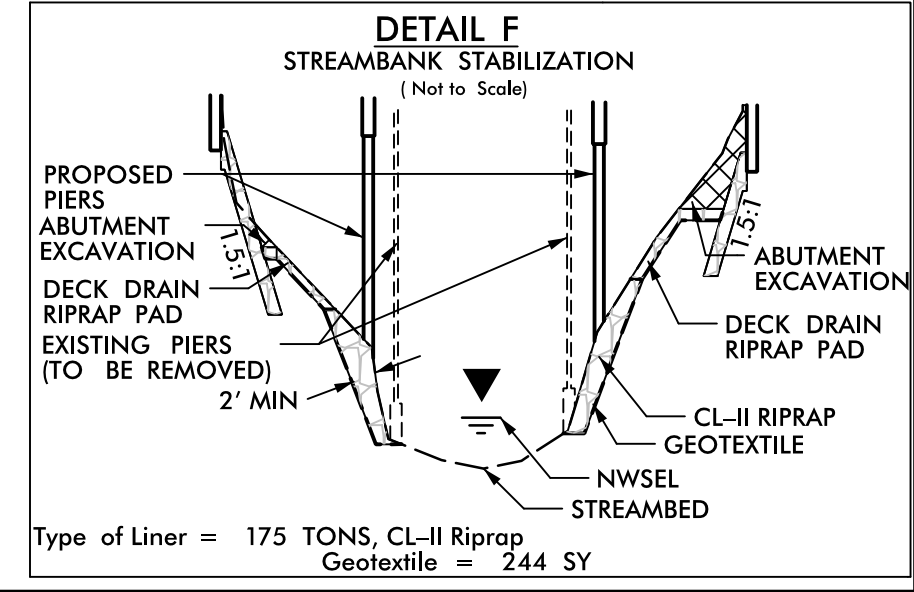
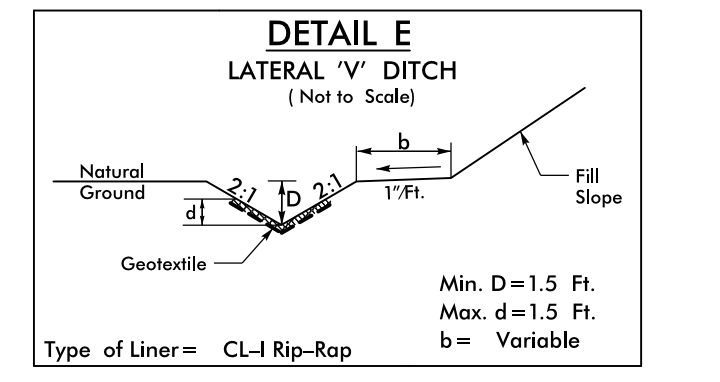
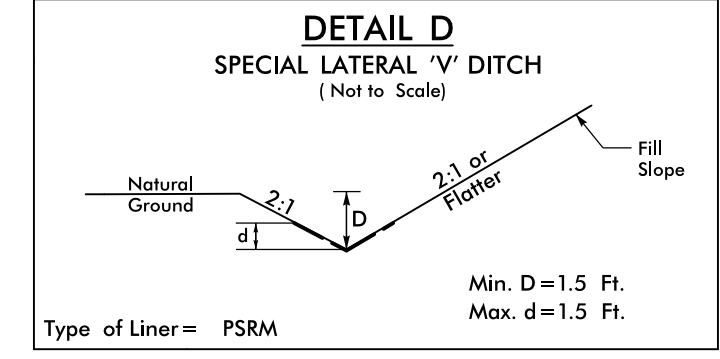
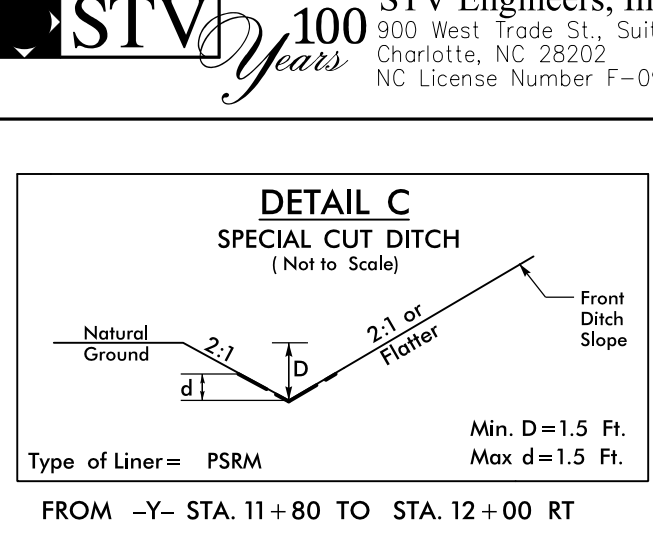
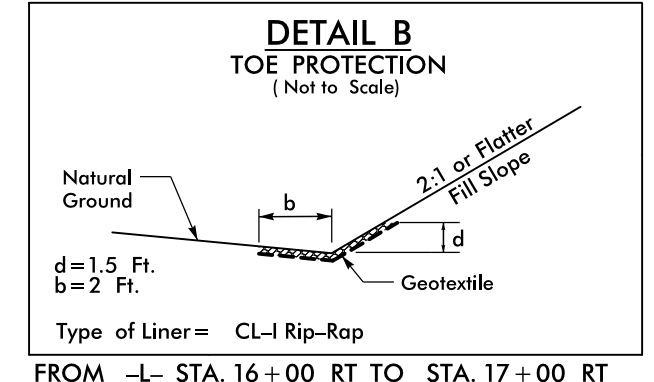
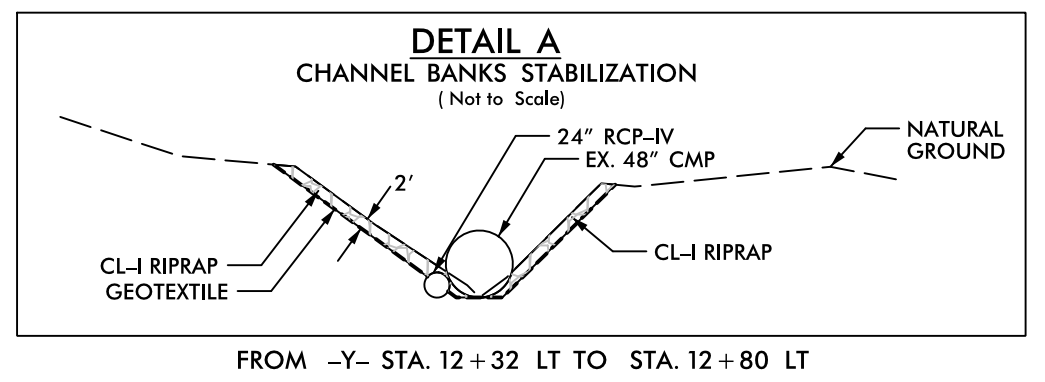
8/17/19

**-L-**

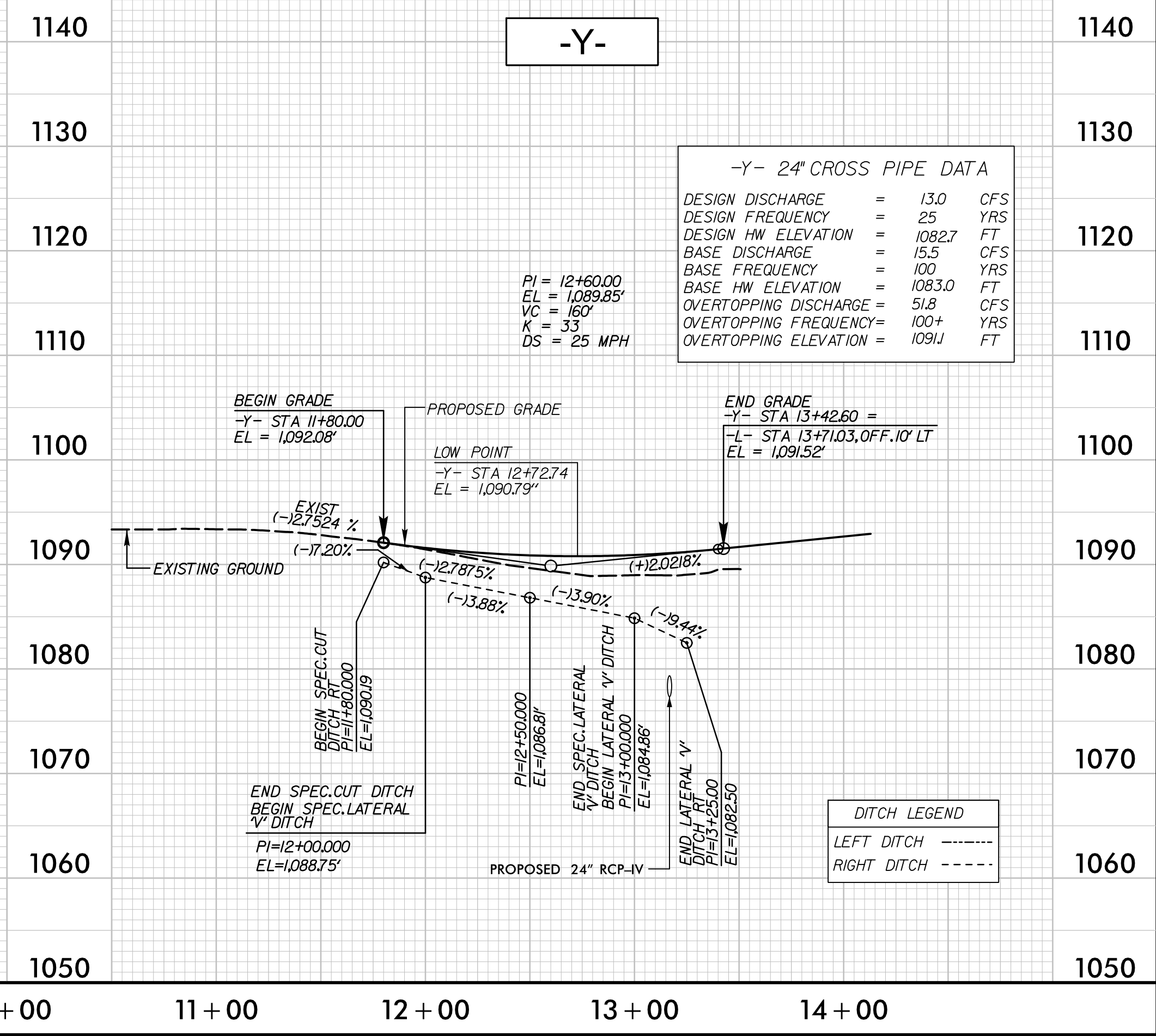
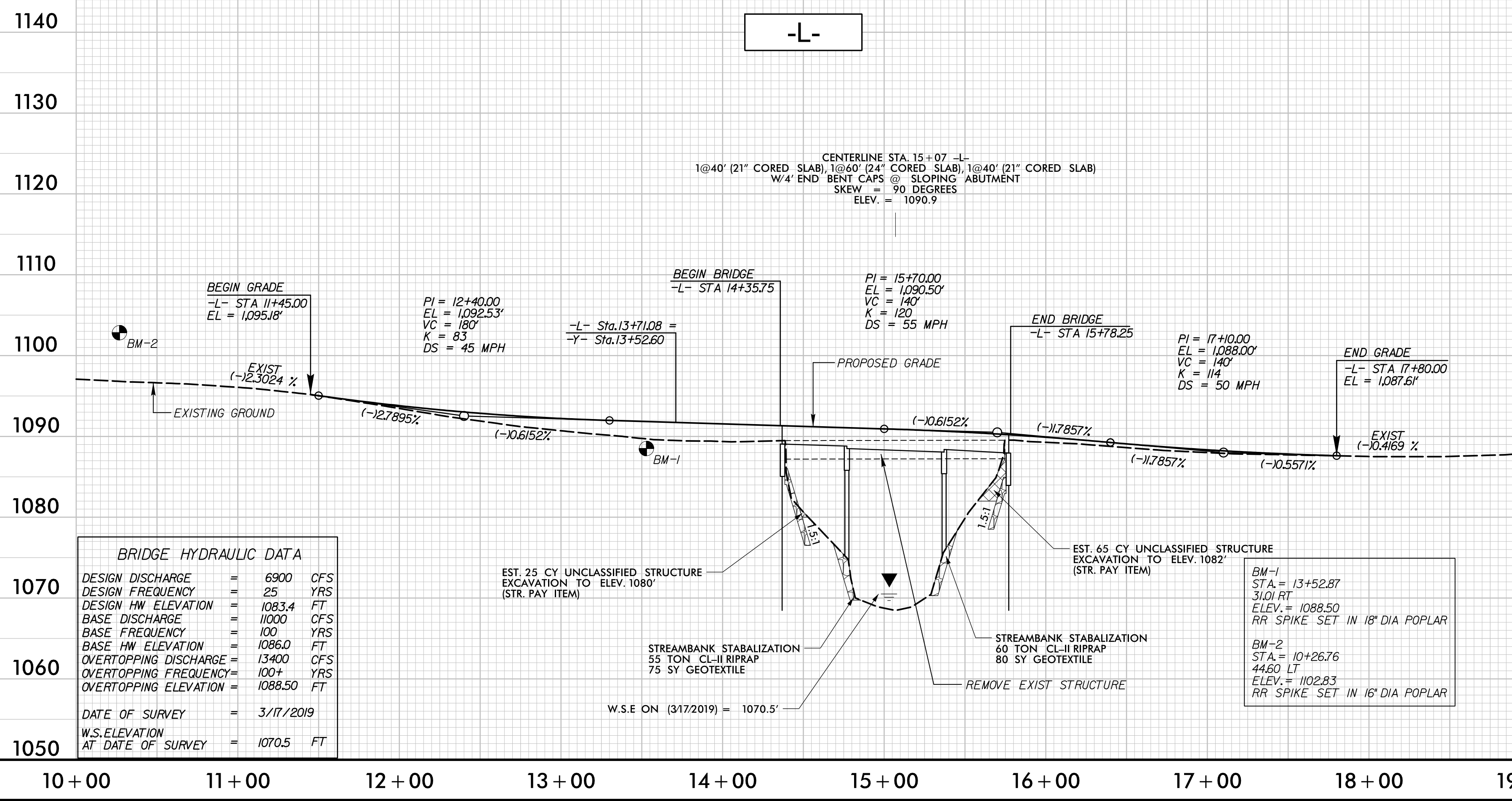
PI Sta 11+221.3 Δ = 16° 55' 44.2" (LT) D = 9' 32' 57.5" L = 177.28' T = 89.29' R = 600.00'	PI Sta 12+93.00 Δ = 7° 54' 08.2" (LT) D = 4' 46' 28.7" L = 165.50' T = 82.88' R = 1,200.00'
PI Sta 17+40.98 Δ = 5° 18' 23.2" (RT) D = 4' 05' 33.2" L = 129.66' T = 64.98' R = 1,400.00'	PI Sta 18+43.07 Δ = 6° 06' 02.7" (RT) D = 8' 11' 06.4" L = 74.53' T = 37.30' R = 700.00'

**-Y-**

PI Sta 11+62.98 Δ = 67° 56' 21.7" (RT) D = 44' 04' 25.2" L = 154.15' T = 87.59' R = 130.00'	PI Sta 13+05.49 Δ = 25° 49' 17.2" (LT) D = 49' 49' 20.7" L = 51.83' T = 26.36' R = 115.00'
--	---



NOTE:  
- SEE STRUCTURE PLANS S-1 THRU S-21  
- INCIDENTAL MILL APPROXIMATELY 25' AT BEGIN AND 100' AT END TO PROVIDE A SMOOTH TRANSITION TO THE EXISTING PAVEMENT.



**-Y- 24" CROSS PIPE DATA**

DESIGN DISCHARGE	=	13.0	CFS
DESIGN FREQUENCY	=	25	YRS
DESIGN HW ELEVATION	=	1082.7	FT
BASE DISCHARGE	=	15.5	CFS
BASE FREQUENCY	=	100	YRS
BASE HW ELEVATION	=	1083.0	FT
OVERTOPPING DISCHARGE	=	51.8	CFS
OVERTOPPING FREQUENCY	=	100+	YRS
OVERTOPPING ELEVATION	=	1091.1	FT

**BRIDGE HYDRAULIC DATA**

DESIGN DISCHARGE	=	6900	CFS
DESIGN FREQUENCY	=	25	YRS
DESIGN HW ELEVATION	=	1083.4	FT
BASE DISCHARGE	=	11000	CFS
BASE FREQUENCY	=	100	YRS
BASE HW ELEVATION	=	1086.0	FT
OVERTOPPING DISCHARGE	=	13400	CFS
OVERTOPPING FREQUENCY	=	100+	YRS
OVERTOPPING ELEVATION	=	1088.50	FT

**DITCH LEGEND**

LEFT DITCH	-----
RIGHT DITCH	-----

8/17/2020  
K:\Projects\2020\BR-0124\BR-0124\_rdy\_psh04.dgn