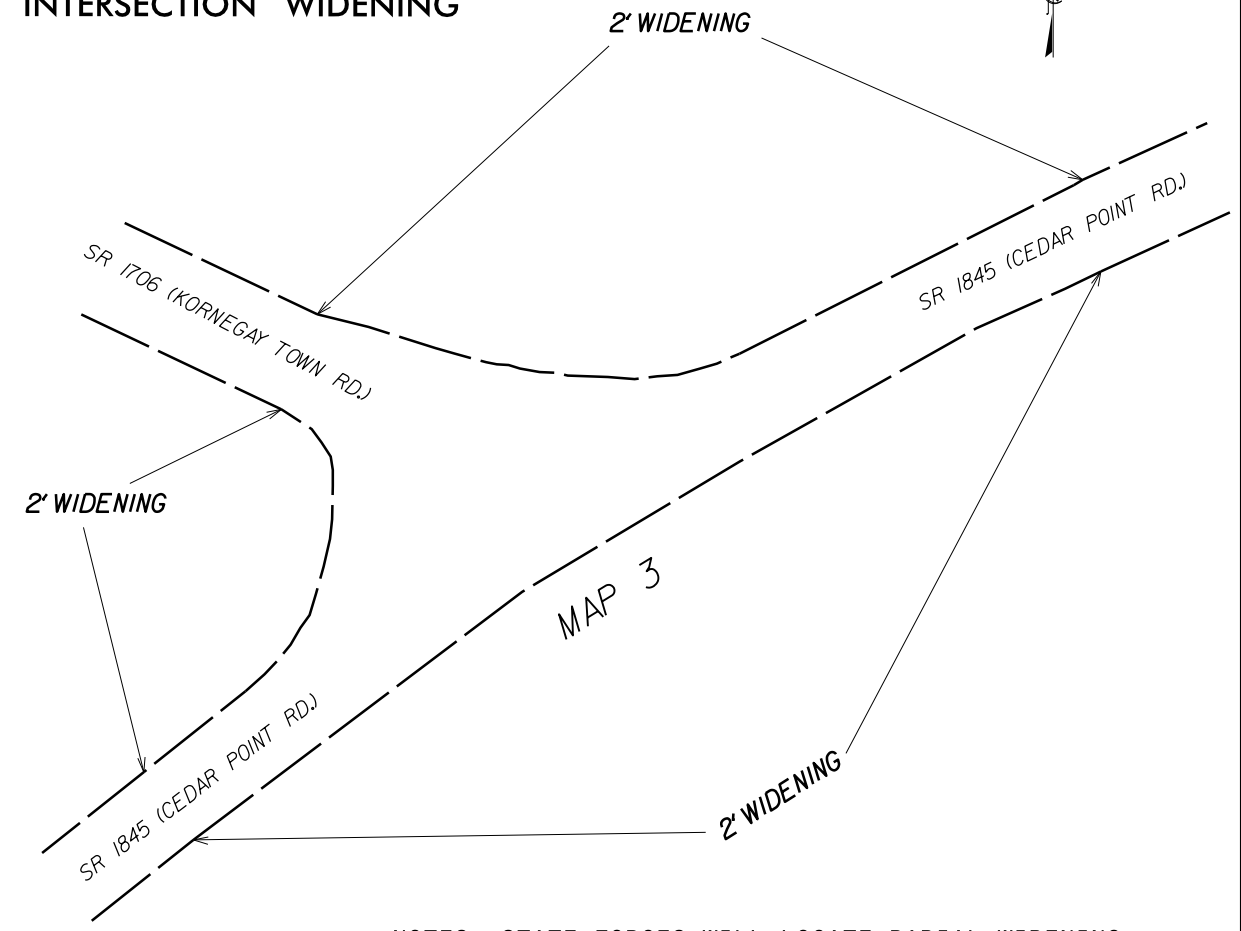


**MAP 3:
SR 1845 (CEDAR POINT RD.)
INTERSECTION WIDENING**



NOTES: STATE FORCES WILL LOCATE RADIAL WIDENING.

MAP N.T.S.

**MAP 3:
SR 1845 (CEDAR POINT RD.)
MP 0.33 – MP 0.37
SEE ALSO TYPICAL NO. 2**

2018 ROADWAY ENGLISH STANDARD DRAWINGS EFF.01-16-2018
REV.

The following Roadway Standards as appear in "Roadway Standard Drawings" Highway Design Branch – N.C. Department of Transportation – Raleigh, N.C., Dated January, 2018 are applicable to this project and by reference hereby are considered a part of these plans:

STD.NO.	TITLE
DIVISION 12	PVMT MARKING, MARKERS AND DELINEATION
1205.08	Pavement Markings – Symbols & Word Messages

REVISIONS

28-OCT-2020 10:01
 S:\Division of Resurfacing\Resurfacing Data\2021\Resurfacing\SAMPSON\RALEIGH_REVISIONS\NEW_TYPICALS\Sampson_B - Typical.dgn
 \$\$\$USERNAME\$\$\$