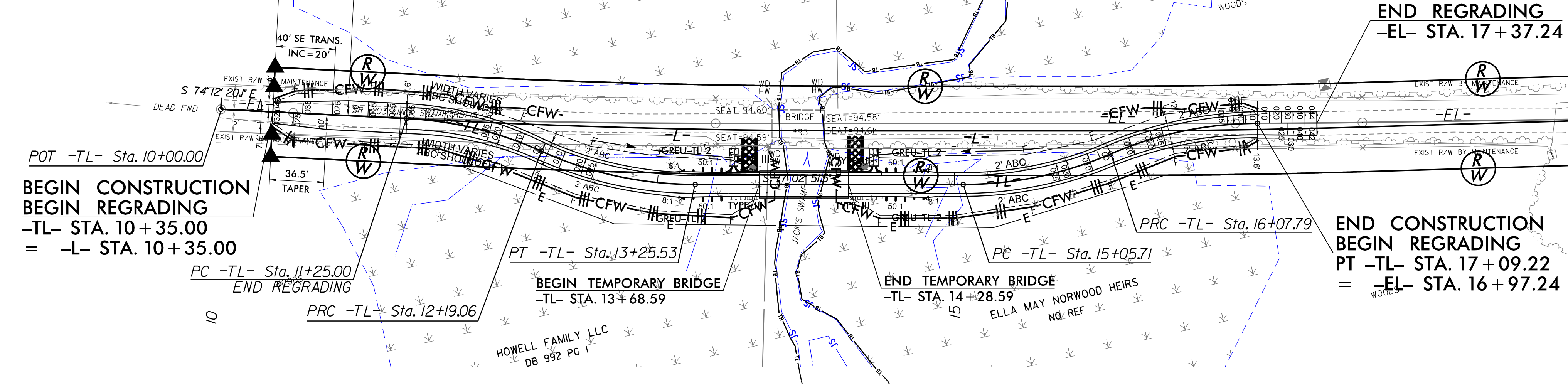


BRIDGE NO. 650093

NOTES: 1. THE CONTRACTOR SHALL INSTALL SPECIAL SEDIMENT CONTROL FENCE OR WATTLES IN LOW AREAS OF SILT FENCE AND UNDER THE BRIDGE, AS NEEDED OR DIRECTED BY THE ENGINEER.
 2. THE OUTSIDE BUFFER WETLAND OR WATER BOUNDARY SHALL BE CLEARLY MARKED BY HIGHLY VISIBLE FENCING (ORANGE SAFETY FENCE)
 3. IMPERVIOUS DIKE MAY BE MODIFIED AND/OR ELIMINATED AS DIRECTED.

-TL-
 PI Sta 11+72.60 Δ = 21° 33' 25.0" (RT) D = 22° 55' 05.9" L = 94.06' T = 47.59' R = 250.00' e = NC
 PI Sta 15+57.47 Δ = 23° 23' 40.3" (LT) D = 22° 55' 05.9" L = 102.08' T = 51.76' R = 250.00' e = RC
 PI Sta 12+73.11 Δ = 24° 23' 56.4" (LT) D = 22° 55' 05.9" L = 106.46' T = 54.05' R = 250.00' e = RC
 PI Sta 16+59.21 Δ = 23° 14' 41.3" (RT) D = 22° 55' 05.9" L = 101.42' T = 51.42' R = 250.00' e = NC



-TL- ONSITE DETOUR (OVER JACK'S SWAMP)



REVISIONS

12-FEB-2020 14:23 G:\4201726\XX_S\U-Build Grant\BR-0118.D1-Nor-thempton_93\Hydro\ulica\CADD\EROSION_CONTROL\BR-0118_EC_psb_Detour.dgn
 8/17/99
 KCA07/3