


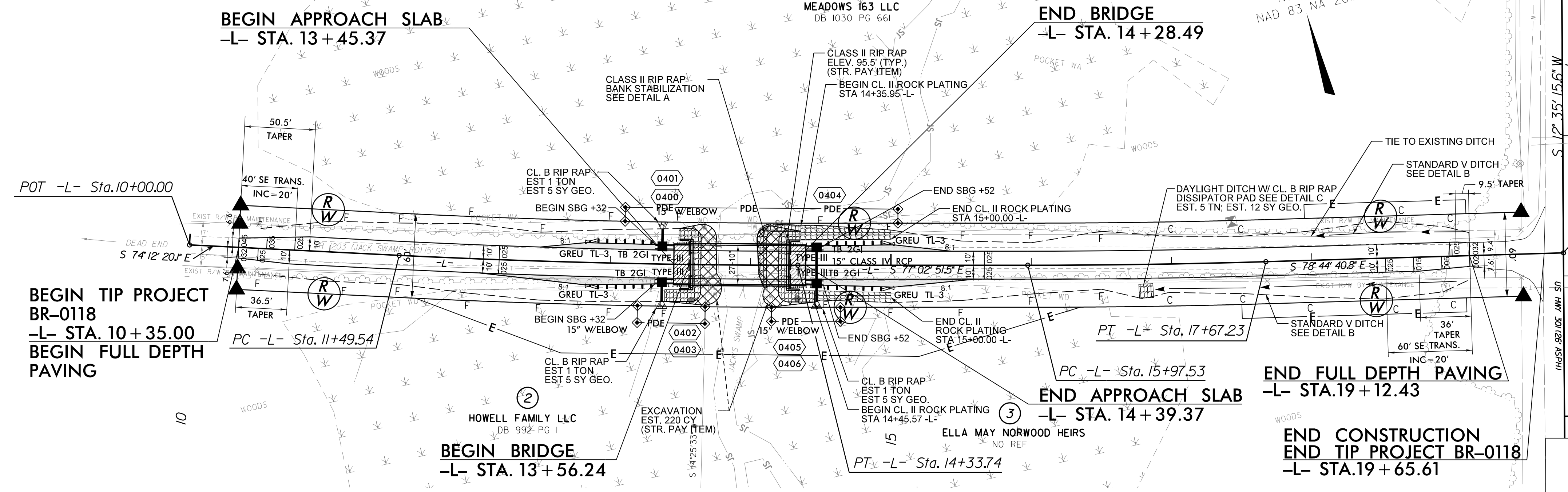
8/17/19

BRIDGE NO. 650093

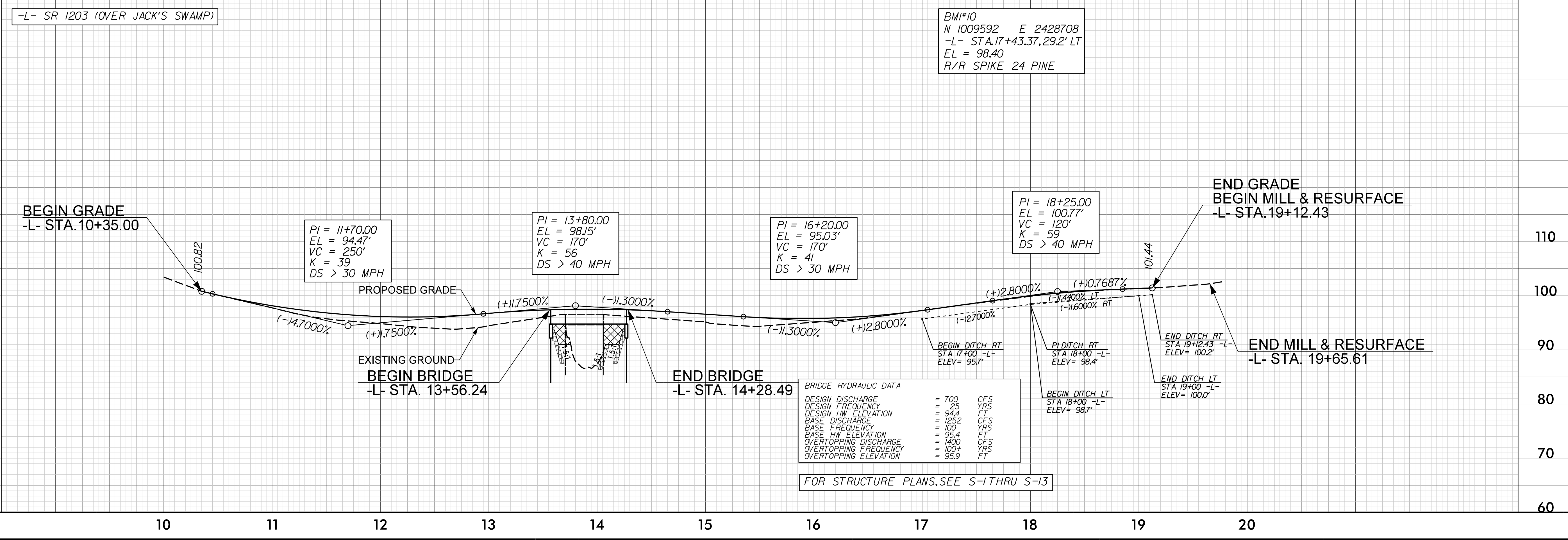
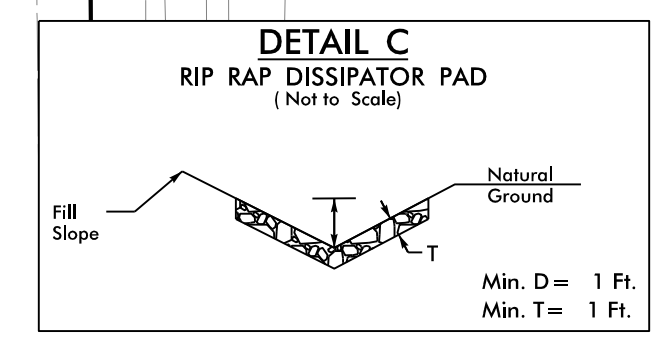
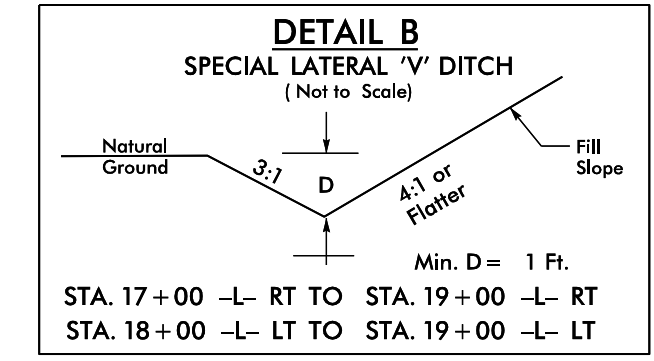
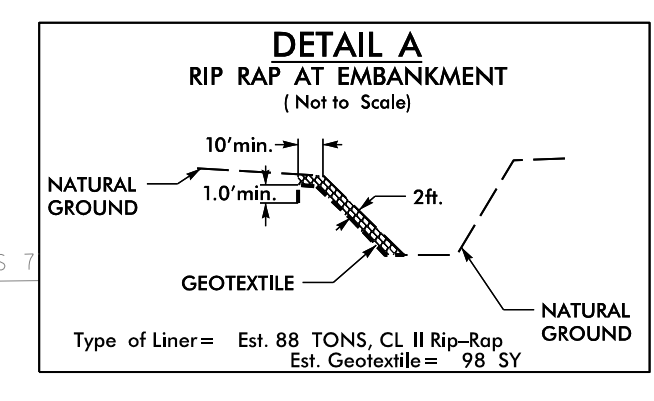
PROJECT REFERENCE NO. <i>BR-0118</i>		SHEET NO. <i>4</i>	
RW SHEET NO.		HYDRAULICS ENGINEER	
ROADWAY DESIGN ENGINEER	SEAL 043935		SEAL 049338
11/5/2019		1/5/2020	
<b>DOCUMENT NOT CONSIDERED FINAL UNLESS ALL SIGNATURES COMPLETED</b>			
PREPARED IN THE OFFICE OF:		 NC FIRM LICENSE NO. C-1508 301 Fayetteville St., Suite 1500 Raleigh, NC 27601 (919) 862-7839	

-L-

PI Sta 12+91.67	PI Sta 16+82.39
$\Delta = 2^{\circ}50'31.4"$ (LT)	$\Delta = 1^{\circ}41'49.4"$ (LT)
D = 1'00'00.0"	D = 1'00'00.0"
L = 284.21'	L = 169.71'
T = 142.13'	T = 84.86'
R = 5,729.58'	R = 5,729.58'
e = NC	e = NC



NOTE: CROSS SLOPES AT PROJECT TIE-INS ARE APPROXIMATE.  
CONTRACTOR TO ENSURE APPROPRIATE CROSS SLOPE TRANSITIONS TO EXISTING CONDITION



REVISIONS

05-MAR-2020 10:35  
BR-0118\_Rdy\_psh.dgn  
aduke