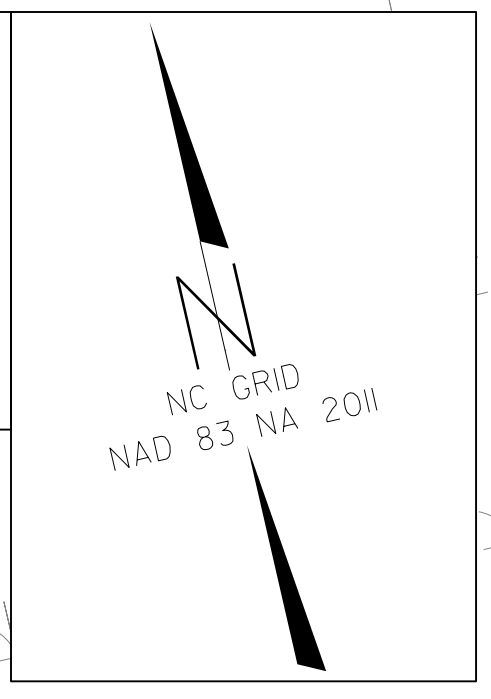
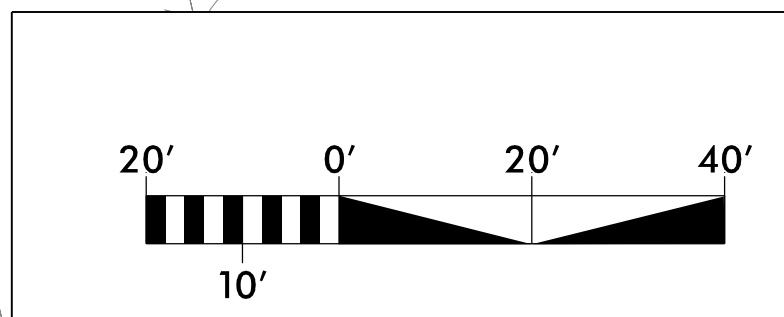


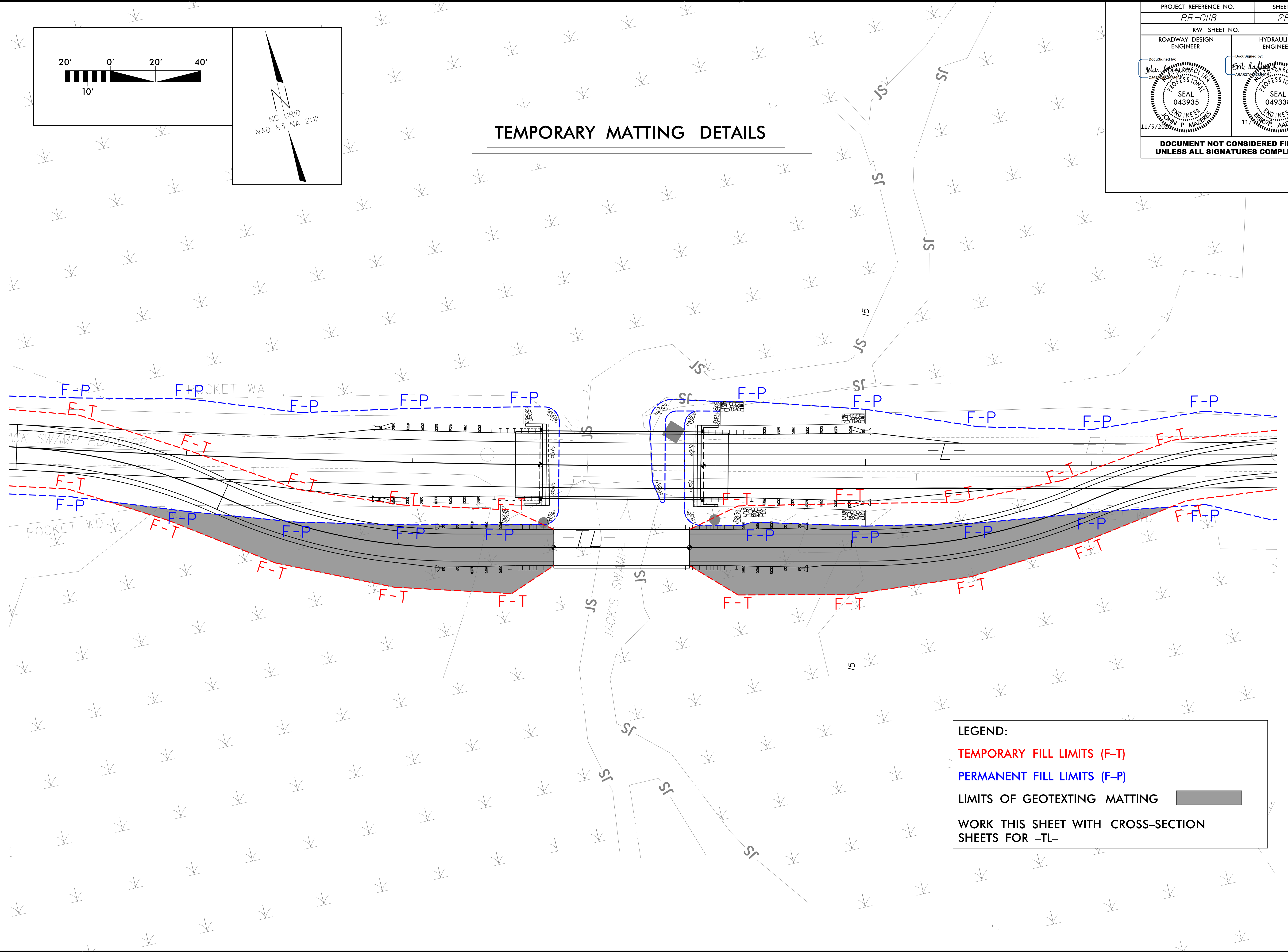
8/17/99

PROJECT REFERENCE NO. BR-0118	SHEET NO. 2B-1
RW SHEET NO.	
ROADWAY DESIGN ENGINEER	HYDRAULICS ENGINEER
DocuSigned by: John P. Maers PROFESSIONAL SEAL 043935 ENGINEER 11/5/2020	DocuSigned by: Eric A. Hall PROFESSIONAL SEAL 049338 ENGINEER 11/5/2020
DOCUMENT NOT CONSIDERED FINAL UNLESS ALL SIGNATURES COMPLETED	



TEMPORARY MATTING DETAILS

REVISIONS



LEGEND:

- TEMPORARY FILL LIMITS (F-T)
- PERMANENT FILL LIMITS (F-P)
- LIMITS OF GEOTEXTING MATTING
- WORK THIS SHEET WITH CROSS-SECTION SHEETS FOR -TL-

05-MAR-2020 10:34
BR-0118_Rdy_dtl_matting.dgn
iduke