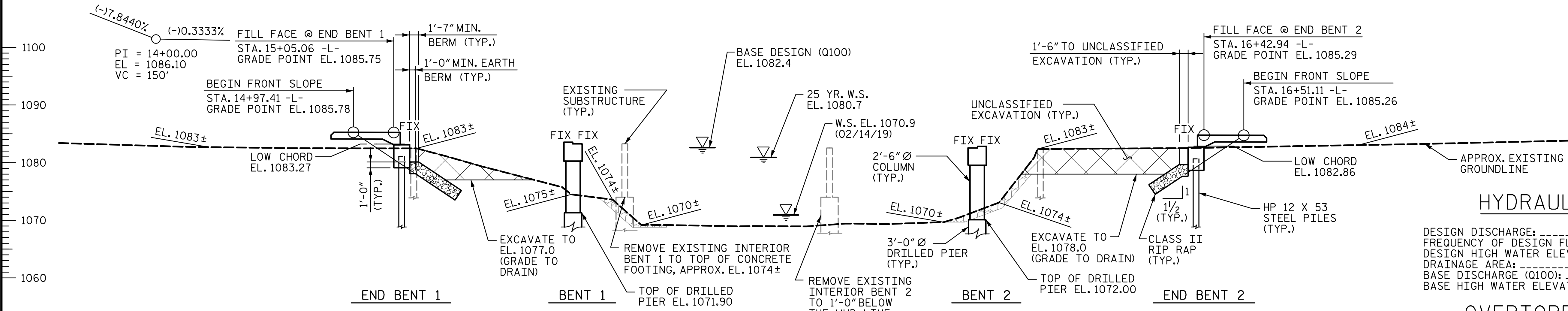


VERTICAL CURVE DATA -L-

VERTICAL CURVE DATA -L-



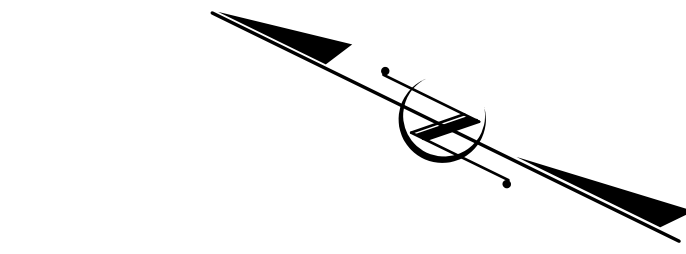
HYDRAULIC DATA

DESIGN DISCHARGE:	3500 CFS
FREQUENCY OF DESIGN FLOOD:	25 YRS.
DESIGN HIGH WATER ELEVATION:	1080.7
DRAINAGE AREA:	20.1 SQ. MI.
BASE DISCHARGE (Q100):	4900 CFS
BASE HIGH WATER ELEVATION:	1082.4

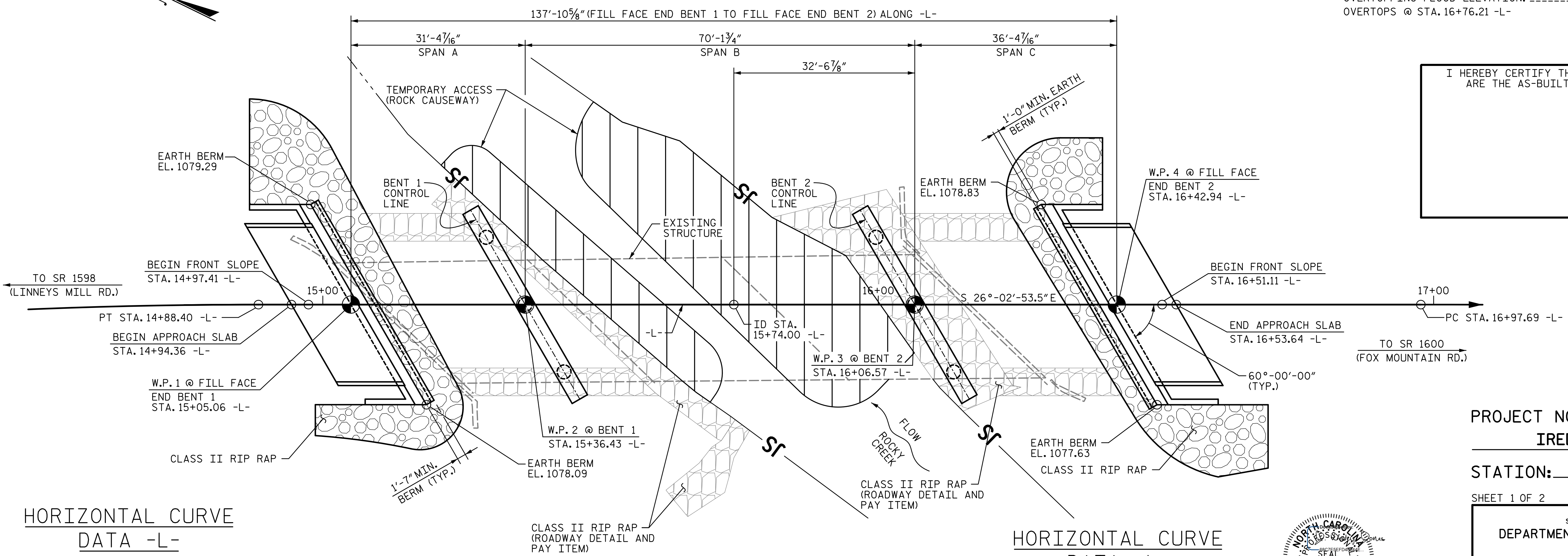
OVERTOPPING DATA

OVERTOPPING DISCHARGE:	8400 CFS
FREQUENCY OF OVERTOPPING:	500+ YRS.
OVERTOPPING FLOOD ELEVATION:	1085.3
OVERTOPS @ STA. 16+76.21 -L-	

I HEREBY CERTIFY THESE PLANS ARE THE AS-BUILT PLANS



SECTION ALONG -L- (SECTION AT BENTS TAKEN AT RIGHT ANGLES)

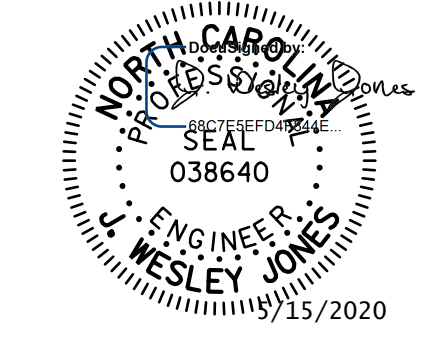


HORIZONTAL CURVE DATA -L-

PI STA. = 13+64.78
 $\Delta = 14^\circ-14'-23.5''$ (RT.)
 $D = 5^\circ-43'-46.5''$
 $L = 248.53'$
 $T = 124.91'$
 $R = 1,000.00'$

HORIZONTAL CURVE DATA -L-

PI STA. = 17+62.06
 $\Delta = 1^\circ-50'-37.6''$ (RT.)
 $D = 1^\circ-25'-56.6''$
 $L = 128.72'$
 $T = 64.37'$
 $R = 4,000.00'$



STV 100 YEARS
 STV ENGINEERS, INC.
 900 West Trade St., Suite 715
 Charlotte, NC 28202
 NC License Number F-0991

DOCUMENT NOT CONSIDERED FINAL UNLESS ALL SIGNATURES COMPLETED

PROJECT NO. BR-0115
IREDELL COUNTY
 STATION: 15+74.00 -L-
 SHEET 1 OF 2 REPLACES BRIDGE NO. 166

STATE OF NORTH CAROLINA
 DEPARTMENT OF TRANSPORTATION
 RALEIGH
GENERAL DRAWING
 FOR BRIDGE ON SR 1595
 (COOLBROOK RD.) OVER
 ROCKY CREEK
 BETWEEN SR 1598 AND SR 1600

REVISIONS				SHEET NO.
NO.	BY:	DATE:	NO.	DATE:
1			3	
2			4	

S-1
TOTAL SHEETS 23

R:\Structures\ustation\Finals\40L_00L_BR-0115_SML_GDL_00L_480166.dgn 5:08:54 PM 3/11/2020 Jones

DRAWN BY : LAH DATE : 8-19
 CHECKED BY : JWJ DATE : 1-20
 DESIGN ENGINEER OF RECORD : JWJ DATE : 3-20