

LOAD AND RESISTANCE FACTOR RATING (LRFD) SUMMARY FOR PRESTRESSED CONCRETE GIRDERS

LEVEL	VEHICLE	WEIGHT (W) (TONS)	CONTROLLING LOAD RATING	MINIMUM RATING FACTORS (RF)	TONS = W X RF	STRENGTH I LIMIT STATE										SERVICE III LIMIT STATE					COMMENT NUMBER			
						LIVELOAD FACTORS	MOMENT					SHEAR					LIVELOAD FACTORS	MOMENT						
							DISTRIBUTION FACTORS (DF)	RATING FACTOR	SPAN	GIRDER LOCATION	DISTANCE FROM LEFT END OF SPAN (ft)	DISTRIBUTION FACTORS (DF)	RATING FACTOR	SPAN	GIRDER LOCATION	DISTANCE FROM LEFT END OF SPAN (ft)		DISTRIBUTION FACTORS (DF)	RATING FACTOR	SPAN		GIRDER LOCATION	DISTANCE FROM LEFT END OF SPAN (ft)	
DESIGN LOAD RATING	HL-93(Inv)	N/A	1	1.058	--	1.75	0.267	1.29	A	EL	49.224	0.574	1.25	A	EL	9.845	0.80	0.267	1.06	A	EL	49.224		
	HL-93(Opr)	N/A	--	1.621	--	1.35	0.267	1.67	A	EL	49.224	0.574	1.62	A	EL	9.845	N/A	--	--	--	--	--		
	HS-20(Inv)	36.000	2	1.472	52.983	1.75	0.267	1.79	A	EL	49.224	0.574	1.67	A	EL	9.845	0.80	0.267	1.47	A	EL	49.224		
	HS-20(Opr)	36.000	--	2.168	78.052	1.35	0.267	2.32	A	EL	49.224	0.574	2.17	A	EL	9.845	N/A	--	--	--	--	--		
LEGAL LOAD RATING	SV	SNSH	13.500	--	3.488	47.092	1.4	0.267	5.3	A	EL	49.224	0.574	5.14	A	EL	9.845	0.80	0.267	3.49	A	EL	49.224	
		SNGARBS2	20.000	--	2.527	50.541	1.4	0.267	3.84	A	EL	49.224	0.574	3.6	A	EL	9.845	0.80	0.267	2.53	A	EL	49.224	
		SNAGRIS2	22.000	--	2.364	52.007	1.4	0.267	3.59	A	EL	49.224	0.574	3.32	A	EL	9.845	0.80	0.267	2.36	A	EL	49.224	
		SNCOTTS3	27.250	--	1.734	47.244	1.4	0.267	2.63	A	EL	49.224	0.574	2.56	A	EL	9.845	0.80	0.267	1.73	A	EL	49.224	
		SNAGGRS4	34.925	--	1.421	49.625	1.4	0.267	2.16	A	EL	49.224	0.574	2.09	A	EL	9.845	0.80	0.267	1.42	A	EL	49.224	
		SNS5A	35.550	--	1.391	49.463	1.4	0.267	2.11	A	EL	49.224	0.574	2.1	A	EL	9.845	0.80	0.267	1.39	A	EL	49.224	
		SNS6A	39.950	--	1.265	50.545	1.4	0.267	1.92	A	EL	49.224	0.574	1.9	A	EL	9.845	0.80	0.267	1.27	A	EL	49.224	
	SNS7B	42.000	--	1.204	50.587	1.4	0.267	1.83	A	EL	49.224	0.574	1.85	A	EL	9.845	0.80	0.267	1.20	A	EL	49.224		
	TTST	TNAGRIT3	33.000	--	1.54	50.804	1.4	0.267	2.34	A	EL	49.224	0.574	2.27	A	EL	9.845	0.80	0.267	1.54	A	EL	49.224	
		TNT4A	33.075	--	1.543	51.042	1.4	0.267	2.34	A	EL	49.224	0.574	2.23	A	EL	9.845	0.80	0.267	1.54	A	EL	49.224	
		TNT6A	41.600	--	1.251	52.049	1.4	0.267	1.9	A	EL	49.224	0.574	1.94	A	EL	9.845	0.80	0.267	1.25	A	EL	49.224	
		TNT7A	42.000	--	1.252	52.576	1.4	0.267	1.9	A	EL	49.224	0.574	1.9	A	EL	9.845	0.80	0.267	1.25	A	EL	49.224	
		TNT7B	42.000	--	1.281	53.819	1.4	0.267	1.95	A	EL	49.224	0.574	1.82	A	EL	9.845	0.80	0.267	1.28	A	EL	49.224	
		TNAGRIT4	43.000	--	1.229	52.851	1.4	0.267	1.87	A	EL	49.224	0.574	1.76	A	EL	9.845	0.80	0.267	1.23	A	EL	49.224	
TNAGT5A		45.000	--	1.164	52.365	1.4	0.267	1.77	A	EL	49.224	0.574	1.73	A	EL	9.845	0.80	0.267	1.16	A	EL	49.224		
TNAGT5B	45.000	3	1.154	51.925	1.4	0.267	1.75	A	EL	49.224	0.574	1.68	A	EL	9.845	0.80	0.267	1.15	A	EL	49.224			

LOAD FACTORS:

DESIGN LOAD RATING FACTORS	LIMIT STATE	γ_{DC}	γ_{DW}
	STRENGTH I	1.25	1.50
	SERVICE III	1.00	1.00

NOTES:

MINIMUM RATING FACTORS ARE BASED ON THE STRENGTH I AND SERVICE III LIMIT STATES.
ALLOWABLE STRESSES FOR SERVICE III LIMIT STATE ARE AS REQUIRED FOR DESIGN.

COMMENTS:

- 1.
- 2.
- 3.
- 4.

CONTROLLING LOAD RATING

1 DESIGN LOAD RATING (HL-93)

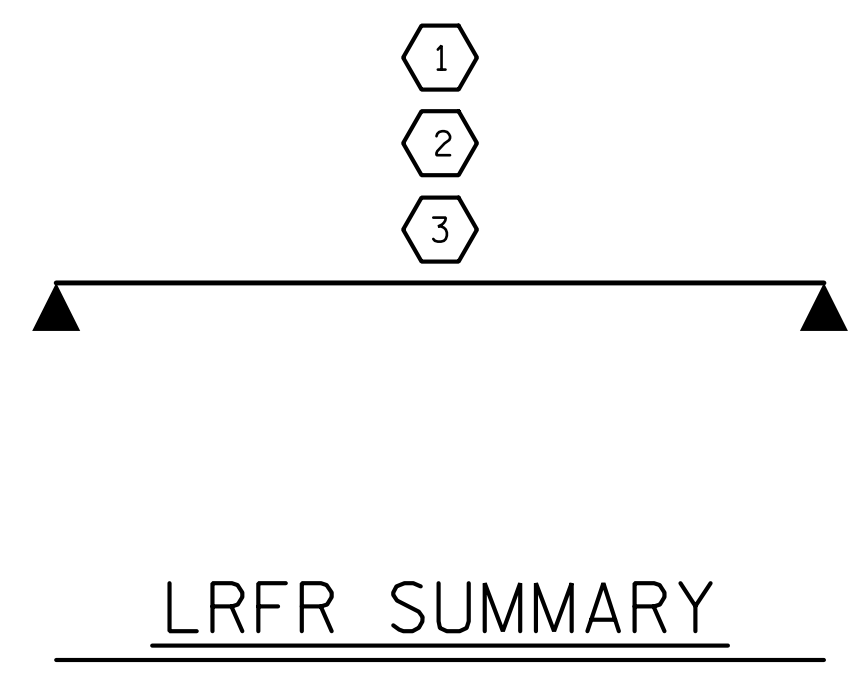
2 DESIGN LOAD RATING (HS-20)

3 LEGAL LOAD RATING **

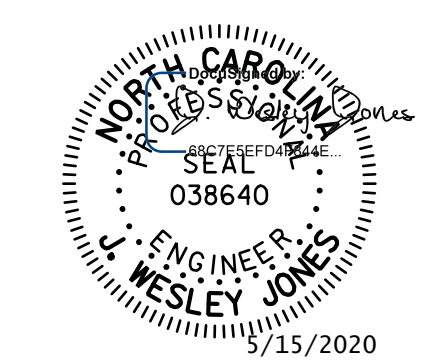
** SEE CHART FOR VEHICLE TYPE

GIRDER LOCATION

I - INTERIOR GIRDER
EL - EXTERIOR LEFT GIRDER
ER - EXTERIOR RIGHT GIRDER



PROJECT NO. BR-0114
IREDELL COUNTY
 STATION: 16+08.00 -L-



STV 100 years
 STV ENGINEERS, INC.
 900 West Trade St., Suite 715
 Charlotte, NC 28202
 NC License Number F-0991

DOCUMENT NOT CONSIDERED
FINAL UNLESS ALL
SIGNATURES COMPLETED

STATE OF NORTH CAROLINA
 DEPARTMENT OF TRANSPORTATION
 RALEIGH

STANDARD
 LRFR SUMMARY FOR
 100' BOX BEAM UNIT
 105° SKEW
 (NON-INTERSTATE TRAFFIC)

REVISIONS				SHEET NO.		
NO.	BY:	DATE:	NO.	BY:	DATE:	S-3
1			3			TOTAL SHEETS 15
2			4			

R:\Structures\ustation\Finals\40L_005_BR-0114_SMU_LRFR_003_480165.dgn 3/11/2020 4:37:43 PM Jones

DRAWN BY : WAW DATE : 10-19
 CHECKED BY : JWJ DATE : 12-19
 DESIGN ENGINEER OF RECORD : JWJ DATE : 3-20
 DRAWN BY : TMG II/II
 CHECKED BY : AAC II/II