

VERTICAL CURVE DATA -L-

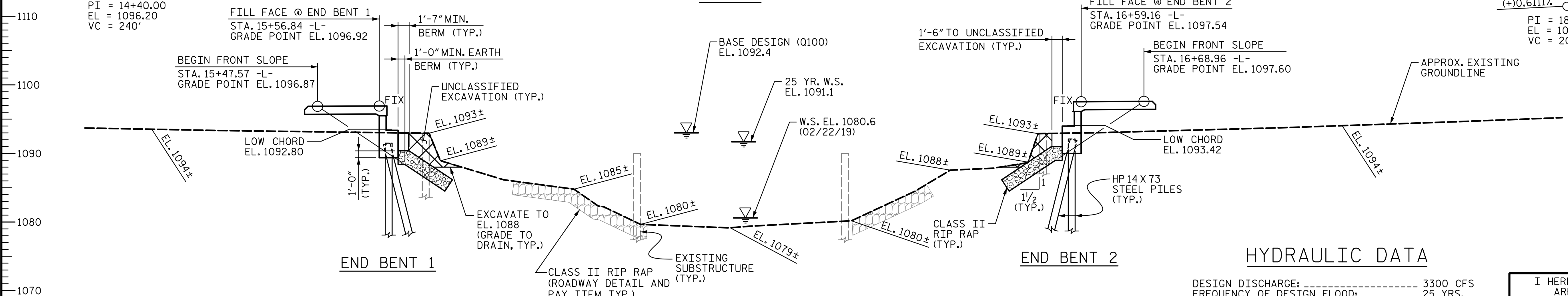
(-)-4.2105% (+)0.6111%

PI = 14+40.00
EL = 1096.20
VC = 240'

VERTICAL CURVE DATA -L-

(+)0.6111% (+)8.0000%

PI = 18+00.00
EL = 1098.40
VC = 200'



SECTION ALONG -L-

(SECTION AT END BENTS TAKEN AT RIGHT ANGLES)

HYDRAULIC DATA

DESIGN DISCHARGE: 3300 CFS
 FREQUENCY OF DESIGN FLOOD: 25 YRS.
 DESIGN HIGH WATER ELEVATION: 1091.1
 DRAINAGE AREA: 18.6 SQ. MI.
 BASE DISCHARGE (Q100): 4600 CFS
 BASE HIGH WATER ELEVATION: 1092.4

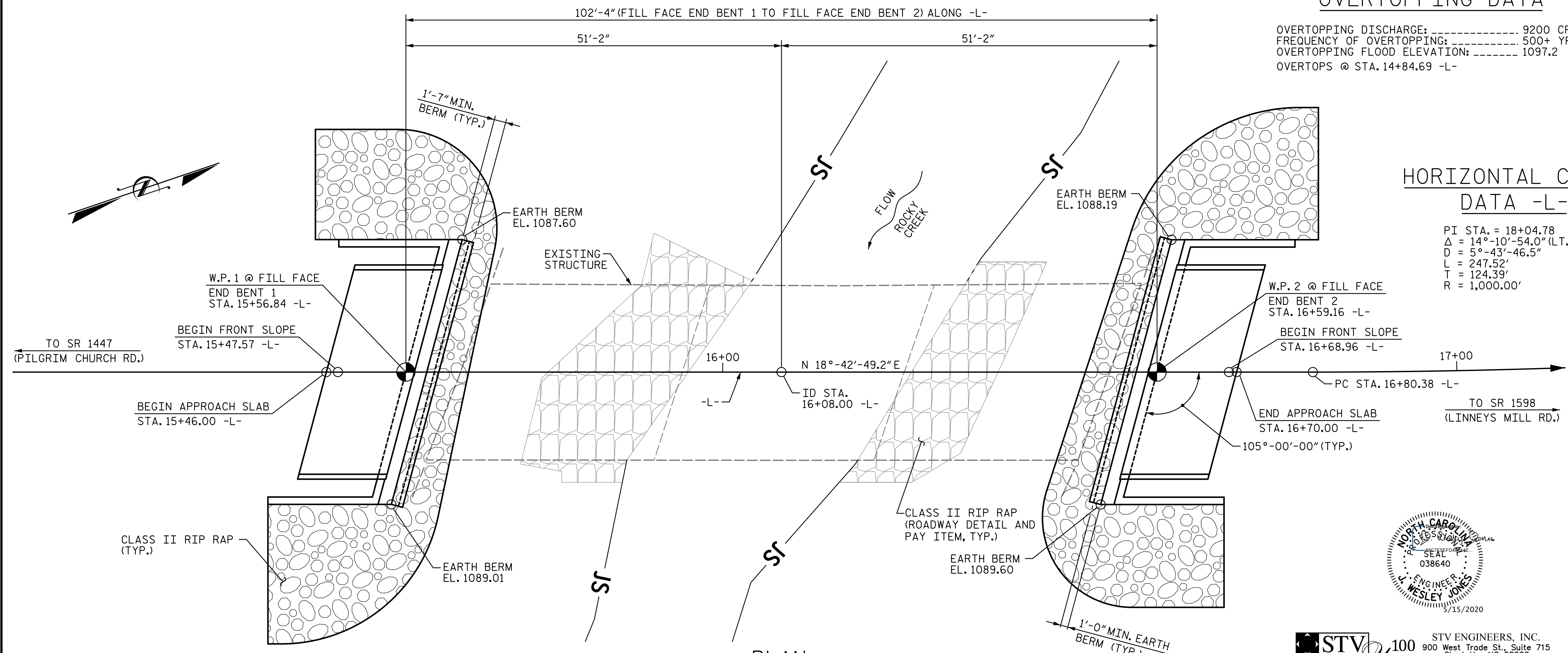
OVERTOPPING DATA

OVERTOPPING DISCHARGE: 9200 CFS
 FREQUENCY OF OVERTOPPING: 500+ YRS.
 OVERTOPPING FLOOD ELEVATION: 1097.2
 OVERTOPS @ STA. 14+84.69 -L-

I HEREBY CERTIFY THESE PLANS ARE THE AS-BUILT PLANS

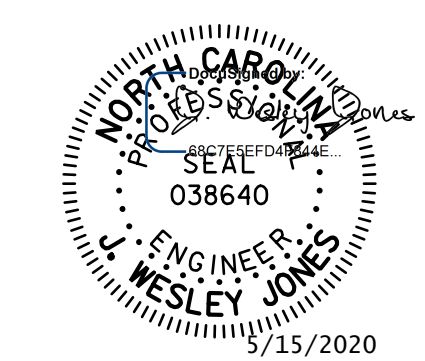
HORIZONTAL CURVE DATA -L-

PI STA. = 18+04.78
 $\Delta = 14^\circ-10'-54.0''$ (LT.)
 $D = 5^\circ-43'-46.5''$
 $L = 247.52'$
 $T = 124.39'$
 $R = 1,000.00'$



PLAN

(STEEL PILES NOT SHOWN FOR CLARITY)



STV 100 YEARS
 STV ENGINEERS, INC.
 900 West Trade St., Suite 715
 Charlotte, NC 28202
 NC License Number F-0991

DOCUMENT NOT CONSIDERED FINAL UNLESS ALL SIGNATURES COMPLETED

PROJECT NO. **BR-0114**

IREDELL COUNTY

STATION: **16+08.00 -L-**

SHEET 1 OF 2 REPLACES BRIDGE NO. 165

STATE OF NORTH CAROLINA
 DEPARTMENT OF TRANSPORTATION
 RALEIGH
GENERAL DRAWING
 FOR BRIDGE ON SR 1601
 (BRANTON RD.) OVER
 ROCKY CREEK
 BETWEEN SR 1447 AND SR 1598

REVISIONS				SHEET NO.
NO.	BY:	DATE:	NO.	DATE:
1			3	
2			4	

TOTAL SHEETS: 15

DRAWN BY : SGH DATE : 7-19
 CHECKED BY : JWJ DATE : 12-19
 DESIGN ENGINEER OF RECORD : JWJ DATE : 3-20

R:\Structures\ustation\Finals\401_001_BR-0114_SML_GDL_001_480165.dgn 4:37:41 PM 3/11/2020 Jones