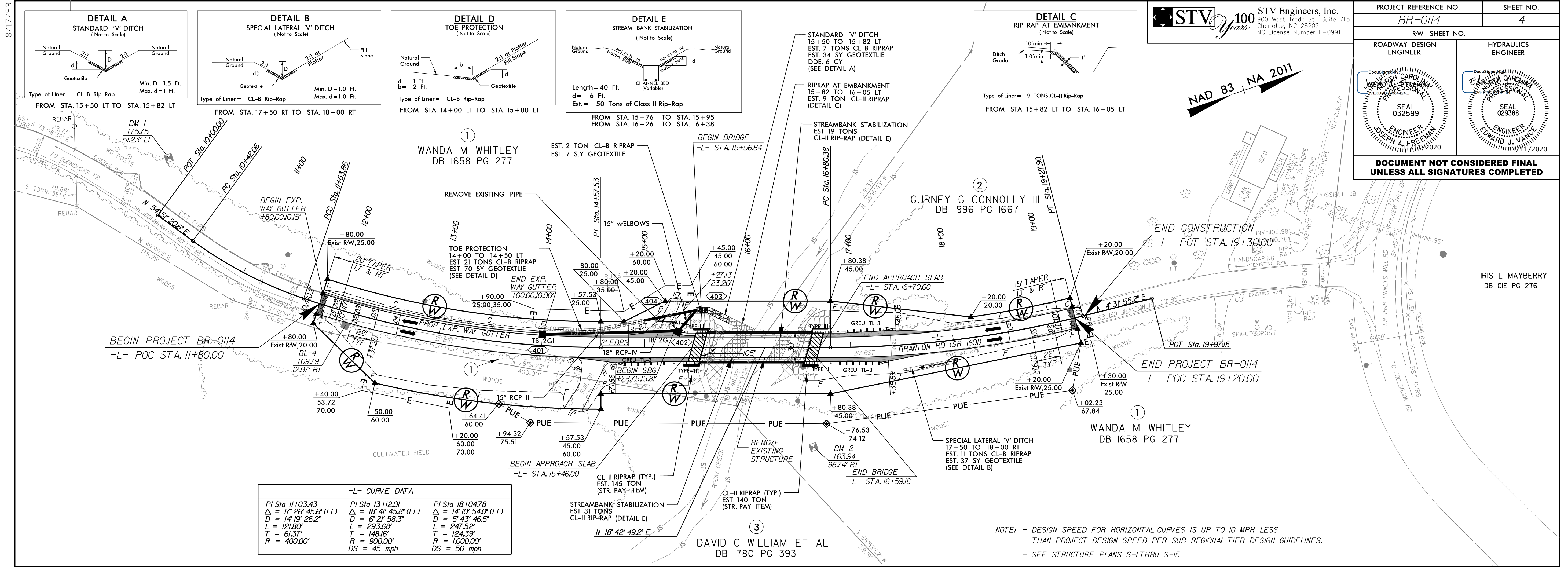


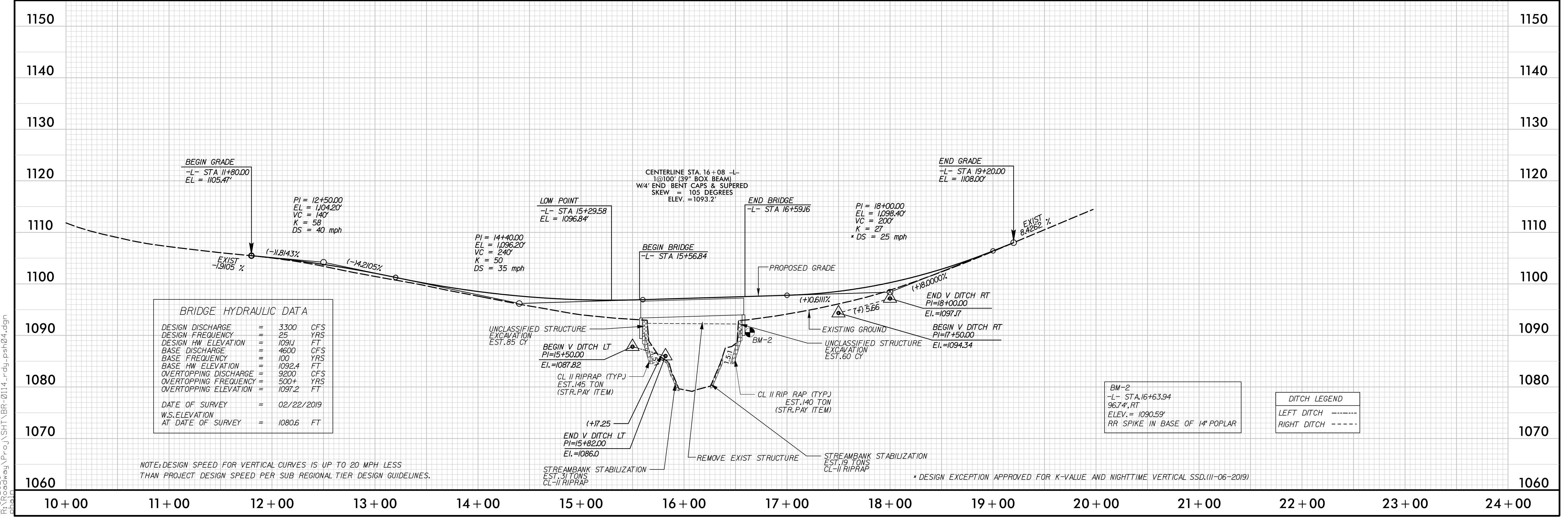
PROJECT REFERENCE NO. BR-0114		SHEET NO. 4	
RW SHEET NO.		HYDRAULICS ENGINEER	
ROADWAY DESIGN ENGINEER		SEAL 032599	
SEAL 032599		SEAL 029388	
JOSEPH A. FREEMAN		EDWARD J. VANCE	
DOCUMENT NOT CONSIDERED FINAL UNLESS ALL SIGNATURES COMPLETED			



-L- CURVE DATA

PI Sta 11+03.43	PI Sta 13+12.01	PI Sta 18+04.78
$\Delta = 17^{\circ} 28' 45.6''$ (LT)	$\Delta = 18^{\circ} 41' 45.8''$ (LT)	$\Delta = 14^{\circ} 10' 54.0''$ (LT)
$D = 14^{\circ} 19' 26.2''$	$D = 6^{\circ} 21' 58.3''$	$D = 5^{\circ} 43' 46.5''$
$L = 121.80'$	$L = 293.68'$	$L = 247.52'$
$T = 61.37'$	$T = 148.16'$	$T = 124.39'$
$R = 4000.0'$	$R = 900.00'$	$R = 1000.00'$
	$DS = 45$ mph	$DS = 50$ mph

NOTE: - DESIGN SPEED FOR HORIZONTAL CURVES IS UP TO 10 MPH LESS THAN PROJECT DESIGN SPEED PER SUB REGIONAL TIER DESIGN GUIDELINES.
- SEE STRUCTURE PLANS S-1 THRU S-15



NOTE: DESIGN SPEED FOR VERTICAL CURVES IS UP TO 20 MPH LESS THAN PROJECT DESIGN SPEED PER SUB REGIONAL TIER DESIGN GUIDELINES.

* DESIGN EXCEPTION APPROVED FOR K-VALUE AND NIGHTTIME VERTICAL SSD.(11-06-2019)

8/17/19
11/8/2020
K:\Projects\2020\BR-0114\Drawings\Profile\BR-0114_rdy_psh04.dgn