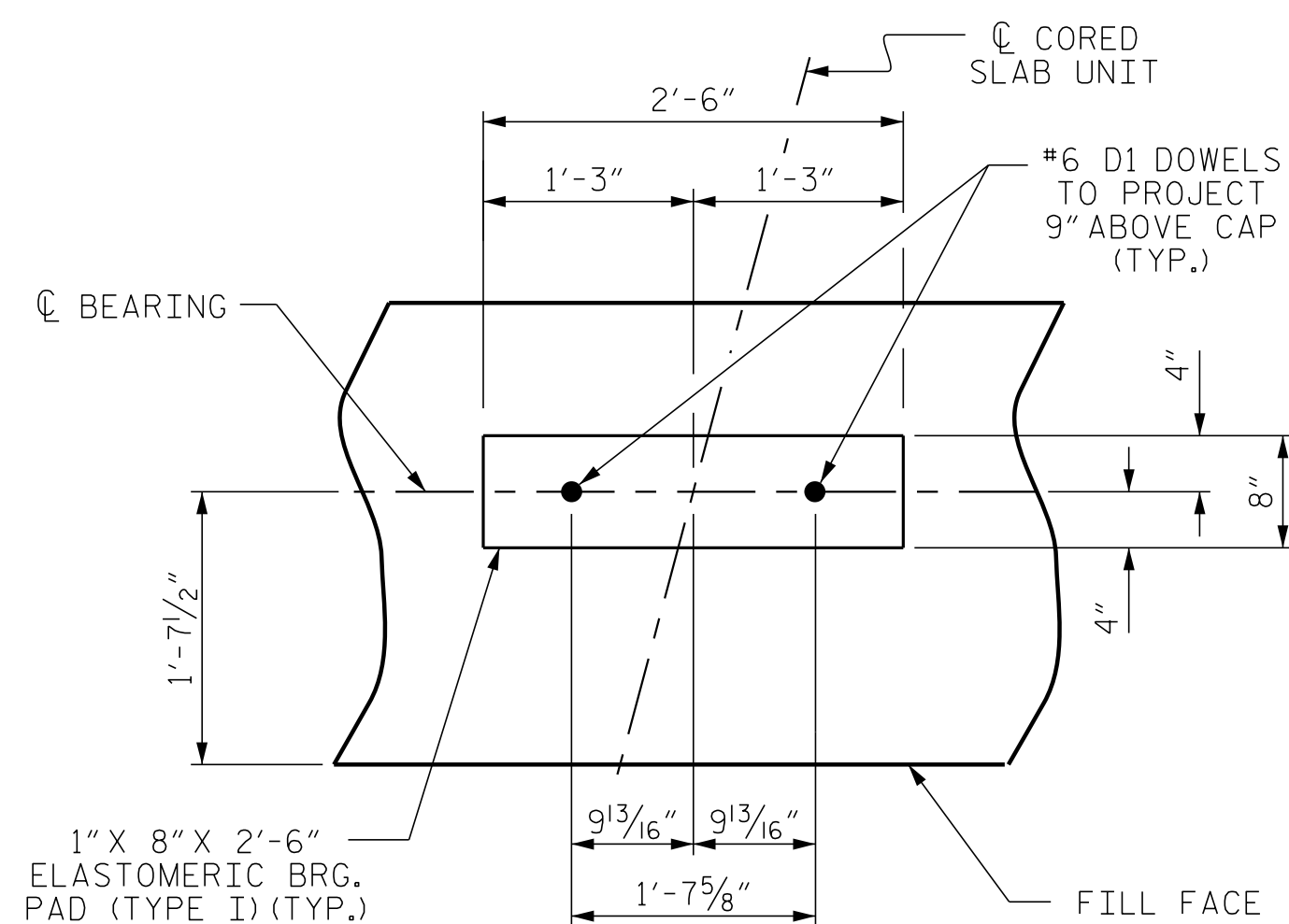


BAGGED STONE AND PIPE SHALL BE PLACED IMMEDIATELY AFTER COMPLETION OF END BENT EXCAVATION. PIPE MAY BE EITHER CONCRETE, CORRUGATED STEEL, CORRUGATED ALUMINUM ALLOY, OR CORRUGATED PLASTIC. PERFORATED PIPE WILL NOT BE ALLOWED.

BAGGED STONE SHALL REMAIN IN PLACE UNTIL THE ENGINEER DIRECTS THAT IT BE REMOVED. THE CONTRACTOR SHALL REMOVE AND DISPOSE OF SILT ACCUMULATIONS AT BAGGED STONE WHEN SO DIRECTED BY THE ENGINEER. BAGS SHALL BE REMOVED AND REPLACED WHENEVER THE ENGINEER DETERMINES THAT THEY HAVE DETERIORATED AND LOST THEIR EFFECTIVENESS.

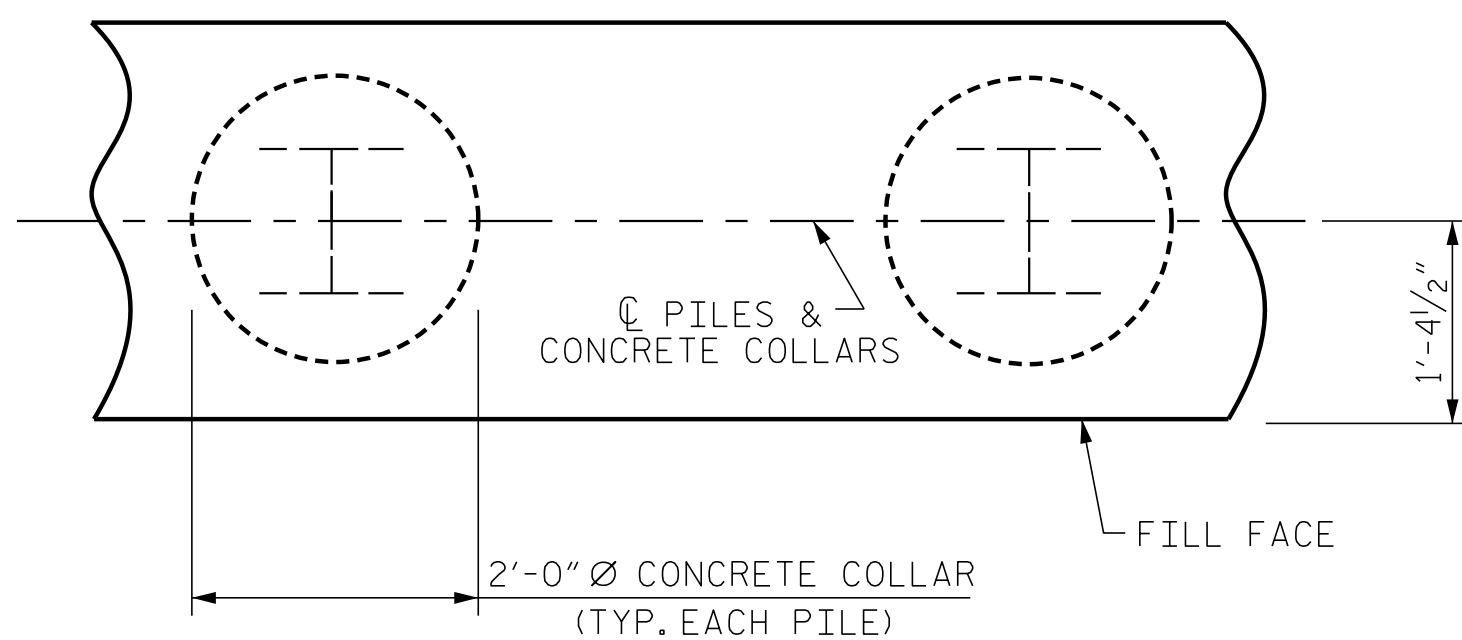
NO SEPARATE PAYMENT WILL BE MADE FOR THIS WORK AND THE ENTIRE COST OF THIS WORK SHALL BE INCLUDED IN THE UNIT CONTRACT PRICE BID FOR THE SEVERAL PAY ITEMS.

TEMPORARY DRAINAGE AT END BENT



DETAIL "A"

(END BENT No. 1 SHOWN, END BENT No. 2 SIMILAR BY ROTATION)

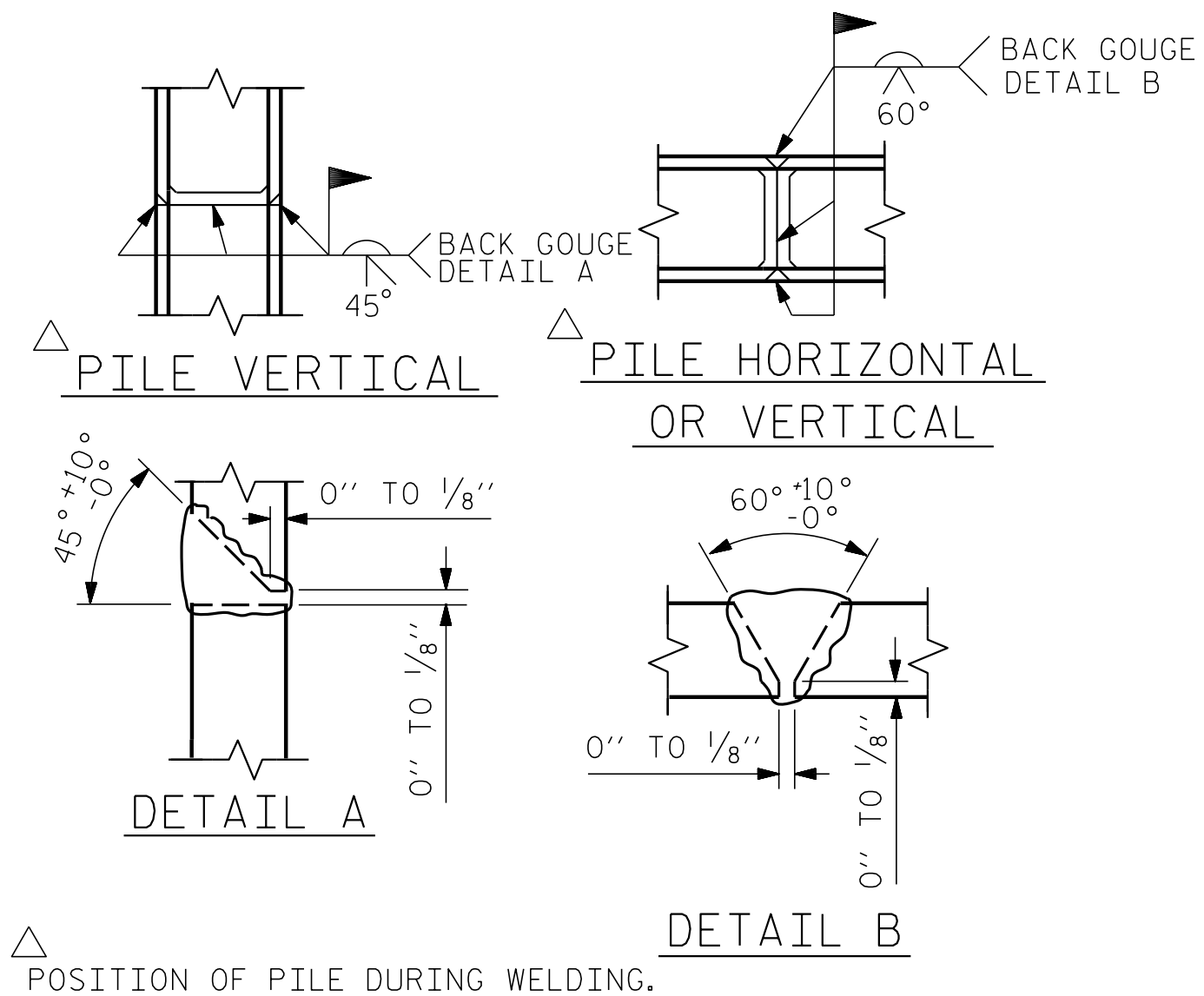


PLAN

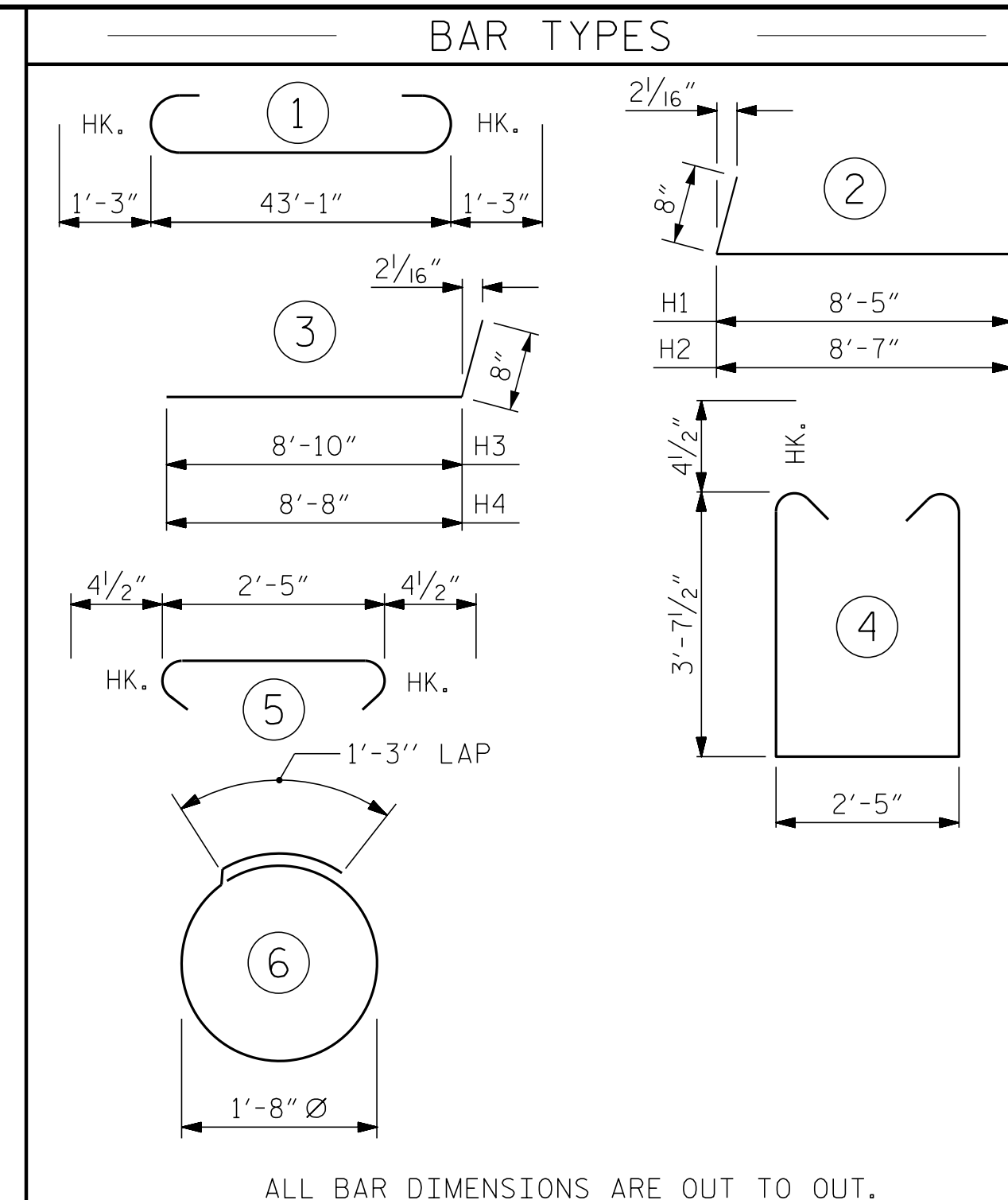
ELEVATION

CORROSION PROTECTION FOR STEEL PILES DETAIL

(END BENT No. 1 SHOWN, END BENT No. 2 SIMILAR BY ROTATION)



PILE SPLICE DETAILS



ALL BAR DIMENSIONS ARE OUT TO OUT.

END BENT No. 1		END BENT No. 2	
HP 12 X 53 STEEL PILES NO: 7 LIN. FT. = 350		HP 12 X 53 STEEL PILES NO: 7 LIN. FT. = 350	
PILE DRIVING EQUIPMENT SETUP FOR HP 12 X 53 STEEL PILES NO: 7		PILE DRIVING EQUIPMENT SETUP FOR HP 12 X 53 STEEL PILES NO: 7	
PILE REDRIVES NO: 4		PILE REDRIVES NO: 4	

BILL OF MATERIAL

FOR ONE END BENT

BAR NO.	SIZE	TYPE	LENGTH	WEIGHT
B1	#8		45'-7"	1240
B2	#4	STR	22'-10"	427
B3	#4	STR	2'-5"	18
D1	#6	STR	1'-6"	54
H1	#4	2	9'-1"	61
H2	#4	2	9'-3"	62
H3	#4	3	9'-6"	63
H4	#4	3	9'-4"	62
K1	#4	STR	3'-1"	33
S1	#4	4	10'-5"	404
S2	#4	5	3'-2"	123
S3	#4	6	6'-6"	122
V1	#4	STR	6'-2"	218

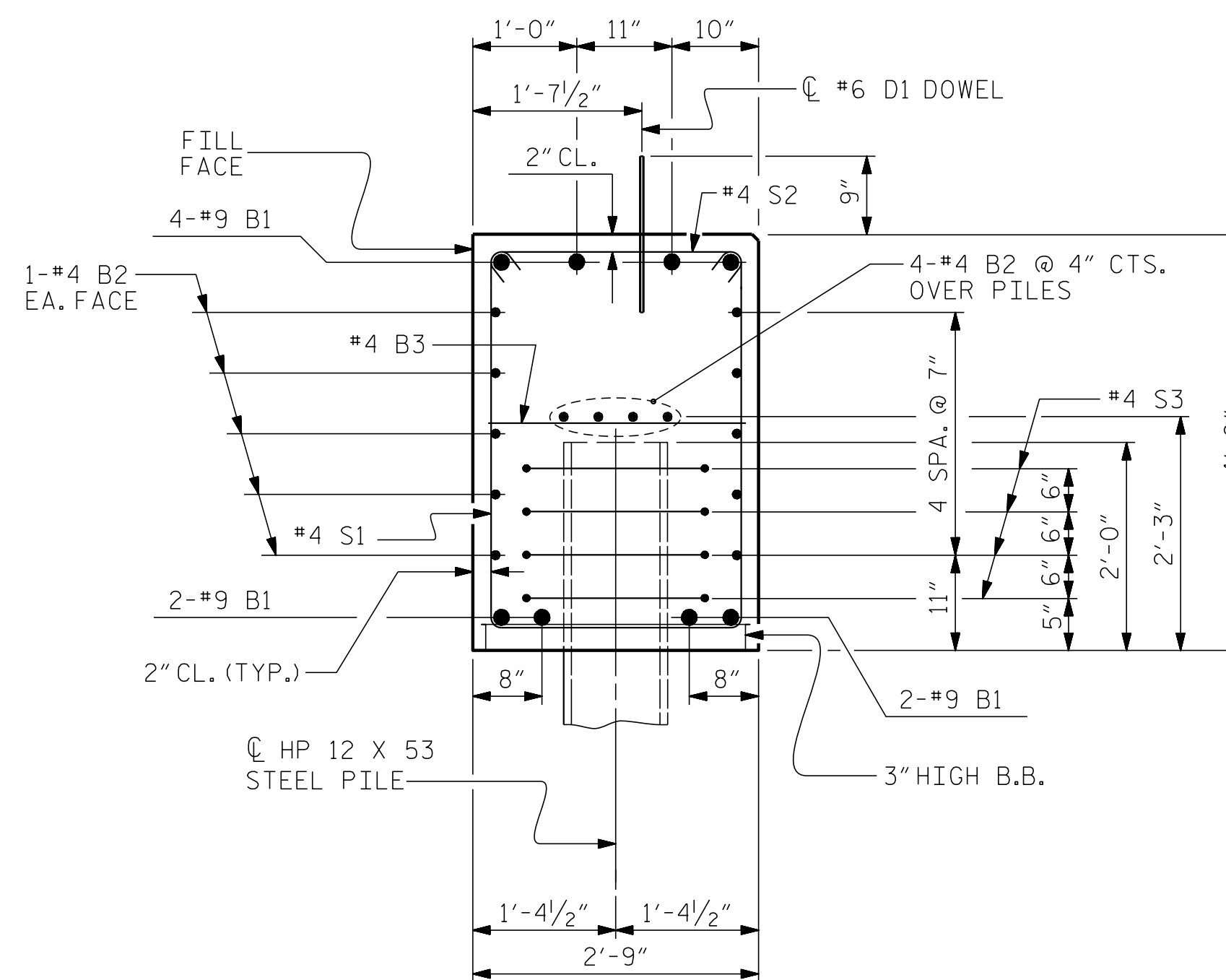
REINFORCING STEEL (FOR ONE END BENT) 2887 LBS.

CLASS A CONCRETE BREAKDOWN (FOR ONE END BENT)

POUR #1 CAP, LOWER PART OF WINGS & COLLARS 21.3 C.Y.

POUR #2 UPPER PART OF WINGS 2.1 C.Y.

TOTAL CLASS A CONCRETE 23.4 C.Y.



SECTION A-A

(CONCRETE COLLAR NOT SHOWN FOR CLARITY. SEE "CORROSION PROTECTION FOR STEEL PILES DETAIL.")

PROJECT NO. BR-0112

EDGEcombe COUNTY

STATION: 16+42.60 -L-

SHEET 4 OF 4

ENGINEER OF RECORD
4/29/2020
NORTH CAROLINA PROFESSIONAL SEAL 22072
ENGINEER ARTHUR DILLON
DocuSigned by:
John Arthur Dillworth
ETHERILL ENGINEERING
1223 Jones Franklin Rd.
Raleigh, N.C. 27606
Bus: 919 851 8077
Fax: 919 851 8107
LICENSE NO. F-0377

STATE OF NORTH CAROLINA
DEPARTMENT OF TRANSPORTATION
RALEIGH
SUBSTRUCTURE
END BENT No. 1 & 2
DETAILS

REVISIONS

NO.	BY:	DATE:	NO.	BY:	DATE:	SHEET NO.
1			3			S-14
2			4			TOTAL SHEETS 21

DRAWN BY: J. PENDERGRAFT DATE: 9-19
CHECKED BY: B. C. HUNT DATE: 10-19

DOCUMENT NOT CONSIDERED FINAL
UNLESS ALL SIGNATURES COMPLETED