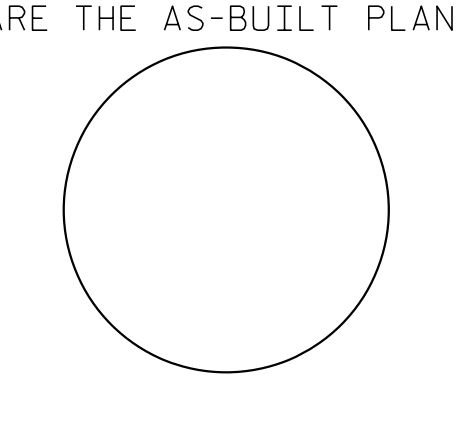
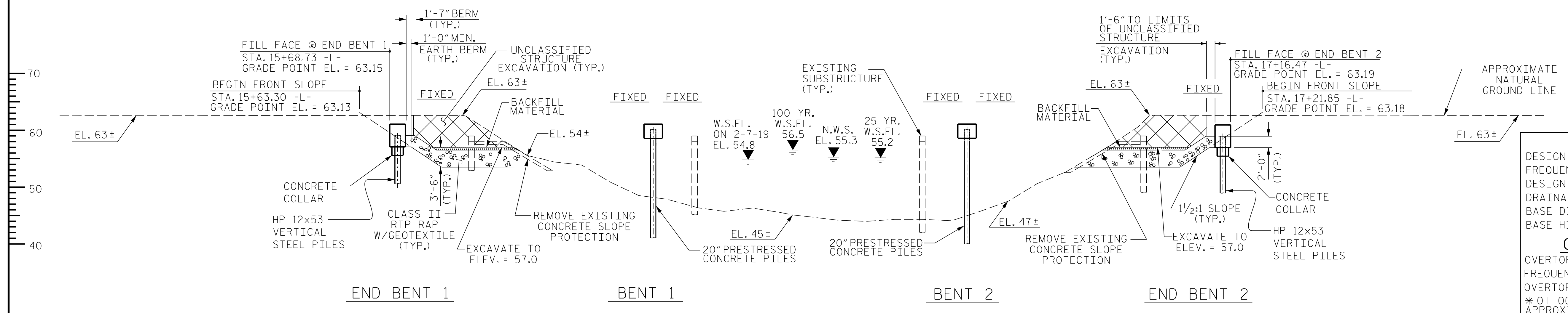


GRADE DATA
 PI = 16+42.00 -L-
 EL = 63.43
 VC = 200'
 (+)0.3720% (-)0.3041%

I HEREBY CERTIFY THESE PLANS ARE THE AS-BUILT PLANS

HYDRAULIC DATA

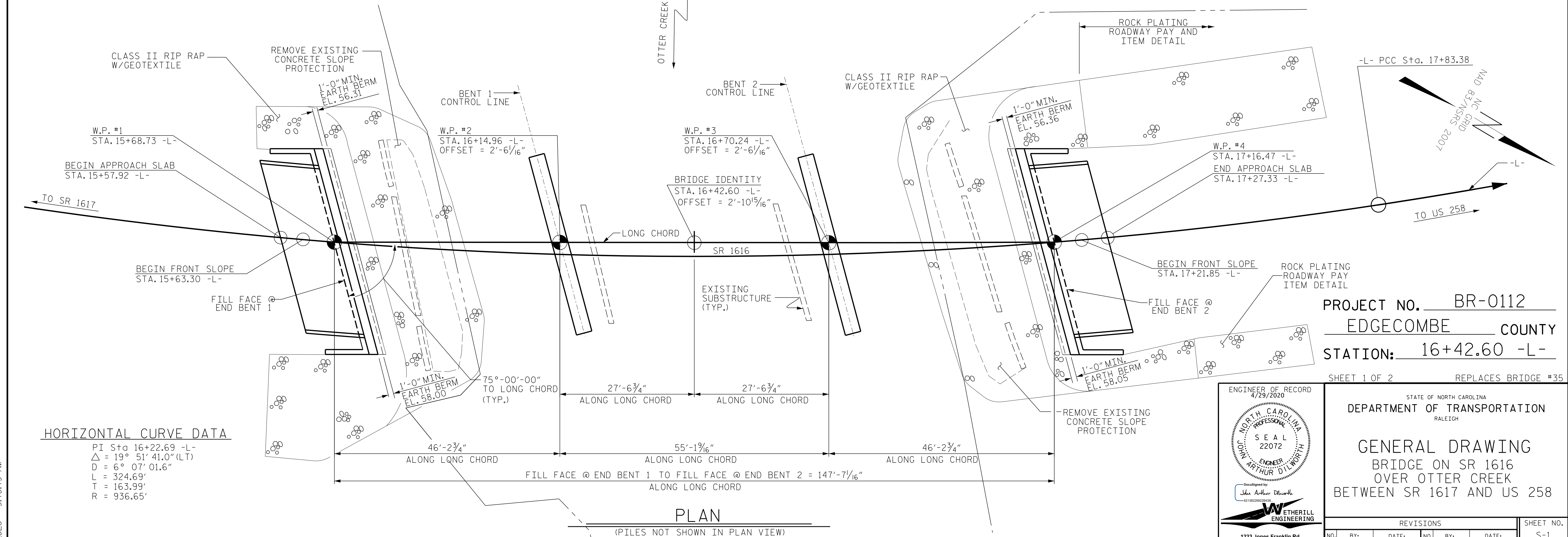
DESIGN DISCHARGE = 1300 C.F.S.
 FREQUENCY OF DESIGN FLOOD = 25 YRS.
 DESIGN HIGH WATER ELEVATION = 55.2
 DRAINAGE AREA = 16.1 SQ. MI.
 BASE DISCHARGE (Q10Q) = 2000 C.F.S.
 BASE HIGH WATER ELEVATION = 56.5

OVERTOPPING FLOOD DATA


OVERTOPPING DISCHARGE = 9300± C.F.S.
 FREQUENCY OF OVERTOPPING FLOOD = 1000+ YRS.
 OVERTOPPING FLOOD ELEVATION = 63.3 *
 *OT OCCURS @ EXISTING ROAD LOW POINT APPROXIMATELY 300' EAST OF BRIDGE, EL. = 63.3 HIGH SIDE OF SUPER (EL. 62.2 @ C/L OF EXISTING ROAD)

LOW CHORD ELEVATIONS

	ELEVATION @ C/L BRG. LEFT SIDE
END BENT 1	60.59
END BENT 2	60.64



PROJECT NO. BR-0112
 EDGECOMBE COUNTY
 STATION: 16+42.60 -L-
 SHEET 1 OF 2 REPLACES BRIDGE #35

ENGINEER OF RECORD
 4/29/2020

 JOHN ARTHUR DILLWORTH
 ENGINEER
 1223 Jones Franklin Rd.
 Raleigh, N.C. 27606
 Bus: 919 851 8077
 Fax: 919 851 8107
 LICENSE NO. F-0377

STATE OF NORTH CAROLINA
 DEPARTMENT OF TRANSPORTATION
 RALEIGH

GENERAL DRAWING
 BRIDGE ON SR 1616
 OVER OTTER CREEK
 BETWEEN SR 1617 AND US 258

REVISIONS					
NO.	BY:	DATE:	NO.	BY:	DATE:
1			3		
2			4		

SHEET NO. S-1
 TOTAL SHEETS 21

DRAWN BY: J. PENDERGRAFT DATE: 3-19
 CHECKED BY: B.C. HUNT DATE: 5-19

DOCUMENT NOT CONSIDERED FINAL
 UNLESS ALL SIGNATURES COMPLETED

P:\2019\19105.01_BR-0112_Structures\DWG\BR0112_STR_GD.dgn
 1/8/2020 9:10:19 AM