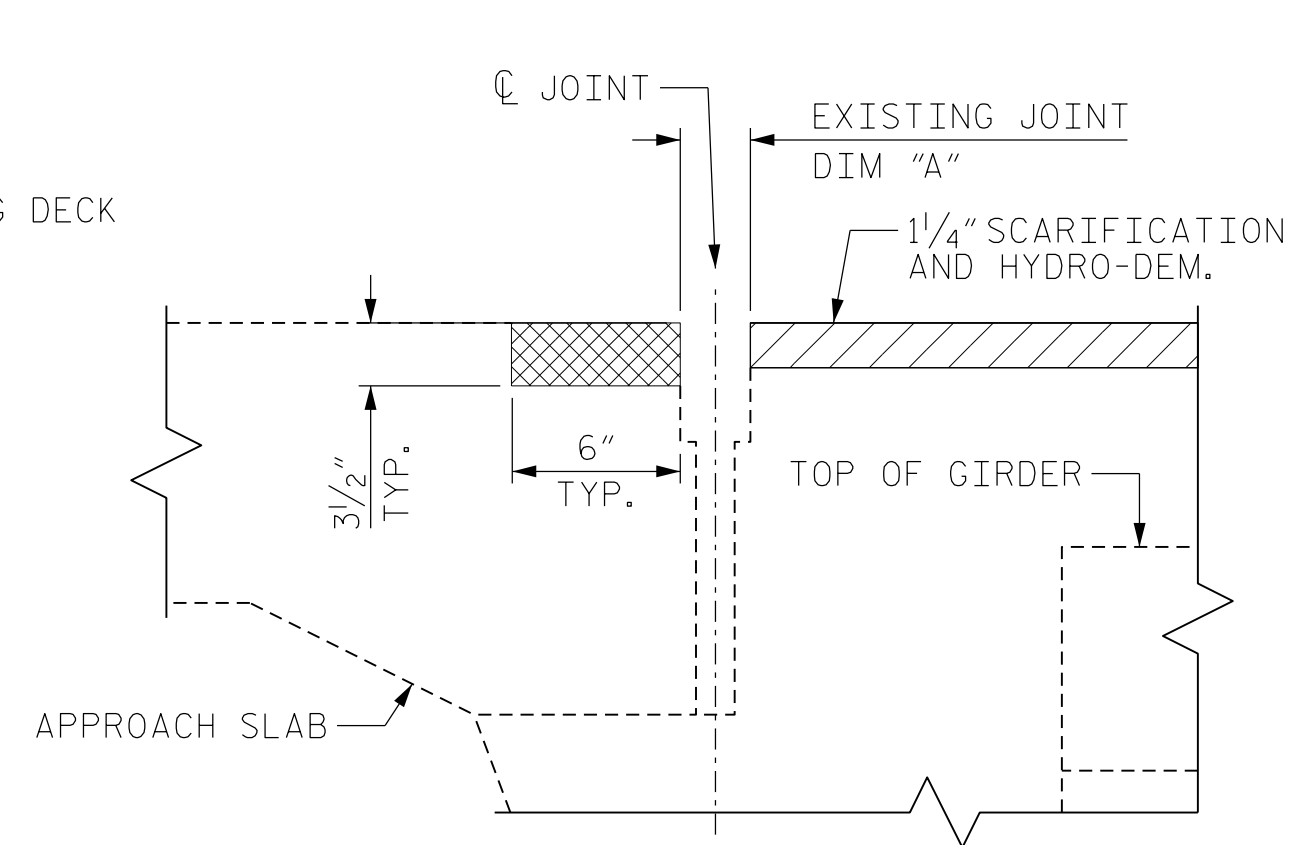
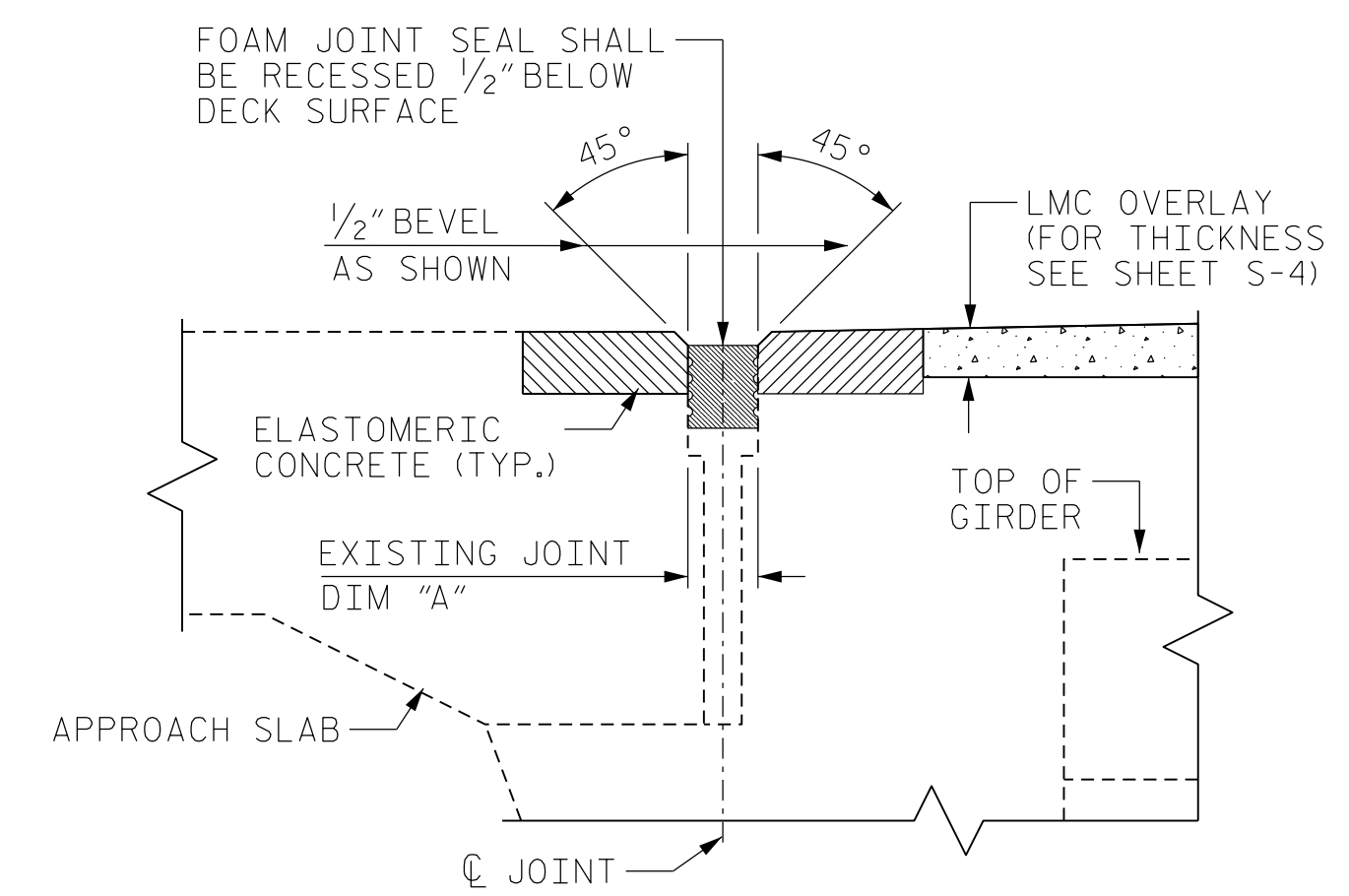


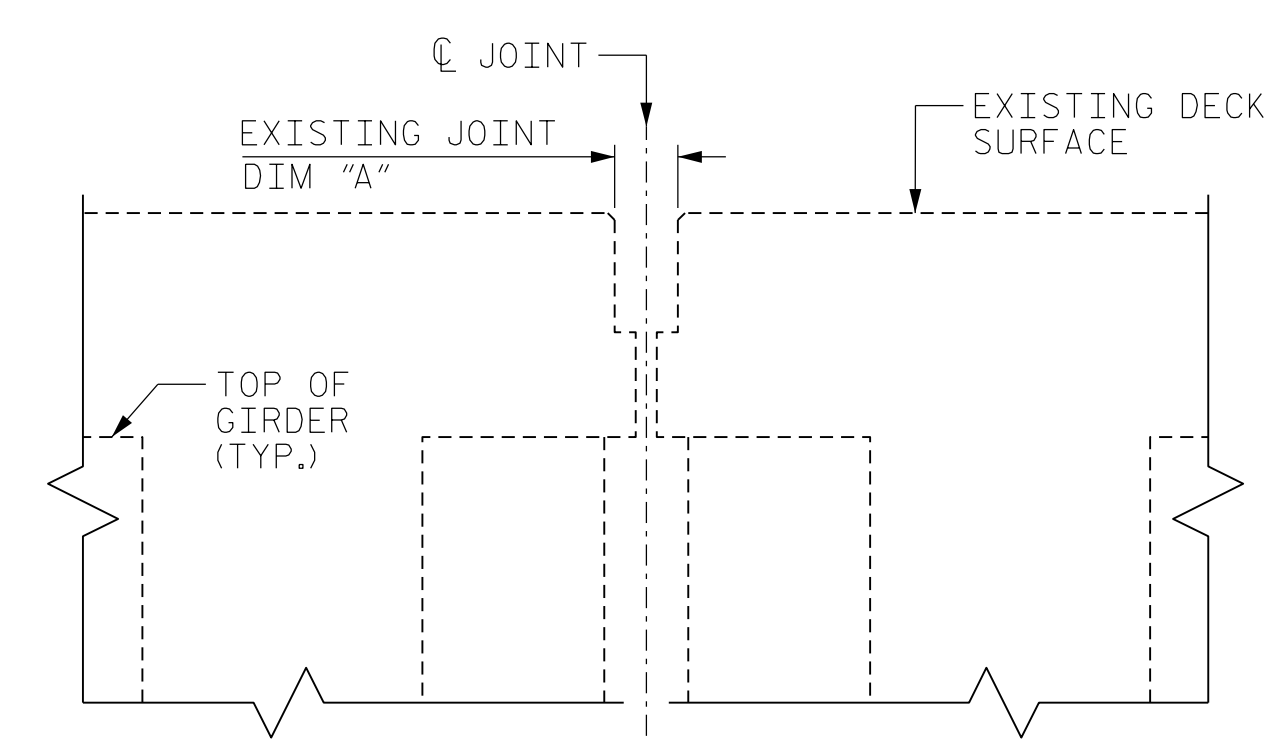
SECTION A-A
(EXISTING JOINT)



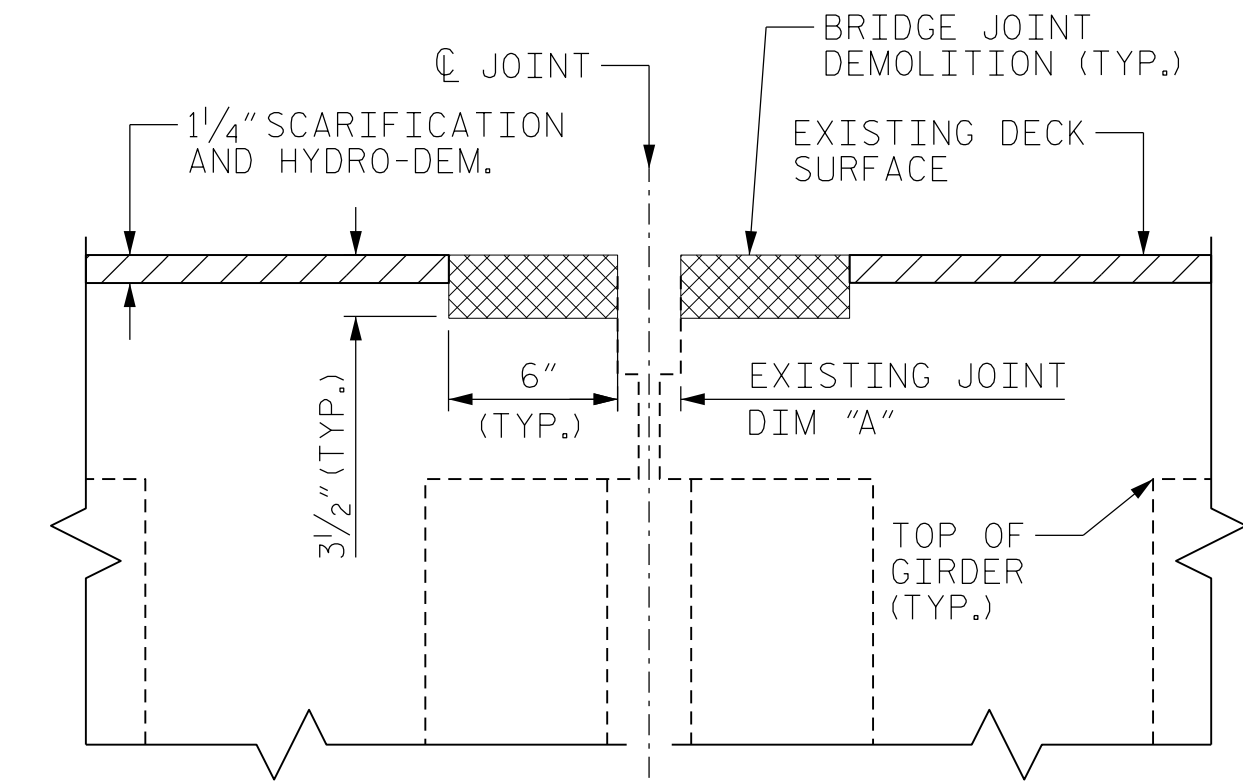
SECTION A-A
(MIN. EXISTING JOINT DEMOLITION)



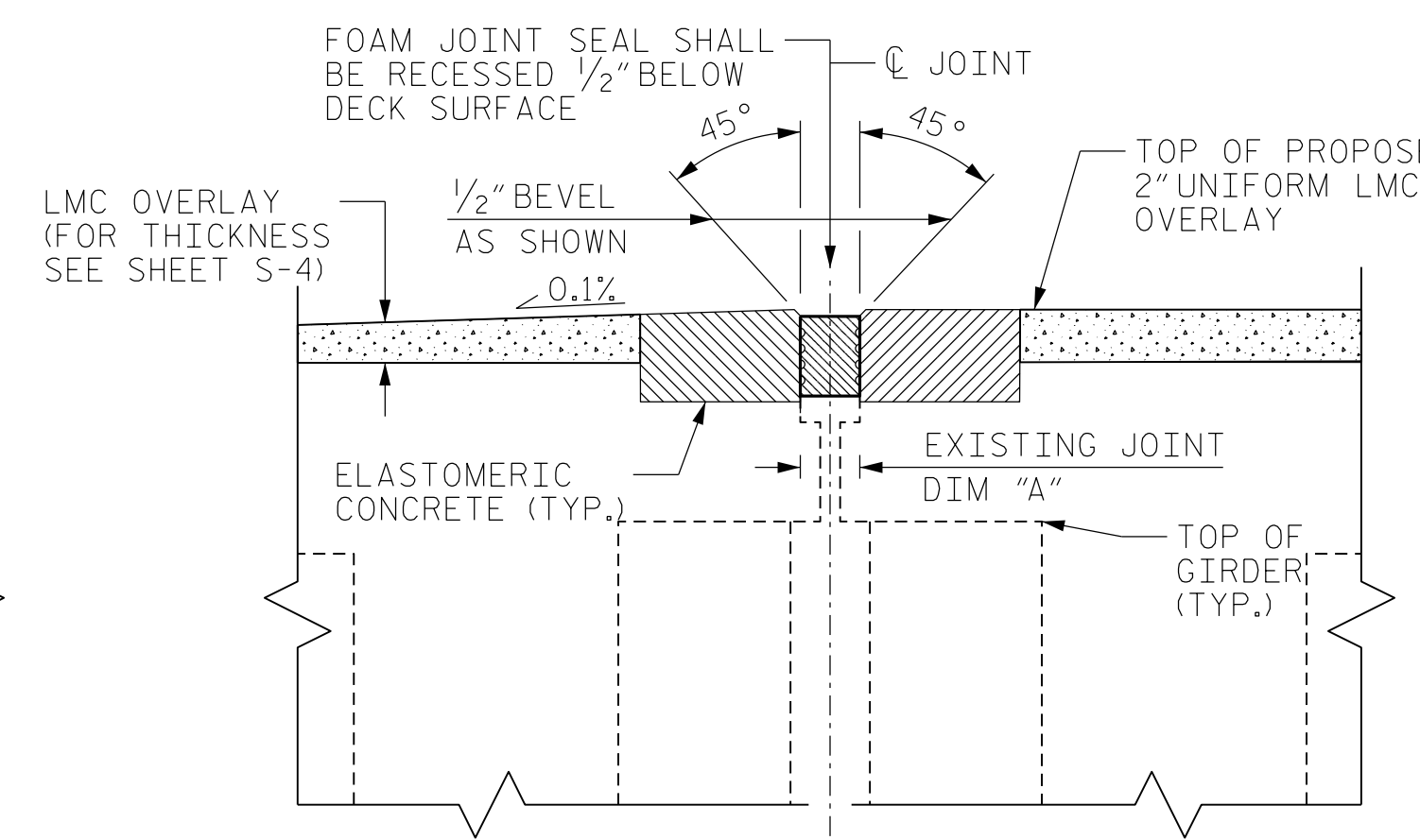
SECTION A-A
(PROPOSED JOINT SEAL)



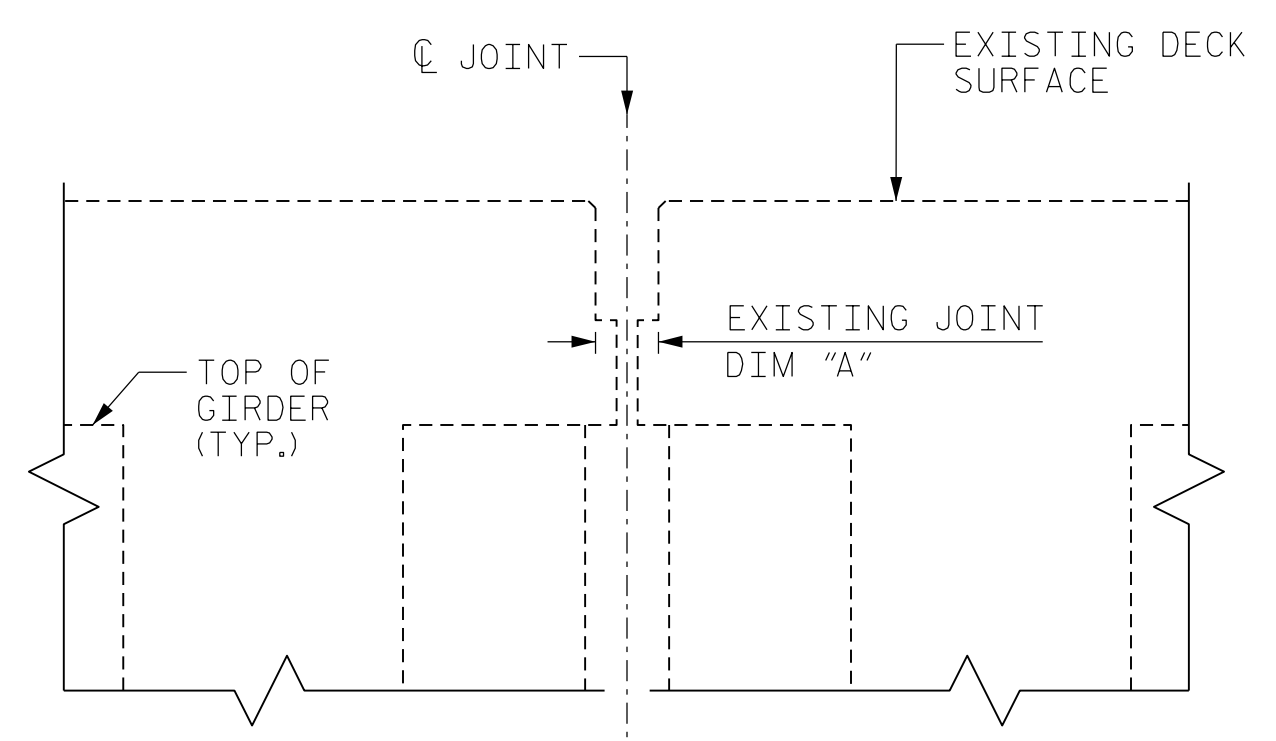
SECTION B-B
(EXISTING JOINT PRIOR TO LMC OVERLAY)



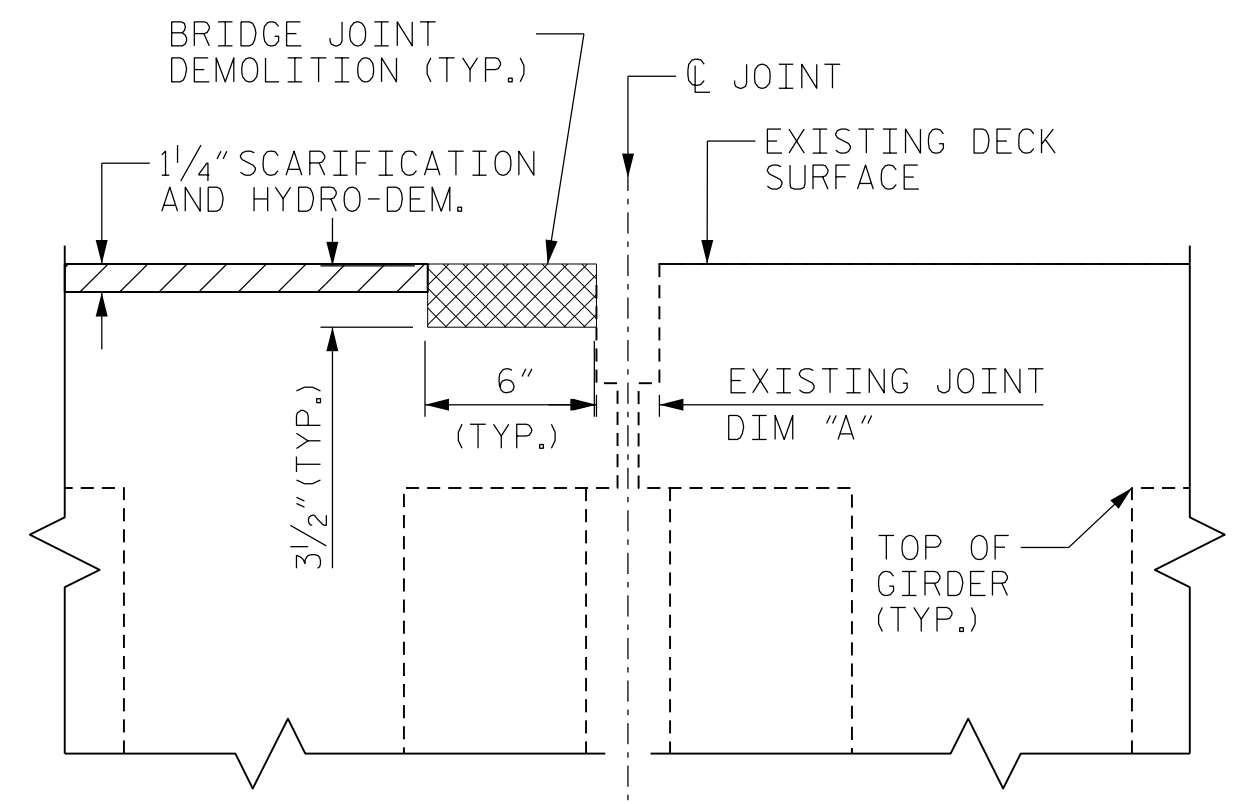
SECTION B-B
(SCARIFICATION AND HYDRO-DEMOLITION)



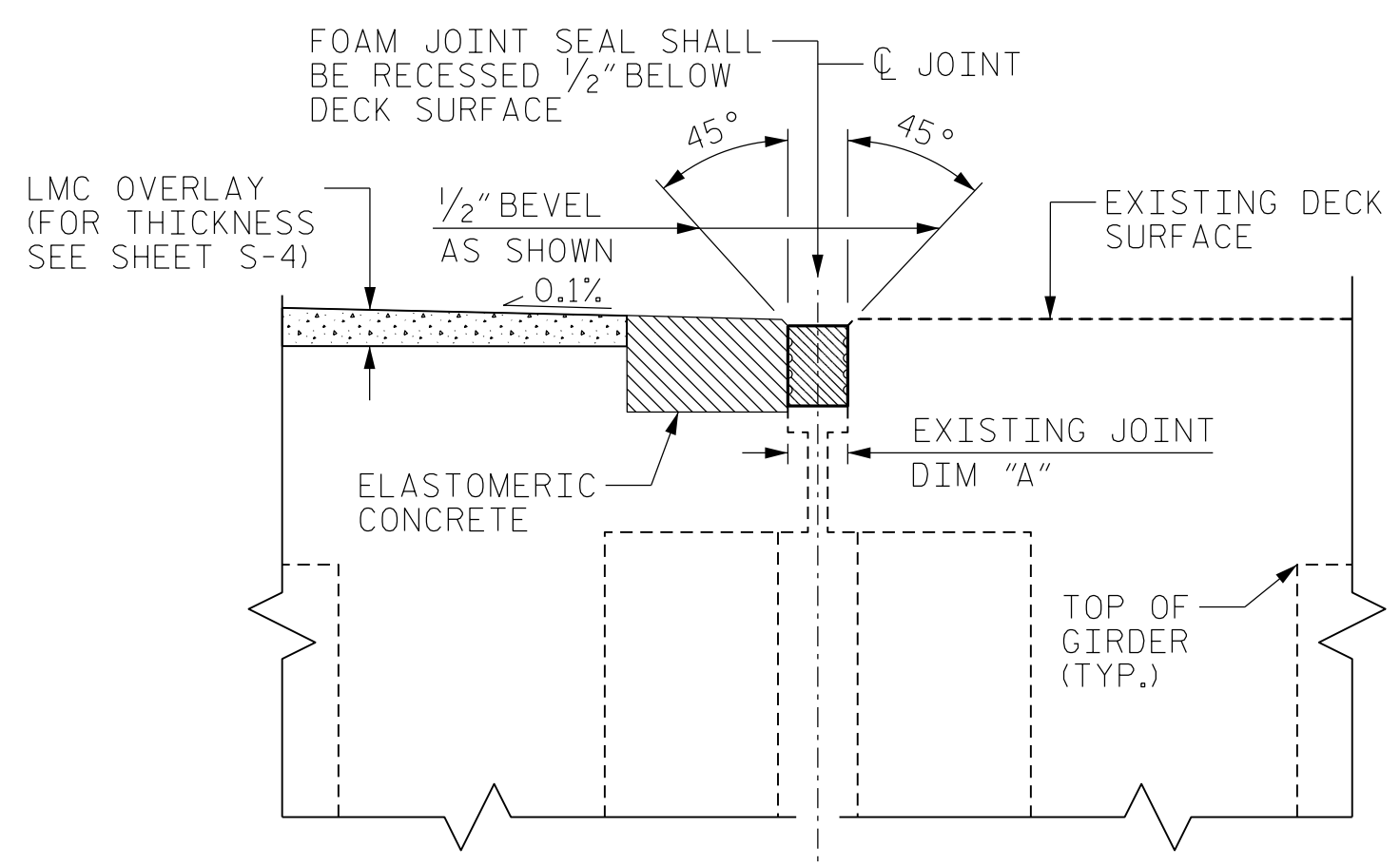
SECTION B-B
(PROPOSED FOAM JOINT SEAL)



SECTION C-C
(EXISTING JOINT PRIOR TO LMC OVERLAY)



SECTION C-C
(SCARIFICATION AND HYDRO-DEMOLITION)



SECTION C-C
(PROPOSED FOAM JOINT SEAL)

NOTES:

THE CONTRACTOR SHALL FIELD VERIFY THE EXISTING JOINT OPENING PRIOR TO ORDERING JOINT SEAL MATERIAL. IF THE ACTUAL OPENING VARIES FROM THE OPENING INDICATED IN THE DETAIL BY MORE THAN 1/4", NOTIFY THE ENGINEER. REVISION OF THE JOINT SEAL SIZE MIGHT BE NECESSARY.

THE MANUFACTURER IS TO PROVIDE THE NOMINAL UNCOMPRESSED SEAL WIDTH OF THE FOAM JOINT SEAL FOR THE SIZE OF THE OPENING ON THE PLANS AND ACCOMMODATE THE MINIMUM EXPANSION SHOWN ON THE PLANS.

FOAM JOINTS SHALL BE INSTALLED AS PER THE MANUFACTURER'S RECOMMENDATIONS.

THE CONTRACTOR SHALL TAKE CARE DURING JOINT REHAB OPERATIONS NOT TO DROP ANY MATERIAL THAT FALLS BELOW THE BRIDGE, WITHOUT PROTECTIVE DEVICES BELOW TO CATCH THE MATERIAL. ANY MATERIAL THAT FALLS BELOW THE BRIDGE SHALL BE CONTAINED, REMOVED AND DISPOSED OF BY THE CONTRACTOR AT NO EXTRA COST TO THE DEPARTMENT. IF THE ENGINEER DETERMINES THAT THE PROTECTIVE DEVICES ARE NOT ADEQUATE OR NOT BEING EMPLOYED, THE WORK SHALL BE SUSPENDED UNTIL ADEQUATE PROTECTION IS PROVIDED.

THE CONTRACTOR WILL NOT BE PERMITTED TO FORM THE JOINTS IN LIEU OF SAWING THE JOINT.

THE INSTALLED FOAM JOINT SHALL BE WATER TIGHT.

QUANTITIES SHOWN IN THE ELASTOMERIC CONCRETE FOR PRESERVATION TABLE BASED ON THE MINIMUM JOINT DEMOLITION SHOWN.

FOR EXCAVATION BELOW THE BOTTOM OF THE PLANNED JOINT DECK DEMOLITION, CONCRETE FOR DECK REPAIRS SHALL BE PLACED IN THE EXCAVATED AREA TO THE ELEVATION AT BOTTOM OF THE PROPOSED ELASTOMERIC CONCRETE FOR PRESERVATION HEADERS SHOWN.

FOR BRIDGE JOINT DEMOLITION, SEE SPECIAL PROVISIONS.

FOR FOAM JOINT SEALS FOR PRESERVATION, SEE SPECIAL PROVISIONS.

FOR ELASTOMERIC CONCRETE FOR PRESERVATION, SEE SPECIAL PROVISIONS.

FOR CONCRETE FOR DECK REPAIR, SEE SPECIAL REVISION.

FOR DIM "A", SEE TABLE 1 ON SHEET S-11

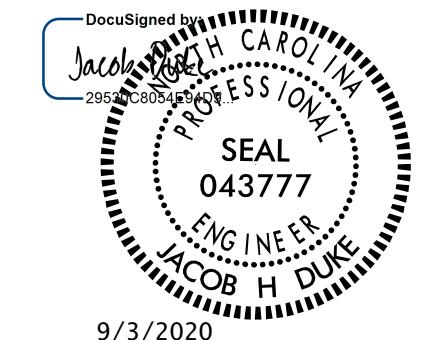
FOR JOINT QUANTITIES, SEE SHEET S-11.

FOR JOINT AT END BENT 2, REMOVE EXISTING JOINT MATERIAL AND INSTALL FOAM JOINT SEALS (SIMILAR TO SECTION E-E, PROPOSED JOINT SEAL).

BRIDGE JOINT DEMOLITION

PROJECT NO. 15BPR.24
BRUNSWICK COUNTY
BRIDGE NO. 090013

SHEET 1 OF 2



9/3/2020



STATE OF NORTH CAROLINA
DEPARTMENT OF TRANSPORTATION
RALEIGH

JOINT DETAILS

DRAWN BY : OMAR M. KHALAFALLA DATE : 10/2018
CHECKED BY : DIEGO A. AGUIRRE DATE : 10/2018
DESIGN ENGINEER OF RECORD : JACOB H. DUKE DATE : 10/2018

9/3/2020
GA:\2017\2012-Brunswick-13\Structures\15BPR.24_SMU.JT01.090013.dgn
User:jdbone

DOCUMENT NOT CONSIDERED
FINAL UNLESS ALL
SIGNATURES COMPLETED

301 FAYETTEVILLE ST., SUITE 1500
RALEIGH, NC 27601
(919) 882-7839
LICENSE # C-1506

| REVISIONS | | | | | | SHEET NO. |
|-----------|-----|-------|-----|-----|-------|--------------|
| NO. | BY: | DATE: | NO. | BY: | DATE: | S-10 |
| 1 | | | 3 | | | TOTAL SHEETS |
| 2 | | | 4 | | | 45 |