

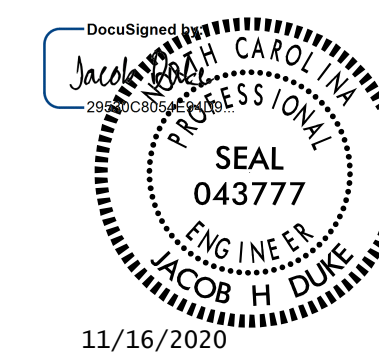
SUMMARY OF QUANTITIES

TOTAL BILL OF MATERIAL

	INCIDENTAL MILLING	ASPHALT CONCRETE SURFACE COURSE TYPE, S9.5C	ASPHALT BINDER FOR PLANT MIX	POLYUREA, PAVEMENT MARKING LINES (4", 20 MILS)	REMOVAL OF PAVEMENT MARKING LINES (4")	PERMAMENT RAISED PAVEMENT MARKING	GROOVING BRIDGE FLOORS	CLASS II, SURFACE PREPARATION	ELASTOMERIC BEARINGS	CONCRETE REPAIRS	SHOTCRETE REPAIRS	EPOXY RESIN INJECTION	INTEGRAL PILE JACKETING	FOAM JOINT SEALS FOR PRESERVATION	WATER LINE REMOVAL	VOLUMETRIC MIXER
	SO. YD.	TON	TON	LIN. FT.	LIN. FT.	EA.	SQ. FT.	SO. YD.	LUMP SUM	CU. FT.	CU. FT.	LIN. FT.	LF.	LIN. FT.	LUMP SUM	LUMP SUM
TOTAL	305	26	2	8069	5565	49	14417	2	LUMP SUM	20	439	848	5	720	LUMP SUM	LUMP SUM

	RAIL RETROFIT	LATEX MODIFIED CONCRETE OVERLAY-VERY EARLY STRENGTH	ELASTOMERIC CONCRETE FOR PRESERVATION	REPAIRS TO PRESTRESSED CONCRETE GIRDERS	BRIDGE JOINT DEMOLITION	EPOXY COATING	SCARIFYING BRIDGE DECK	SHOTBLASTING BRIDGE DECK	PLACING AND FINISHING LATEX MODIFIED CONC. OVERLAY - VERY EARLY STRENGTH	SILANE DECK TREATMENT	HYDRO-DEMOLITION OF BRIDGE DECK	TYPE I BRIDGE JACKING BRIDGE NO.13	CATHODIC PROTECTION SYSTEM-SUBMERGED ZINC BULK ANODE
	LIN. FT.	CU. YD.	CU. FT.	CU. FT.	SO. FT.	SO. FT.	SO. YD.	SO. YD.	SO. YD.	SO. YD.	SO. YD.	EA.	EA.
TOTAL	3795	103	78	191	244	6282	1790	4801	1790	4801	1790	6	50

PROJECT NO. 15BPR.24
BRUNSWICK COUNTY
 BRIDGE NO. 090013



STATE OF NORTH CAROLINA
 DEPARTMENT OF TRANSPORTATION
 RALEIGH

BILL OF MATERIAL

DRAWN BY : OMAR M. KHALAFALLA DATE : 10/2018
 CHECKED BY : DIEGO A. AGUIRRE DATE : 10/2018
 DESIGN ENGINEER OF RECORD : JACOB H. DUKE DATE : 10/2018

DOCUMENT NOT CONSIDERED
 FINAL UNLESS ALL
 SIGNATURES COMPLETED

301 FAYETTEVILLE ST., SUITE 1500
 RALEIGH, NC 27601
 (919) 882-7839
 LICENSE #: C-1506

REVISIONS						SHEET NO.
NO.	BY:	DATE:	NO.	BY:	DATE:	S-1
1			3			TOTAL SHEETS
2			4			45