

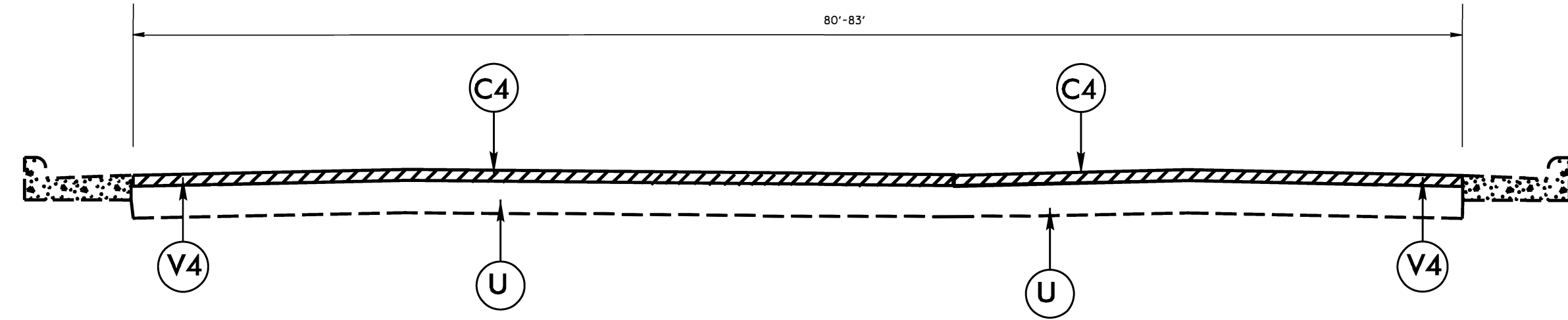
PAVEMENT SCHEDULE

C1	1¼" ASPHALT CONCRETE SURFACE COURSE, TYPE S9.5B, AT AN AVERAGE RATE OF 137.5 LBS. PER SQ. YD.
C2	1½" ASPHALT CONCRETE SURFACE COURSE, TYPE S9.5B, AT AN AVERAGE RATE OF 165 LBS. PER SQ. YD.
C3	1½" ASPHALT CONCRETE SURFACE COURSE, TYPE S9.5C, AT AN AVERAGE RATE OF 168 LBS. PER SQ. YD.
C4	3" ASPHALT CONCRETE SURFACE COURSE, TYPE S9.5C, AT AN AVERAGE RATE OF 168 LBS. PER SQ. YD. IN EACH OF 2 LAYERS

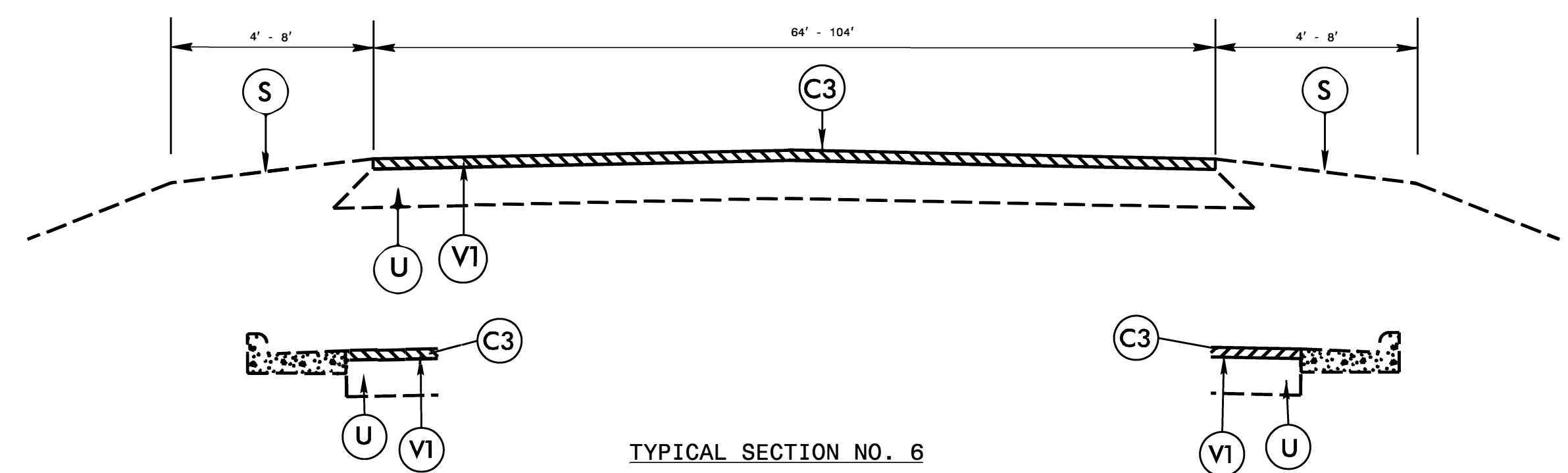
S	SHOULDER GRADING ASB REQUIRED (EXCEPT AT RESIDENTIAL AREAS)
U	EXISTING PAVEMENT
V1	1½" MILLING
V2	0" - 1½" MILLING
V3	0 - 1¼" Milling
V4	3" MILLING

PROJECT REFERENCE NO.
2021CPT.05.09.20921.1, etc.

SHEET NO.
15



TYPICAL SECTION NO. 5



TYPICAL SECTION NO. 6