

8/17/19

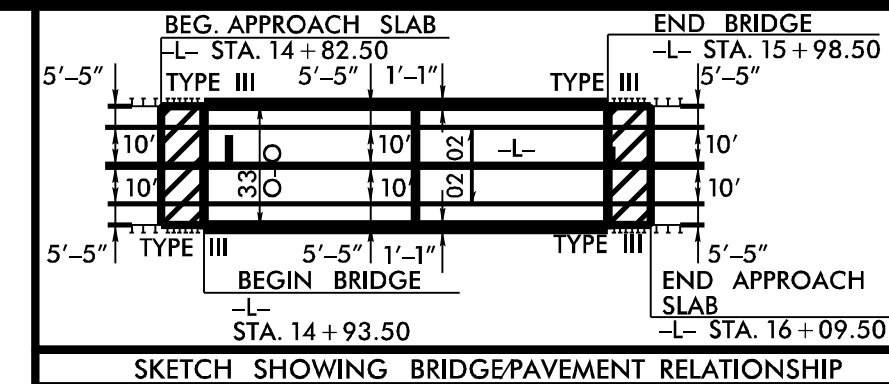
NOTE: IMPERVIOUS DIKES MAY BE MODIFIED AND/OR ELIMINATED AS DIRECTED.

NOTE: UTILIZE SPECIAL STILLING BASIN(S) WHERE APPLICABLE.

NOTE: UTILIZE COIR FIBER MATTING ADJACENT TO WETLANDS/JURISDICTIONAL AREAS, AND AS DIRECTED.

SHOULDER BERM GUTTER FROM STA. 14+67.81 TO STA. 14+81.94 LT. FROM STA. 14+67.81 TO STA. 14+81.94 RT.

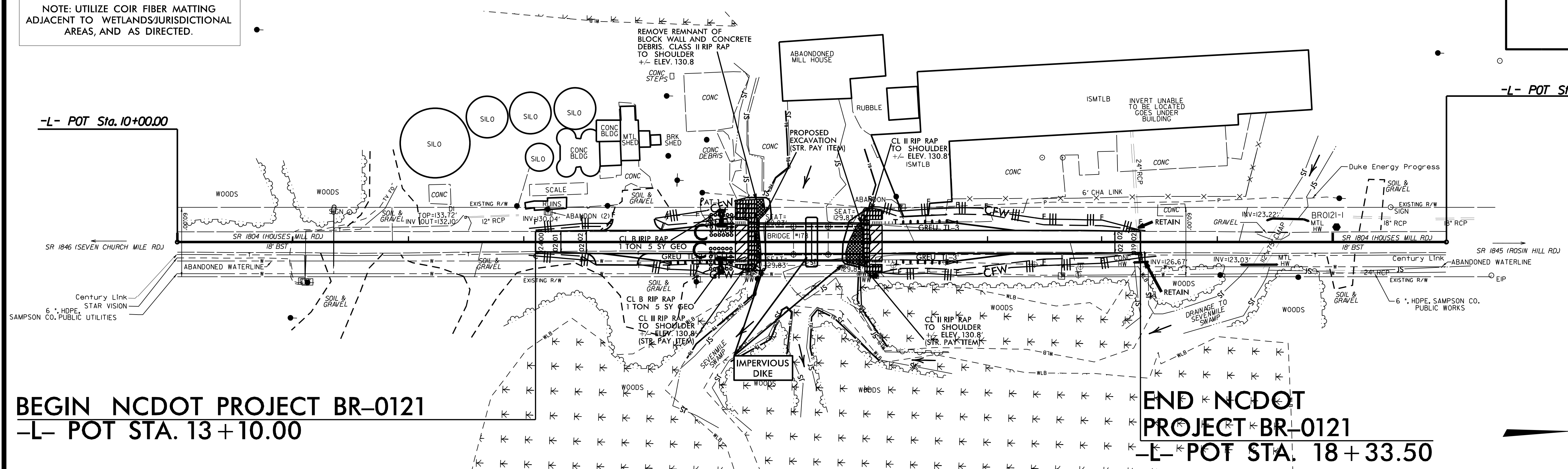
15+00



ETHERILL ENGINEERING TRANSPORTATION PLANNING/DESIGN - BRIDGE/STRUCTURE DESIGN CIVIL/SITE DESIGN - GIS/GPS - CONSTRUCTION OBSERVATION

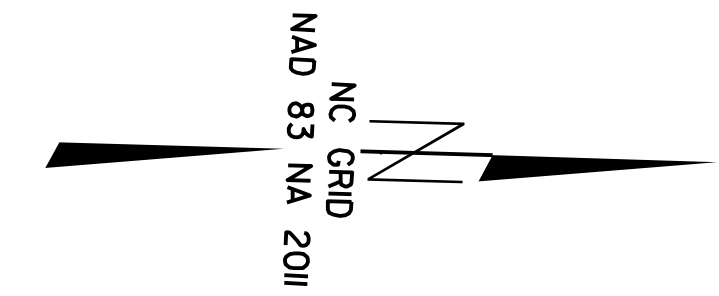
1223 Jones Franklin Rd. Raleigh, N.C. 27606 License No. F-0377 Bus: 919 851 8077 Fax: 919 851 8107

PROJECT REFERENCE NO. BR-0121 SHEET NO. EC-5/CONST.A ROADWAY DESIGN ENGINEER HYDRAULICS ENGINEER

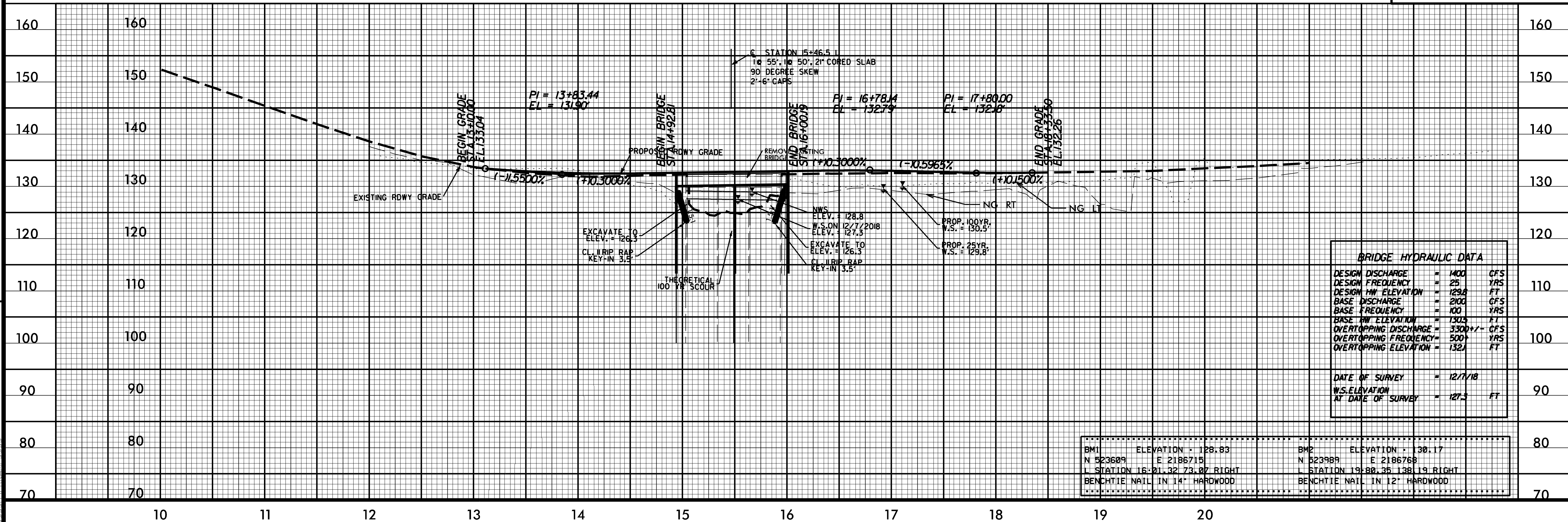


BEGIN NCDOT PROJECT BR-0121 -L- POT STA. 13+10.00

END NCDOT PROJECT BR-0121 -L- POT STA. 18+33.50



SEE SHEETS S-1 THRU S-? FOR STRUCTURE PLANS



BRIDGE HYDRAULIC DATA table with columns for discharge, frequency, and elevation.

Table with columns for BM1, BM2, stationing, and elevation data.

REVISIONS