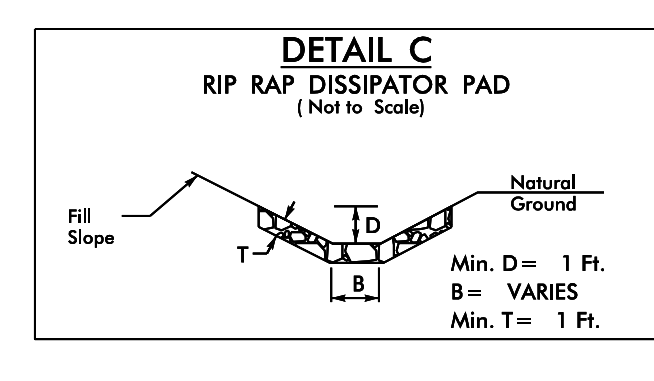
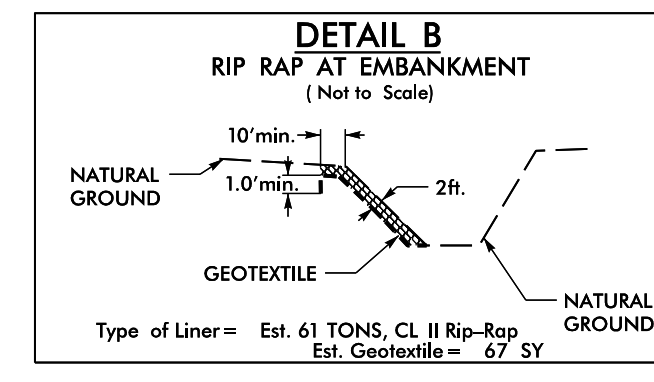
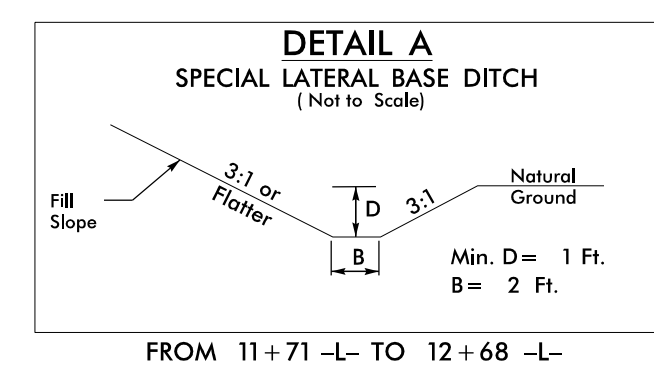
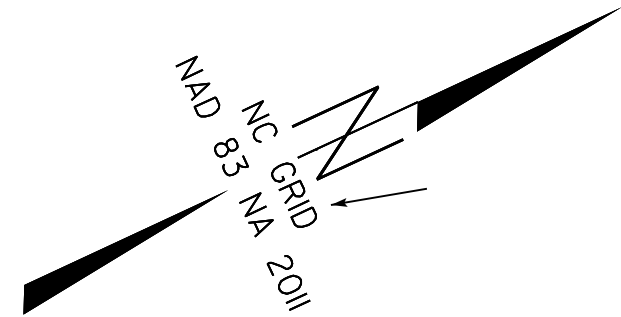
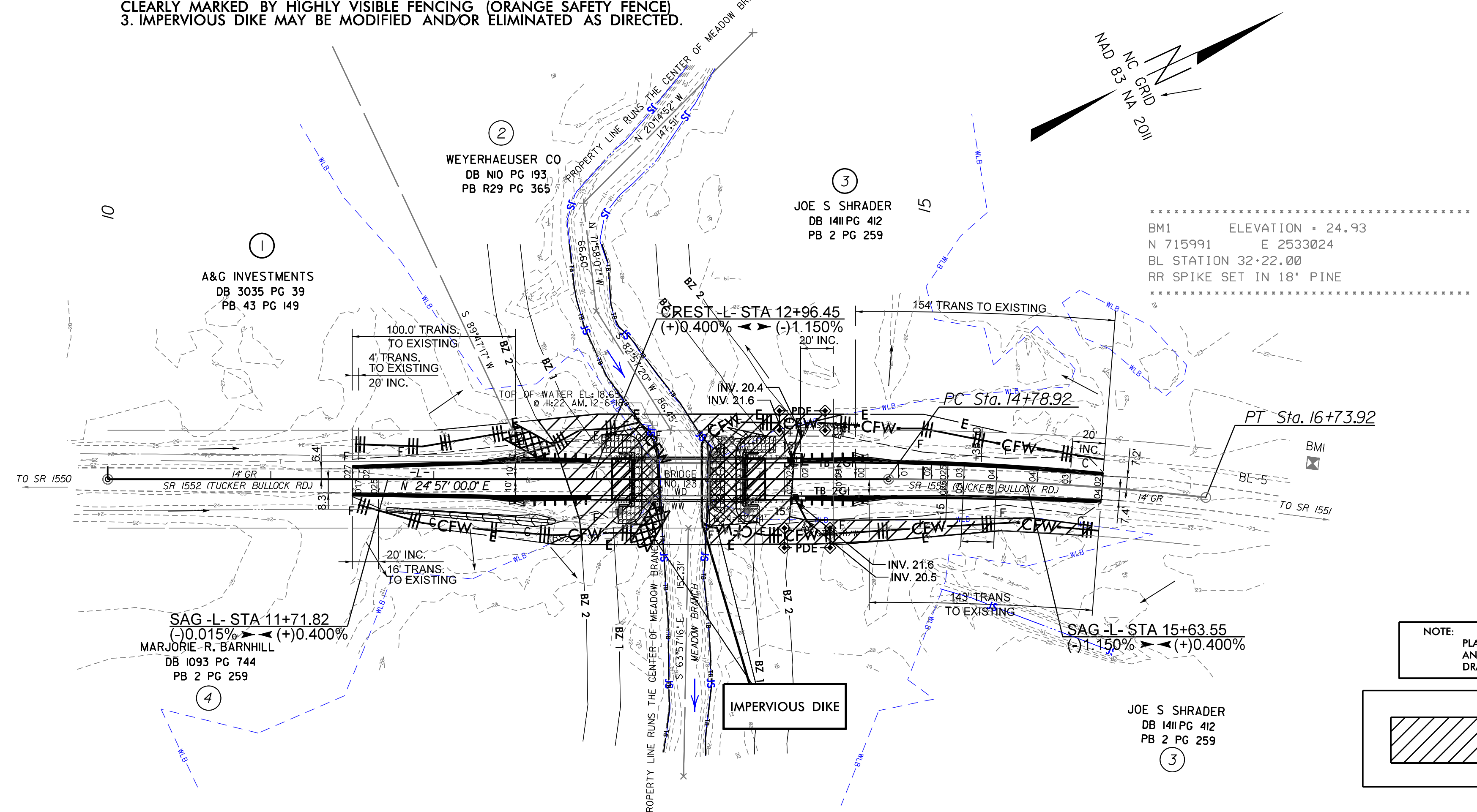


-L-
 PI Sta 15+76.52
 $\Delta = 6' 34" 19.8" (RT)$
 $D = 3' 22" 13.2"$
 $L = 195.00'$
 $T = 97.61'$
 $R = 1,700.00'$
 $SE = 4\%$
 $Lr = 120'$

NOTES:
 1. THE CONTRACTOR SHALL INSTALL SPECIAL SEDIMENT CONTROL FENCE OR COIR FIBER WATTLES IN LOW AREAS OF SILT FENCE AND UNDER THE BRIDGE, AS NEEDED OR DIRECTED BY THE ENGINEER.
 2. THE OUTSIDE BUFFER, WETLAND OR WATER BOUNDARY SHALL BE CLEARLY MARKED BY HIGHLY VISIBLE FENCING (ORANGE SAFETY FENCE).
 3. IMPERVIOUS DIKE MAY BE MODIFIED AND/OR ELIMINATED AS DIRECTED.



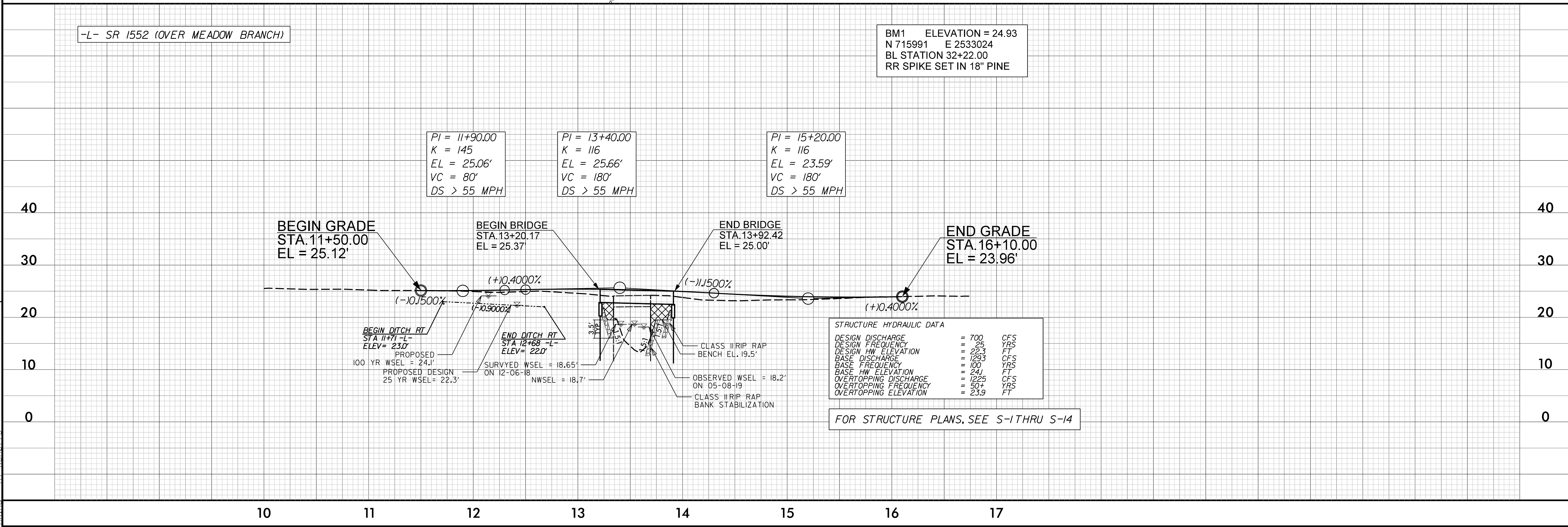
CLEARING AND GRUBBING
 EROSION CONTROL FOR
 CONSTRUCTION SHEET 4

NOTE:
 PLACE TEMPORARY ROCK SEDIMENT DAMS TYPE - B
 AND TEMPORARY ROCK SILT CHECKS TYPE - A AT
 DRAINAGE OUTLETS.

ENVIRONMENTALLY SENSITIVE AREA
 SEE PROJECT SPECIAL PROVISIONS

-L- SR 1552 (OVER MEADOW BRANCH)

BM1 ELEVATION = 24.93
 N 715991 E 2533024
 BL STATION 32+22.00
 RR SPIKE SET IN 18" PINE



REVISIONS
 BL 3

8/17/99
 19-DEC-2019 15:55
 G:\4201720_XX\SWU-Build Grant\BR-0120-D2_P1.ttt\123\Hydraulics\CADD\Erosion Control\BR-0120_EC_psh.dgn
 KCA073