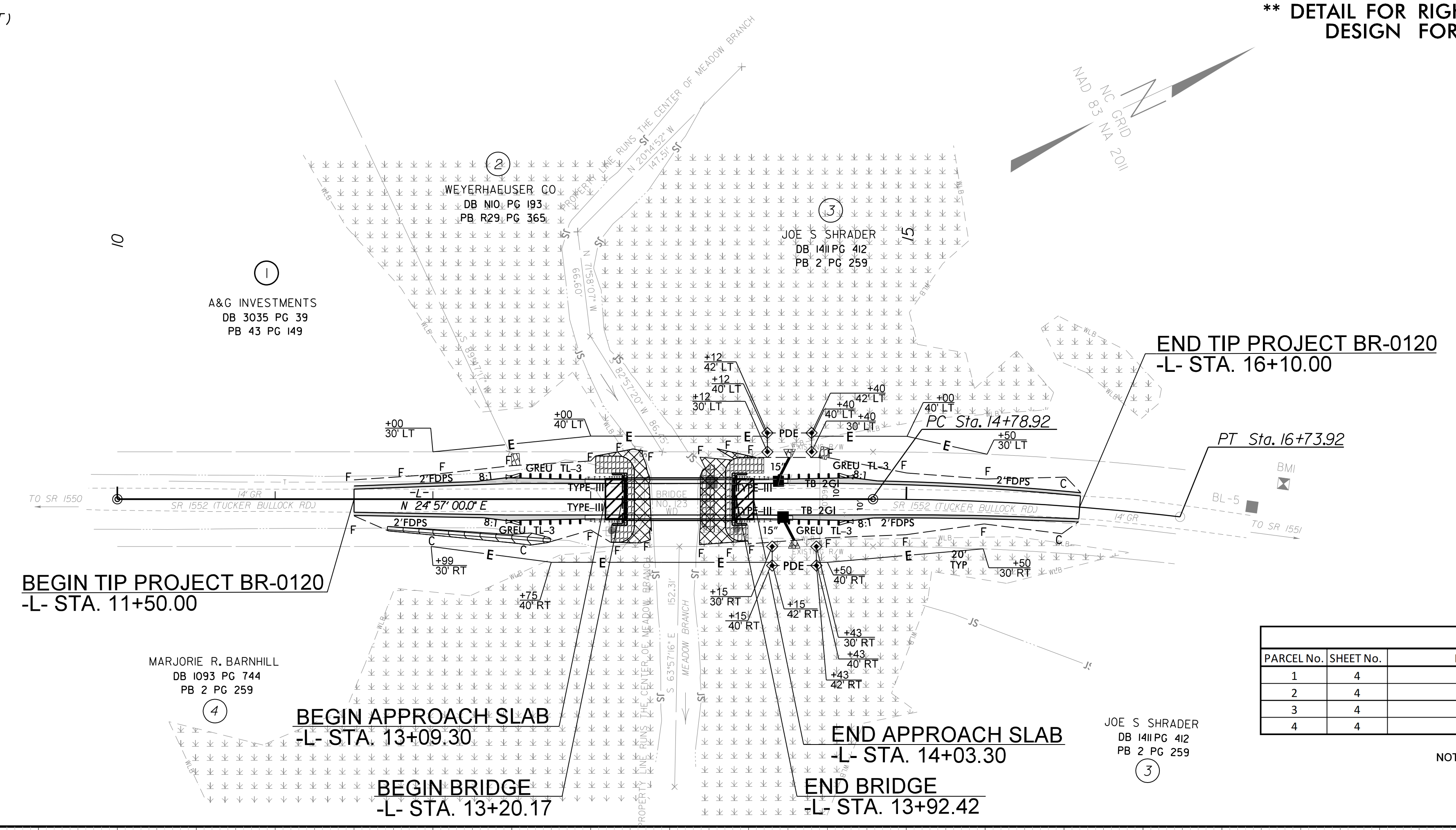


8/17/19

-L-  
 PI Sta 15+76.52  
 $\Delta = 6' 34" 19.8" (RT)$   
 $D = 3' 22" 13.2"$   
 $L = 195.00'$   
 $T = 97.61'$   
 $R = 1,700.00'$   
 $SE = 4\%$   
 $Lr = 120'$

**RIGHT OF WAY DETAIL SHEET**  
**\*\* DETAIL FOR RIGHT OF WAY MONUMENT DESIGN FOR REFERENCE ONLY**

PROJECT REFERENCE NO. <i>BR-0120</i>	SHEET NO. <i>4A</i>
R/W SHEET NO.	
ROADWAY DESIGN ENGINEER Samuel L. Cullum SEAL 043571 9/3/2020	HYDRAULICS ENGINEER Samuel L. Cullum SEAL 043571 9/3/2020
<b>DOCUMENT NOT CONSIDERED FINAL UNLESS ALL SIGNATURES COMPLETED</b>	
PREPARED IN THE OFFICE OF: <b>KCA</b> KISINGER CAMPO & ASSOCIATES	NC FIRM LICENSE No: C-1508 301 Fayetteville St., Suite 1500 Raleigh, NC 27601 (919)862-7839

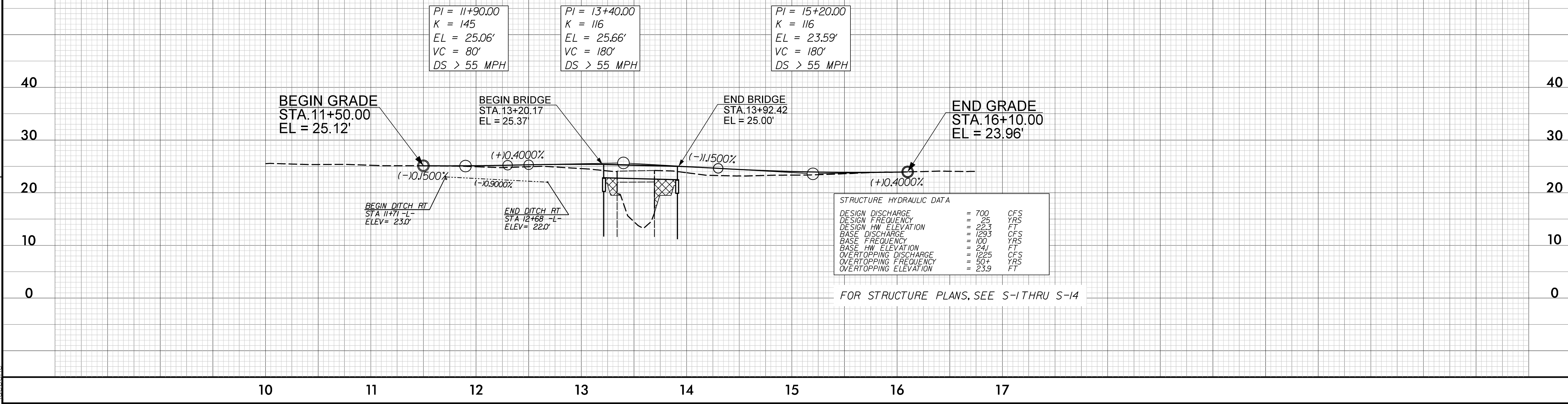


PARCEL ROW INDEX TABLE						
PARCEL No.	SHEET No.	PROPERTY OWNER NAME	TCE AREA (SF)	TCE AREA (AC)	PDE AREA (SF)	PDE AREA (AC)
1	4	A&G INVESTMENTS	112	0.003		
2	4	WEYERHAEUSER CO	808	0.019		
3	4	JOE S SHRADER	2728	0.063	673	0.015
4	4	MARJORIE R. BARNHILL	1191	0.027		

NOTE: CROSS SLOPES AT PROJECT TIE-INS ARE APPROXIMATE.  
 CONTRACTOR TO ENSURE APPROPRIATE CROSS SLOPE TRANSITIONS TO EXISTING CONDITION

-L- SR 1552 (OVER MEADOW BRANCH)

BM1 ELEVATION = 24.93  
 N 715991 E 2533024  
 BL STATION 32+22.00  
 RR SPIKE SET IN 18" PINE



STRUCTURE HYDRAULIC DATA		
DESIGN DISCHARGE	= 700	CFS
DESIGN FREQUENCY	= 25	YRS
DESIGN HW ELEVATION	= 22.3	FT
BASE DISCHARGE	= 1293	CFS
BASE FREQUENCY	= 100	YRS
BASE HW ELEVATION	= 24.1	FT
OVERTOPPING DISCHARGE	= 1225	CFS
OVERTOPPING FREQUENCY	= 50+	YRS
OVERTOPPING ELEVATION	= 23.9	FT

FOR STRUCTURE PLANS, SEE S-1 THRU S-14

REVISIONS

03-SEP-2020 10:51  
 BR-0120-Rwy\_psh\_row.dgn  
 ide@kca.com