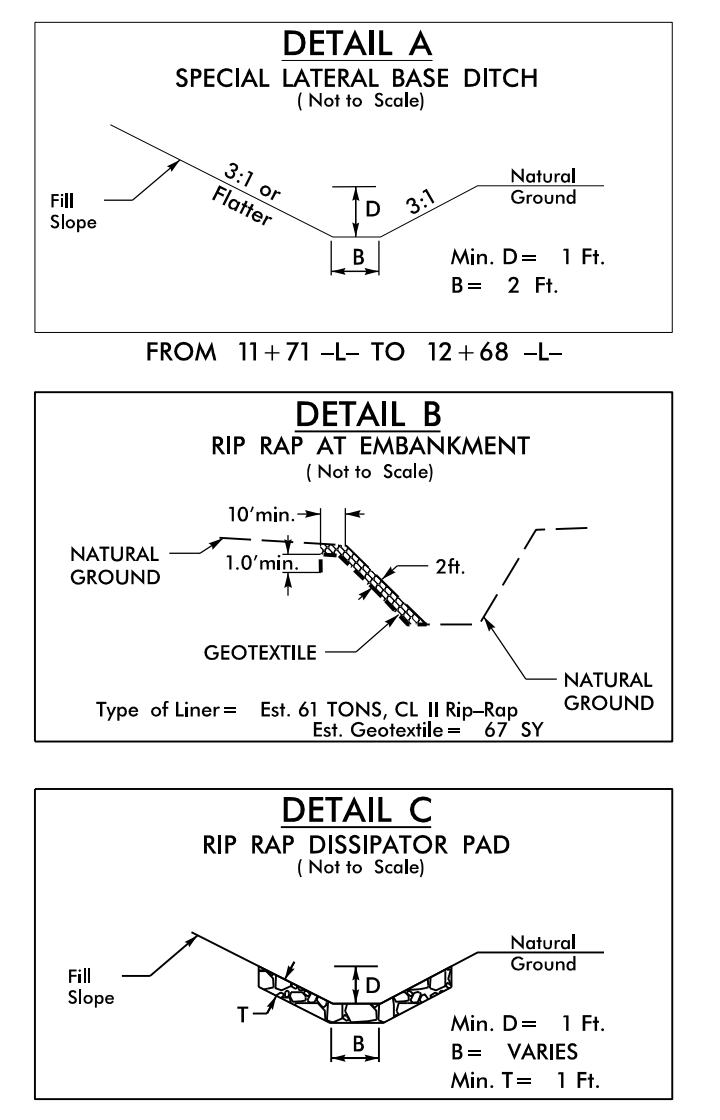
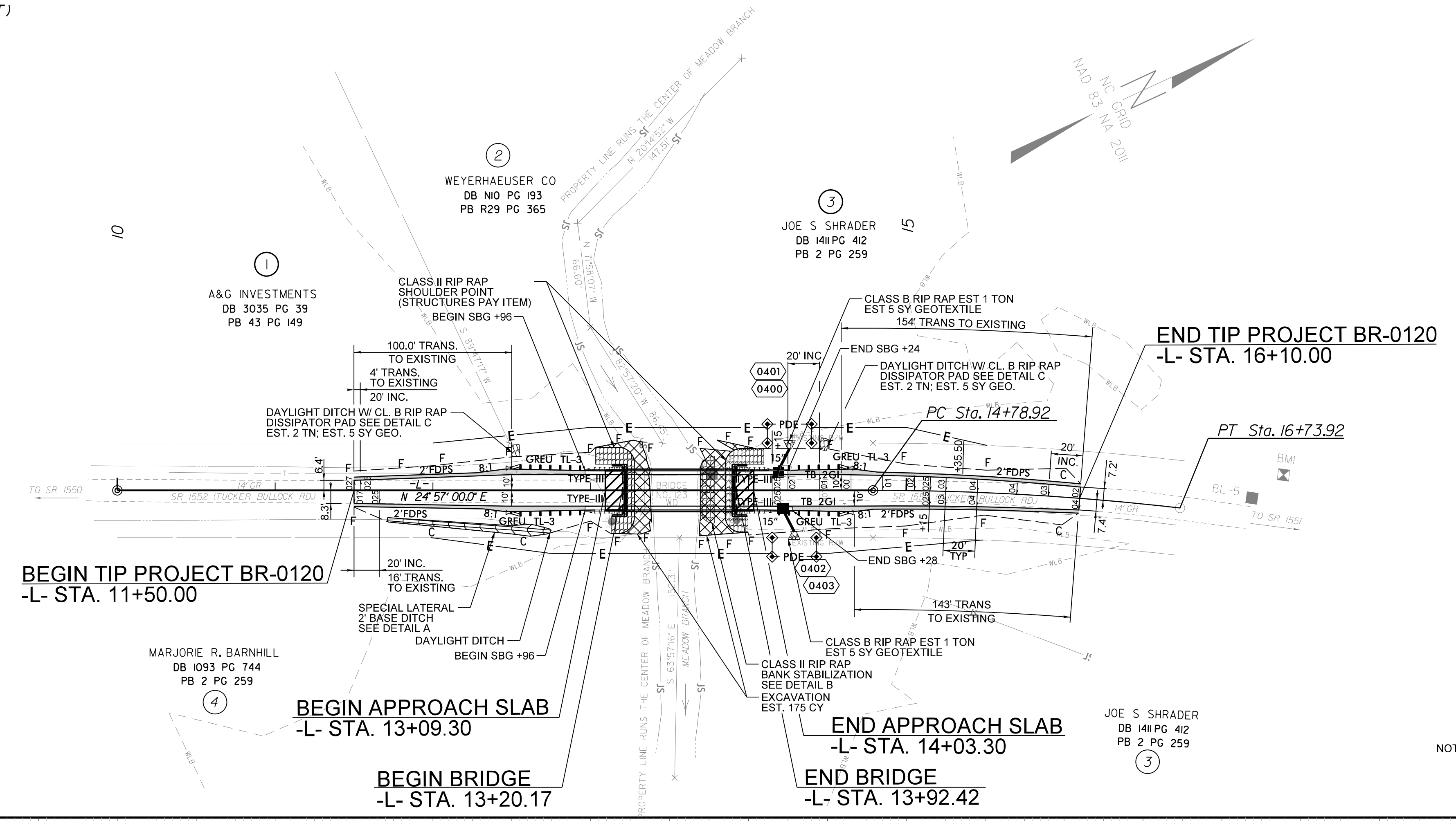


8/17/19

-L-
 PI Sta 15+76.52
 $\Delta = 6' 34" 19.8" (RT)$
 $D = 3' 22" 13.2"$
 $L = 195.00'$
 $T = 97.61'$
 $R = 1,700.00'$
 $SE = 4\%$
 $Lr = 120'$

PROJECT REFERENCE NO. BR-0120	SHEET NO. 4
R/W SHEET NO. ENGINEER	HYDRAULICS ENGINEER
DOCUMENT NOT CONSIDERED FINAL UNLESS ALL SIGNATURES COMPLETED	
PREPARED IN THE OFFICE OF: 	NC FIRM LICENSE No: C-1508 301 Fayetteville St., Suite 1500 Raleigh, NC 27601 (919) 862-7839

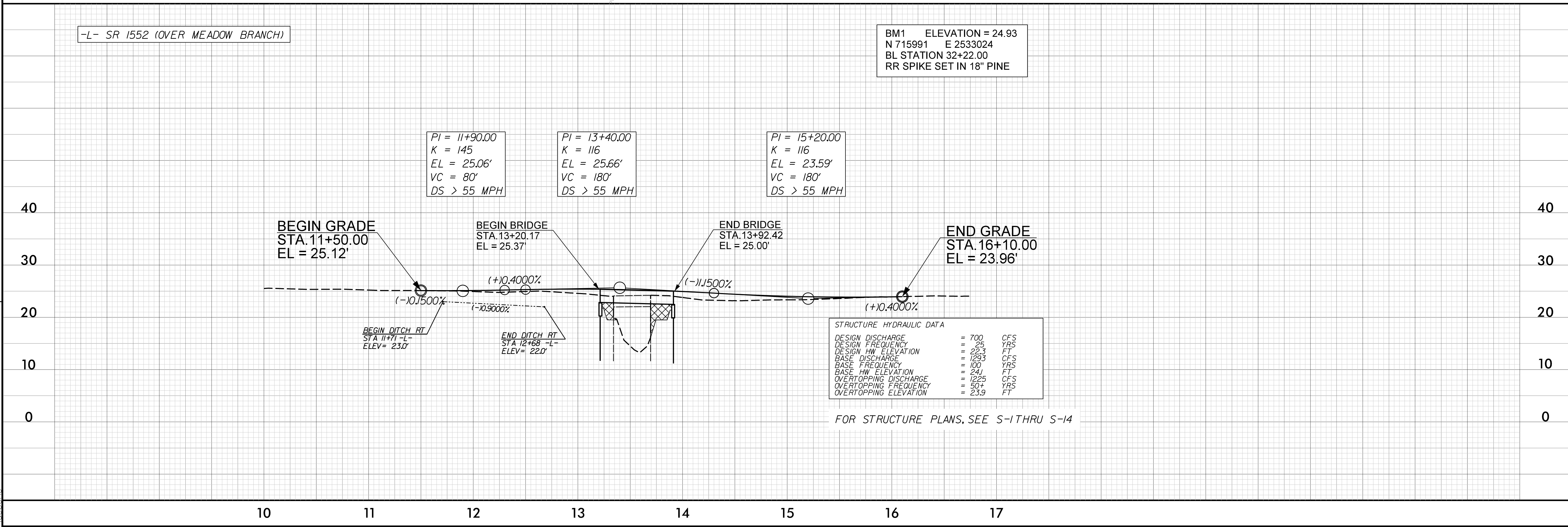


NOTE: CROSS SLOPES AT PROJECT TIE-INS ARE APPROXIMATE. CONTRACTOR TO ENSURE APPROPRIATE CROSS SLOPE TRANSITIONS TO EXISTING CONDITION

REVISIONS

-L- SR 1552 (OVER MEADOW BRANCH)

BM1 ELEVATION = 24.93
 N 715991 E 2533024
 BL STATION 32+22.00
 RR SPIKE SET IN 18" PINE



03-SEP-2020 10:51
 BR-0120-Rdy_psh.dgn
 ide.bone