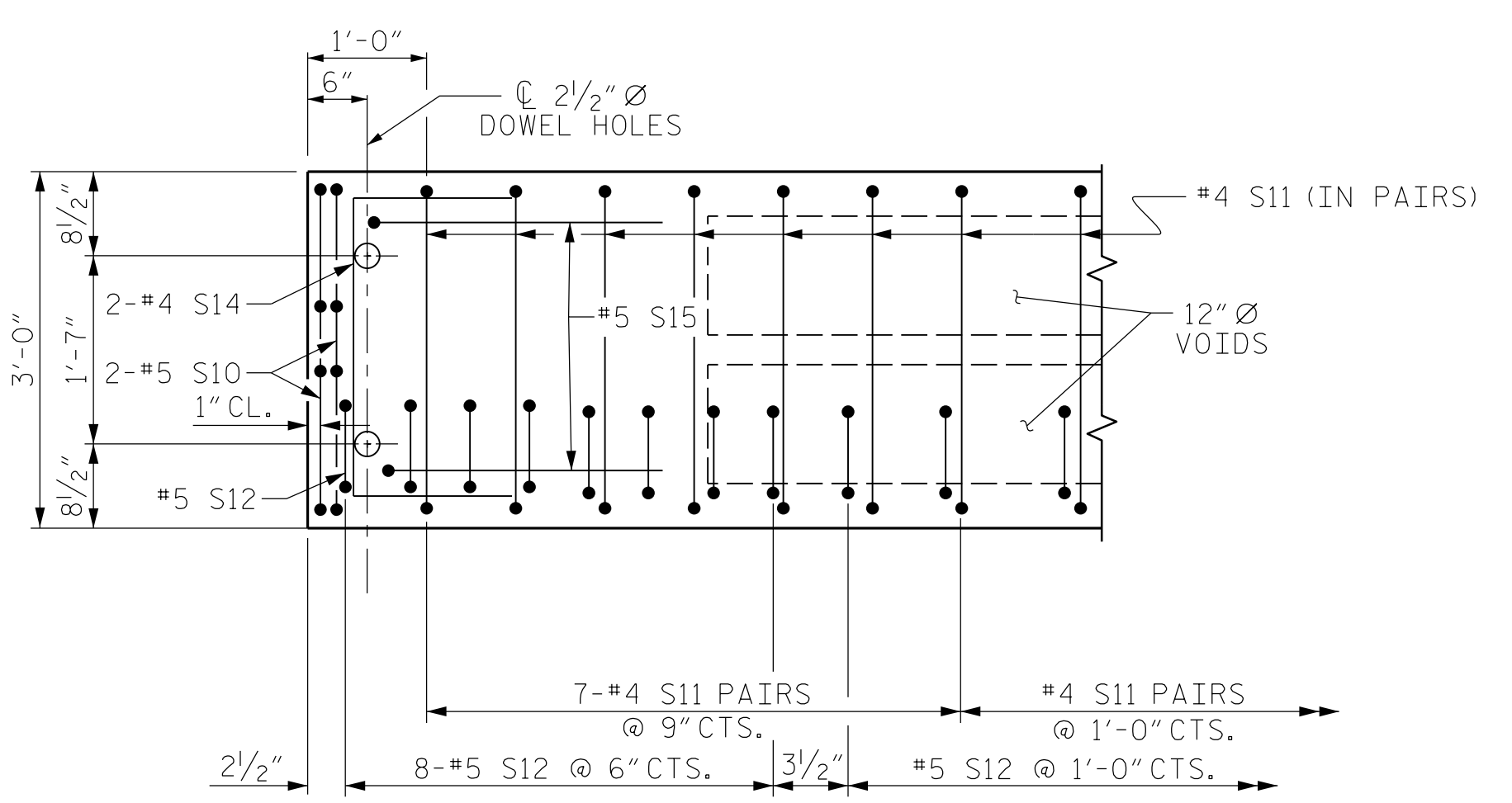
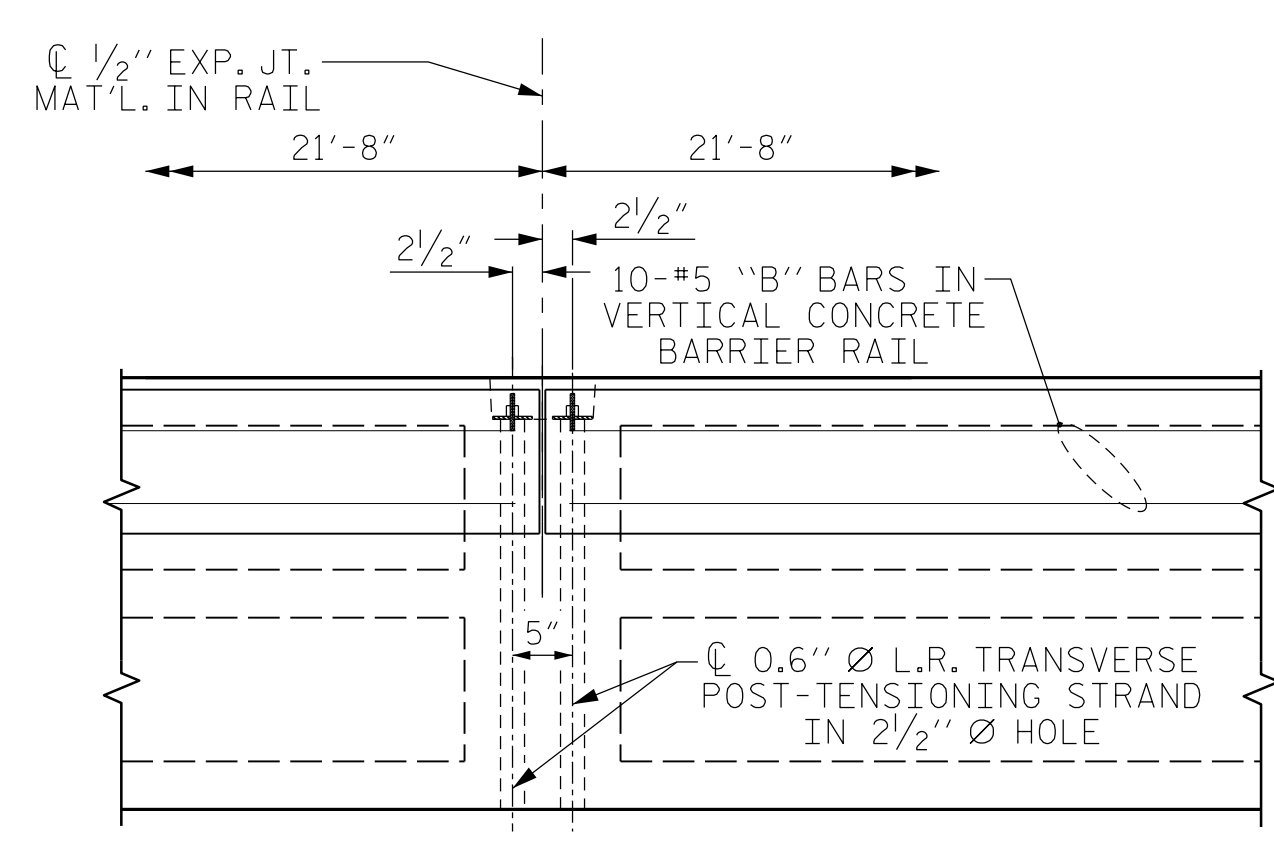


PLAN OF UNIT



DETAIL "A"

(TYPICAL EACH END OF UNIT)  
 NOTE: EXTERIOR UNIT SHOWN - INTERIOR UNIT SIMILAR EXCEPT OMIT #5 S12 BARS.

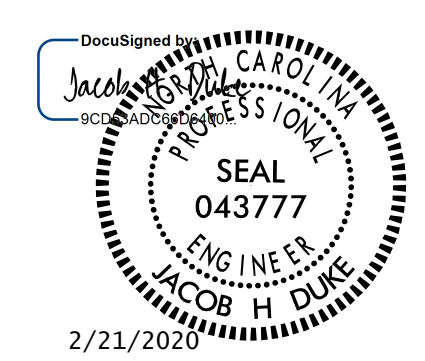


DETAIL "B"

#4 S11 BARS MAY BE SHIFTED AS NECESSARY TO MAINTAIN 1" CLEAR TO GROUDED RECESS AND 2.5" TRANSVERSE POST-TENSIONING STRAND HOLES

|  |              |   |  |
|--|--------------|---|--|
| DESIGN ENGINEER OF RECORD:                   |              |   |  |
| JACOB H. DUKE DATE: 01/2020                  |              |   |  |
| ASSEMBLED BY: DIEGO A. AGUIRRE DATE: 01/2020 |              | CHECKED BY: FIDEL L. FLORES DATE: 01/2020 |  |
| DRAWN BY: MAA 6/10                           | REV. 12/5/11 | MAA/AAC                                   |  |
| CHECKED BY: MKT 7/10                         | REV. 8/14    | MAA/TMG                                   |  |

2/21/2020  
 BR-0117.SMU.CS04.650052.dgn  
 jduke



DOCUMENT NOT CONSIDERED FINAL UNLESS ALL SIGNATURES COMPLETED

PROJECT NO. BR-0117  
NORTHAMPTON COUNTY  
 STATION: 14+26.35 -L-

SHEET 4 OF 6

STATE OF NORTH CAROLINA  
 DEPARTMENT OF TRANSPORTATION  
 RALEIGH  
 PLAN OF 65' UNIT  
 27'-10" CLEAR ROADWAY  
 90° SKEW  
 SPAN "B"

| REVISIONS |     |       |     |     |       | SHEET NO.    |
|-----------|-----|-------|-----|-----|-------|--------------|
| NO.       | BY: | DATE: | NO. | BY: | DATE: | S-8          |
| 1         |     |       | 3   |     |       | TOTAL SHEETS |
| 2         |     |       | 4   |     |       | 19           |

STD. NO. 24PCS\_30\_90S\_65L