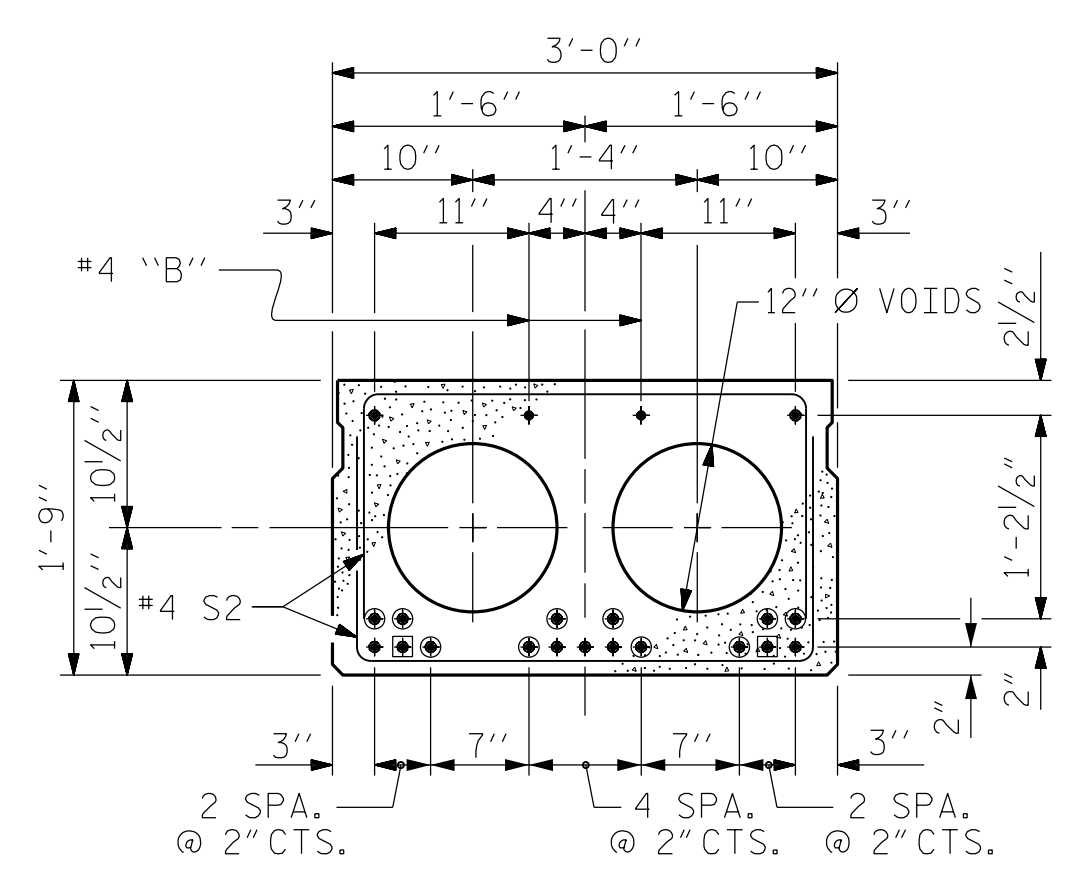


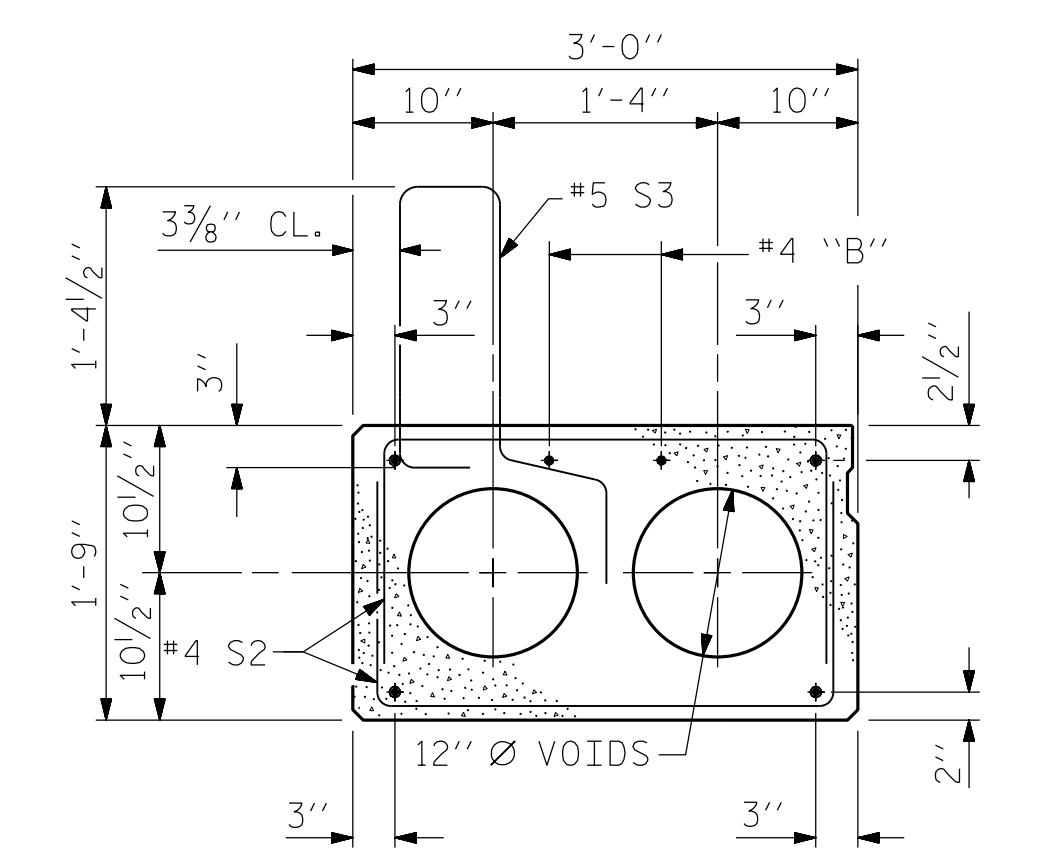
HALF SECTION AT INTERMEDIATE DIAPHRAGMS
 TYPICAL SECTION
 HALF SECTION THROUGH VOIDS

* - THE MAXIMUM BARRIER RAIL HEIGHT AND ASPHALT THICKNESS IS SHOWN. THE HEIGHT OF THE BARRIER RAIL AND ASPHALT THICKNESS VARIES WHILE THE TOP OF THE BARRIER RAIL FOLLOWS THE PROFILE OF THE GUTTERLINE. FOR RAIL HEIGHT DETAILS AND ASPHALT THICKNESS SEE THE "VERTICAL CONCRETE BARRIER RAIL SECTION" DETAIL.



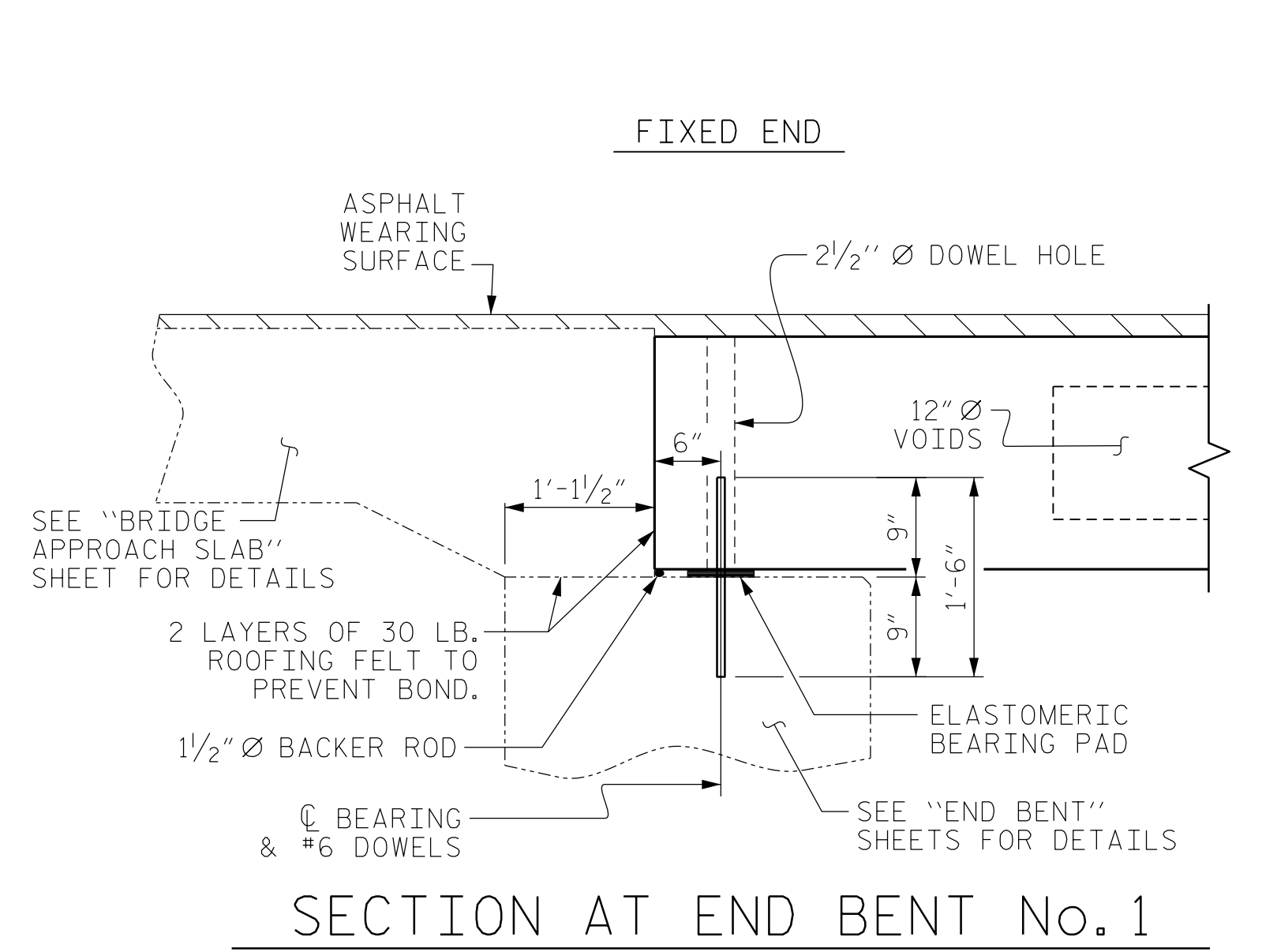
INTERIOR SLAB SECTION (30' UNIT)
 (9 STRANDS REQUIRED)

0.6" Ø LOW RELAXATION STRAND LAYOUT

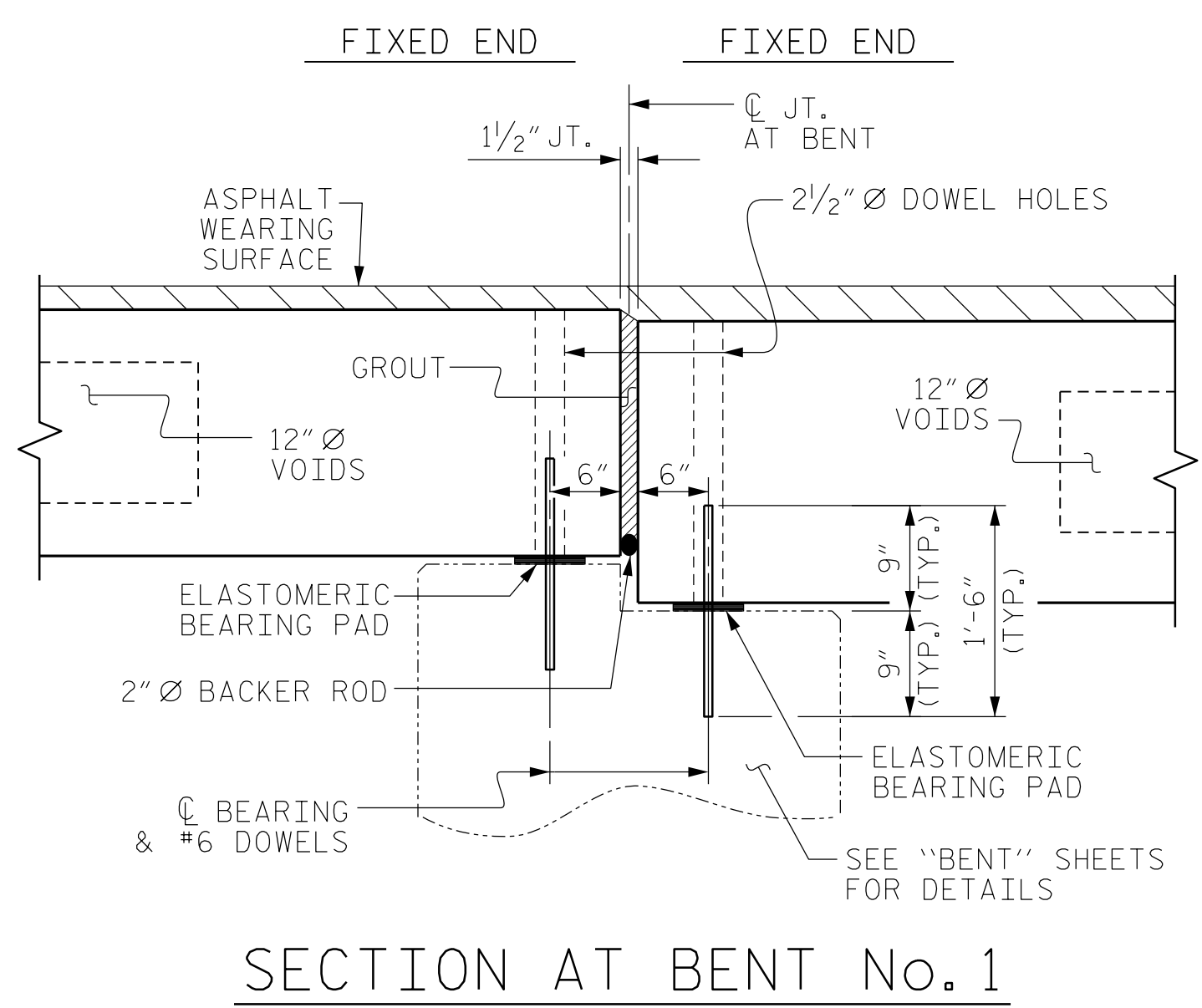


EXT. SLAB SECTION
 (FOR PRESTRESSED STRAND LAYOUT, SEE INTERIOR SLAB SECTION.)

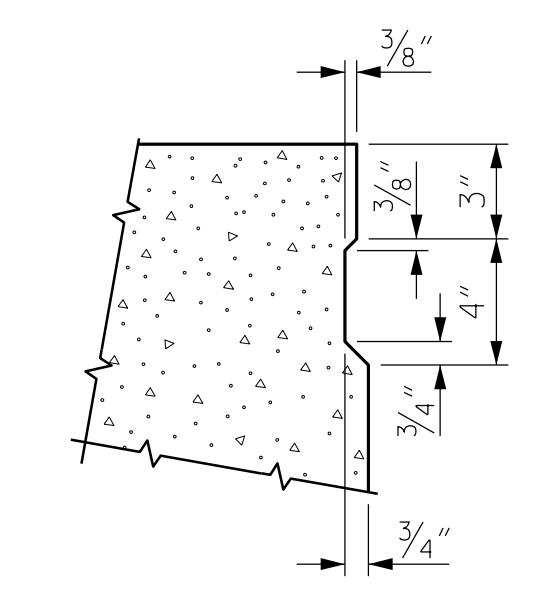
- BOND SHALL BE BROKEN ON THESE STRANDS FOR A DISTANCE OF 2'-0" FROM END OF CORED SLAB UNIT. SEE STANDARD SPECIFICATIONS, ARTICLE 1078-7.
- OPTIONAL FULL LENGTH DEBONDED STRANDS. THESE STRANDS ARE NOT REQUIRED. IF THE FABRICATOR CHOOSES TO INCLUDE THESE STRANDS IN THE CORED SLAB UNIT, THE STRANDS SHALL BE DEBONDED FOR THE FULL LENGTH OF THE UNIT AT NO ADDITIONAL COST. SEE STANDARD SPECIFICATIONS, ARTICLE 1078-7.



SECTION AT END BENT No. 1

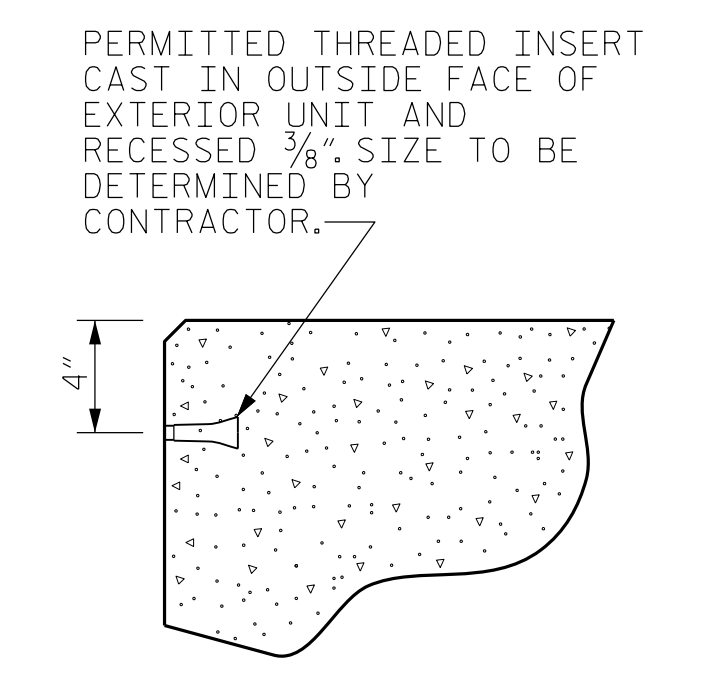


SECTION AT BENT No. 1

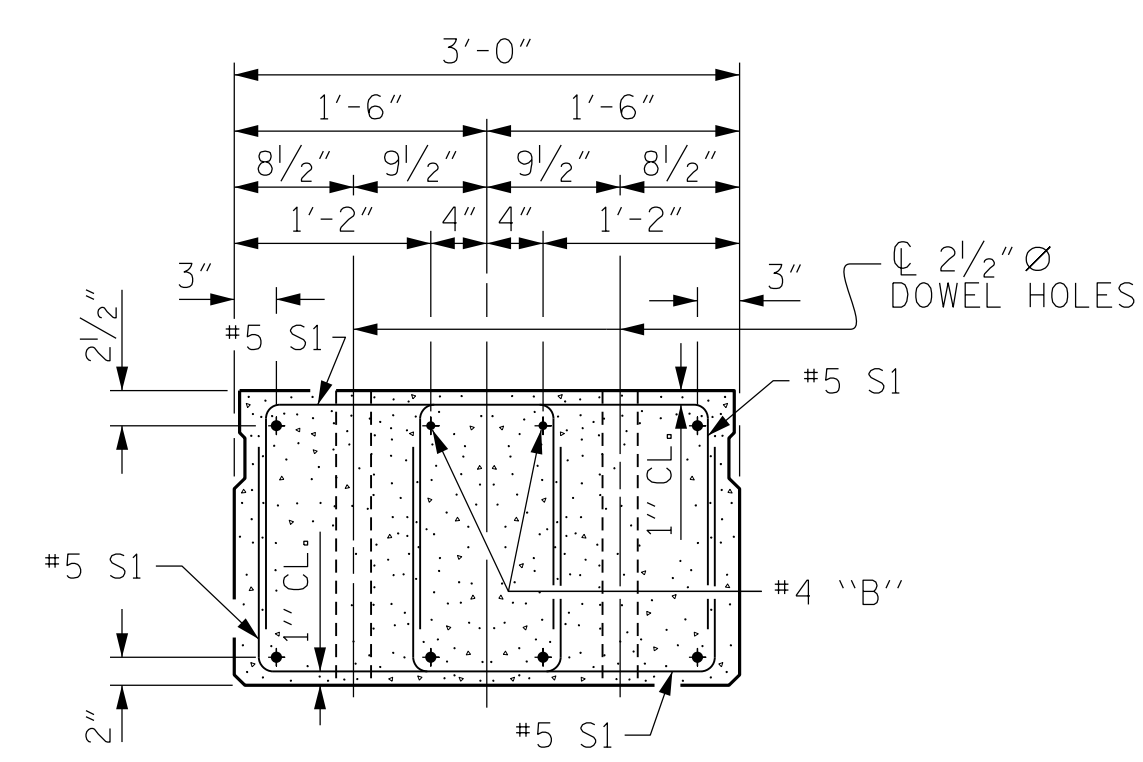


SHEAR KEY DETAIL
 NOTE: OMIT SHEAR KEY ON OUTSIDE FACE OF EXTERIOR CORED SLABS.

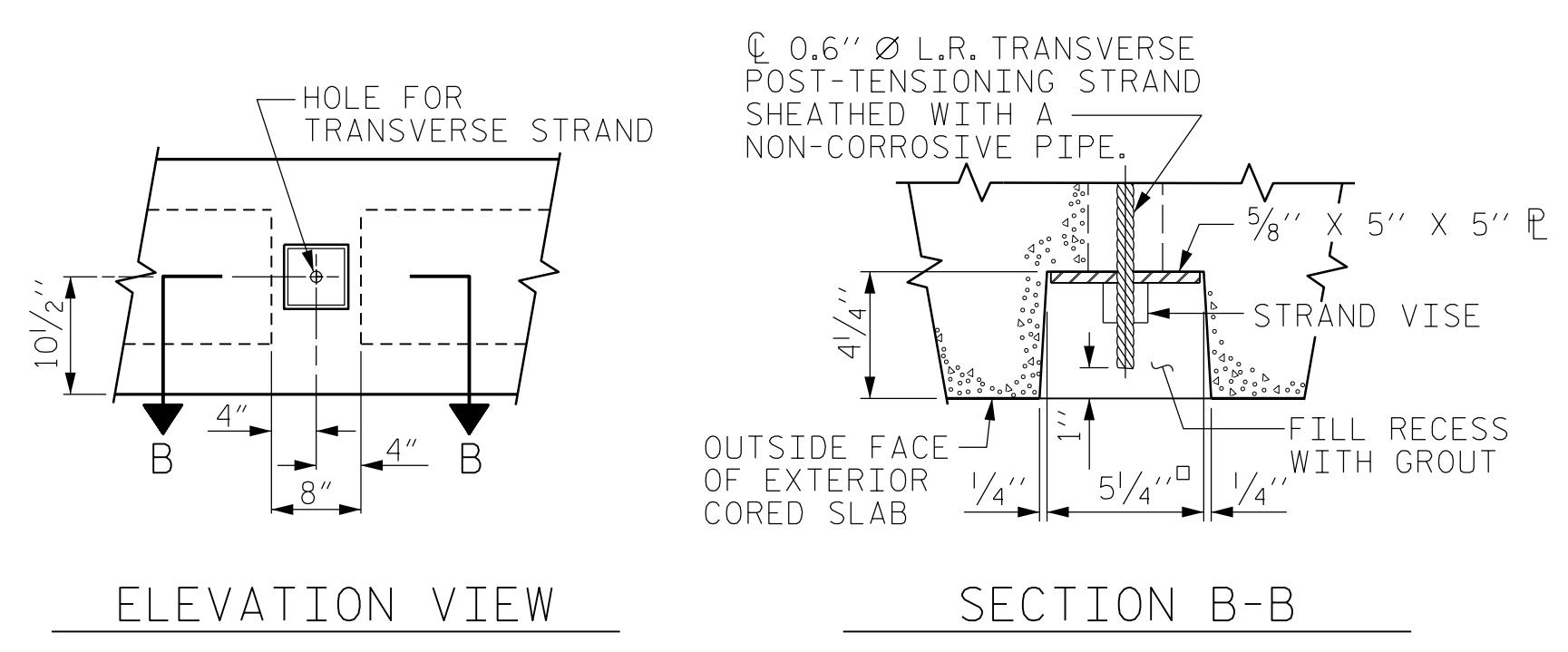
DEBONDING LEGEND



THREADED INSERT DETAIL



END ELEVATION
 SHOWING PLACEMENT OF DOUBLE STIRRUPS AND LOCATION OF DOWEL HOLES. (STRAND LAYOUT NOT SHOWN.)
 INTERIOR SLAB UNIT SHOWN-EXTERIOR SLAB UNIT SIMILAR EXCEPT SHEAR KEY LOCATION.



ELEVATION VIEW
 SECTION B-B
 GROUTED RECESS AT END OF POST-TENSIONED STRAND OF CORED SLABS

FOR FIBER OPTIC CONDUIT SYSTEM, SEE SPECIAL PROVISIONS.

DESIGN ENGINEER OF RECORD:	JACOB H. DUKE	DATE:	01/2020
ASSEMBLED BY:	DIEGO A. AGUIRRE	DATE:	01/2020
CHECKED BY:	FIDEL L. FLORES	DATE:	01/2020
DRAWN BY:	DGE 5/09	REV.	8/14
CHECKED BY:	BCH 6/09	MAA/TMG	

2/21/2020
 BR-0117.SMU.CS01.650052.dgn
 jduke

DOCUMENT NOT CONSIDERED FINAL UNLESS ALL SIGNATURES COMPLETED

DocuSigned by:
 Jacob H. Duke
 PROFESSIONAL ENGINEER
 SEAL 043777
 ENGINEER
 JACOB H. DUKE
 2/21/2020
KCA
 KISINGER CAMPO & ASSOCIATES
 301 FAYETTEVILLE ST., SUITE 1500
 RALEIGH, NC 27601 (919) 882-7839
 NC FIRM LICENSE: C-1506

PROJECT NO. BR-0117
 NORTHAMPTON COUNTY
 STATION: 14+26.35 -L-

SHEET 1 OF 6

STATE OF NORTH CAROLINA DEPARTMENT OF TRANSPORTATION RALEIGH					
STANDARD 3'-0" X 1'-9" PRESTRESSED CONCRETE CORED SLAB UNIT 90° SKEW SPAN 'A'					
REVISIONS					
NO.	BY:	DATE:	NO.	BY:	DATE:
1			3		
2			4		
SHEET NO.					S-5
TOTAL SHEETS					19

STD. NO. 21" PCS2_30_90S