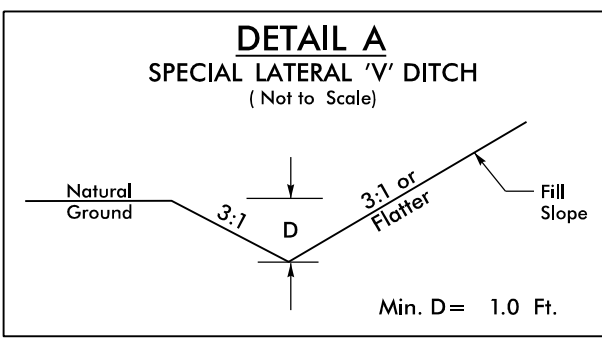
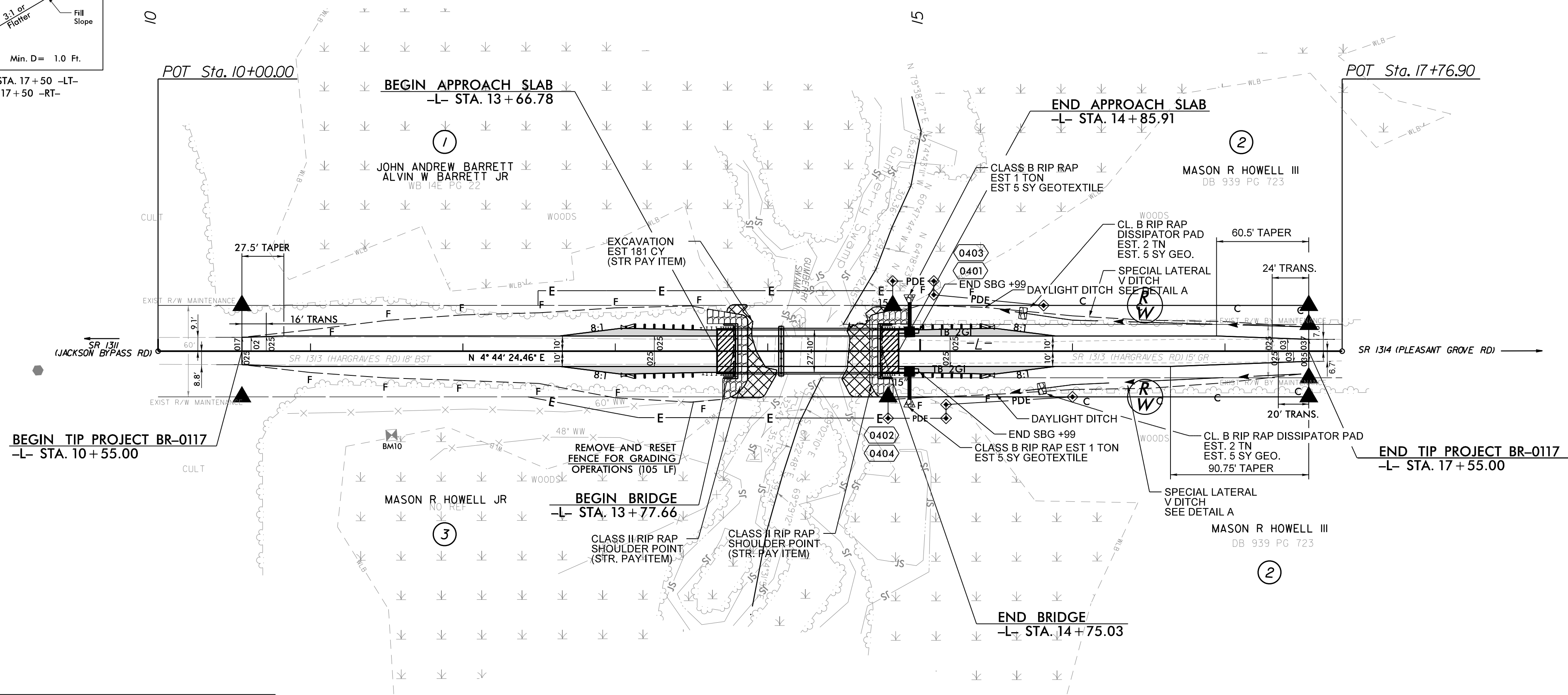


8/17/19



FROM STA. 15+43 TO STA. 17+50 -LT-
STA. 15+50 TO STA. 17+50 -RT-



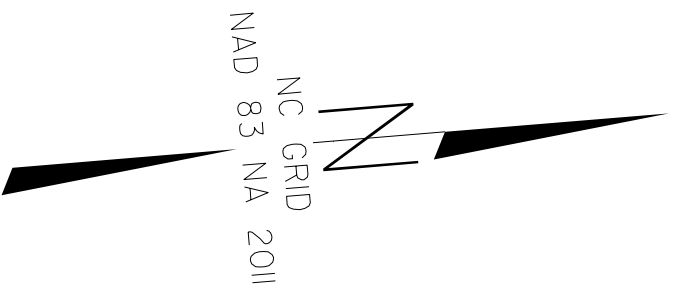
2/24/2020

DocuSigned by:
John P. Mayers

DocuSigned by:
Ali Taylor

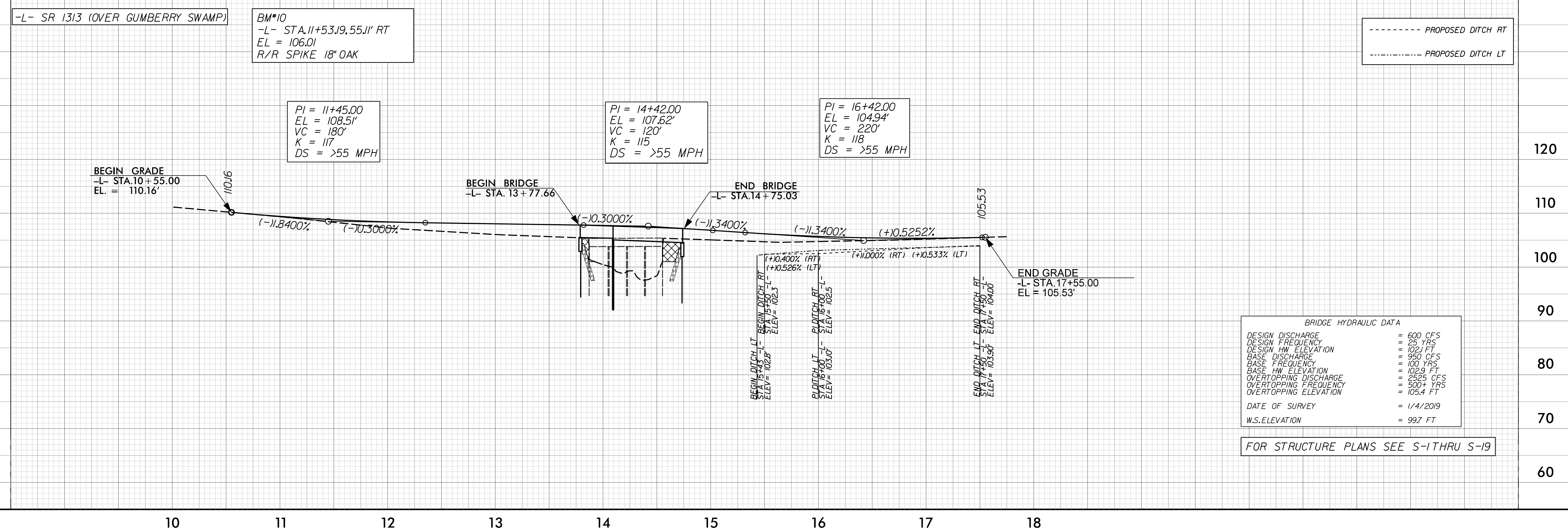
**DOCUMENT NOT CONSIDERED FINAL
UNLESS ALL SIGNATURES COMPLETED**

PREPARED IN THE OFFICE OF: **KCA** KISINGER CAMPO & ASSOCIATES
NC FIRM LICENSE NO. C-1508
301 Fayetteville St., Suite 1500
Raleigh, NC 27601
(919) 862-7839



NOTES:

1. ALL BRIDGE ANCHOR UNITS ARE TYPE III.
2. ALL GUARDRAIL END UNITS ARE GREU TL-3.
3. FOR RW STATION AND OFFSETS SEE SHEET 4A.



BRIDGE HYDRAULIC DATA	
DESIGN DISCHARGE	= 600 CFS
DESIGN FREQUENCY	= 25 YRS
DESIGN HW ELEVATION	= 102.1 FT
BASE DISCHARGE	= 950 CFS
BASE FREQUENCY	= 100 YRS
BASE HW ELEVATION	= 102.9 FT
OVERTOPPING DISCHARGE	= 2525 CFS
OVERTOPPING FREQUENCY	= 500+ YRS
OVERTOPPING ELEVATION	= 105.4 FT
DATE OF SURVEY	= 1/4/2019
W.S. ELEVATION	= 99.7 FT

FOR STRUCTURE PLANS SEE S-1 THRU S-19

REVISIONS