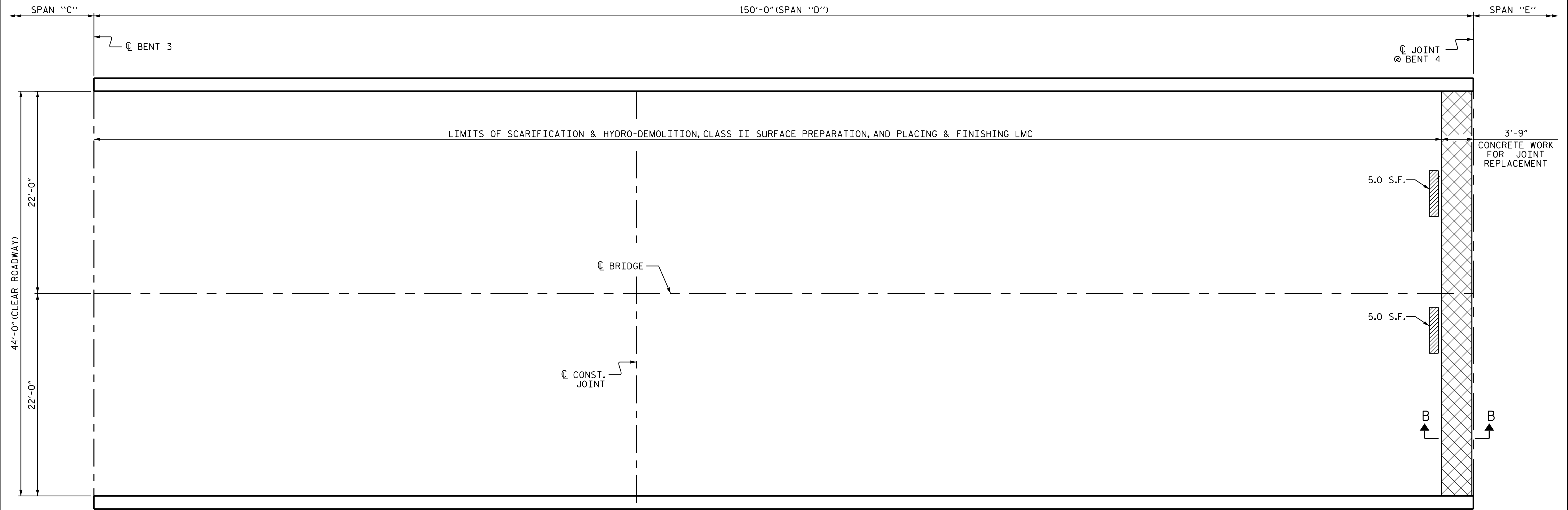
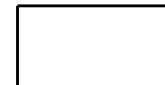




PAYMENT FOR CLASS II AND CLASS III SURFACE PREP. BASED UPON SQUARE FEET OF ADDITIONAL DEMOLITION REQUIRED FOLLOWING HYDRO-DEMOLITION OF BRIDGE DECK, SEE "OVERLAY SURFACE PREPARATION" SPECIAL PROVISION.

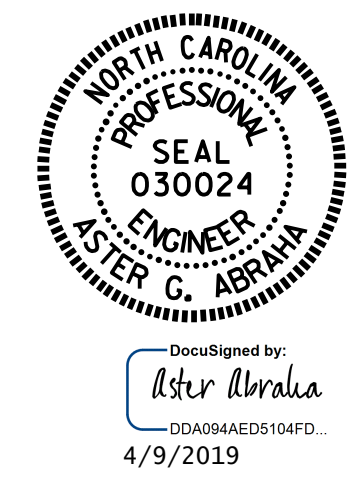
AT THE TIME OF PREPARATION OF THESE PLANS, IT WAS NOT ANTICIPATED THAT CLASS III SURFACE PREPARATION AND CONCRETE REPAIRS WOULD BE REQUIRED. HOWEVER, IT MAY BE DETERMINED IN THE FIELD THAT CLASS III SURFACE PREPARATION AND CONCRETE REPAIRS, OR OTHER WORK WILL BE NECESSARY TO PROPERLY COMPLETE THE INTENDED BRIDGE PRESERVATION/REHABILITATION WORK. THE CONTRACTOR SHALL BE PREPARED TO PERFORM SUCH WORK IN A TIMELY MANNER, AS DETERMINED IN THE FIELD. SUCH WORK SHALL BE CONSIDERED EXTRA WORK AND SHALL BE ADDRESSED AS PER ARTICLE 104-7 OF THE STANDARD SPECIFICATIONS. PROJECT SPECIAL PROVISIONS THAT OUTLINE REQUIREMENTS FOR THESE POTENTIAL ADDITIONAL WORK ITEMS HAVE BEEN PROVIDED IN PROJECT DOCUMENTS, BUT NO QUANTITIES HAVE BEEN LISTED. ACTUAL PAY ITEMS, QUANTITIES, AND COSTS WILL BE ESTABLISHED, AS REQUIRED, IF EXTRA WORK IS ENCOUNTERED.

SUMMARY OF QUANTITIES FOR SPAN "D"		
	ESTIMATE	ACTUAL
SCARIFYING BRIDGE DECK	718.7 SY	
HYDRO-DEMOLITION OF BRIDGE DECK	718.7 SY	
CLASS II SURFACE PREPARATION	1.1 SY	
CLASS III SURFACE PREPARATION	0.0 SY	
GROOVING BRIDGE DECK	6,131.2 SF	
LATEX MODIFIED CONCRETE OVERLAY	25.0 CY	
PLACING AND FINISHING LATEX MODIFIED CONCRETE OVERLAY	718.7 SY	
CONCRETE WORK FOR JOINT REPLACEMENT	165.0 SF	



-  - SCARIFYING BRIDGE DECK
-  - APPROX. AREA CLASS II SURFACE PREPARATION
-  - CONCRETE WORK FOR JOINT REPLACEMENT

PROJECT NO. 15BPR.17
 HALIFAX COUNTY
 BRIDGE NO. 410063



STATE OF NORTH CAROLINA
 DEPARTMENT OF TRANSPORTATION
 RALEIGH

**SURFACE PREPARATION
 SPAN "D"**

DRAWN BY : S. T. SANDOR DATE : 03/2018
 CHECKED BY : M. K. BEARD DATE : 04/2018

DOCUMENT NOT CONSIDERED FINAL UNLESS ALL SIGNATURES COMPLETED

REVISIONS						SHEET NO.	
NO.	BY:	DATE:	NO.	BY:	DATE:	TOTAL SHEETS	
1			3			S-7	21
2			4				