

PROJECT REFERENCE NO.	SHEET NO.
BR-0111	U0-2
THIS SHEET CORRESPONDS TO RDY-4	

### UTILITIES BY OTHERS

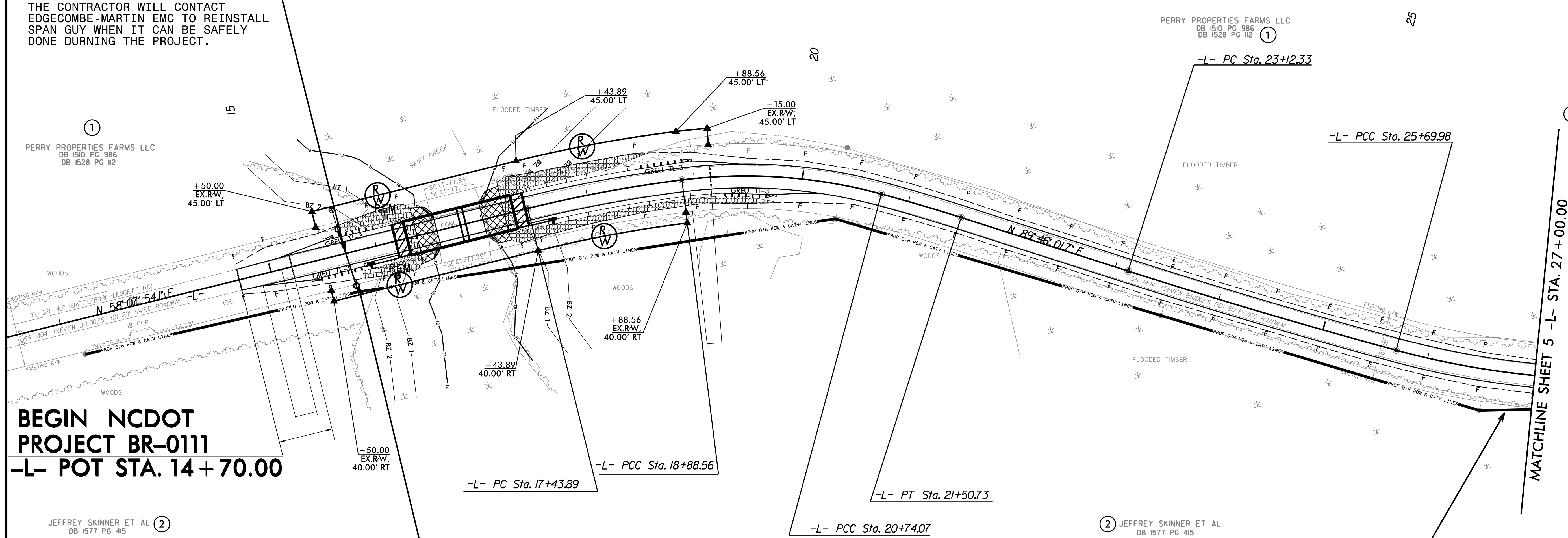
ALL PROPOSED UTILITY WORK SHOWN ON THIS SHEET WILL BE DONE BY OTHERS. NO PAYMENT WILL BE MADE TO THE CONTRACTOR FOR PROPOSED UTILITY WORK SHOWN ON THIS SHEET.

**WETHERILL ENGINEERING**  
 1223 Jones Franklin Rd.  
 Raleigh, N.C. 27606  
 License No. F-03777  
 Bus: 919 851 8077  
 Fax: 919 851 8107

TRANSPORTATION PLANNING/DESIGN - BRIDGE/STRUCTURE DESIGN  
 CIVIL/SITE DESIGN - GIS/GPS - CONSTRUCTION OBSERVATION

**O/H POWER - EDGECOMBE-MARTIN EMC**

THE CONTRACTOR WILL CONTACT EDGECOMBE-MARTIN EMC TO REINSTALL SPAN GUY WHEN IT CAN BE SAFELY DONE DURING THE PROJECT.



**BEGIN NCDOT PROJECT BR-0111**  
**-L- POT STA. 14+70.00**

O/H POWER-POLE REPLACEMENT  
 O/H POWER- (Edgecombe-Martin EMC)  
 O/H COMMUNICATION - (SUDDENLINK)

POWER COMPANY WILL PLACE POWER LINE FURTHER OUT.

O/H POWER-POLE REPLACEMENT  
 O/H POWER- (Edgecombe-Martin EMC)  
 O/H COMMUNICATION - (SUDDENLINK)

5/14/99  
2/4/2009 ut\_rdy4\_L02\_psh.dgn  
LISTED: 10/11/2009