



1223 Jones Franklin Rd.
Raleigh, N.C. 27606
License No. F-0377
Bus: 919 851 8077
Fax: 919 851 8107

PROJECT REFERENCE NO. **BR-0111** SHEET NO. **4**

RW SHEET NO.

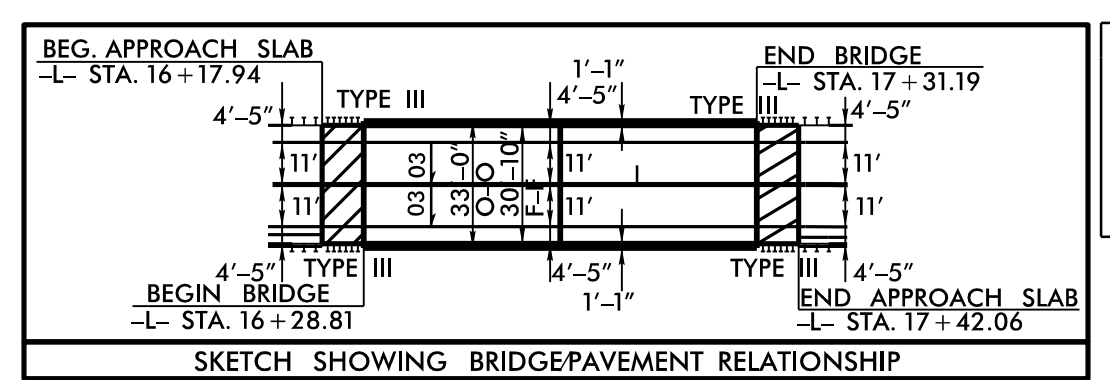
ROADWAY DESIGN ENGINEER 1/14/2020
HYDRAULICS ENGINEER 1/14/2020

PROFESSIONAL SEAL 022999
PROFESSIONAL SEAL 044561

CONSTRUCTION OBSERVATION

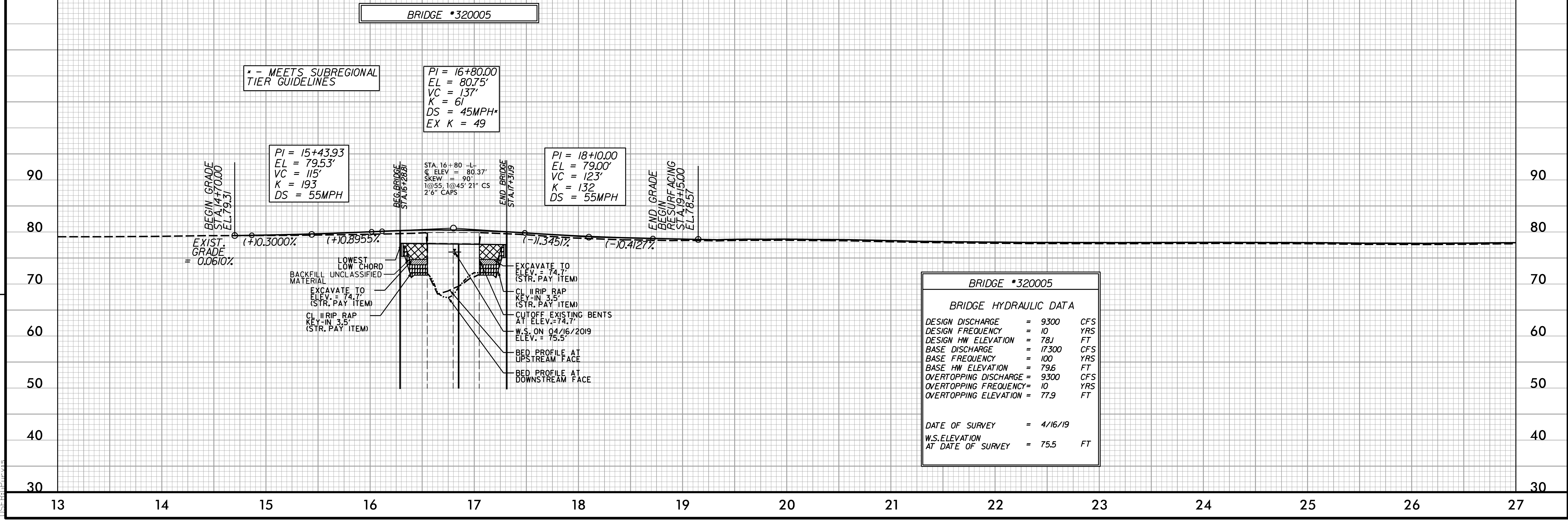
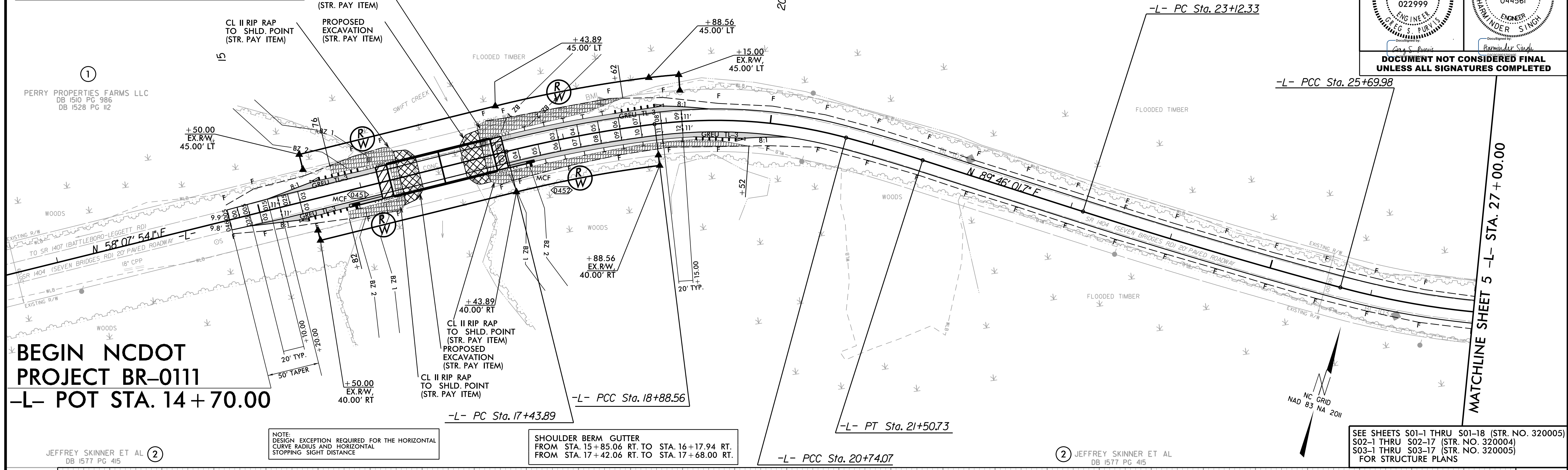
PERRY PROPERTIES FARMS LLC
DB 1510 PG 986
DB 1528 PG 112

DOCUMENT NOT CONSIDERED FINAL
UNLESS ALL SIGNATURES COMPLETED



ROCK PLATE SLOPES SEE RSD 275.01

FROM STA. 15+82 +/- RT. TO STA. 16+08 +/- RT.	PI Sta 18+16.31	PI Sta 19+82.50	PI Sta 21+12.40	PI Sta 24+41.8	PI Sta 26+84.33
FROM STA. 15+76 +/- LT. TO STA. 16+08 +/- LT.	$\Delta = 6' 47' 36.7''$ (RT)	$\Delta = 22' 14' 28.0''$ (RT)	$\Delta = 2' 36' 03.0''$ (RT)	$\Delta = 2' 36' 54.5''$ (LT)	$\Delta = 16' 38' 43.9''$ (LT)
FROM STA. 17+52 +/- RT. TO STA. 19+81 +/- RT.	$D = 4' 41' 44.3''$	$D = 11' 59' 22.7''$	$D = 3' 23' 33.3''$	$D = 1' 00' 53.9''$	$D = 7' 19' 48.1''$
FROM STA. 17+52 +/- LT. TO STA. 18+62 +/- LT.	$L = 144.68'$	$L = 185.50'$	$L = 76.66'$	$L = 257.65'$	$L = 227.09'$
FROM STA. 28+24 +/- RT. TO STA. 30+04 +/- RT.	$T = 72.42'$	$T = 93.93'$	$T = 38.34'$	$T = 128.85'$	$T = 114.35'$
	$R = 1,220.19'$	$R = 477.88'$	$R = 1,688.85'$	$R = 5,644.99'$	$R = 781.66'$
	$DS = 55$ MPH	$DS = 35$ MPH	$DS = 55$ MPH	$DS = 55$ MPH	$DS = 45$ MPH
	$SE = SEE$ PLANS	$SE = EXIST.$	$SE = EXIST.$	$SE = EXIST.$	$SE = EXIST.$



REVISIONS

1/7/2020
11:58:00 AM
C:\p0111_rdu_psh_4.dgn