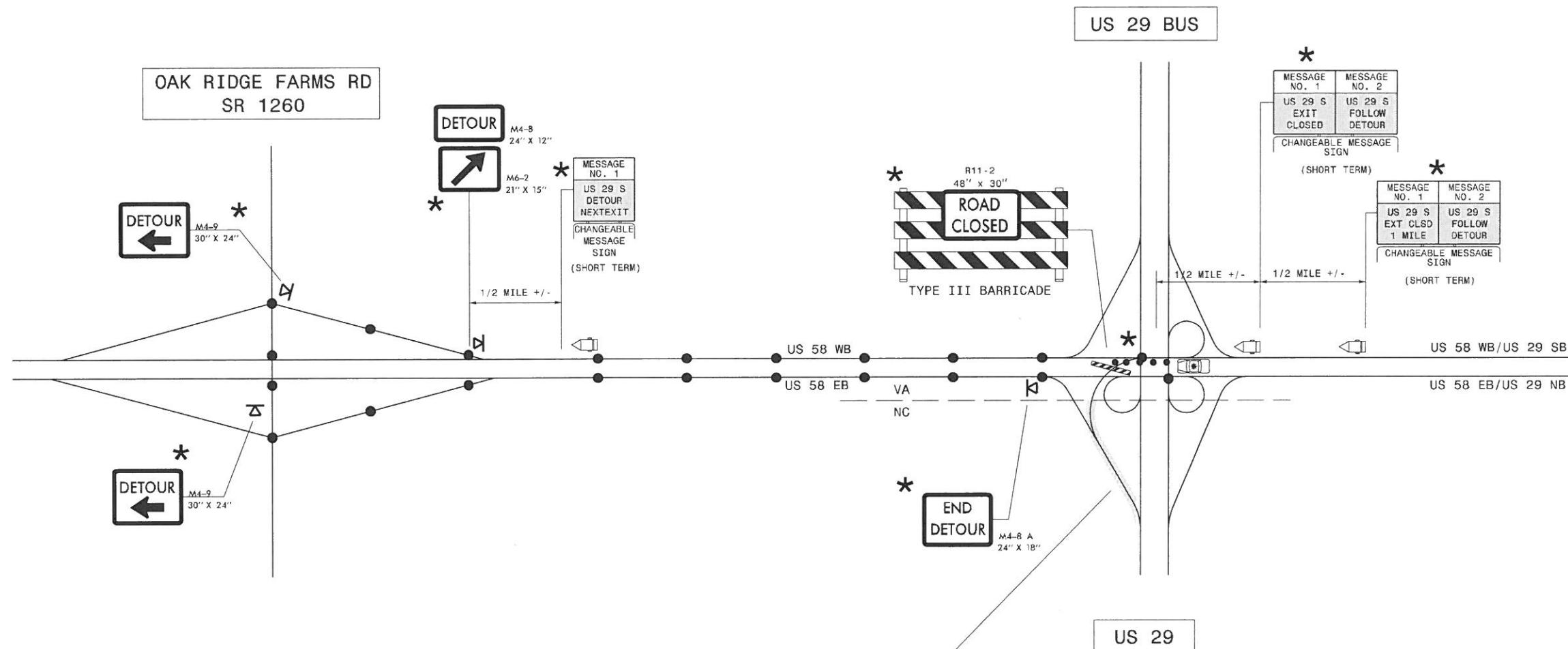


\* TO BE COORDINATED WITH VDOT



TO BE COORDINATED WITH DETOUR D AS PER THE ENGINEER.  
 WITH TRAFFIC IN A SINGLE LANE COMING FROM US 58, USE RSD 1101.02,  
 SHEET 5 & 6 OF 14 TO CONSTRUCT REMAINING PORTION OF RAMP

USE IN CONJUNCTION WITH RSD 1101.02, SHEET 3 OR 4.



LAW ENFORCEMENT



DETOUR ROUTE

**GENERAL NOTES**

1. THIS DRAWING IS INTENDED FOR USE DURING SHORT TERM CLOSURE OF US 58 WB/US 29 SB RAMP TO US 29 SB.
2. RAMP CLOSURE SHALL BE APPROVED BY THE ENGINEER.
3. IF RAMP CLOSURE RESTRICTIONS APPLY, SEE SPECIAL PROVISION, "INTERMEDIATE CONTRACT TIMES AND LIQUIDATED DAMAGES".