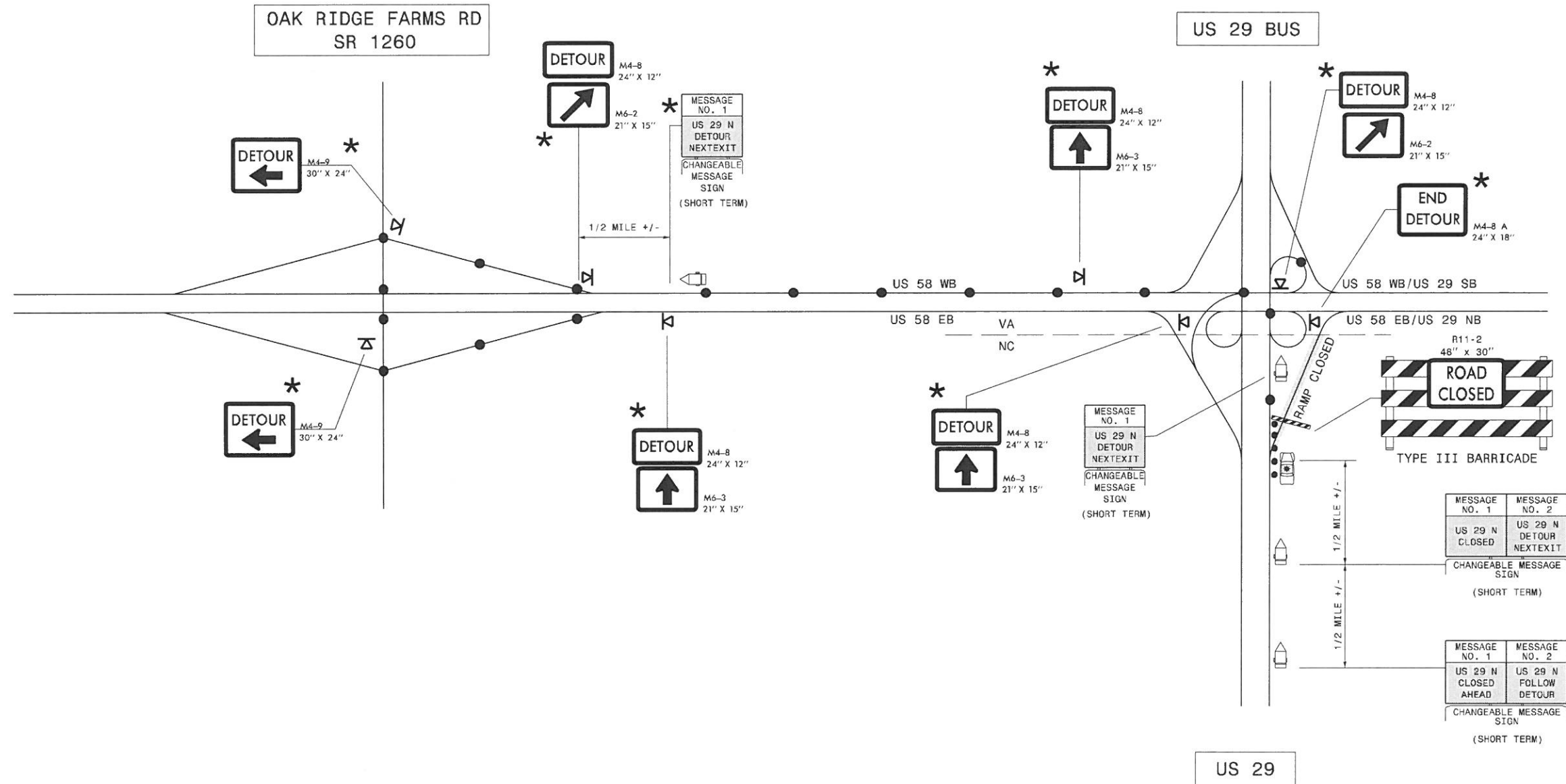


\* TO BE COORDINATED WITH VDOT



USE IN CONJUNCTION WITH RSD 1101.02, SHEET B.

LAW ENFORCEMENT

DETOUR ROUTE

**GENERAL NOTES**

1. THIS DRAWING IS INTENDED FOR USE DURING SHORT TERM CLOSURE OF US 29 NB RAMP TO US 58 EB/US 29 NB.
2. RAMP CLOSURE SHALL BE APPROVED BY THE ENGINEER.
3. IF RAMP CLOSURE RESTRICTIONS APPLY, SEE SPECIAL PROVISION, "INTERMEDIATE CONTRACT TIMES AND LIQUIDATED DAMAGES".