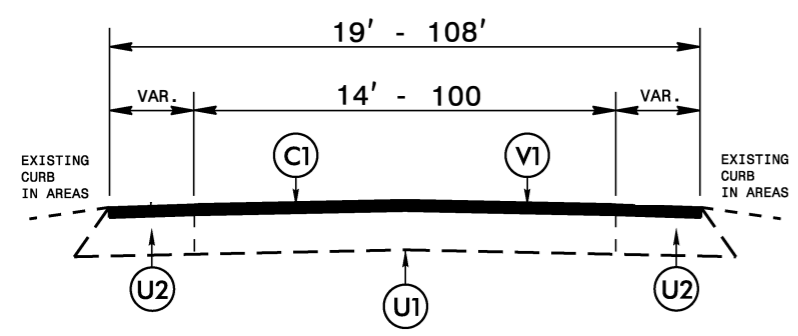
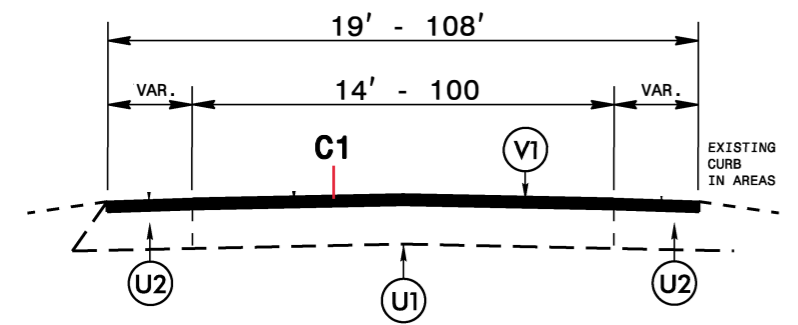


26-AUG-2020 14:08
 \\dot\dfs\sr\04\Groups-Div\7CC\DDC\10-RESURFACING PROJECTS\2020 CR Resurfacing\2020CPT-07-08.10171 (US 29)\To Raleigh\2021CPT-07-08.10171 typic
 b\cauth\AL DIV07-3013131

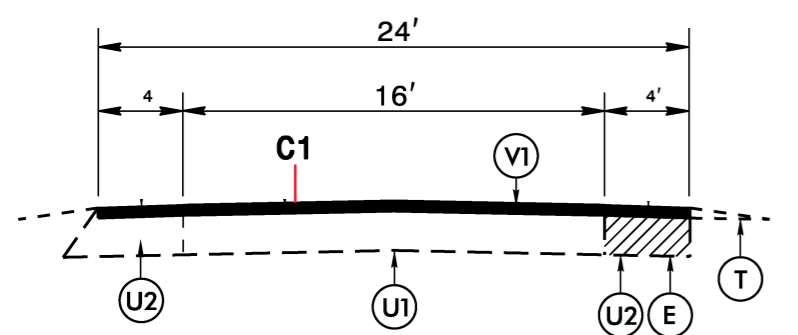
STATE	PROJECT NO.	SHEET NO.
N.C.	2021CPT.07.08.10171	4



TYPICAL SECTION NO. 3
 TO BE USED ON MAPS: 1, 6, 7, 8
 MAP 1: STA. 311+47 TO STA. 328+28
 MAP 7: STA. 10+00 TO STA. 23+11

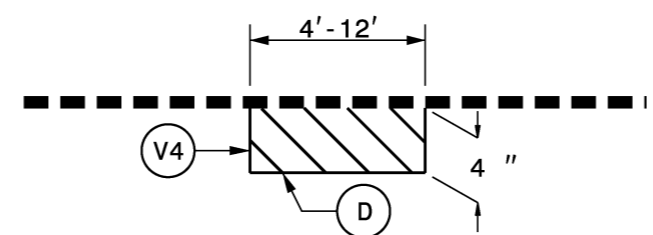


TYPICAL SECTION NO. 4
 TO BE USED ON MAPS: 2-5, 9-14
 MAP 4: STA. 10+00 TO STA. 15+25
 STA. 19+75 TO STA. 20+54

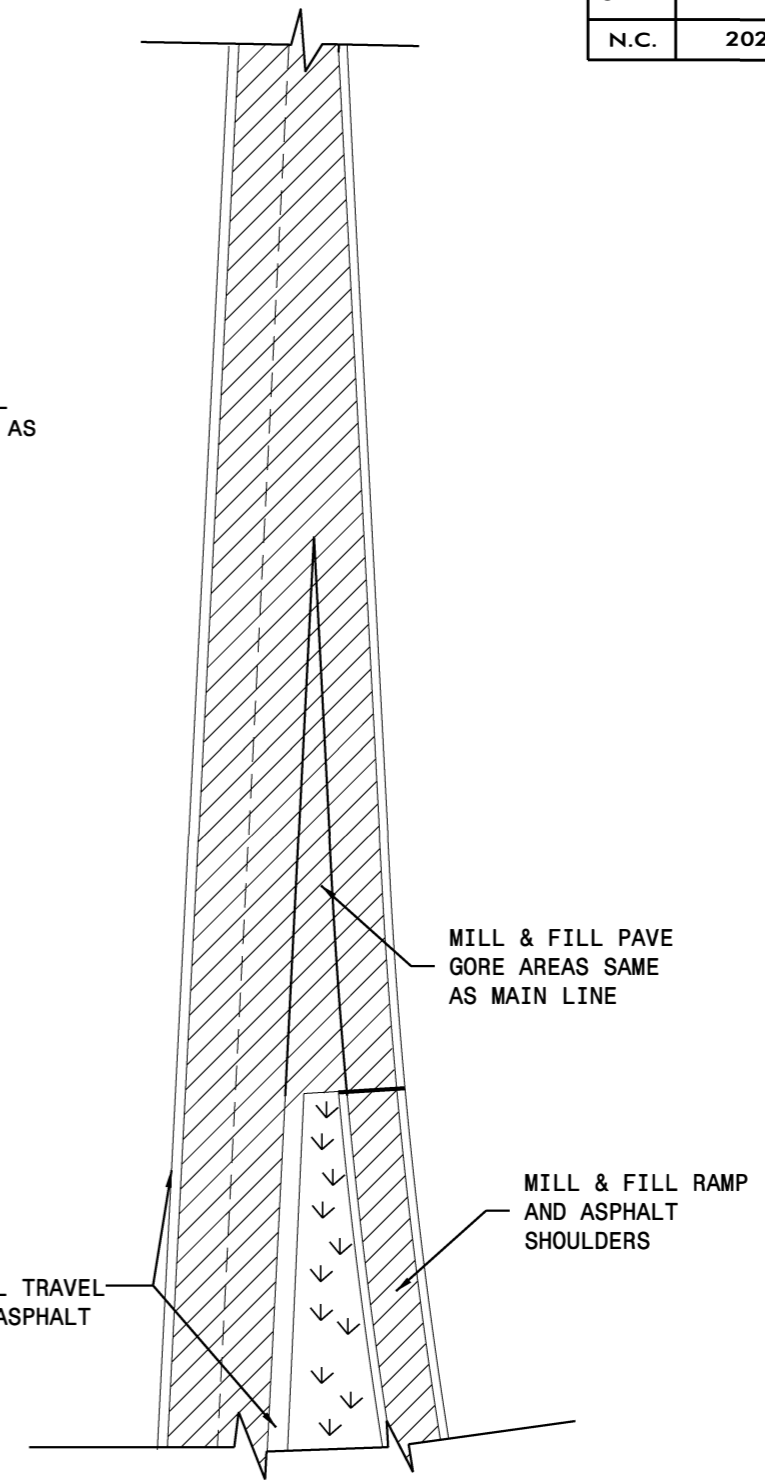


TYPICAL SECTION NO. 5
 TO BE USED ON MAP 4
 STA. 15+25 TO STA. 19+75

PATCHING EXISTING PAVEMENT DETAIL 1



MILL EXISTING ASPHALT PAVEMENT 4" IN DEPTH AND FILL WITH INTERMEDIATE COURSE, TYPE I19.0C AT LOCATIONS AS DIRECTED BY THE ENGINEER.



DETAIL - GORE AREAS

PAVEMENT SCHEDULE				
C1	PROP. APPROX. 1 1/2" ASPHALT CONCRETE SURFACE COURSE, TYPE S9.5C AT AN AVERAGE RATE OF 168 LBS PER SQ. YD.	T	SHOULDER RECONSTRUCTION	U1 EXISTING TRAVELWAY
		U2	EXISTING PAVED SHOULDER.	V1 MILLING ASPHALT PAVEMENT 1 1/2" DEPTH
C3	PROP. APPROX. 5/8" OPEN GRADED FRICTION COURSE, AT AN AVERAGE RATE OF 70 LBS PER SQ. YD.	V2	MILLING ASPHALT PAVEMENT 2 1/8" DEPTH	V3 MILLED RUMBLE STRIP
D	PROP. APPROX. 4" ASPHALT CONCRETE INTERMEDIATE COURSE, AT AN AVERAGE RATE OF 456 LBS PER SQ. YD.	V4	MILLING ASPHALT PAVEMENT 4" DEPTH	
E	PROP. APPROX. 8" ASPHALT CONCRETE BASE COURSE, TYPE B25.0C AT AN AVERAGE RATE OF 456 LBS PER SQ. YD. IN EACH OF TWO LIFTS			