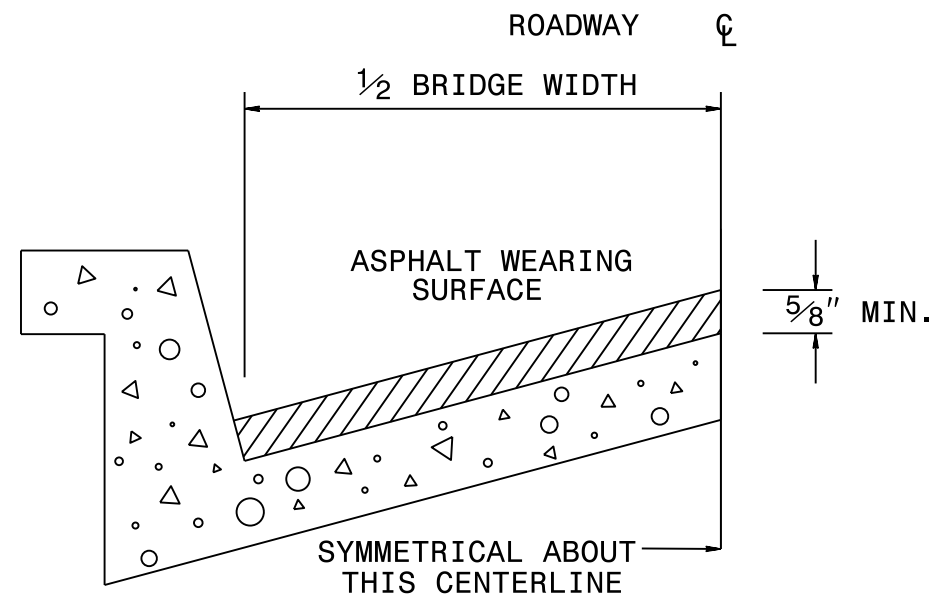


**TYPICAL SECTION NO. 4**

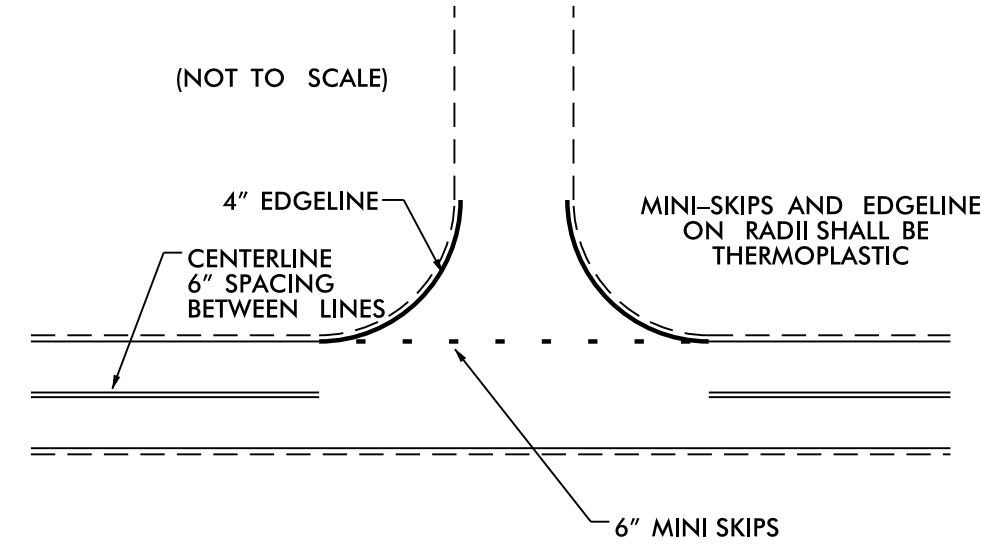
MAPS 2, 6, 8, 11, 12, 19, 20  
 MAP 15 - STA. 15+56 TO STA. 22+57  
 MAP 18 - STA. 13+59 TO STA. 17+36



**BRIDGE HALF TYPICAL SECTION**

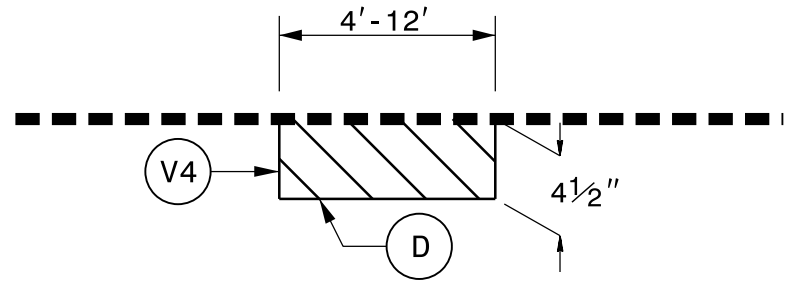
FOR BRIDGES WITH FLOOR DRAINS, CARE SHALL BE EXERCISED IN PLACING THE WEARING SURFACE AROUND FLOOR DRAINS SO AS NOT TO HINDER EFFECTIVE DRAINAGE. ALL DRAINS SHALL BE LEFT OPEN. THE PROPOSED WEARING SURFACE SHALL VARY IN THICKNESS AS NECESSARY TO PROVIDE A SMOOTH RIDING SURFACE. A THICKNESS OF NOT LESS THAN 5/8" SHALL BE PROVIDED. THE MAXIMUM THICKNESS SHALL PREFERABLY BE 1-1/2" UNLESS IT IS IMPRACTICAL TO PROVIDE A SMOOTH RIDING SURFACE OTHERWISE.

**STRIPING DETAIL  
 NON-SIGNALIZED/ NON-CURB & GUTTER INTERSECTIONS**



NOTE: MINI SKIPS SHALL BE PLACED ON A 10' CYCLE, CONTAINING AN 8' SPACE AND 2' SKIP. THE WIDTH OF THE SKIP SHALL BE 6".

**PATCHING DETAIL 1**



MILL EXISTING ASPHALT PAVEMENT 4 1/2" IN DEPTH AND FILL WITH INTERMEDIATE COURSE, TYPE I19.0C AT LOCATIONS AS DIRECTED BY THE ENGINEER.

PAVEMENT SCHEDULE			
C1	PROP. APPROX. 2" ASPHALT. CONCRETE SURFACE COURSE, TYPE S9.5D, AT AN AVERAGE RATE OF 224 LBS. PER SQ. YD.		
C2	PROP. APPROX. 3/4" OPEN- GRADED ASPHALT FRICTION COURSE, TYPE FC-1 MODIFIED, AT AN AVERAGE RATE OF 90 LBS. PER SQ. YD.		
C3	PROP. APPROX. 1 1/2" ASPHALT CONCRETE SURFACE COURSE, TYPE S9.5C, AT AN AVERAGE RATE OF 168 LBS. PER SQ. YD.		
D	PROP. APPROX. 4 1/2" ASPHALT CONCRETE INTERMEDIATE COURSE, TYPE I19.0C, AT AN AVERAGE RATE OF 513 LBS. PER SQ. YD.		
F	PROPOSED FOG SEAL TO BE APPLIED TO THE EXISTING SHOULDER		
R1	EXISTING CONCRETE MEDIAN BARRIER WALL	R2	EXISTING CONCRETE 2'-6" CURB & GUTTER
R3	EXISTING CONCRETE ISLAND	U	EXISTING CONCRETE PAVEMENT WITH ASPHALT OVERLAY
V1	MILLING ASPHALT PAVEMENT 2 5/8" DEPTH	V2	MILLING ASPHALT PAVEMENT 1 1/2" DEPTH
V3	FINE MILLING 5/8" DEPTH	V4	MILLING ASPHALT PAVEMENT 4 1/2" DEPTH
V5	MILLED RUMBLE STRIPS		

REVISIONS

I4-MAY-2018 08:49  
 S:\DDC\Resurfacing Projects\2020\_PO\_Centracofa\Guliford\2020CPT.07.11.10411\US\_29\CADD\typical.s.dgn  
 11/11/2020 11:07:30 AM